

## MERMAID OF ALSSUND — SUNSEEKER



**Builder:** SUNSEEKER

**Year Built:** 2006

**Model:** Motor Yacht

**Price:** PRICE ON APPLICATION

**Location:** France

**LOA:** 75' 10" (23.09m)

**Beam:** 18' 7" (5.64m)

**Min Draft:** 5' 7" (1.68m)

**Max Draft:** 5' 7" (1.68m)

**Max Speed:** 32 Kts. (37 MPH)

Our experienced yacht broker, Andrey Shestakov, will help you choose and buy a yacht that best suits your needs **MERMAID OF ALSSUND — SUNSEEKER** from our catalogue. Presently, at Shestakov Yacht Sales Inc., we have a wide variety of yachts available on our sale's list. We also work in close contact with all the big yacht manufacturers from all over the world.

If you would like to buy a yacht **MERMAID OF ALSSUND — SUNSEEKER** or would like help answering any questions concerning purchasing, selling or chartering a yacht, please call **+1(954)274-4435**

---

# TABLE OF CONTENTS

---

TABLE OF CONTENTS	2
SPECIFICATIONS	3
Overview	3
Basic Information	3
Dimensions	3
Speed, Capacities and Weight	3
Accommodations	3
Hull and Deck Information	4
Engine Information	4
DETAILED INFORMATION	5
Accommodation	5
Additional	5
Vessel Description	6
Exclusions	6
Disclaimer	6
PHOTOS	7
CONTACTS	13
Contact details	13
Telephones	13
Office hours	13
Address	13

---

# SPECIFICATIONS

---

## Overview

---

This Sunseeker 75 Yacht is one of best presented examples available on the market, maintained meticulously by a careful owner. Built in 2006, "MERMAID OF ALSSUND" is equipped with twin MAN 1550 engines, reaching speeds of 32 knots and cruising comfortably in the 20s. This 75 Yacht accommodates up to 8 guests in 4 well-appointed ensuite cabins, with 2 crew.

"MERMAID" boasts an exceptional specification, including KVH G8 Satellite TV, Bose speakers, watermaker, bow & stern thrusters, ASEA shore power converter and more. Furthermore, she features a number of customisations including an additional double berth arrangement in lieu of the standard twin, enlarged hull windows and a special flybridge bar layout. The ideal boat for families and friends, the 75 Yacht's inviting flybridge and cockpit areas are perfect for entertaining and relaxing in the sunshine. "MERMAID OF ALSSUND" must be seen to be appreciated, to arrange a viewing or for more information, please contact us.

## Basic Information

---

**Category:** Motor Yacht

**Model Year:** 2006

**Year Built:** 2006

**Country:** France

## Dimensions

---

**LOA:** 75' 10" (23.09m)

**Beam:** 18' 7" (5.64m)

**Min Draft:** 5' 7" (1.68m)

**Max Draft:** 5' 7" (1.68m)

## Speed, Capacities and Weight

---

**Max Speed:** 32 Kts. (37 MPH)

**Displacement:** 94137.385874 Pounds

**Water Capacity:** 290.5892572 Gallons

**Fuel Capacity:** 1452.946286 Gallons

## Accommodations

---

**Total Berths:** 8

**Crew Berths:** 2

---

## Hull and Deck Information

---

**Hull Material:** GRP

**Hull Color:** White with black boot top line

---

## Engine Information

---

**Engines:** 2

**Manufacturer:** MAN

**Model:** 1550

**Fuel Type:** Diesel

# DETAILED INFORMATION

## Accommodation

The 75 Yacht accommodates 8 guests in 4 ensuite cabins, plus 2 crew. Featuring a forward VIP Cabin, Aft Master Cabin, Starboard Double Cabin (in lieu of Twin) and a Port Twin Cabin both to Midships. Finished in Walnut Satin with neutral leather upholstery, "MERMAID" offers a timeless and exceedingly well cared for interior.

## Additional

Additional AC 220v double socket Additional pair 12" Mooring Cleats fitted to the aft edge of the hull band below the hull/deck joint facing aft ASEA AC25-1 shore power converter 400VAC to 230VAC Bedside reading lights for Master Stateroom only to be 82 Yacht style with glass shade (satin chrome finish) Bimini Top in Navy Blue canvas with Stainless steel frame work Bose Lifestyle 38 DVD/CD Surround System in lieu of Sony Surround System Burglar Alarm - Remote controlled microwave alarm system (DSM 200E) CCTV dome camera facing aft interfaced to Raymarine E Series Chocks on platform for Tender - Avon Seasport 400 DL Jet (V80236) Colombo 'Mixa' cabin door handles (polished chrome with satin chrome handle) in lieu of std Dimmers on overhead lighting Dinghy Inflator & socket 12 volt located in stern locker Dockpower, dual shore cord combiner from Energy Solutions Dual PTO - simultaneous use of bow and stern thrusterEngines and generator has been serviced by MAN on 30.4.2015 Flybridge Cockpit Teak Decking Flybridge griddle upgraded to Gagganeau VR421 in lieu of std Forward Flybridge sunpad to be split into three sections, lengthways Galaxy black granite upstand at back of Galley worktop (200mm high) Fridge: Bosch Logix KTR 18424 Freezer: Bosch Logix GSL 14424 KVH G8 Satellite TV system with one customer supply Sky Digibox decoder in Saloon fed to all TV's (including crew) Larger spoke type steering wheel for lower helm position Lec DF50G drinks cooler to be located behind walnut door in unit below Saloon TV Maretron NMEA2000 Vessel monitoring, engines, water, fuel, and grey water tanks, weather station, Raymarine interface Marquipt side boarding ladder Mini directional spotlights (satin chrome finish) to be inset in Lower Saloon ceiling feature onlyNew antifouling and polished underwater gear on 20.4.2015 One CCTV camera (fixed camera in mini dome) centered aft on Flybridge overhang for stern docking, connected to Raymarine displays at both helm positions Pleated blind required for skylight Raymarine AIS-B Raymarine Autopilot system ST8001+ dual station in lieu of standard Raymarine E120 -12.1" additional Colour display on lower console Raymarine E120 -12.1" Colour Radar Chartplotter on lower console with E120 -12.1" Colour repeater on fly console & Raystar 125 GPS Diff receiver with 4kw 48" open scanner in lieu of std Raymarine Ray 240E Class D-DSC - VHF Dual station in lieu of standard Raymarine ST60 Speed and Depth system in lieu of Simrad IS15 Saloon Bose 38 connected to two Bose 131 marine speakers in Aft Cockpit (second zone) and four Bose 131 marine speakers on Flybridge (third zone) in lieu of std Sanshin Twin Beam remote controlled Searchlight HR-1012 dual station control in lieu of std Sharp 15" Aquos LCD TV and Sony DVX-11A DVD/CD/MP3 for the crew cabin Sharp Aquos 20" LCD TV Sony 32" LCD in the Aft Master Cabin Sony DVP-F35P compact DVD/CD/MP3

player linked to cabin TV Special Flybridge layout incorporating 94 Yacht wet bar in lieu of standard bar with 3 stools (Stool upholstery Navy Blue Sunbrella) fitted on the port side with the standard seating group fitted aft Storage cage fitted above engine Teak flybridge table top fitted on a White GRP leg in lieu of std Towel heaters in all heads TV Shore cable inlet connection socket fitted at stern Underwater lights x 5 (3 across stern, one aft on each side) - 75 watt, 24 volt Halogen bulb, Aluminium Bronze Casing in the Crew Cabin Upgraded size horizontal portholes (94 Style) in lieu of std Watermaker - SeaRecovery Aqua Matic 1800-2 with NMEA remote control panel at helm

---

## Vessel Description

---

This Sunseeker 75 Yacht is one of best presented examples available on the market, maintained meticulously by a careful owner. Built in 2006, "MERMAID OF ALSSUND" is equipped with twin MAN 1550 engines, reaching speeds of 32 knots and cruising comfortably in the 20s. This 75 Yacht accommodates up to 8 guests in 4 well-appointed ensuite cabins, with 2 crew.

"MERMAID" boasts an exceptional specification, including KVH G8 Satellite TV, Bose speakers, watermaker, bow & stern thrusters, ASEA shore power converter and more. Furthermore, she features a number of customisations including an additional double berth arrangement in lieu of the standard twin, enlarged hull windows and a special flybridge bar layout. The ideal boat for families and friends, the 75 Yacht's inviting flybridge and cockpit areas are perfect for entertaining and relaxing in the sunshine. "MERMAID OF ALSSUND" must be seen to be appreciated, to arrange a viewing or for more information, please contact us.

---

## Exclusions

---

Owner's personal belongings.

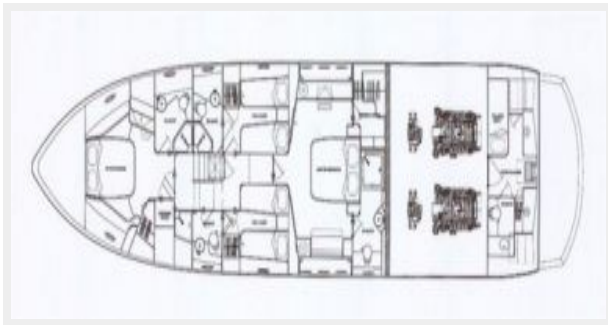
---

## Disclaimer

---

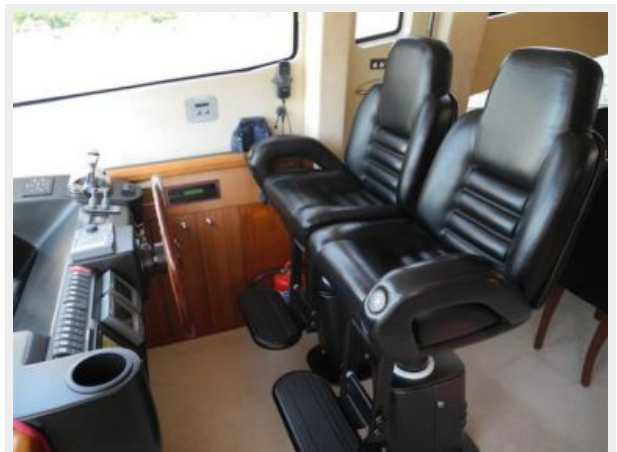
The Company offers the details of this vessel or yacht in good faith but cannot guarantee or warrant the accuracy of this information nor warrant the condition of the vessel. A buyer should instruct his representatives, agents, or his surveyors, to investigate such details as the buyer desires validated. This vessel or yacht is offered subject to prior sale, price change, or withdrawal without notice.

# PHOTOS



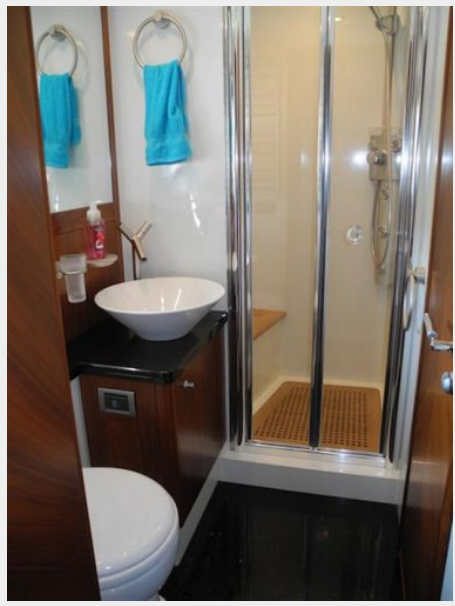












# CONTACTS

---

Andrey Shestakov, leading yacht broker of the sales department of Shestakov Yacht Sales Inc. Shestakov Yacht Sales Inc., the official representative of the Miami/Fort Lauderdale FL headquarters.

## Contact details

---

Email: [andrey@shestakovyachtsales.com](mailto:andrey@shestakovyachtsales.com)

Web: [shestakovyachtsales.com/en/](http://shestakovyachtsales.com/en/)

## Telephones

---

USA: +1(954)274-4435

## Office hours

---

Monday – Saturday: **9:00 - 21:00** EDT

Sunday: **closed**

## Address

---



Harbour Towne Marina, 850 NE 3rd St,  
STE 213, Dania, FL 33004