

SANDY — SUNSEEKER



Builder: SUNSEEKER

Year Built: 2014

Model: Motor Yacht

Price: PRICE ON APPLICATION

Location: France

LOA: 97' 10" (29.80m)

Beam: 22' 8" (6.89m)

Min Draft: 7' 7" (2.30m)

Max Draft: 7' 7" (2.30m)

Max Speed: 32 Kts. (37 MPH)

Our experienced yacht broker, Andrey Shestakov, will help you choose and buy a yacht that best suits your needs **SANDY — SUNSEEKER** from our catalogue. Presently, at Shestakov Yacht Sales Inc., we have a wide variety of yachts available on our sale's list. We also work in close contact with all the big yacht manufacturers from all over the world.

If you would like to buy a yacht **SANDY — SUNSEEKER** or would like help answering any questions concerning purchasing, selling or chartering a yacht, please call **+1(954)274-4435**

TABLE OF CONTENTS

TABLE OF CONTENTS	2
SPECIFICATIONS	3
Overview	3
Basic Information	3
Dimensions	3
Speed, Capacities and Weight	3
Accommodations	3
Hull and Deck Information	3
Engine Information	4
DETAILED INFORMATION	5
Accommodation	5
Additional	5
Vessel Description	6
Exclusions	6
Disclaimer	7
PHOTOS	8
CONTACTS	11
Contact details	11
Telephones	11
Office hours	11
Address	11

SPECIFICATIONS

Overview

Launched in June 2014 this stunning Sunseeker 101 Sport Yacht "SANDY" offers great accommodation with 4 cabins plus a 3 cabin crew for 4 (with 2 bathrooms) teamed up with high performance with twin 2640hp MTU 16V 2000 M94s on a smooth shaft drive system. With an impressive list of additional extras and no availability from the shipyard, the 101 Sport Yacht "SANDY" is an opportunity not to be missed. Part exchanges will be considered, please contact us for more information.

Basic Information

Category: Motor Yacht

Model Year: 2014

Year Built: 2014

Country: France

Dimensions

LOA: 97' 10" (29.80m)

Beam: 22' 8" (6.89m)

Min Draft: 7' 7" (2.30m)

Max Draft: 7' 7" (2.30m)

Speed, Capacities and Weight

Max Speed: 32 Kts. (37 MPH)

Displacement: 198416.0358 Pounds

Water Capacity: 528.344104 Gallons

Fuel Capacity: 3434.236676 Gallons

Accommodations

Total Berths: 8

Crew Berths: 4

Hull and Deck Information

Hull Material: GRP

Hull Color: White hull

Engine Information

Engines: 2

Manufacturer: MTU

Model: 16V 2000 M94

Fuel Type: Diesel

DETAILED INFORMATION

Accommodation

The very large aft Cockpit leads to a spacious Saloon and dining area with triple suspended Helm seats with the latest navigation system. Down and forward leads you to the full beam and mid ships Master Cabin with ensuite bathroom and walk-in wardrobe. Further forward 1 Twin Ensuite Guest Cabin, Twin Pullman Berth and fully forward leads to the VIP Guest Cabin with ensuite bathroom. Also on the lower accommodation area is a separate office area with TV and drop down table. Fully aft access to the well equipped Galley and 3 separate Crew Cabins, accommodating 4 crew members, and direct access to the engine room. Transom hydraulic garage to take a 5 metre tender. Forward deck seating and table adjacent to a sunbathing area and with removable parasol. Sport fly consisting of second helm position and aft bench seats with good space for sunbathing.

Additional

13,000 litre extended range fuel tanks 2 brick safe for Master Cabin and Captains Cabin 2 brick safe for the Captains Cabin 2 x portlights fitted into the Flybridge deck to add lots of natural light into the Saloon 2 x teak directors chairs with navy blue upholstery and a white diagonal cross on the backrests 2nd VHF fitted to top main Helm – Sailor 6222 – both VHF's aerials on the hoop are to be mounted on either side of the hoop so they do not receive interference 4th bunk in Crew Cabin 8 seater dining table A small monitor fitted in the 3 x Crew Cabins and linked to the DVD Player AC 220v socket x 7 for specific exterior area's Air conditioning - AHDC air handlers throughout the vessel for quieter running units Air conditioning - system upgraded to tropical Air horn upgrade to triple Kahlenburg All Saloon and deck head windows have medium tinting All Saloon sofa and tables to have pins and sockets to stop them moving All three Helm seats include suspension An additional bilge pump rule 3700 GPH added to the engine room for emergency use only. There is a manual switch fitted on the dashboard for the additional pump Anchor chain for the port and starboard anchors are both 100 Metre's long to save weight Blue Vision for the MTU controls Both anchor chains are colour coded for the length Bronze package Vimar control system for the lighting Carbon fibre ensign staff CCTV with 3 camera's 2 x infra red located in the engine room and 1 x camera located on the Fly overhang for stern docking Cockpit has retractable sun awning Cockpit includes full size wetbar including BBQ grill, fridge, ice maker and sink Commercial fridge freezers for the Galley Compass swing with correction card Coppercoat antifoul for the hull with longer life expectancy (no significant weight increase on vessel over other types of antifouling) Cover pack for all exterior seating in silver stamoid Crew mess table top with lift up extended table top Dumb waiter fitted in Saloon bar unit down to the Galley Electrically operated blinds in Saloon and dining area Engine third station in Cockpit Extended MTU warranty cover Fit Commercial specification Miele separate washing machine and tumble dryer and dishwasher FM Aerial on the hoop and linked to the interior audio system Fuel polishing system – Separ Xasp pure fuel system W-PFS-026-W-230V NEC Generators – 2 x 50KW Onan in soundshields Handrails both sides of stairs fitted in lower accommodation

with leather wrap Heated towel rail (on automatic timer) fitted in all guest ensuites Idromar Water maker 230 ltr per hour Interior wood is Satin Walnut KVH M9 Satellite TV system with gear VIACCESS KVH V7 Mini V-Sat system Lightning conductor fitted to the radar chair and an earthing plate fitted to the hull Martek DCF – E120 Lifeline auto fully automatic defibrillator in the crew mess MCA Category 2 MGN 280 Mini Bar fitted in the Master Cabin MTU engines have Chrome Pack Oil change system for the engines and generators Parasol with off set posts for the foredeck Port Guest Cabin have twin beds not sliding Portable air compressor unit with power outlets in Garage, Foredeck and Engine Room RAYMARINE MU 602 CLW cooled thermal imaging camera required to the highest specification Saloon bar including fridge, wine cooler and sink Separate row of red LED lights fitted above Helm for night running SES Linn based & ORCA AV Equipment Shore converter 60 KVA SIMRAD navigational package includes: 3 x NSO Processor, 3 x Hatteland 19" LCD Monitor, 6Kw 4' Radar Scanner, 2 x OP40 Keypad Controllers, 1 x GS15 GPS Antenna. Autopilot: IS40, Configured as Autopilot display, OP10 Autopilot Keypad, AC12 Autopilot Computer, RC42 Rate Compass, RF25 Rudder Feedback Unit. Instruments: 2 x IS40 Colour Multifunction instrument. B744V Speed/Depth/Water Temperature transducer. VHF Radio: RS87 VHF Radio Handset, Loudspeaker. Echo Sounder: BSM-1 Black box Sounder Module. AIS: N-AIS400 with dedicated VHF and GPS aerials. Wireless Interface: GoFree – Wireless switch allows repeat and control of navigation system via iPad. Simrad NSS12 chartplotter multifunction touch screen colour display linked into the main network in the Crew Mess Sleipner fin stabilisers system to give reduced roll whilst under way and on anchor Sportsfly area has full beam bench seating with waterproof upholstered cushion and capability to reverse the back rest so guests can view aft as well as forward plus teak table forward Sprung mattress for all Cabins Stainless steel and teak bathing ladder Stern docking flood lights Stern spring cleats Trailing for engines, providing ability to run on one engine if necessary Underwater lights across transom and hull side aft - Aqualuma series 6 white LED. 4 x across the transom, 2 x port side of hull and 2 x starboard side of hull Voyager VX 330 Xenon 300w 230 volt spot-light Water softener for domestic water Waterproof socket in the garage Work bench and vice in engine room

Vessel Description

Launched in June 2014 this stunning Sunseeker 101 Sport Yacht "SANDY" offers great accommodation with 4 cabins plus a 3 cabin crew for 4 (with 2 bathrooms) teamed up with high performance with twin 2640hp MTU 16V 2000 M94s on a smooth shaft drive system. With an impressive list of additional extras and no availability from the shipyard, the 101 Sport Yacht "SANDY" is an opportunity not to be missed. Part exchanges will be considered, please contact us for more information.

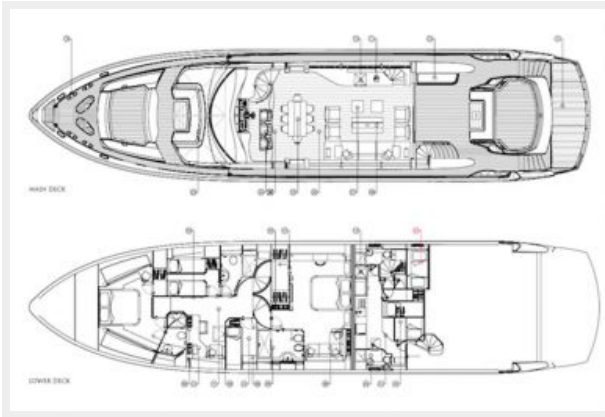
Exclusions

Owner's personal belongings.

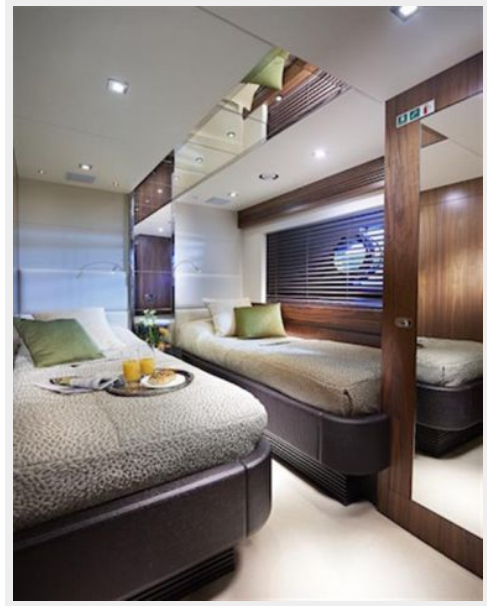
Disclaimer

The Company offers the details of this vessel or yacht in good faith but cannot guarantee or warrant the accuracy of this information nor warrant the condition of the vessel. A buyer should instruct his representatives, agents, or his surveyors, to investigate such details as the buyer desires validated. This vessel or yacht is offered subject to prior sale, price change, or withdrawal without notice.

PHOTOS







CONTACTS

Andrey Shestakov, leading yacht broker of the sales department of Shestakov Yacht Sales Inc. Shestakov Yacht Sales Inc., the official representative of the Miami/Fort Lauderdale FL headquarters.

Contact details

Email: andrey@shestakovyachtsales.com

Web: shestakovyachtsales.com/en/

Telephones

USA: +1(954)274-4435

Office hours

Monday – Saturday: **9:00 - 21:00** EDT

Sunday: **closed**

Address



Harbour Towne Marina, 850 NE 3rd St,
STE 213, Dania, FL 33004