

DRIFTWAY — SUNSEEKER



Builder: [SUNSEEKER](#)

Year Built: 2014

Model: Motor Yacht

Price: PRICE ON APPLICATION

Location: United Kingdom

LOA: 42' 8" (12.98m)

Beam: 12' 2" (3.69m)

Min Draft: 3' 7" (1.07m)

Max Draft: 3' 7" (1.07m)

Max Speed: 34 Kts. (39 MPH)

Our experienced yacht broker, Andrey Shestakov, will help you choose and buy a yacht that best suits your needs **DRIFTWAY — SUNSEEKER** from our catalogue. Presently, at Shestakov Yacht Sales Inc., we have a wide variety of yachts available on our sale's list. We also work in close contact with all the big yacht manufacturers from all over the world.

If you would like to buy a yacht **DRIFTWAY — SUNSEEKER** or would like help answering any questions concerning purchasing, selling or chartering a yacht, please call **+1(954)274-4435**

TABLE OF CONTENTS

| | |
|------------------------------|----|
| TABLE OF CONTENTS | 2 |
| SPECIFICATIONS | 3 |
| Overview | 3 |
| Basic Information | 3 |
| Dimensions | 3 |
| Speed, Capacities and Weight | 3 |
| Accommodations | 3 |
| Hull and Deck Information | 4 |
| Engine Information | 4 |
| DETAILED INFORMATION | 5 |
| Accommodation | 5 |
| Additional | 5 |
| Vessel Description | 5 |
| Exclusions | 6 |
| Disclaimer | 6 |
| PHOTOS | 7 |
| CONTACTS | 11 |
| Contact details | 11 |
| Telephones | 11 |
| Office hours | 11 |
| Address | 11 |

SPECIFICATIONS

Overview

"DRIFTWAY" was sold new to her existing owner in 2014, making the opportunity to purchase this lightly used Portofino 40 quite unique. Wintered ashore in Poole at our own shipyard, the vessel benefits from only 180 hours use. "DRIFTWAY" has been serviced in Feb 2015 and antifouled in May 2015. The aft Twin Cabin can be converted to a double, combined with the convertible Saloon and a forward double Cabin, 6 berths are offered in total. The vessel benefits from the extended fixed platform, bow thruster and generator. "DRIFTWAY" is a serious opportunity to purchase a Portofino 40 & should not to be missed. Please contact us for more information.

Basic Information

Category: Motor Yacht

Model Year: 2014

Year Built: 2014

Country: United Kingdom

Vessel Top: Hardtop

Dimensions

LOA: 42' 8" (12.98m)

Beam: 12' 2" (3.69m)

Min Draft: 3' 7" (1.07m)

Max Draft: 3' 7" (1.07m)

Speed, Capacities and Weight

Max Speed: 34 Kts. (39 MPH)

Displacement: 23148.53751 Pounds

Water Capacity: 77.93075534 Gallons

Fuel Capacity: 198.129039 Gallons

Accommodations

Total Berths: 6

Hull and Deck Information

Hull Material: GRP

Hull Color: White hull with black boot top line

Engine Information

Engines: 2

Manufacturer: Volvo

Model: D6

Fuel Type: Diesel

DETAILED INFORMATION

Accommodation

"DRIFTWAY" features accommodation for 6 guests in her 3 Cabin layout. Comprising of a large double or twin berth in the aft Cabin, the U-shaped dinette converts into a double berth as and when required. The forward Cabin has a large island berth which also has access to the WC and shower. The Galley is situated on the starboard side of the boat and the Cockpit boasts a spacious seating area with a teak table for alfresco dining. She also has an extended platform.

Additional

220V 32 Amp shorepower cable with socket 40 metres of 8mm Galvanised Anchor chain Aft Cockpit tonneau cover Bow sunbathing cushions with folding back rests in navigator and Bow thruster - Sleipner side-power SE80/185S-12V 4.4kW-6hp Carbon fibre effect console panels Ceramic electric griddle in the Cockpit Console instrument cover Contemporary signature interior scheme (Wenge/Anegre) with contrasting wooden flooring in Saloon Extended GRP platform fixed version Fusion 700 Series CD/DVD/Radio with Fusion iPod docking station with video output Fusion remote control in Cockpit Galley refrigerator, electric hob and microwave Hard top installation with electrically operated opening roof Holding tank system - 95 litres Lewmar 16Kg delta anchor - Galvanised Lewmar anchor winch V2GD-24v Onan Generator 6 kw 50Hz (6MDKBJ) Pair of exterior 6" Fusion marine Speakers in Cockpit Pair of interior 5" Fusion marine speakers in Saloon Saloon dining table fitted on a telescopic leg to convert into an occasional berth with in-fill cushion and additional supports Samsung 32" LED television in Saloon Simrad 3G broadband radar Simrad autopilot system with SG05 pilot computer and Volvo EVD gateway IS40 display and OP10 control Simrad NSS12 colour 12.1" Multifunction touch screen chart plotter display with Simrad GS15 GPS Simrad IS40 colour speed and separate depth instruments with DST800 depth/speed/temperature transducer Simrad RS82 VHF radio with DSC function Teak decking in the Cockpit Toilet Sealand MasterFlush UHF TV/FM antenna Volvo Penta twin 2.5" LCD engine displays

Vessel Description

"DRIFTWAY" was sold new to her existing owner in 2014, making the opportunity to purchase this lightly used Portofino 40 quite unique. Wintered ashore in Poole at our own shipyard, the vessel benefits from only 180 hours use. "DRIFTWAY" has been serviced in Feb 2015 and antifouled in May 2015. The aft Twin Cabin can be converted to a double, combined with the convertible Saloon and a forward double Cabin, 6 berths are offered in total. The vessel benefits from the extended fixed platform, bow thruster and generator. "DRIFTWAY" is a serious opportunity to purchase a Portofino 40 & should not to be missed. Please contact us for more information.

Exclusions

Owner's personal belongings.

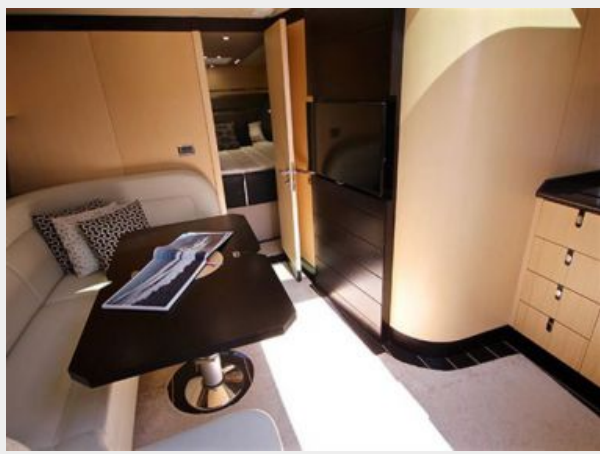
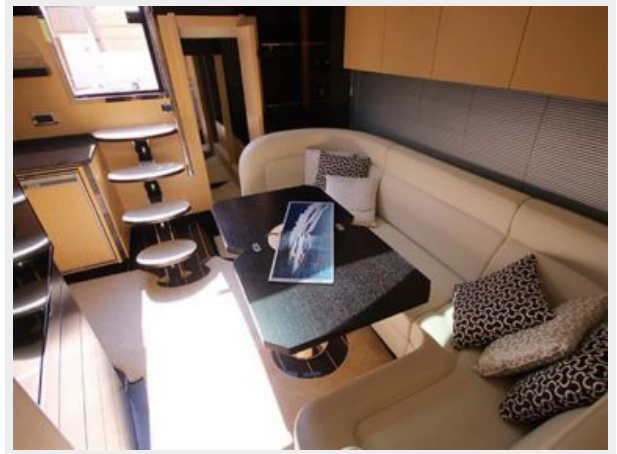
Disclaimer

The Company offers the details of this vessel or yacht in good faith but cannot guarantee or warrant the accuracy of this information nor warrant the condition of the vessel. A buyer should instruct his representatives, agents, or his surveyors, to investigate such details as the buyer desires validated. This vessel or yacht is offered subject to prior sale, price change, or withdrawal without notice.

PHOTOS









CONTACTS

Andrey Shestakov, leading yacht broker of the sales department of Shestakov Yacht Sales Inc. Shestakov Yacht Sales Inc., the official representative of the Miami/Fort Lauderdale FL headquarters.

Contact details

Email: andrey@shestakovyachtsales.com

Web: shestakovyachtsales.com/en/

Telephones

USA: +1(954)274-4435

Office hours

Monday – Saturday: **9:00 - 21:00** EDT

Sunday: **closed**

Address



Harbour Towne Marina, 850 NE 3rd St,
STE 213, Dania, FL 33004