

## IONA EX LAPA — FAIRLINE



**Builder:** FAIRLINE

**Year Built:** 2008

**Model:** Motor Yacht

**Price:** PRICE ON APPLICATION

**Location:** France

**LOA:** 67' 4" (20.52m)

**Beam:** 17' 5" (5.30m)

**Min Draft:** 9' 4" (2.82m)

**Max Draft:** 9' 4" (2.82m)

**Max Speed:** 32 Kts. (37 MPH)

Our experienced yacht broker, Andrey Shestakov, will help you choose and buy a yacht that best suits your needs IONA ex LAPA — FAIRLINE from our catalogue. Presently, at Shestakov Yacht Sales Inc., we have a wide variety of yachts available on our sale's list. We also work in close contact with all the big yacht manufacturers from all over the world.

If you would like to buy a yacht IONA ex LAPA — FAIRLINE or would like help answering any questions concerning purchasing, selling or chartering a yacht, please call +1(954)274-4435

---

# TABLE OF CONTENTS

---

TABLE OF CONTENTS	2
SPECIFICATIONS	3
Overview	3
Basic Information	3
Dimensions	3
Speed, Capacities and Weight	3
Accommodations	3
Hull and Deck Information	3
Engine Information	4
DETAILED INFORMATION	5
Accommodation	5
Additional	5
Vessel Description	5
Exclusions	5
Disclaimer	6
PHOTOS	7
CONTACTS	11
Contact details	11
Telephones	11
Office hours	11
Address	11

---

# SPECIFICATIONS

---

## Overview

---

"IONA" is a beautifully maintained example of the highly successful Fairline Squadron 68. No expense has been spared to maintain the boat in mint condition. Fitted with twin CAT C32 1550hp engines that deliver strong performance along with reasonable consumption, "IONA" offers luxurious interior and vast exterior deck areas that wont fail to impress. With only 2 owners from new and permanent Captain. Part exchanges will be considered and viewing is highly recommended. Please contact us for more information.

## Basic Information

---

**Category:** Motor Yacht

**Model Year:** 2008

**Year Built:** 2008

**Country:** France

## Dimensions

---

**LOA:** 67' 4" (20.52m)

**Beam:** 17' 5" (5.30m)

**Min Draft:** 9' 4" (2.82m)

**Max Draft:** 9' 4" (2.82m)

## Speed, Capacities and Weight

---

**Max Speed:** 32 Kts. (37 MPH)

**Displacement:** 92483.918909 Pounds

**Water Capacity:** 285.30581616 Gallons

**Fuel Capacity:** 1056.688208 Gallons

## Accommodations

---

**Total Berths:** 8

**Crew Berths:** 2

## Hull and Deck Information

---

**Hull Material:** GRP

**Hull Color:** White hull

---

## Engine Information

---

**Engines:** 2

**Manufacturer:** Caterpillar

**Model:** C32

**Fuel Type:** Diesel

## DETAILED INFORMATION

---

### Accommodation

---

"IONA" features an interior finished in natural high gloss American cherry with ivory leather upholstery and cream carpets. The main deck offers a nice Saloon and a dining table for 8 facing a fully equipped Galley. The lower deck boasts 4 Cabins including the magnificent full beam Master Cabin. Includes a Crew Cabin for 2 on the aft and a garage for a jetski or toy.

### Additional

---

Aft Cockpit cover Air conditioning throughout the boat (inc Crew Cabin) with reverse cycle Alarm systems for bilge and engines Aquatic AV CD player and radio with outside speakers on Flybridge Besenzone electro hydraulic passerelle Besenzone deck crane 350kg Bimini for Flybridge with stainless steel frame Bose Lifestyle sound system with Bose speakers De Dietrich microwave & grill De Dietrich 4 burner induction hob De Dietrich dishwasher De Dietrich grill on Flybridge wetbar Electric heated towel rails in heads Flat screen TVs in all Cabins Helm seat (internal) in black leather and electrically adjusted Hot water calorifier HRO watermaker 110 litres / hour Isotherm fridge on Flybridge wetbar Isotherm ice maker on Flybridge wetbar JVC radio/CD in owners Cabin Loewe 37" Spheros flat screen TV in Saloon Miele 150 litres fridge Miele 150 litres freezer Onan 22.5 kVA generator Platform shower hot and cold Raymarine E120 plotter/radar display Raymarine ST290 multi display depth/speed Raymarine autopilot Raymarine HD radar scanner 72 miles Raymarine Raystar 125 GPS receiver Raymarine VHF Ray240E Sidepower bow thruster Sidepower stern thruster Searchlight with dual station remote Shore power 240V system Teak laid cockpit Teak laid bathing platform Teak strip planking on Galley floor Teak strip planking on heads floor Techma electric quiet flush toilets in heads Telephone intercom system Track vision M7 satellite TV system with decoders Upholstery - white with blue piping Victron energy 100amp 24V battery charger Victron energy inverter Wooden venetian blinds to most windows Zanussi washer dryer

### Vessel Description

---

"IONA" is a beautifully maintained example of the highly successful Fairline Squadron 68. No expense has been spared to maintain the boat in mint condition. Fitted with twin CAT C32 1550hp engines that deliver strong performance along with reasonable consumption, "IONA" offers luxurious interior and vast exterior deck areas that won't fail to impress. With only 2 owners from new and permanent Captain. Part exchanges will be considered and viewing is highly recommended. Please contact us for more information.

### Exclusions

---

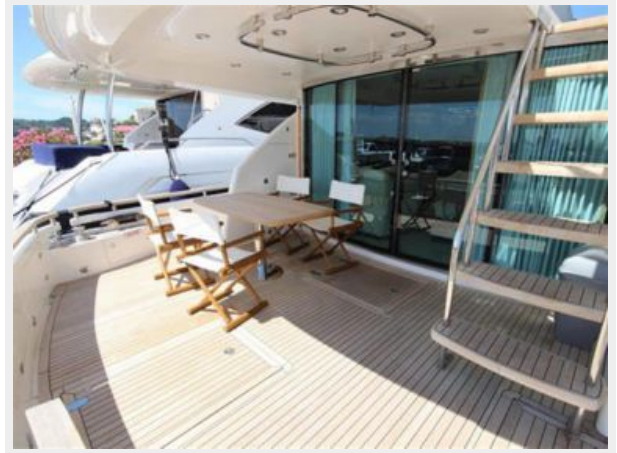
Owner's personal belongings.

## **Disclaimer**

---

The Company offers the details of this vessel or yacht in good faith but cannot guarantee or warrant the accuracy of this information nor warrant the condition of the vessel. A buyer should instruct his representatives, agents, or his surveyors, to investigate such details as the buyer desires validated. This vessel or yacht is offered subject to prior sale, price change, or withdrawal without notice.

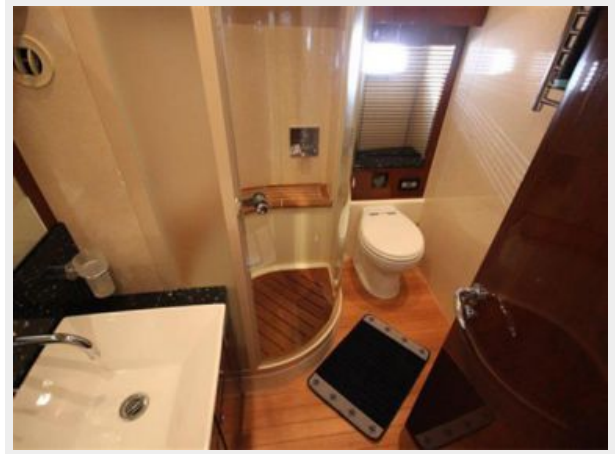
# PHOTOS











# CONTACTS

---

Andrey Shestakov, leading yacht broker of the sales department of Shestakov Yacht Sales Inc. Shestakov Yacht Sales Inc., the official representative of the Miami/Fort Lauderdale FL headquarters.

## Contact details

---

Email: [andrey@shestakovyachtsales.com](mailto:andrey@shestakovyachtsales.com)

Web: [shestakovyachtsales.com/en/](http://shestakovyachtsales.com/en/)

## Telephones

---

USA: +1(954)274-4435

## Office hours

---

Monday – Saturday: **9:00 - 21:00** EDT

Sunday: **closed**

## Address

---



Harbour Towne Marina, 850 NE 3rd St,  
STE 213, Dania, FL 33004