

PRINCESS MINERVA — PRINCESS YACHTS



Builder: PRINCESS YACHTS

Year Built: 1994

Model: Motor Yacht

Price: PRICE ON APPLICATION

Location: Malta

LOA: 40' 9" (12.40m)

Beam: 13' 7" (4.14m)

Min Draft: 10' 10" (3.30m)

Max Draft: 10' 10" (3.30m)

Max Speed: 29 Kts. (33 MPH)

Our experienced yacht broker, Andrey Shestakov, will help you choose and buy a yacht that best suits your needs **PRINCESS MINERVA — PRINCESS YACHTS** from our catalogue. Presently, at Shestakov Yacht Sales Inc., we have a wide variety of yachts available on our sale's list. We also work in close contact with all the big yacht manufacturers from all over the world.

If you would like to buy a yacht **PRINCESS MINERVA — PRINCESS YACHTS** or would like help answering any questions concerning purchasing, selling or chartering a yacht, please call **+1(954)274-4435**

TABLE OF CONTENTS

TABLE OF CONTENTS	2
SPECIFICATIONS	3
Overview	3
Basic Information	3
Dimensions	3
Speed, Capacities and Weight	3
Accommodations	3
Hull and Deck Information	4
Engine Information	4
DETAILED INFORMATION	5
Accommodation	5
Additional	5
Vessel Description	5
Exclusions	5
Disclaimer	5
PHOTOS	6
CONTACTS	9
Contact details	9
Telephones	9
Office hours	9
Address	9

SPECIFICATIONS

Overview

This is a modern classic Flybridge Cruiser which has been very well maintained by its dedicated owner. The boat has had a complete engine re-fit in 2006. Able to accommodate up to four overnight guests with two en-suite heads and with ample leisure areas both inside as well as outside, this Princess 410 really is an ideal weekend boat. The boat's engines were replaced in 2006 meaning she continues to perform exceptionally well on the water. The owner has recently had the engines serviced and the hull treated resulting in her immediate availability for a buyer looking to enjoy the season ahead. Viewings highly recommended. Includes berth in Msida Marina.

Basic Information

Category: Motor Yacht

Model Year: 1994

Year Built: 1994

Country: Malta

Dimensions

LOA: 40' 9" (12.40m)

Beam: 13' 7" (4.14m)

Min Draft: 10' 10" (3.30m)

Max Draft: 10' 10" (3.30m)

Speed, Capacities and Weight

Max Speed: 29 Kts. (33 MPH)

Displacement: 19841.60358 Pounds

Water Capacity: 29.05892572 Gallons

Fuel Capacity: 58.11785144 Gallons

Accommodations

Total Berths: 4

Hull and Deck Information

Hull Material: Other

Engine Information

Engines: 2

Manufacturer: Volvo

Model: Penta

Fuel Type: Diesel

DETAILED INFORMATION

Accommodation

Can accommodate four guests and has two en-suite bathrooms.

Additional

2 x ships plastimo 105 compasses, one new Annual lift with treatment and records available Auto Plotter Auxiliary Onen generator fully serviced Engines 2006 GPS Mercury 4.0 outboard Mooring available with Creek Marina shareholding New Canopies and covers New Fenders New internal upholstery with real leather New Tender New Turbo chargers fitted New Windless and anchor plus chain Opacmare passarelle Stereo/CD TV/DVD

Vessel Description

This is a modern classic Flybridge Cruiser which has been very well maintained by its dedicated owner. The boat has had a complete engine re-fit in 2006. Able to accommodate up to four overnight guests with two en-suite heads and with ample leisure areas both inside as well as outside, this Princess 410 really is an ideal weekend boat. The boat's engines were replaced in 2006 meaning she continues to perform exceptionally well on the water. The owner has recently had the engines serviced and the hull treated resulting in her immediate availability for a buyer looking to enjoy the season ahead. Viewings highly recommended. Includes berth in Msida Marina.

Exclusions

Owner's personal belongings.

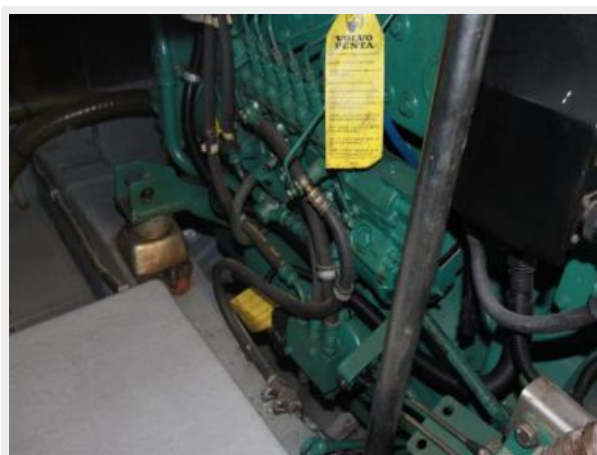
Disclaimer

The Company offers the details of this vessel or yacht in good faith but cannot guarantee or warrant the accuracy of this information nor warrant the condition of the vessel. A buyer should instruct his representatives, agents, or his surveyors, to investigate such details as the buyer desires validated. This vessel or yacht is offered subject to prior sale, price change, or withdrawal without notice.

PHOTOS







CONTACTS

Andrey Shestakov, leading yacht broker of the sales department of Shestakov Yacht Sales Inc. Shestakov Yacht Sales Inc., the official representative of the Miami/Fort Lauderdale FL headquarters.

Contact details

Email: **andrey@shestakovyachtsales.com**

Web: shestakovyachtsales.com/en/

Telephones

USA: **+1(954)274-4435**

Office hours

Monday – Saturday: **9:00 - 21:00 EDT**

Sunday: **closed**

Address



Harbour Towne Marina, 850 NE 3rd St,
STE 213, Dania, FL 33004