

## ABSOLUTELY — ABSOLUTE



**Builder:** ABSOLUTE

**Year Built:** 2007

**Model:** Motor Yacht

**Price:** PRICE ON APPLICATION

**Location:** France

**LOA:** 54' 2" (16.50m)

**Beam:** 15' 4" (4.65m)

**Min Draft:** 3' 10" (1.15m)

**Max Draft:** 3' 10" (1.15m)

**Max Speed:** 32 Kts. (37 MPH)

Our experienced yacht broker, Andrey Shestakov, will help you choose and buy a yacht that best suits your needs **ABSOLUTELY — ABSOLUTE** from our catalogue. Presently, at Shestakov Yacht Sales Inc., we have a wide variety of yachts available on our sale's list. We also work in close contact with all the big yacht manufacturers from all over the world.

If you would like to buy a yacht **ABSOLUTELY — ABSOLUTE** or would like help answering any questions concerning purchasing, selling or chartering a yacht, please call **+1(954)274-4435**

---

# TABLE OF CONTENTS

---

TABLE OF CONTENTS	2
SPECIFICATIONS	3
Overview	3
Basic Information	3
Dimensions	3
Speed, Capacities and Weight	3
Accommodations	3
Hull and Deck Information	4
Engine Information	4
DETAILED INFORMATION	5
Accommodation	5
Additional	5
Vessel Description	5
Exclusions	5
Disclaimer	5
PHOTOS	6
CONTACTS	10
Contact details	10
Telephones	10
Office hours	10
Address	10

---

# SPECIFICATIONS

---

## Overview

---

"ABSOLUTELY" is an excellent example of the 2006 Absolute 56. Featuring accommodation for 6 guests within 3 Cabins and a spacious Cockpit with an opening hard top, she is an ideal vessel for entertaining family and friends. Additional extras include air conditioning, a hydraulic passerelle, a well equipped wet bar and a rear facing camera. Viewing is highly recommended, please contact us for more information.

## Basic Information

---

**Category:** Motor Yacht

**Model Year:** 2007

**Year Built:** 2007

**Country:** France

**Vessel Top:** Hardtop

## Dimensions

---

**LOA:** 54' 2" (16.50m)

**Beam:** 15' 4" (4.65m)

**Min Draft:** 3' 10" (1.15m)

**Max Draft:** 3' 10" (1.15m)

## Speed, Capacities and Weight

---

**Max Speed:** 32 Kts. (37 MPH)

**Displacement:** 54211.6702258 Pounds

**Water Capacity:** 145.2946286 Gallons

**Fuel Capacity:** 422.6752832 Gallons

## Accommodations

---

**Total Berths:** 6

---

## Hull and Deck Information

---

**Hull Material:** GRP

**Hull Color:** White hull with navy blue hull band

---

## Engine Information

---

**Engines:** 2

**Manufacturer:** Volvo Penta

**Model:** IPS 600

**Fuel Type:** Diesel

---

## DETAILED INFORMATION

---

### Accommodation

---

"ABSOLUTELY" features 6 Berths in 3 Cabins. The Master Cabin is located aft with vanity area and ensuite bathroom. The Ensuite VIP Guest Cabin is located forward and a Pullman Bunk Cabin is to starboard. The Cockpit features a spacious seating area, sun bathing pad and a well equipped Wet Bar.

### Additional

---

Air conditioning in the Cockpit, Saloon & 3 Cabins Cockpit cover Dashboard cover Galley with dishwasher, fridge, microwave & oven Generator MASE IS9 Hydraulic passerelle with remote control LCD 20" Sony TV in Saloon & 3 Guest Cabins Mooring cleats Opening hard top Raymarine E120 radar / colour card reader and GPS antenna Rear camera connected to the Raymarine E120 screen Wet bar with ice maker, fridge, grill & sink

### Vessel Description

---

"ABSOLUTELY" is an excellent example of the 2006 Absolute 56. Featuring accommodation for 6 guests within 3 Cabins and a spacious Cockpit with an opening hard top, she is an ideal vessel for entertaining family and friends. Additional extras include air conditioning, a hydraulic passerelle, a well equipped wet bar and a rear facing camera. Viewing is highly recommended, please contact us for more information.

### Exclusions

---

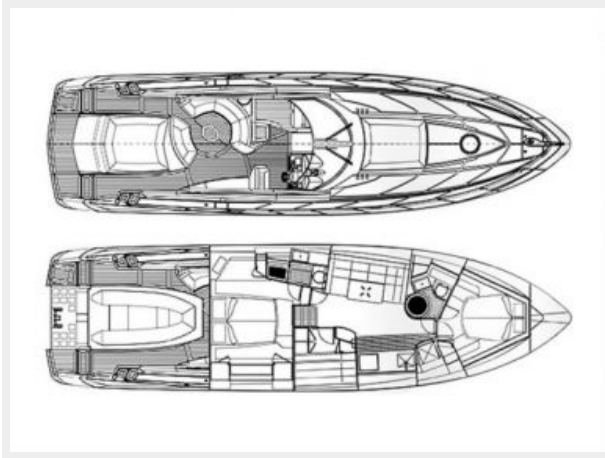
Owner's personal belongings.

### Disclaimer

---

The Company offers the details of this vessel or yacht in good faith but cannot guarantee or warrant the accuracy of this information nor warrant the condition of the vessel. A buyer should instruct his representatives, agents, or his surveyors, to investigate such details as the buyer desires validated. This vessel or yacht is offered subject to prior sale, price change, or withdrawal without notice.

# PHOTOS

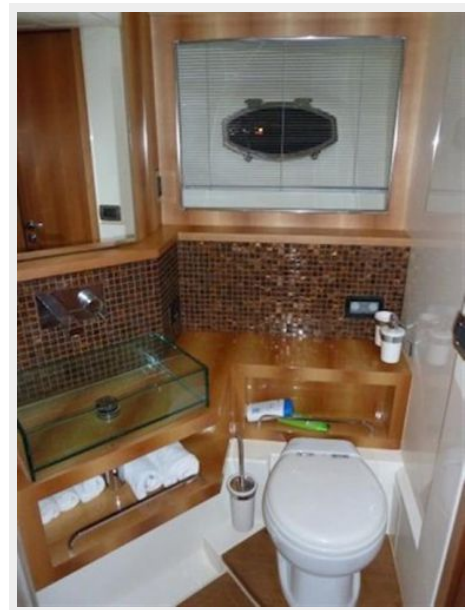












---

# CONTACTS

---

Andrey Shestakov, leading yacht broker of the sales department of Shestakov Yacht Sales Inc. Shestakov Yacht Sales Inc., the official representative of the Miami/Fort Lauderdale FL headquarters.

---

## Contact details

---

Email: **andrey@shestakovyachtsales.com**

Web: [shestakovyachtsales.com/en/](http://shestakovyachtsales.com/en/)

---

## Telephones

---

USA: +1(954)274-4435

---

## Office hours

---

Monday – Saturday: **9:00 - 21:00** EDT

Sunday: **closed**

---

## Address

---



Harbour Towne Marina, 850 NE 3rd St,  
STE 213, Dania, FL 33004