

## GOT WOOD — AZIMUT



**Судостроитель:** [AZIMUT](#)

**Год постройки:** 2009

**Модель:** Моторная яхта

**Цена:** **ЦЕНА ЯХТЫ ПО ЗАПРОСУ**

**Местонахождение:** United States

**Длина общая:** 58' 0" (17.68m)

**Ширина:** 16' 3" (4.95m)

**Мин. осадка:** 4' 6" (1.37m)

**Крейс. скорость:** 28 Kts. (32 MPH)

**Макс. скорость:** 35 Kts. (40 MPH)

Купить **Got Wood — AZIMUT** а также выбрать подходящую вам яхту из нашего каталога яхт вам поможет опытный яхтенный брокер Андрей Шестаков. На сегодняшний день компания **Shestakov Yacht Sales Inc.** имеет большое количество яхт в собственном списке продаж, а также тесно сотрудничает со всеми крупными яхтенными производителями по всему миру.

Для того чтобы купить яхту **Got Wood — AZIMUT** а также проконсультироваться по любому вопросу связанному с покупкой, продажей, чартером яхт позвоните по телефону **+7(918)465-66-44**.

# ОГЛАВЛЕНИЕ

ОГЛАВЛЕНИЕ	2
ХАРАКТЕРИСТИКИ	6
Обзор	6
Основная информация	7
Размеры	7
Скорость, вместимость и масса	7
Размещение	7
Корпус и палуба	7
Информация о двигателе	8
ПОДРОБНОЕ ОПИСАНИЕ	9
Vessel Overview	9
Исключения	18
Отказ от ответственности	18
ФОТОГРАФИИ	19
Main Salon	19
Main Salon	19
Main Salon Entertainment	19
Main Salon	19
Main Salon	19
Galley Entrance	19
Main Salon	20
Dinette	20
Galley	20
Galley	20
Galley Refrigerator	20
Galley	20
Galley Bar	21
Galley Storage	21

Galley Dishwasher	21
Helm	21
Helm	21
Helm Display	21
Helm Display	22
Helm	22
Helm	22
Master Stateroom	22
Master Stateroom	22
Master Stateroom	22
Master Stateroom	23
Master Stateroom	23
Master Stateroom	23
Master Stateroom	23
Master Stateroom Head	23
Master Stateroom Head	23
Master Stateroom Head	24
Master Stateroom Head	24
Master Stateroom Shower	24
Master Stateroom Head	24
Forward Stateroom	25
Forward Stateroom	25
Forward Stateroom	25
Forward Stateroom Entertainment	25
Forward Stateroom Head	25
Starboard Stateroom	25
Starboard Stateroom Head	26
Starboard Stateroom	26
Starboard Stateroom Head	26

Starboard Stateroom Head	26
Aft Deck	27
Aft Deck	27
Aft Deck	27
Aft Deck	27
Aft Deck	27
Aft Deck	27
Aft Deck	28
Aft Deck	28
Flybridge Bar	28
Flybridge Helm	28
Flybridge	28
Flybridge	28
Flybridge	29
Flybridge Helm	29
Flybridge Hardtop	29
Flybridge Hardtop	29
Flybridge	29
Flybridge Tender Boom	29
Flybridge	30
Aft Deck	30
Aft Deck	30
Aft Deck Storage	30
Portside	30
Aft Deck	30
Portside	31
Portside	31
Portside Railing	31
Portside	31

Flybridge	31
Flybridge Hardtop	31
Flybridge	32
Flybridge Hardtop	32
Flybridge Hardtop	32
Starboard	32
Bow Railing	32
Bow Anchor	32
Bow	33
Bow Pulpit	33
Bow	33
Bow	33
Starboard	34
Bow	34
Bow	34
Starboard	34
Starboard	35
Engine Room	35
Engine Room	35
Engine Room	35
Engine Room	35
КОНТАКТЫ	36
Контактная информация	36
Телефоны	36
Время работы	36
Адрес	36

---

# ХАРАКТЕРИСТИКИ

---

## Обзор

---

GOT WOOD, a 2009 Azimut 58, has more features than any other boat under 60' and as many as you would find on yachts much larger. This is truly a yacht, not a boat. Take for instance the expansive teak floored aft deck which is raised high off the water affording you the best marina view, the davit on the flybridge for storage of tender and toys or the hydraulic swim platform, all features you wouldn't expect to find on a yacht under 60'. Once on the aft deck you can access the Main Salon, Flybridge, Swim Platform or Aft Stateroom. Upon entering the Main Salon you are immediately greeted by a perfectly designed interior which uses a combination of light oak wood, dark high gloss painted surfaces, stainless accents and rich leathers to give a contemporary yet warm feeling throughout. You will instantly recognize the quality of the fit and finish which echoes the yachts pedigree that Azimut is renowned for. You can immediately envision entertaining guests in the large main salon or just lounging around with the entire family while watching a movie. In addition no compromises will be made when it comes to preparing meals in the fully equipped galley that is separate from all the other areas. The staterooms size, ceiling height and many storage areas are features you would expect to see on a yacht and GOT WOOD does not disappoint. The Master Stateroom with walk around bed, vanity and en suite head offers all the amenities you will ever need. In addition your guests will be spoiled with the accommodations they are afforded in one of two VIP staterooms. As if that's not enough there is a fourth stateroom for guest overflow or the occasional captain or mate.

Once outside the yacht you experience the endless flybridge deck space where there are no compromises on toys or tenders since you can bring both! Whether is the flybridge davit crane or the hydraulic swim platform launching the toys is easy. Of course the Azimut styling gives this 58' a sleek yet sophisticated exterior design that is sure to catch everyone's eye.

This is the perfect owner operator yacht. One that you and the entire family will be able to enjoy using for many years to come. GOT WOOD has the highest quality equipment built by brands you are familiar with such as MAN, Raymarine and Kohler. With equipment like this you can be confident in the yachts ability to perform and comfortable knowing that service is available everywhere.

If you are in the market for a yacht 50' - 70' make it a point to view GOT WOOD and let her exceed your expectations.

## Основная информация

---

**Тип судна:** Моторная яхта

**Подкатегория:** Flybridge

**Модельный год:** 2009

**Год постройки:** 2009

**Страна:** United States

**Верх:** Hardtop

## Размеры

---

**Длина общая:** 58' 0" (17.68m)

**Ширина:** 16' 3" (4.95m)

**Мин. осадка:** 4' 6" (1.37m)

## Скорость, вместимость и масса

---

**Крейс. скорость:** 28 Kts. (32 MPH)

**Макс. скорость:** 35 Kts. (40 MPH)

**Водоизмещение:** 56000 Pounds

**Вместимость воды:** 166 Gallons

**Объем топливного бака:** 740 Gallons

## Размещение

---

**Всего кают:** 3

**Всего коек:** 4

**Всего ком. состава:** 3

## Корпус и палуба

---

**Материал корпуса:** Fiberglass

## Информация о двигателе

---

**Двигатели:** 2

**Производитель:** MAN

**Модель:** R6

**Тип двигателя:** Inboard

**Тип топлива:** Diesel



---

# ПОДРОБНОЕ ОПИСАНИЕ

---

## Vessel Overview

---

### KEY FEATURES AND UPGRADES

- MAN R6 800 Engines-port side 1000 hours and starboard 400- New engine replaced just over 2 years ago.
- All valve covers and gaskets replaced by MAN mechanic
- New water pump in generator 60Hz USA Electrical
- Engine room re-painted/gelcoat recently
- Crew Cabin w/ head
- Bow and Stern thruster
- Teak lifting bathing platform
- Double racor fuel filters
- Raymarine E 120
- Hard top
- Openable scenic windows in VIP
- Chain counter
- Wooden flooring in dinette and helm area control for spotlight on bridge and lower helm
- Washer-Dryer
- Crane on aft deck flybridge
- BBQ on flybridge
- Sofa bed in salon
- Safe in master stateroom
- Icemaker on flybridge
- DSS Sat TV system
- AV package
- Dishwasher in galley
- Full canvas covers
- Bow sun pad
- Upgraded mattress in staterooms
- Electro hydraulic retracting gangway
- Hi-lo system upgraded salon table
- Salon carpet runners
- Sirius weather
- 2 sets of carpet interior runners
- Sea Stairs for port and stb.
- 42" Sony TV- salon
- Replaced Isotherm fridge in galley
- Dishwasher

### MAIN SALON DESCRIPTION

As you enter the yacht through the Main Salon you will see the light wood, dark lacquered surfaces, stainless accents and rich leather that all make her feel contemporary yet inviting. On all three sides of the room there is leather wrap seating. Perfectly placed in the corner for all to view is a large LCD TV, complete with Bose surround sound system. The table in the center of the room ingeniously raises and lowers to the perfect height for either a coffee table or an additional dining table. Storage can be found under all the seating and the entire floor is covered in light carpeting. The large aft glass door and huge side windows allow in plenty of outside lighting or can be covered with the designer drapes.

Moving forward to the starboard side is a large dining settee with seating for six. An LCD TV sits directly across from the seating group and just aft of the LCD there is storage for the custom Azimut dining ware. This entire area sits directly across from the Galley however since the Galley is separate there are no concerns about people interfering each other.

Once in the Galley you have complete access to all the appliances and a large working surface made of Granulon for maximum durability and a huge double basin stainless steel sink. The Galley is exceptionally well designed with many of the appliances being hidden out of site yet easily accessible. Overhead there is additional storage for galley equipment. With the open Galley layout serving guests in either the Main Salon or the Dinette area is made simple.

Lastly on the Main Deck is the Pilothouse complete with all the navigational equipment, electrical controls and additional space for a computer desk to set up your office.

#### Main Salon:

- 8 Seat sofa on the port side
- Carpet
- Halogen lights
- Curtain on bulkheads
- Storage unit in Decape oak on starboard side
- 2 seat sofa on starboard side
- Curtain for salon door
- Sony Bravia LCD Digital TV
- Bose Surround Sound and DVD system 5 additional Bose speakers
- (2) Settee with coffee table
- Dining settee starboard side across from galley

#### Dinette:

- Relaxation area for 5-6 persons
- Carpet
- Halogen lights
- Emergency exit hatch from owner's cabin
- Decape oak table with fixed centre and extending top

#### Galley:

- Domestic Dishwasher
- IsoTherm Refrigerator
- VitriFrigo Freezer
- GE Microwave
- Haier Washer/Dryer Combo
- Three burner Cermaic glass cooktop with fiddle rail
- Wood floors
- Azimut 5pc S. S. Cookware
- Azimut Glassware/Service/Flatware (4)
- Worktop in Granulon with two stainless steel sinks
- Extractor hood
- Cabinets and drawer in decape oak under worktop
- Walkway in decape oak
- Cabinet for china, glasses and cutlery storage with crystal glass shelves
- Store room and service compartments adjacent to the cabin staircase

#### Pilothouse:

- Adjustable single pilot seat
- Desk for computer, courtesy and night time navigation lights (red)
- Brown painted rudder in stainless steel
- Power steering
- Height adjustable steering wheel
- The helm station includes: winch control, rev counter, hour meter, engine oil pressure gauge, engine water thermometers, ammeters, engine alarm LED series, alarm for water in the fuel, shore-on LED, fresh water tank level gauge, fuel level gauge, rudder angle indicator, trim tab control with indicators, washer wiper controls
- Switches for: side windows that can be electronically opened, navigation lights, horn, generator and engine room fans
- Electronic interfaced navigation instruments
- 12V cigarette lighter type power socket
- CRUISE COMMAND electronic remote controls
- Engine start/off keys with button for engine Syncro operation
- Engine panel complete with optical and acoustic alarms
- Water and fuel level gauges
- Alternator ammeters

#### Pilothouse Navigation Electronics:

- 12V cigarette lighter type socket
- Cruise command single lever electronic remote controls
- Engine start/off buttons
- Engine instruments with optical acoustic alarms
- VHF radiotelephone
- Rev counter

- Alarm LEDs
- Trim tab controls

## MASTER STATEROOM AND HEAD DESCRIPTION

The Master Stateroom will take you by surprise when you see just how large the windows on the port and starboard side are. A styling statement from the outside of the yacht these windows allow you to never miss that beautiful sunset or feel like your stuffed down in a cabin. The large open feeling that is created makes this room one you look forward to being in. In the center of the stateroom is a large bed with a nightstand. On the forward wall is a large LCD TV with Bose surround sound and to the starboard side is a vanity that has a top when lifted up that reveals a mirror on the underside. In addition there are three storage drawers on either side of the vanity. You enter the Master Head located in the aft corner of the stateroom. The Master Head is spacious with and tastefully designed. The raised bowl sink sits atop the counter with the mirror above that. Inboard is a full height walk in shower that has a glass enclosure and a large wood covered seat. The entire area offers you the space you would expect on a yacht.

### Master Stateroom:

- Full size Berth
- His and hers closets
- (4) Logitech Wall mounted speakers
- Long windows on either side with opening ports
- Desk/Office area with shelving, hidden jewelry box, and drawers
- Queen size bed with locker accessible from top
- Leather bed rim, oak and leather headboard
- Wardrobe with interior and inside shelves in natural cedar wood
- Large wardrobe on port side with natural cedar wood interiors and full length mirror
- Built in drawer unit starboard side
- Vanity unit with drawers
- Carpet
- Double curtains for windows
- Emergency exit via ceiling above the vanity unit
- Doors and frame in Decape oak
- Direct access to the master head compartment
- Azimut reading lights
- Ready for TV installation
- Wide windows in the hull that can be partially opened

### Master Stateroom Head:

- Glass vessel sink
- Teak floor grate in shower
- Lighted glass shelves
- Access from Master Cabin

- Separate shower with bench
- Shower column with soap tray and mixer taps
- Decape oak wooden floor
- Air extractor TECMA WC
- Venetian blinds in wood
- Round porthole
- Storage cabinet behind WC
- Storage behind the shower
- Shelf above sink with mirror

## **FORWARD VIP AND HEAD DESCRIPTION**

The forward VIP stateroom has two split single beds with a nightstand in the middle. Above each of the beds is a very large porthole again allowing the outside light to permeate the area and allowing for your guest to experience the same open feeling as they have throughout the entire yacht. Below each of the bunks is plenty of storage and the entire room decorated in the same high quality finishes found in the Master Stateroom including an LCD TV mounted on the wall. In addition your guests will have their own head complete with raised bowl sink, mirror, toilet, and ingenious shower stall that when not in use doubles the usable floor space in the head.

### **VIP Stateroom:**

- Queen size lift up storage bed
- Leather bed rim
- Decape oak and leather headboard
- Shelves above the windows
- One wardrobe on each side with dress hangers and shelves
- Wardrobe interiors in natural cedar wood
- Panoramic windows
- Deck hatch with shade and mosquito net
- Azimut reading lights
- Decape oak doors and frames
- Direct access to head compartment

### **VIP Head:**

- Access from VIP cabin
- Round plexiglass shower with wooden grating
- Shower column with soap tray and mixer tap
- Round porthole
- Decape oak wooden floor
- TECMA WC
- Venetian blinds in wood
- Shelf above sink with mirror
- Cabin access corridor/stairway

- Cabinet with shelves

## STARBOARD VIP STATEROOM

The starboard VIP stateroom has two split single beds with a nightstand in the middle. Above each of the outboard bed is a very large porthole which can be opened to allow the cool breeze from the outside in. Below each of the bunks is plenty of storage and the entire room decorated in the same high quality finishes found in the Master Stateroom including an LCD TV mounted on the wall. In addition your guests will have their own head complete with raised bowl sink, mirror, toilet, and ingenious shower stall that when not in use doubles the usable floor space in the head. This head also can be accessed from the hallway so that your guests have use of an easily accessible day head.

Starboard VIP Stateroom:

- Sliding twin beds
- Central nightstand and switches
- Built in wardrobe with shelves and internal mirror
- Carpet
- Round porthole
- Azimut reading lights
- Shelf above the porthole in Decape oak
- Doors and frames in Decape oak

## FLYBRIDGE DESCRIPTION

An area on GOT WOOD that very few yachts this size can match is the flybridge. Her flybridge is twice the size of most boats in this class. Starting from the forward area you have a steering station on the port side complete with all the same electronics found in the Pilothouse. To the starboard side of the helm you have a great sun pad area for your family to lounge on while you navigate. Moving aft there is a large U shaped seating group with a teak table that can be expanded to accommodate cocktail parties or large meals. As you look up from this area you will immediately appreciate the fiberglass hardtop that creates much needed shade covering from the sun. However the Azimut 58 ingeniously integrates six glass panels that during the day let in the perfect amount of sun and at night allow you and your family a clear view of the stars. On the port side directly across from the seating area is a BBQ grill, sink, refrigerator, stereo and plenty of storage. This entire entertainment cabinet is covered with teak doors and tops, again a feature only found on larger yachts.

Moving all the way aft you will see the custom davit, which allows you to bring a small tender and scooter up for storage. The mounts on the flybridge are already in place for a Vespa Scooter and a small tender. All of this area is accessed conveniently from the aft deck via a fiberglass and teak built in stairwell that is designed for easily going up and down even with items in hand.

Fly Bridge:

- External access via GPR stairway with teak steps up to fly bridge
- Fore windbreak in stainless steel and fume Plexiglass
- Pilot seat sofa (two seat)
- Unit with fridge and sink with running cold water
- C-shaped sofa + relaxation area
- 2 storage lockers
- Stainless steel handrails
- Steering wheel in stainless steel and height adjustable steering
- Controls for acoustic alarm, winch, trim tabs, chain counter indicator
- Manually adjustable searchlight
- Watertight radio/CD player connected to 2 speakers on the roll bar and 2 in the cockpit+ remote control in cockpit
- Table
- Vitrifrigo Refrigerator
- Kenyon Custom Grill
- Sony Stereo Head Unit 52Wx4
- Teak Deck
- Ice Maker
- Covers
- Crane and cradles for tender (Lifting capacity: 250 kg)

#### Flybrdige Navigation Electronics:

- Raymarine E120 Unit
- Raymarine Smart Pilot ST6002 Autopilot System
- Raymarine Ray240 VHF Radio
- Trim Tab Indicator System
- Quick Winlass Remote System Chain Counter CHC 1202M
- ITT Jabsco Searchlight Remote
- SeaFire Fire Suppression System Monitor
- SidePower Thruster Control Panel

## AFT AREA DESCRIPTION

GOT WOOD offers features that other boats under 60' just don't have and the transom area is one of the best examples. You have access to a hydraulic platform that can easily lower the tender or be partially submerged for ease of entry into the water. In addition you have access from the transom to the fourth stateroom. This can be used for guest overflow or those times when you have a captain or mate aboard. You also have a passarelle for aft boarding in those marinas that are just too hard to get to from sides, a feature you will be most thankful for when you really have to have it.

#### Aft Deck:

- Built in seating group

- Teak table
- Folding chairs
- Stainless framed glass door
- Access to fly bridge
- Overhead lighting
- Access to foredeck

#### Transom Area:

- Integrated fairleads in stainless steel
- Two stainless steel cleats, aft
- Antifouling paint
- Double salon door in stainless steel and tempered crystal glass
- Bathing platform/tender lift, maximum lifting capacity 450kg with teak layed floor
- Telescopic electro hydraulic gangway lifting capacity 300kg
- Bathing platform steps in stainless steel and teak
- Mooring hook
- Shore power sockets
- Shower with hot/cold water
- Teak cockpit floor
- Cockpit bench
- Dimmers for cockpit lights

#### Electrical:

- 110V A/C 60Hz for USA Version
- System supply in 24V DC
- Engine system supply in 24V DC
- 24V DC from battery group
- 12V DC obtained by a power reducer
- Dedicated supplier for VHF
- STD Version: Shore power socket 220V 50A
- A/C Version 2 shore power sockets
- 8 BATTERIES (95 Ah) for service users
- 4 BATTERIES (95 Ah) for engine start up
- 1 BATTERY (75 Ah) for generator
- All groups are activated by soderep battery charger for the generator
- Dolphin 24V 80 A Electronic battery charger for the starter and service groups
- Dolphin 12V 10A Electronic battery charger for the generator
- Two main control panels (AC) one in the engine room, the other one in the helm station
- 2 AC panels in the galley the other one in the crew cabin
- Emergency panel in the cockpit with control to cut off power to the boat
- Watertight panels for the engine room with protective hatch
- Electrically operated devices protected by high reliability.
- Halogen spots (24V, 20W)



## Mechanical:

- Shaft line configuration
- Shaft length 3177 3177 mm
- Shaft angle 10.3
- Shaft diameter 70 mm
- Distance between centers 1400 mm
- Construction material MARINOX
- Stern tube PSS 4" 1/2
- Steering manufacturer SBM
- Round profile model
- Props manufacturer Italian Propellers
- 4 blades
- Diam. 60 mm
- Pitch 1070mm
- NiBrAl designed and built to optimize hull performance and to guarantee outstanding comfort during navigation
- Rudders NiBrAl alloy surface suitable to assure excellent characteristics for maneuvering
- Bow Thruster 6.5 kW side power

## Main Deck:

- Stainless steel handrails
- High resistant stainless steel and PVC guard
- Non slip surface
- Anchor peak
- Two midship cleats
- Navigation lights
- 2 fuel fillers with protection cover
- Fresh water filler starboard side in the anchor cover area
- Black water discharge on the port side

## Bow:

- Anchor chain compartment
- 25kg DELTA anchor
- 1700W 24V winch
- Stainless steel anchor nose
- 2 fore cleats
- 3 electric wipers with windshield washer
- Sunbathing cushions
- Drink holders
- Handrails

## Engine Room:

- Access from cockpit
- Engines installed on the silent block
- STD engine compartment, generator, battery packs OPT for A/C compressors, watermaker
- (2)underwater engine exhaust outlets with structural GRP pipes, minimum bypass pipe and manifolds in stainless steel
- (2)air intakes
- 24V extractor
- (2)3" engine sea water intakes with shut off valves and metal mesh filter
- (2)1" ancillary sea water intakes (A/C and generator) with shut off valve and metal mesh filter
- Dunnage floor in high resistant plastic material(stainless steel frame)
- Sound proofing

---

## Исключения

---

При продаже яхты исключаются личные вещи владельца.

---

## Отказ от ответственности

---

Компания предоставляет описание судна или яхты добросовестно, но не может гарантировать точность этой информации, а также не ручается за техническое состояние. Покупатель должен проинструктировать своих агентов или оценщиков исследовать представленную информацию более подробно, по собственному желанию. Продажа судна или яхты, изменение цены или снятие с продажи будет происходить без предварительного уведомления.

# ФОТОГРАФИИ

**Main Salon**



**Main Salon**



**Main Salon Entertainment**



**Main Salon**



**Main Salon**



**Galley Entrance**



**Main Salon**



**Dinette**



**Galley**



**Galley**



**Galley**



**Galley Refrigerator**





**Galley Bar**



**Galley Storage**



**Galley Dishwasher**



**Helm**



**Helm**



**Helm Display**



**Helm Display**



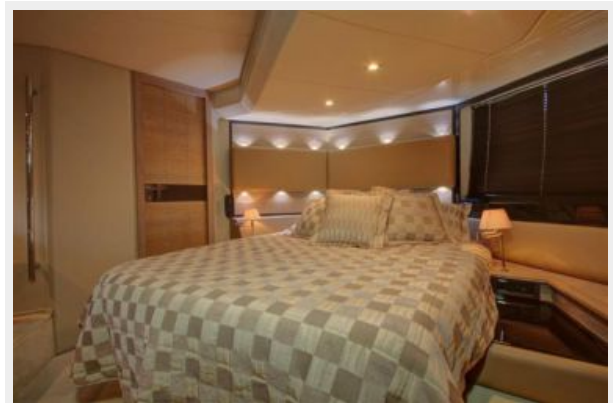
**Helm**



**Helm**



**Master Stateroom**



**Master Stateroom**



**Master Stateroom**





**Master Stateroom**



**Master Stateroom**



**Master Stateroom**



**Master Stateroom**



**Master Stateroom Head**



**Master Stateroom Head**



**Master Stateroom Head**



**Master Stateroom Head**



**Master Stateroom Shower**



**Master Stateroom Head**





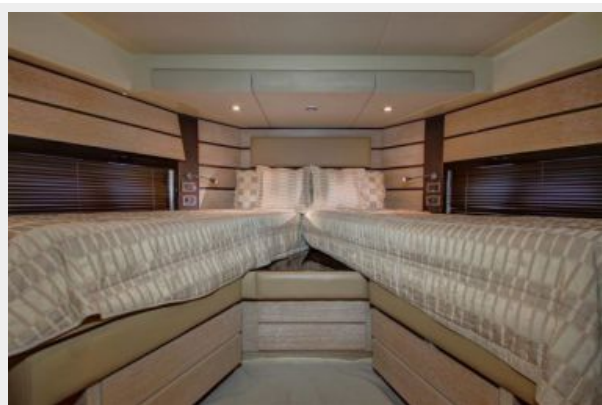
**Forward Stateroom**



**Forward Stateroom**



**Forward Stateroom**



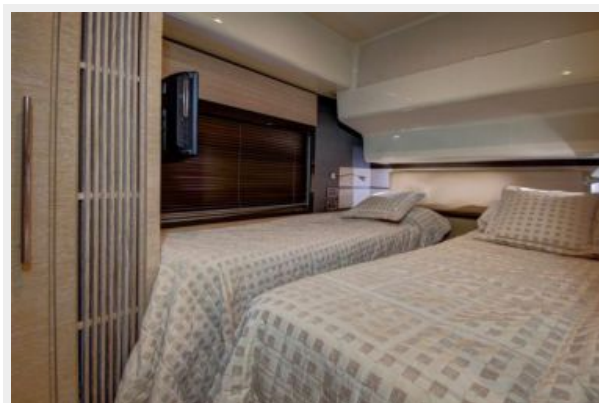
**Forward Stateroom Entertainment**



**Forward Stateroom Head**



**Starboard Stateroom**



**Starboard Stateroom**



**Starboard Stateroom Head**



**Starboard Stateroom Head**



**Starboard Stateroom Head**





**Aft Deck**



**Aft Deck**



**Aft Deck**



**Aft Deck**



**Aft Deck**



**Aft Deck**



**Aft Deck**



**Aft Deck**



**Flybridge Bar**



**Flybridge Helm**



**Flybridge**



**Flybridge**





**Flybridge**



**Flybridge Helm**



**Flybridge Hardtop**



**Flybridge Hardtop**



**Flybridge**



**Flybridge Tender Boom**



**Flybridge**



**Aft Deck**



**Aft Deck Storage**



**Aft Deck**



**Aft Deck**



**Portside**





**Portside**



**Portside**



**Portside Railing**



**Portside**



**Flybridge**



**Flybridge Hardtop**



**Flybridge**



**Flybridge Hardtop**



**Flybridge Hardtop**



**Starboard**



**Bow Railing**



**Bow Anchor**





**Bow Pulpit**



**Bow**



**Bow**



**Bow**



**Starboard**



**Bow**



**Bow**



**Starboard**



**Starboard**



**Engine Room**



**Engine Room**



**Engine Room**



**Engine Room**



# КОНТАКТЫ

---

Андрей Шестаков (Andrey Shestakov) – ведущий яхтенный брокер отдела продаж яхт и судов компании Shestakov Yacht Sales Inc. Официальный представитель Shestakov Yacht Sales Inc. для русскоговорящих клиентов в центральном офисе компании в Майами/Форт Лодердейл/Флорида/США.

## Контактная информация

---

Email: [andrey@shestakovyachtsales.com](mailto:andrey@shestakovyachtsales.com)

Web: [shestakovyachtsales.com](http://shestakovyachtsales.com)

## Телефоны

---

Краснодарский край: **+7(918)465-66-44**

США, Майами, Флорида: **+1(954)274-4435**

## Время работы

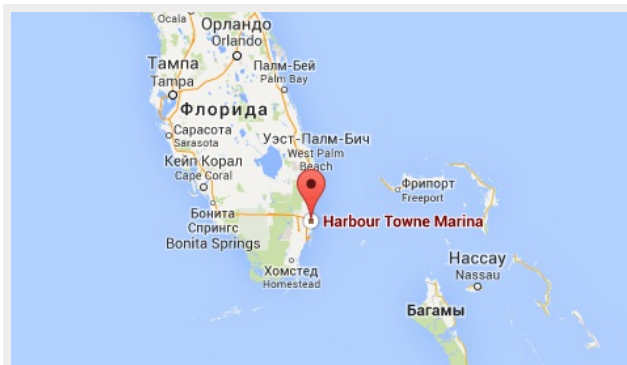
---

Понедельник – Суббота: **9:00 - 21:00**  
EDT

Воскресенье: **Закрето**

## Адрес

---



Harbour Towne Marina, 850 NE 3rd St,  
STE 213, Dania, FL 33004