

## HALFTIME — LAZZARA



**Судостроитель:** LAZZARA

**Год постройки:** 2005

**Модель:** Моторная яхта

**Цена:** **ЦЕНА ЯХТЫ ПО ЗАПРОСУ**

**Местонахождение:** United States

**Длина общая:** 116' 0" (35.36m)

**Ширина:** 23' 1" (7.04m)

**Мин. осадка:** 5' 6" (1.68m)

**Макс. осадка:** 5' 6" (1.68m)

**Крейс. скорость:** 21 Kts. (24 MPH)

**Макс. скорость:** 23 Kts. (26 MPH)

Купить **HALFTIME — LAZZARA** а также выбрать подходящую вам яхту из нашего каталога яхт вам поможет опытный яхтенный брокер Андрей Шестаков. На сегодняшний день компания **Shestakov Yacht Sales Inc.** имеет большое количество яхт в собственном списке продаж, а также тесно сотрудничает со всеми крупными яхтенными производителями по всему миру.

Для того чтобы купить яхту **HALFTIME — LAZZARA** а также проконсультироваться по любому вопросу связанному с покупкой, продажей, чартером яхт позвоните по телефону **+7(918)465-66-44**.

# ОГЛАВЛЕНИЕ

ОГЛАВЛЕНИЕ	2
ХАРАКТЕРИСТИКИ	5
Основная информация	5
Размеры	5
Скорость, вместимость и масса	5
Размещение	5
Корпус и палуба	6
Информация о двигателе	6
ПОДРОБНОЕ ОПИСАНИЕ	7
COMMENTS	7
WALKTHROUGH	7
SALON	8
DINING	8
DAY HEAD	9
MAIN DECK COMPANIONWAY	9
GALLEY	9
MASTER STATEROOM	10
VIP STATEROOM FORWARD	10
GUEST VIP STATEROOM PORT	11
GUEST STATEROOM VIP STARBOARD	11
CREW QUATERS	12
CREW LOUNGE	12
PILOTHOUSE	12
ELECTRONICS & NAVIGATIONAL EQUIPMENT	13
SUN DECK	13
SKYLOUNGE	14
ELECTRICAL EQUIPMENT	14
ENGINE / MECHANICAL	15

DECK & HULL	16
UPGRADES & RECENT MAINTENANCE	16
EXCLUSIONS	17
Исключения	17
Отказ от ответственности	17
ФОТОГРАФИИ	18
Aft Deck	18
Aft Deck	18
Main Salon	18
Main Salon	18
Main Salon	18
Master Stateroom	18
Master Stateroom Vanity	19
Master Bathroom	19
VIP Stateroom	19
Guest Stateroom1	19
Guest Bathroom	19
Guest Stateroom2	19
Galley / Informal Dining	20
Galley	20
Pilothouse	20
Skyounge	20
Flybridge	20
Flybridge	20
Crew Lounge	21
Crew Accomodations	21
Captain's Quarter	21
Engine Room	21
КОНТАКТЫ	22

---

Контактная информация	22
Телефоны	22
Время работы	22
Адрес	22

# ХАРАКТЕРИСТИКИ

## Основная информация

Тип судна: Моторная яхта

Модельный год: 2005

Год постройки: 2005

Год обновления: 2014

Страна: United States

## Размеры

Длина общая: 116' 0" (35.36m)

Ширина: 23' 1" (7.04m)

Мин. осадка: 5' 6" (1.68m)

Макс. осадка: 5' 6" (1.68m)

## Скорость, вместимость и масса

Крейс. скорость: 21 Kts. (24 MPH)

Крейсерская скорость поворота: 1900 Kts.

Макс. скорость: 23 Kts. (26 MPH)

Макс. скорость поворота: 2200 Kts.

Вместимость воды: 600 Gallons

Объем топливного бака: 4000 Gallons

## Размещение

Всего кают: 4

Спальные места: 8

Всего ком. состава: 5

Каюта капитана: Да

Каюты экипажа: 2

Койки экипажа: 3

Спальных мест экипажа: 4

Комм. состав экипажа: 2

## Корпус и палуба

---

**Материал корпуса:** Fiberglass

**Комплектация корпуса:** Modified V-Hull

**Цвет корпуса:** White

**Дизайнер корпуса:** Lazara

## Информация о двигателе

---

**Двигатели:** 2

**Производитель:** MTU

**Модель:** 16V2000

**Тип двигателя:** Inboard

**Тип топлива:** Diesel

---

# ПОДРОБНОЕ ОПИСАНИЕ

---

## COMMENTS

---

- Excellent Condition
- Without doubt one of the top yachts available between 110 - 125 feet
- 4 large staterooms, huge master, 3 VIP's
- Great profile with Sky Lounge and huge outdoor Sun Deck
- Completely updated renewed A/C system
- Famous American style country kitchen
- Updated A/V 2014

There simply isn't a safer or more proven yacht available that is so beautiful and comfortable than 116' Lazzara. In absolute Top Condition, she will please most all!!

## WALKTHROUGH

---

From the Aft Deck, entering the Main Salon you are greeted by a modern yet exquisite combination of polished rich fine wood, brand new carpeting, custom fabrics, works of modern art and granites. The Aft seating area offers a sofa, love-seat, and an entertainment center with a state of art, retractable TV. The new AV system is complete with iPod control and "One Touch" electrical lighting. The AV system had a major refit and is complete with all the latest in sound and video high-end components including a Control 4 system. Additionally, there is a game table with chairs and two conversational love-seats on a mirror onyx floor. To starboard there is a serving bar which includes an ice-maker, refrigerator, wine cooler and storage for bar-ware and accessories. A cocktail party for 30 people or more can easily be served. MASTER STATEROOM Below, the Master Stateroom is full beam, freshly decorated and features everything from a TV to an entertainment center and large walk-in closet. The Master head features marble, wood and mirrors that offer you an oasis. The wood cabinets are crafted with his and hereunder-mounted sinks with marble counter tops. The over-sized glass enclosed shower and jacuzzi bath ensure relaxing experience. GUEST STATEROOMS Further down the companion way are two VIP Guest Staterooms Aft with double berths. Both staterooms include en-suite heads, hanging lockers and drawers storage, TV with DVD players and are decorated with new fabrics, stone and wood joinery. The VIP Stateroom Forward is accessed via stairwell forward in the Galley and features a Queen berth and ensuite head. This private location is ideal for additional privacy. The Pilothouse features state of the art electronics and communication systems. There are five 20" flat panel monitors for navigation, camera, television, etc. Dual SIMRAD Black Box Radars, dual GPS, and a RGM ISIS 700A System are a few of the Navtronics that set this vessel apart from others. The Skylounge can be accessed from the Pilothouse or from spiral stairs from the aft deck. This area includes a Jacuzzi hot-tub, wet bar and Miele Grill. The Aft Deck offers another great area for relaxing, dining or entertaining. This

area includes a completely equipped bar, large teak dining table with ample seating and port starboard boarding gates. There is also access to the Sun Deck, the swim platform, the transom and an on-deck doorway to the crew area and engine room. The crew area is accessed by a centerline watertight door from the transom. The crew area includes two staterooms, each with ensuite head and accommodation for three. A crew lounge with settee and table, TV, DVD player, refrigerator, microwave, and washer and dryer provide an area for relaxing and privacy.

## SALON

---

Elegance and sophistication are the theme in this spacious Salon. Rich high-gloss cherry woodwork and neutral soft colors work together for a soft inviting place to relax or entertain. The recessed lit cherry soffit over the sofa creates a focal point for conversation with guests. A wet bar starboard is a nice place to start as you prepare for games at the small table to port.

- Custom upholstered sofa and upholstered bar stools, sofa seat and foot rest (new 2014)
- Custom upholstered occasional chair (2014)
- (2) End tables
- Table lamp
- Custom African high-gloss cherry cabinetry throughout
- Samsun 3D Smart TV (2014)
- Flush mount surrounded sound speakers (5) and all new entertainment center; Blue Ray disc player (2014)
- Wet bar African cherry wood; black granite top; chrome sink; U-line ice maker; refrigerator and wine cooler; glass; glass and bottle storage
- Wood game table with leather inset and brass drink/ash tray holsters, upholstered chairs
- Custom upholstered bar chairs (2014)
- Custom Lutron Electron "One Touch" total control lighting
- Original oil painting and custom reproduction

## DINING

---

The formal dining table was removed for a more comfortable casual dining experience, this allows for further salon space. Port and Starboard cabinetry, provide added storage for any possible event or party. Casual dining space is located forward within the galley space.

- Custom wood soffit over dining area with recessed lighting
- Built-in buffets with china cabinets, port and starboard bulkhead
- Forward buffet feature radius with beveled glass door fronts, mirror backs and acrylic stemware holders
- Forward buffet has Cherry Wood top custom upholstered window valances
- Remote Controlled pleated shades
- Custom marble flooring carried through to on deck laundry room and day head



---

## DAY HEAD

---

On Deck day head Stbd

- Vanity with radius cherry wood finish marble counter-tops
- Marble flooring
- Royal Flush toilet Lutron lighting controls

---

## MAIN DECK COMPANIONWAY

---

Laundry Room

- Located forward of dining area on main deck to port
- Bosch front loading washer and dryer
- Storage
- Marble Flooring
- Wall mounted ironing board

Companionway Storage (under Pilothouse)

- Frigidaire top loading freezer
- Lutron Homeworks lighting control system (2)
- Everclear 40 gallon hot water heater
- Electrical distribution panels for Salon and Galley

---

## GALLEY

---

The Galley is located forward of the dining area and features a spacious "Country Style" design with a full upright stainless steel fridge, freezer and appliances. The settee seats four comfortably.

- U-line stainless steel fridges
- Kitchen Aid five-burner cook top stove
- Kitchen Aid convention oven
- GE profile microwave/convention oven with exhaust fan
- Stainless steel double sink with Grohe faucet and Insta-Hot Water Dispenser
- Kitchen Aid Trash Compactor
- U-line "Clear cube" ice maker
- Granite counter-tops with bull-nose
- Built-in settee with upholstered seating and granite top table

- Custom overhead soffit with lighting
- Samsung flat screen TV (retractable in overhead)
- Panasonic phone system
- Stairwell forward down to VIP Stateroom
- Brand new decor throughout

## MASTER STATEROOM

---

The Master Stateroom features high-gloss cherry woodwork with cherry soffit overhead the king size bed. Oversize portholes giving great views.

- Double door access to master suite from lower foyer Custom coordinated
- Center line king size bed storage below berth
- Custom upholstered silk headboard with mired bulkhead above headboard
- Built-in dressers (2) port and (2) starboard upholstered settee
- (2) Cherry wood two-drawer nightstand
- Cherry wood vanity desk with wood top and drawers custom vanity chair
- Full length mirror inside of walk-in closet door
- Large walk-in closet with double hanging rods and shelf organizer
- Gold plated door handles and electrical switch plates Lutron lighting
- Full size hanging closet with rod to starboard carpeting throughout
- Panasonic phone system
- 3D Smart TV, surround sound, Blue Ray disc player

## VIP STATEROOM FORWARD

---

Located in the bow and accessed from forward the galley. A very private and elegant space for those guests who want to have their privacy and features decorative high-gloss hand-carved cherry wood working and sophisticated styling.

- Accessed via a stairway from forward of the galley to starboard
- Overhead access hatchet foredeck with dark out screen
- Center-line queen berth
- Built-in night stand and upper cabinets port and starboard
- Indirect lighting under bed and bookcases
- Cedar lined hanging locker
- Bookcase with mirrored back port & starboard flush mounted halogen lighting in headliner
- Veneered cabin door
- Panasonic Phone system,
- 120V receptacle port & starboard
- Veneered door accessen private head
- Gold plated cabin door handles and switch plates

---

## GUEST VIP STATEROOM PORT

---

High-gloss cherry wood wall panel, small queen berth and en-suite head makes this a perfect place for your guests to also feel important

- Small Queen berth with custom spread, pillow shams and bedding
- Storage below berth
- Flush mounted halogen lighting in headliner Beige carpeting with Sundown insulated padding Buil-in nightsand on right side of bed
- Mirrored cedar lined hanging locker
- Custom upholstered window valances
- Remote controlled pleated shades
- Lutron lighting controls
- Entertainment Center with Samsung 30" LCD Smart TV; Marantz receiver; blue ray disc player; AM/FM stereo with glass shelving and cabinets below
- Private en-suite head with glass shower; radius wood vanity and marble countertop: mirrored medicine cabinet over vanity; Microphone toilets; Grohe gold fixtures; and marble flooring
- Panasonic phone system

---

## GUEST STATEROOM VIP STARBOARD

---

Comfortable and custom designed. This stateroom has its own private head and lots of storage space with a hanging locker and dresser drawers.

- Double berth with custom spread, shams. Storage below berth
- Built-in bight stand on left side of berth
- Custom upholstered window valances
- Entertainment center with 30" Samsung LCD Smart TV; Marantz receiver; blue ray disc player; AM/FM stereo; shelving and cabinets below
- Flush mounted halogen lighting in headliner Private en-suite head with glass stall shower; radius wood vanity and marble counter-top
- Mirrored medicine cabinet over vanity; Microphone toilets; Grohe gold fixtures; and marble flooring
- Private access to head from staterooms mirrored medicine cabinet over vanity Brass faucet, fixture, towel bar and ring linen storage cabinet
- Marble floor and vanity counter-top stall shower with gold Grohe fixtures Microphor head
- Exhaust fan
- Halogen lighting overhead with LED switches

---

## CREW QUATERS

---

### Captain Cabin

- Over sized double berth with storage below TV
- Cherry wood nightstand with two-drawer storage
- Wall mounted reading lights under overhead Cherry wood cabinets
- Mirrored Cedar-lined hanging locker Overhead storage cabinets
- En-suite head with Corian vanity top, medicine cabinet, shower stall and Grohe fixtures
- Panasonic phone systems

### Crew Cabin #2

- Lower single berth with drawer storage beneath
- Upper berth
- Overhead storage cabinets
- TV
- Cherry wood nightstand with two-drawer storage
- Mirrored Cedar lined hanging locker
- En-suite head with Corian vanity top, medicine cabinet, shower stall and Grohe fixtures
- Panasonic phone system

---

## CREW LOUNGE

---

- Upholstered settee with storage under cushions
- Cherry wood sink, cabinets and drawer storage above and below
- Scotsman under-counter refrigerator
- Sharp Microwave
- Corin countertop with stainless steel sink
- Cherry wood bookcase over settee
- State of art Samsung TV
- AM/FM stereo receiver and CD/DVD player
- Bosch washer and dryer
- Remote pull station for engine room fire suppression system
- Access to engine room via watertight door

---

## PILOTHOUSE

---

- (2) STIDD beige leather helm chairs
- One electric Bookshelves above settee
- Chart and drawer storage Teak and holly flooring overhead stereo
- (2) Speakers
- Upholstered bench settee with oval teak table storage behind and below settee

- Equipment access under stairs
- Stairs leading to Sky-lounge
- Full electronics as listed below

## ELECTRONICS & NAVIGATIONAL EQUIPMENT

---

- SIMRAD Black Box Radar with controls units
- SIMRAD autopilot control AP50
- Furuno Color LCD sounder FCV-1200L
- (2) Bosch 20" data screens
- GM ISIS 700A system with alarm monitoring
- Simrad AR78 compass display
- B&G Hydra 2000 speed/depth display B&G wind speed and direction display Jastram steering mode selector
- Furuno NavTex NX500
- Simrad ALS
- Axis P5534 PTZ Dome Network Camera on Aft Deck 2/2013
- MTU electronic engine display (Port & Stbd)
- ELBEX EXS 145 three-zone camera control
- TRAC digital stabilizer control
- American bow thruster control
- (2) SIMRAD NI 300X VHF radio x/RS87 handsets
- ICOM IC-M802 MF/HF marine
- SSB transceiver
- KVH HD7 satellite TV 8/2011
- KVH satellite phone system
- Nobeltec navigation system

## SUN DECK

---

Even though there is a sky lounge, the outside sundeck has a lounging and seating for 12-14

- (6) Teak lounge sun chairs with cushions and Sunbrella covers
- (4) Teak side tables with Sunbrella covers
- White Corian counter w/Miele electric grill & sink
- Uline Refrigerator
- 4 JL audio speakers and 1-in subwoofer
- Teak oval tables with stainless base
- Canvas cover for all seating, teak tables
- Radius settee with Sunbrella
- Jacuzzi tub with sundae cover on top
- Removable tender chocks
- Hydraulic 2500lb davit

- 15' 2006 Novurania 460 DL with 90hp Evinrude ( stored on swim platform )
- (2) life rafts
- Spiral stair with custom stainless handrails down to aft deck
- 2 large sun umbrellas offer shade

## SKYLOUNGE

---

The spacious and comfortable Skylounge is not only functional but also gives you an awesome ocean view. Accessed by a Companionway from the Pilothouse.

- Custom L-Shaped sofa
- (2) Leather Ottomans
- Cherry wood desk with drawers and storage cabinets
- Marble top bar w/chrome sink and cherry wood cabinetry and drawers underneath U-line Ice Maker and Refrigerator
- Marble cabinets featuring a retractable TV
- New desk chair
- Murantz Home Theater - custom pop-up inside Cherry wood cabinet with front storage access to the boat deck through double sliding Radius smoked glass doors
- Custom upholstered window valances
- Remote controlled pleated shades
- Panasonic phone system

## ELECTRICAL EQUIPMENT

---

- Cummins Onan 45KW generator with sound shield (Port: 4684 hrs, Stbd: 4508 hrs As of May 18th, 2016)
- SIS 700A shipboard and alarm monitoring system
- Alarms for engines, reduction gears, bilges, generators and audible/visible
- 100/240V shore power inlets (2) Aft (2) Forward UPGRADE
- Lutron Homeworks processor controlled automated scene lighting system with three-zone coverage; Main Salon, Master Stateroom/bath and exterior lighting UPGRADE
- (2) Mark VIII Dynaplate for grounding and lighting protection
- Atlas shore power system, world power classic II (50 KVA) UPGRADE
- AC/DC master control distribution panel located in engine room with secondary distribution sub-panels located throughout
- Anchor light 24V
- Batteries, heavy duty and maintenance free, four banks, 450 AMPs
- Vapor-proof battery switches bonded electrical system coded wiring system
- Engine room lights
- Interior lighting throughout the entire boat including crew quarters
- Underwater lights in transom

- (3) Navigation lights 24V- Lupolights removable towing lights - Lupolights Arch lights and bulwark lights , 24V Emergency DC lighting in each room UPGRADE 4/2013

## ENGINE / MECHANICAL

---

- Twin DDC/MTU 16V2000, 2000 HP each (Port: 3224 hrs, Stbd: 3201 hrs As of May 18th, 2016 All engine service calls are up to date
- Three-station Detroit Diesel electronic controls, combination clutches/throttles, with electronic engine synchronizes
- Detroit Diesel electronic control engine function displays
- TRAC marine AT ANCHOR hydraulic stabilizers, 11.5 sq. ft, over-sized for slow speed cruising
- Delta T systems engine room ventilation and blowers, variable speed (2@230V)
- (4) Fuel priming pump for each engine and generator
- Mufflers for engines and generators, underwater engine exhaust
- Oil changing system for engines, guards & generators, Oferdorfer pump, 120V reversible with oil quality gauge and selector valves
- Flomax bilge pumps, 3HP, 230V, 120 GDP, manifold to four bilge compartments
- Rule 24V secondary bilge pumps to evacuate each bilge
- Flomax engine driven emergency hydraulic bilge pump
- Main engine sea strainers, oversized to reduce inlet restrictions
- Oil reserve tanks, 72 gallons each with desk fills
- Bronze underwater thru-hulls and sea cocks Stainless steel cast rudders
- Aquamet 4.5 shafts
- Water filtration system
- (2) Water tanks, linear polyethylene, FDA approved
- (2) Dockside water connections with pressure reducing valves
- Flomax fire pump 5HP, 230V, with two hose connections on deck
- Fresh water outlet in engine room
- Aircraft-type stainless steel fuel lines, solid and flexible
- Oberdorfer transfer pump to transfer auxiliary fuel tank to main tank, 10 GPM
- Jastram hydraulic power-assisted steering, dual engine driven pumps to include automatic change over to manual helm backup
- American hydraulic bow thruster 50HP, 16 aperture powered PTO
- Sea Recovery SRC 2400 GDP water maker Cruiser chilled water A/C system 144,000 BTU's
- Headhunter Royal Flush marine toilet system Sea-Fire automatic and manual fire suppressions, with damper system on fans and automatic shut down system on dual to engines and generators freshwater wash down on foredeck , stern deck and flybridge
- Racor manifold fuel filters for engines and generator; Holding tanks with access for pump out (one holding tank forward holds 300 gallons, two 40 gallon tanks space port and starboard for crew heads)
- Hi-lift mufflers for generators

- Removable engine room flooring
- Basic sump box with bilge pumps and float switch for main deck, with separate high-lift pump for draining master tub and engine room sink; dual sump box pumps for crew grey water
- Compressed air outlet in engine room
- Air conditioned engine room
- Acoustical and thermal insulation in engine room

## DECK & HULL

---

- Dual Maxwell 4500 windlasses with Poole Polished stainless steel anchors
- Custom designed stainless steel cleats
- Forward bow seating with hydraulic lift lid access storage underneath
- Bulwark boarding gates, port and starboard, forward and aft
- Bomar escape hatch or oversized windows from bow VIP stateroom and all staterooms
- Boarding doors port and starboard
- Automatic anchor chain wash down system
- Aft swim deck cleats are extra reinforced for towing a large tender
- Courtesy lighting around forward bulwarks
- Stainless steel 2"bow rails with bow flagstaff
- Stainless steel ships bell
- Hand-laid uni-directional fiberglass Vinyl ester skin coat
- Awlcraft exterior
- Fiberglass reinforced stringer system
- Solid fiberglass laminate keel, chines and center line Blister-resistant gel coat below waterline
- Lower sole isolated using vibration reducing discs mounting pads for noise reduction

## UPGRADES & RECENT MAINTENANCE

---

- Atlas 50KVA power converter fully serviced
- New Aft deck ice maker
- All A/C system cleaned renewed as needed some compressors and soft starts
- Lutron lighting system, throughout
- Towing cleats on transom installed
- Fresh bottom paint
- Constant polish and hull wax
- Prop speed applied to props
- Freshly balanced props - S Class
- New carpeting on all decks
- (5) New bosh 20" monitor screens - 10/2012
- (3) iPod touch controlled system throughout



- (3) AV is run by controlled throughout
- Sea Recovery 2400 GDP water maker membranes - 5/2013
- Dual SIMRAD black box radars
- Maxwell 4500 dual anchor system Teak decks on Sun Deck
- Wireless internet throughout boat and amplified cell communication
- Direct TV receivers in all cabins
- New cutlass bearings -3/2013
- All New interior all cabins all decks 2014

## EXCLUSIONS

---

A complete list of EXCLUSIONS is available upon fully executed contract.

## Исключения

---

При продаже яхты исключаются личные вещи владельца.

## Отказ от ответственности

---

Компания предоставляет описание судна или яхты добросовестно, но не может гарантировать точность этой информации, а также не ручается за техническое состояние. Покупатель должен проинструктировать своих агентов или оценщиков исследовать представленную информацию более подробно, по собственному желанию. Продажа судна или яхты, изменение цены или снятие с продажи будет происходить без предварительного уведомления.

# ФОТОГРАФИИ

**Aft Deck**



**Aft Deck**



**Main Salon**



**Main Salon**



**Main Salon**



**Master Stateroom**



**Master Stateroom Vanity**



**Master Bathroom**



**VIP Stateroom**



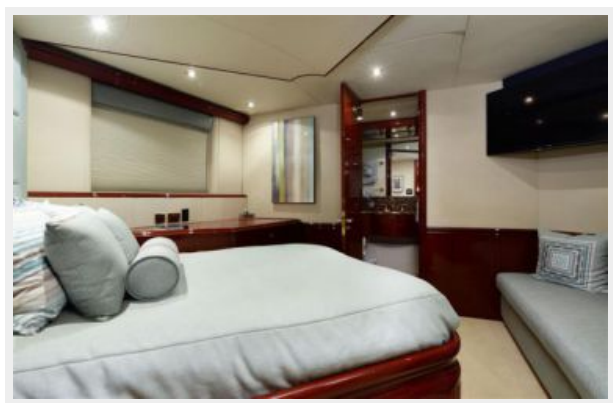
**Guest Stateroom1**



**Guest Bathroom**



**Guest Stateroom2**



**Galley**



**Galley / Informal Dining**



**Pilothouse**



**Skylounge**



**Flybridge**



**Flybridge**



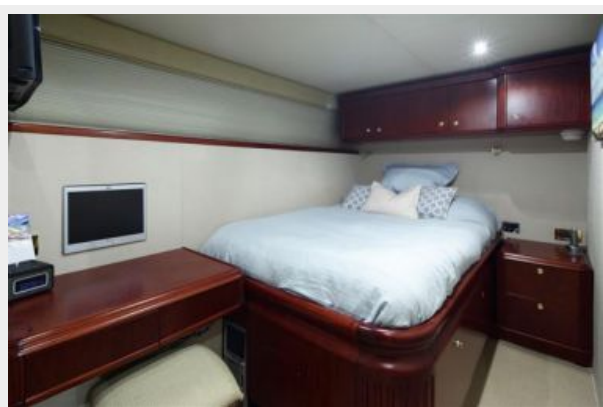
**Crew Lounge**



**Crew Accomodations**



**Captain's Quarter**



**Engine Room**



# КОНТАКТЫ

---

Андрей Шестаков (Andrey Shestakov) – ведущий яхтенный брокер отдела продаж яхт и судов компании Shestakov Yacht Sales Inc. Официальный представитель Shestakov Yacht Sales Inc. для русскоговорящих клиентов в центральном офисе компании в Майами/Форт Лодердейл/Флорида/США.

## Контактная информация

---

Email: [andrey@shestakovyachtsales.com](mailto:andrey@shestakovyachtsales.com)

Web: [shestakovyachtsales.com](http://shestakovyachtsales.com)

## Телефоны

---

Краснодарский край: **+7(918)465-66-44**

США, Майами, Флорида: **+1(954)274-4435**

## Время работы

---

Понедельник – Суббота: **9:00 - 21:00**  
EDT

Воскресенье: **Закрето**

## Адрес

---



Harbour Towne Marina, 850 NE 3rd St,  
STE 213, Dania, FL 33004