

LADISEA — ALBERTO VALLICELLI



Builder: [Alberto Vallicelli](#)

Year Built: 2009

Model: Motor Yacht

Price: PRICE ON APPLICATION

Location: Italy

LOA: 78' 2" (23.80m)

Beam: 19' 10" (6.02m)

Min Draft: 11' 7" (3.51m)

Max Draft: 11' 7" (3.51m)

Max Speed: 11 Kts. (13 MPH)

Our experienced yacht broker, Andrey Shestakov, will help you choose and buy a yacht that best suits your needs **LADISEA — Alberto Vallicelli** from our catalogue. Presently, at Shestakov Yacht Sales Inc., we have a wide variety of yachts available on our sale's list. We also work in close contact with all the big yacht manufacturers from all over the world.

If you would like to buy a yacht **LADISEA — Alberto Vallicelli** or would like help answering any questions concerning purchasing, selling or chartering a yacht, please call **+1(954)274-4435**

TABLE OF CONTENTS

TABLE OF CONTENTS	2
SPECIFICATIONS	3
Overview	3
Basic Information	3
Dimensions	3
Speed, Capacities and Weight	3
Accommodations	3
Hull and Deck Information	4
Engine Information	4
DETAILED INFORMATION	5
Accommodation	5
Additional	5
Vessel Description	5
Exclusions	5
Disclaimer	5
PHOTOS	6
CONTACTS	12
Contact details	12
Telephones	12
Office hours	12
Address	12

SPECIFICATIONS

Overview

This is a very rare opportunity to acquire a Vallicelli designed Sloop 78. Drawn by the architects at Vallicelli design in Italy and constructed in Kevlar composite by CN Yacht 2000, this sloop rigged yacht has been built to exacting standards. CN Yacht specialise in yachts from 55-80 feet and this has to be the best example. Ladisea is one of three sloop 78's and boasts a generous inventory. The carbon mast and boom keep weight low down adding to stability. The kevlar hull means this yacht is an extremely strong and powerful yacht for family cruising or competitive racing. Please contact our office for further photographs and the full build/construction specification.

Basic Information

Category: Motor Yacht

Model Year: 2009

Year Built: 2009

Country: Italy

Dimensions

LOA: 78' 2" (23.80m)

Beam: 19' 10" (6.02m)

Min Draft: 11' 7" (3.51m)

Max Draft: 11' 7" (3.51m)

Speed, Capacities and Weight

Max Speed: 11 Kts. (13 MPH)

Displacement: 55999.61917062 Pounds

Water Capacity: 528.344104 Gallons

Fuel Capacity: 528.344104 Gallons

Accommodations

Total Berths: 6

Crew Berths: 4

Hull and Deck Information

Hull Material: GRP

Hull Color: Dark Anthracite

Engine Information

Engines: 1

Manufacturer: Cummins

Model: 6BTA 5.9

Fuel Type: Diesel

DETAILED INFORMATION

Accommodation

11 berths total, 7 guests including pullman bunk, 4 crew. Sail plan: I: 30.10 J: 8.50 P: 27.60 E: 9.30 Main 160 sqm; Genoa 105% 130 sqm; Total sail area 290 sqm.

Additional

12V/24V/220V Power systems 17.5 kW Onan generator 2 x Arimar 8 person liferafts 281 sqm sail area 3.2m Hydrojet tender 9.5 kW Onan generator Bow Thruster Carbon mast and boom Carbon wheels KVH Antenna for phone KVH Antenna for TV Mastervolt charger Miele cooker Miele fridge and freezer Quick Electric windlass Raymarine 240E DSC VHF Raymarine 240E Second station Raymarine 2kW Raydome Radar Raymarine E120 Display Raymarine E80 Display Raymarine GPS125 Antenna Raymarine Lifetag system Raymarine S3 G Autopilot Corepack Raymarine ST 290 depth Raymarine ST 290 Graphic display Raymarine ST 290 Graphic wind analogue Raymarine ST 290 MOB Keypad Raymarine ST 290 Speed Raymarine ST 290 System pack Raymarine ST 290 Wind Pack Raymarine ST7002 Autopilot Watermaker

Vessel Description

This is a very rare opportunity to acquire a Vallicelli designed Sloop 78. Drawn by the architects at Vallicelli design in Italy and constructed in Kevlar composite by CN Yacht 2000, this sloop rigged yacht has been built to exacting standards. CN Yacht specialise in yachts from 55-80 feet and this has to be the best example. Ladisea is one of three sloop 78's and boasts a generous inventory. The carbon mast and boom keep weight low down adding to stability. The kevlar hull means this yacht is an extremely strong and powerful yacht for family cruising or competitive racing. Please contact our office for further photographs and the full build/construction specification.

Exclusions

Owner's personal belongings.

Disclaimer

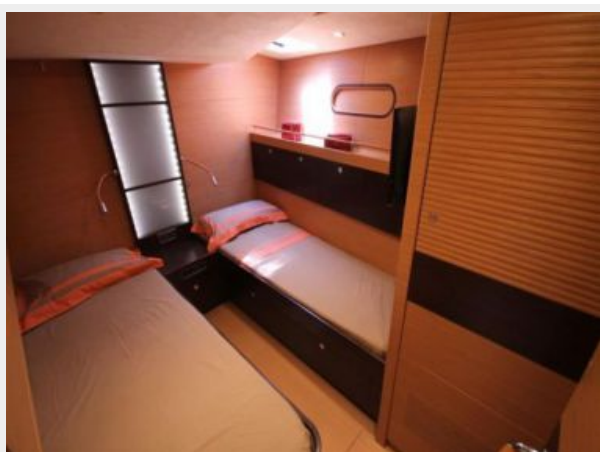
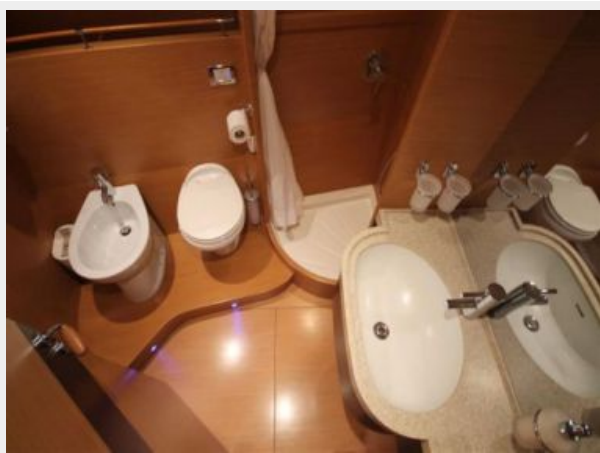
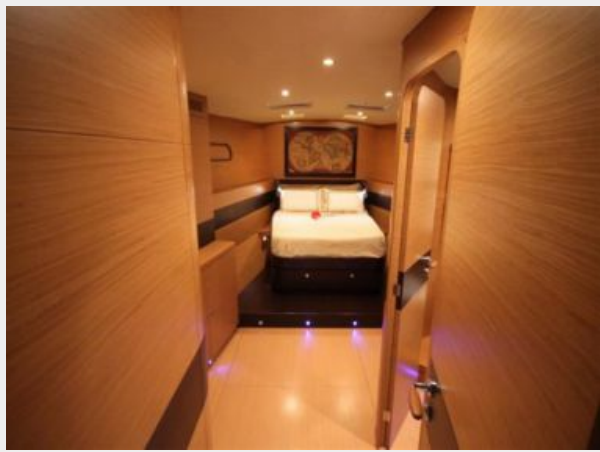
The Company offers the details of this vessel or yacht in good faith but cannot guarantee or warrant the accuracy of this information nor warrant the condition of the vessel. A buyer should instruct his representatives, agents, or his surveyors, to investigate such details as the buyer desires validated. This vessel or yacht is offered subject to prior sale, price change, or withdrawal without notice.

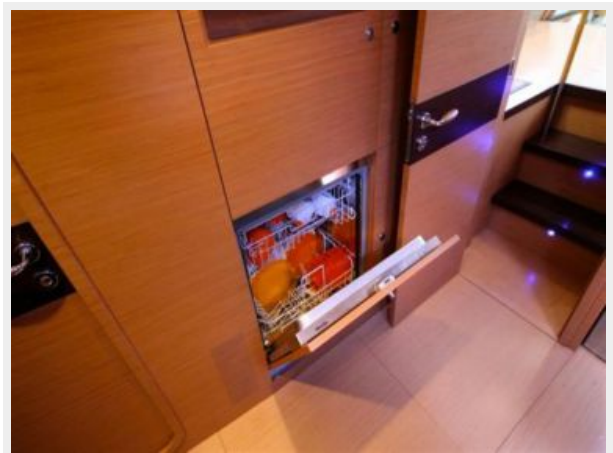
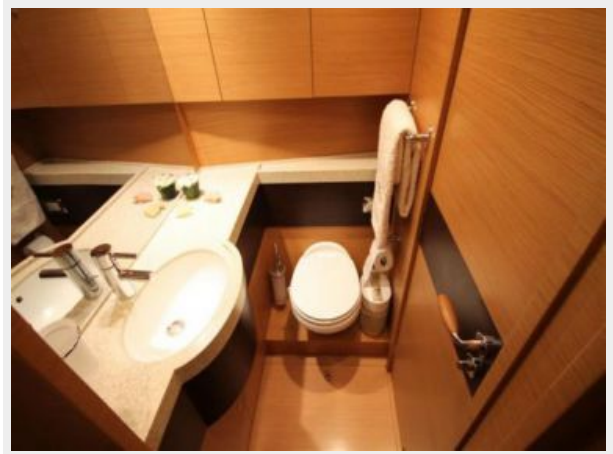
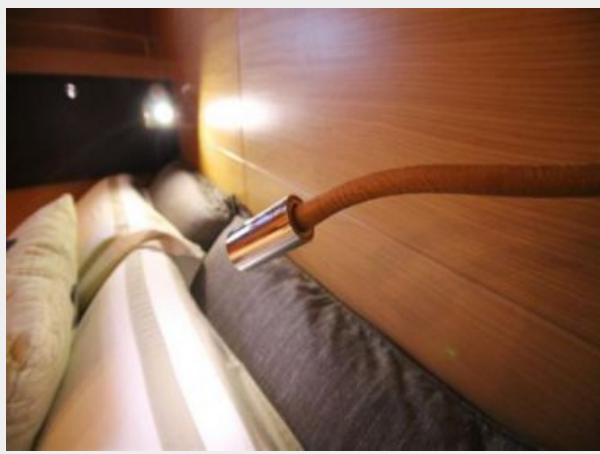
PHOTOS

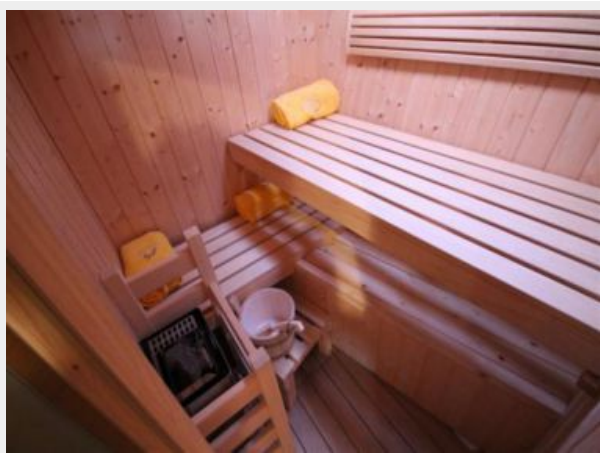












CONTACTS

Andrey Shestakov, leading yacht broker of the sales department of Shestakov Yacht Sales Inc. Shestakov Yacht Sales Inc., the official representative of the Miami/Fort Lauderdale FL headquarters.

Contact details

Email: andrey@shestakovyachtsales.com

Web: shestakovyachtsales.com/en/

Telephones

USA: +1(954)274-4435

Office hours

Monday – Saturday: **9:00 - 21:00** EDT

Sunday: **closed**

Address



Harbour Towne Marina, 850 NE 3rd St,
STE 213, Dania, FL 33004