

OPTIONS — SUNSEEKER



Builder: SUNSEEKER

Year Built: 2007

Model: Motor Yacht

Price: PRICE ON APPLICATION

Location: United Kingdom

LOA: 64' 5" (19.61m)

Beam: 16' 5" (5.00m)

Min Draft: 5' 2" (1.55m)

Max Draft: 5' 2" (1.55m)

Max Speed: 37 Kts. (43 MPH)

Our experienced yacht broker, Andrey Shestakov, will help you choose and buy a yacht that best suits your needs **OPTIONS — SUNSEEKER** from our catalogue. Presently, at Shestakov Yacht Sales Inc., we have a wide variety of yachts available on our sale's list. We also work in close contact with all the big yacht manufacturers from all over the world.

If you would like to buy a yacht **OPTIONS — SUNSEEKER** or would like help answering any questions concerning purchasing, selling or chartering a yacht, please call **+1(954)274-4435**

TABLE OF CONTENTS

TABLE OF CONTENTS	2
SPECIFICATIONS	3
Overview	3
Basic Information	3
Dimensions	3
Speed, Capacities and Weight	3
Accommodations	3
Hull and Deck Information	4
Engine Information	4
PHOTOS	5
CONTACTS	8
Contact details	8
Telephones	8
Office hours	8
Address	8

SPECIFICATIONS

Overview

This has to be the BEST example of a Sunseeker Predator 62 for sale anywhere in the World. With one experienced Sunseeker owner, "OPTIONS" is presented in immaculate condition and is currently lying in Lymington, UK. Her Mediterranean specification includes full air-conditioning, passerelle and the large 1100 hp MAN engines which benefit from full main dealer service history and offer stunning performance. From new the boat has been based in the UK and the owner has kept the gel coat in as new condition. Fitted with the crew cabin option, currently set up for storage, the Predator 62 offers, looks, performance and the ability for extended long distance cruising in comfort. Part exchanges will be considered, please contact us for more information.

Basic Information

Category: Motor Yacht

Model Year: 2007

Year Built: 2007

Country: United Kingdom

Vessel Top: Hardtop

Dimensions

LOA: 64' 5" (19.61m)

Beam: 16' 5" (5.00m)

Min Draft: 5' 2" (1.55m)

Max Draft: 5' 2" (1.55m)

Speed, Capacities and Weight

Max Speed: 37 Kts. (43 MPH)

Fuel Capacity: 792.516156 Gallons

Accommodations

Total Berths: 6

Hull and Deck Information

Hull Material: GRP

Hull Color: White with navy hull band & navy waterline stripe

Engine Information

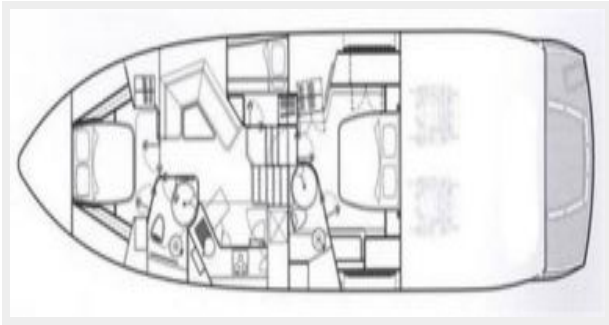
Engines: 2

Manufacturer: MAN

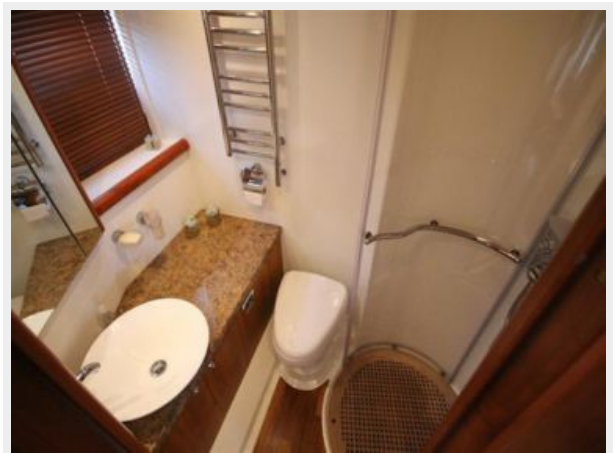
Model: V10 CRM

Fuel Type: Diesel

PHOTOS







CONTACTS

Andrey Shestakov, leading yacht broker of the sales department of Shestakov Yacht Sales Inc. Shestakov Yacht Sales Inc., the official representative of the Miami/Fort Lauderdale FL headquarters.

Contact details

Email: andrey@shestakovyachtsales.com

Web: shestakovyachtsales.com/en/

Telephones

USA: +1(954)274-4435

Office hours

Monday – Saturday: **9:00 - 21:00** EDT

Sunday: **closed**

Address



Harbour Towne Marina, 850 NE 3rd St,
STE 213, Dania, FL 33004