

SUSAN MARIE — SEAHORSE MARINE



Builder: SEAHORSE MARINE

Year Built: 2008

Model: Cruiser

Price: PRICE ON APPLICATION

Location: United States

LOA: 52' 0" (15.85m)

Beam: 15' 0" (4.57m)

Max Draft: 5' 6" (1.68m)

Our experienced yacht broker, Andrey Shestakov, will help you choose and buy a yacht that best suits your needs **Susan Marie — SEAHORSE MARINE** from our catalogue. Presently, at Shestakov Yacht Sales Inc., we have a wide variety of yachts available on our sale's list. We also work in close contact with all the big yacht manufacturers from all over the world.

If you would like to buy a yacht **Susan Marie — SEAHORSE MARINE** or would like help answering any questions concerning purchasing, selling or chartering a yacht, please call **+1(954)274-4435**

TABLE OF CONTENTS

TABLE OF CONTENTS	2
SPECIFICATIONS	3
Overview	3
Basic Information	3
Dimensions	3
Speed, Capacities and Weight	4
Accommodations	4
Hull and Deck Information	4
Engine Information	4
DETAILED INFORMATION	5
Key Features	5
Accommodations	6
Hull Construction	8
Electrical Systems	9
Sea Trial Data	9
Exclusions	10
Disclaimer	10
PHOTOS	11
CONTACTS	26
Contact details	26
Telephones	26
Office hours	26
Address	26

SPECIFICATIONS

Overview

"Susan Marie" (formerly "Dream Catcher") is an extremely well equipped Long Range Trawler. She cruises efficiently at 8 knots with a range of over 2,500 nautical miles on a tank of fuel (she is outfitted from the factory with the optional fiberglass long range tanks). The interior is designed for comfort on extended passages and is elegantly finished in teak with polished granite counter surfaces and stainless steel fixtures. Her inventory is extensive and includes: a Single John Deere main engine with less than a thousand hours, a 9kW Northern Lights generator (650hrs.), Side Power Bow and Stern Thrusters, an 8kW Isolation Transformer, Webasto Hydronic Heat, Raymarine E-Series with AIS for Navigation, ComNav auto pilot, KVH SAT TV, and a 11.5' Bullfrog Tender with 30hp Honda Outboard.

"Susan Marie" has a spacious, well-appointed salon, galley and pilothouse with two staterooms below decks; featuring a midship master stateroom with island queen berth and guest stateroom with two side bunk berths as well as office/vanity with a built in stool and settee to port. She has two generous heads with stall showers/bathtubs. Her interior joinery is exquisite with solid planked teak and holly soles throughout. Her interior soft goods have all been upgraded and the boat shows spotless.

The gourmet galley has an abundant amenities including the generous polished granite counters, a Force 10 Three Burner Stove, a Fisher Paykel Fridge/Freezer, Kenmore Elite Stainless Steel Microwave/Convection Oven, a U-Line Ice Maker and also a Splendide Washer and Dryer.

Built for efficient and safe long range cruising this boat has seen relative light use but is equipped and ready to take off tomorrow on her next journey!

Basic Information

Category: Cruiser

Model Year: 2008

Year Built: 2008

Country: United States

Dimensions

LOA: 52' 0" (15.85m)

Beam: 15' 0" (4.57m)

Max Draft: 5' 6" (1.68m)

Speed, Capacities and Weight

Displacement: 58000 Pounds

Water Capacity: 300 Gallons

Holding Tank: 45 Gallons

Fuel Capacity: 1040 Gallons

Accommodations

Total Cabins: 2

Total Heads: 2

Hull and Deck Information

Hull Material: Fiberglass

Engine Information

Engines: 1

Manufacturer: John Deere

Model: 6068TFM75

Engine Type: Inboard

Fuel Type: Diesel

DETAILED INFORMATION

Key Features

Key Features

- Single 205HP John Deere Diesel 6068TFM75 (955Hrs.)
- 9 Kw Northern Lights Genset w/ Sound Shield
- Webasto Zoned Hot Water Diesel Furnace
- Xantrex Link 2000 Inverter with Control Panel in Pilothouse
- SidePower Bow and Stern Thrusters (PH and Flybridge)
- Six 250 amp hour AGM house battery bank (4 batteries are standard)
- RayMarine E-120 12" Color LCD Integrated Radar, Plotter and Sounder
- RayMarine E-80 12" Color LCD Integrated Radar, Plotter and Sounder in Flybridge
- ComNav Auto Pilot Integrated with GPS Plotter
- 8 Kw Isolation Transformer
- Complete Systems Monitor with Alarms in Pilothouse
- Muir AA500C Electric Anchor Windlass
- AIS Transponder
- G150 50A Galvic Isolator
- Danforth Compass
- KVH Tracvision M5 Satellite TV
- 11.5' Bull Frog with 30hp Honda
- Electric Dingy Crane
- Splendide WD2100XC Washer and Dryer
- Fisher Paykel Refrigerator and Freezer (Full Size)
- Large Ice Maker
- Force 10 Three Burner Stove
- Kenmore Elite Convection Microwave Oven
- Teak and Holly Soles Throughout
- Built-in Inter-vac / Vacuum
- Sea Chest for All Seawater Intake Systems (Except Water Maker)
- Fuel Polishing System with Walbro Pump (can be used for priming and fuel transfer)
- Oil Change System for Engine, Generator and Transmission
- Hull Reinforced at Proper Location for "Flopper Stopper" Stabilizing System
- Reinforced Pads Installed for Active Fin Stabilization
- Full Flybridge Enclosure
- Remote Control Spotlight Installed w/dual Remotes with Flybridge Operation
- Open Cockpit with Sink to Port Side
- Shower Fixture on Swim Steps with Boarding Ladder
- Four Dock Lines and a Long Spring Line, 3/4" Nylon
- Heavy Duty Rub Rail on Hull with Stainless Steel Cap
- Stainless BBQ

- 60 lb Anchor 300' 5/16th " Hi-test (G-4) Chain Rode
- Rocna Model 33 Anchor (Main Anchor)
- No Color Gel coat on bottom
- Double Epoxy Seal for Blister Protection
- Quality Ainti-Fouling Paint Applied - Multiple Coats

Upgrades

- AIS-1000 Class B "Send and Receive" AIS Transponder
- E-120 12" Color LCD Integrated Radar, Plotter, and Sounder (Pilothouse)
- E-80 8" Color LCD Integrated Radar, Plotter, and Sounder (Flybridge)
- SidePower Bow and Stern Thrusters
- Splendide WD2100XC Washer and Dryer
- KVH Tracvision M5 Satellite TV System
- Samsung 32" HD LCD Flat Screen TV
- Samsung 19" HD LCD Flat Screen TV in the Pilothouse providing: HD TV Viewing, Monitor for Computer, Back up Navigation both Nobeltec VNS MaxPro and MapTech
- Sunbrella Cushions
- Stainless BBQ
- Large Ice Maker
- Two 250 Amp Hour AGM House Batteries (Six Total)
- Additional Anchor Chain for a Total of 350 ft
- 250ft 1" Nylon Anchor Rode

Accommodations

To board "Susan Marie" you step onto a wide swim platform with safety hand rails and two self bailing storage boxes to port and starboard. There is a transom door leading one step up to a generous open cockpit that has access to a large lazarette, two large deck chairs to Port and Starboard, a sink to port and a set of double diamond seaglaze water tight doors leading to the main Salon. Entering the salon and to port is a large U-shaped dinette with a gloss varnish teak table. There are four large sliding glass windows that provide plenty of natural light, an entertainment center is to starboard with a granite buffet counter, above the buffet counter is liquor cabinet/bar with three storage lockers under. Across from the dinette there are two very comfortable chairs to starboard. There are solid teak and holly cabin soles throughout the interior.

The U-shaped gourmet galley is forward to Port with polished granite counter tops with overhead cabinets with wine glass storage, double stainless steel sinks, a Force 10 three burner stove, a Convection Microwave Oven, a full size refrigerator, a large Ice Maker, overhead storage and a double wine glass rack. Just to starboard of the galley are stairs leading up to the

Pilothouse. The Pilothouse has a raised L-Shape dinette done in neutral fabric cushions and gloss varnish teak table to Port. The visibility forward from the dinette is panoramic to say the least! Forward of the dinette is black leather Todd Helm Chair and a gloss varnish teak steering wheel with chart table, drawer and storage locker underneath to port. The dash is fully equipped with RayMarine E120 Series - 12" Color Plotter, Auto Pilot, Radar and Sounder and Bow and Stern Thrusters. There are three windshield wipers and defrosters at the helm station. To starboard there is an AC/DC electrical panel aft of the shelf with bookcase access locker underneath. There are two diamond seaglaze water tight dutch doors to Port and Starboard side. Stepping out from the Port side to aft of the Pilothouse there are three steps that leads up to a large sun deck and Flybridge (full enclosure not pictured). The sun deck is protected by stainless steel rails. The Flybridge is fully equipped with electronics and has an L-shaped settee with storage lockers. Going back down to the Port side steps of the Pilothouse leading out to the foredeck there are three large storage lockers and seat over an air intake of plenum for forward cabin ventilation.

From the Pilothouse teak curved stairs lead down to a landing and two staterooms. Entering the midship master one finds a centerline walk around queen island berth with ensuite head and tub-shower to port, L-shaped office desk/vanity and bookshelf, The master also has a small settee to port and a double hanging locker with large drawer and double storage locker. A flat screen TV mounted to the forward bulkhead with double storage lockers under. A full length counter is to starboard and has drawers and storage locker underneath. There are overhead storage lockers on three sides of the master stateroom and a personal safe in an enclosed locker. Moving forward is the Guest stateroom that has two stacked side bunk beds and double lockers to starboard, an office desk with stool, bookshelves, a large settee, drawers and overhead hanging lockers to port. Stepping out from the guest stateroom to the starboard is the guest head with granite counter tops, sink, drawers and lockers along with a full sized shower.

Master Stateroom:

- Queen Island Berth
- Teak Vanity with Mirror and Bookshelf
- Large Hanging Lockers with lots of Storage
- Drawers Storage
- Ventilation and Escape Hatch

Master Head:

- Fresh Water - Electric Tecma Head
- Granite Top Vanity with Mirror
- Stainless Steel Sink
- Shower with Tub
- Towel Racks
- Teak Cabinets
- Power Ventilation
- Stainless Steel Hull Ports with Screens

Guest Stateroom:

- V- Berth Forward - Two Side Bunk Bed to Starboard
- Office/Vanity with built-in Stool to Port
- Large Hanging Lockers with lots of Storage
- Bookshelves and Drawer Storage
- Ventilation and Escape Hatch

Guest Head:

- Fresh Water - Electric Tecma Head
- Granite Top Vanity with Mirror
- Stainless Steel Sink
- Separate Shower
- Towel Racks
- Teak Cabinets
- Power Ventilation
- Stainless Steel Hull Ports with Screens

Galley:

- Fisher Paykel -Fridge/Freezer
- Daya European Double Stainless Steel Sink
- Joden Fixtures
- Force 10 - 3 Burner Stainless Steel Propane Cook top
- Kenmore Elite Stainless Steel Microwave/Convection Oven
- Granite Counter Tops
- Fireboy Xintex - S-A Propane/CNG Detector and Control System
- U-Line Ice Maker (Starboard Side)
- Splendide Washer and Dryer (Starboard Side)

Hull Construction

- Clear gelcoat to be used below the water line and the first mat layer is installed resin rich using vinylester plus two coats of Jotun "Safeguard" coal tar epoxy for blister control
- Deck lay-up includes core for stiffness and mat with double roving inside and outside laminates, overlapping and interlaced double lapping at stem and keel
- Bottom solid lay-up varies from 3/4" to 1 1/2"
- Hard roller used for proper resin/glass ratio and to minimize entrapped air
- Hull to deck joint bedded in epoxy, bolted and heavily glassed inside and outside
- Interior construction to allow easy access to hull to deck joint and stanchion bases
- Four large FRP hull stringers, UDR reinforced and built high enough to act as

saddles for sole plates

- Hull reinforced at proper location for "flopper stopper" stabilization.
- 4 1/2" reinforced pads installed for active fin stabilizing
- All interior furniture heavily glass taped to hull for additional reinforcement.

Electrical Systems

- 9 kw Northern Lights Genset with Sound Shield and Deluxe Remote Panel
- Xantrex 2000 watt Inverter with Link 2000 Control Panel
- Lightning Protection System
- Separate Heavy-Duty 24 VDC Engine and House Batteries Connected by Vapor Proof Master Switches
- Start Battery 220 AH
- 1500 AH, in 24V – 750 AH in 24V House Battery Bank
- 8 Kw Isolation Transformer for Electrolysis Protection and to Provide and Accept 120 Volt up to 50 Amp Service
- Back Lighted Custom made Circuit Breaker Panel using High Quality Breakers
- Master Breaker is GFI (RCI) Type for Safety
- 24 Volt Lighting; Quality Lighting Fixtures
- All Seahorse Marine Installed Wiring is Multi-Strand Tinned Copper Boat Cable. Colored Wiring or Marker Codes for Easy Tracing.
- AC Wiring is Sized to the More Demanding 110 Volt requirements on Boats built for 220 Volt Systems for Safety and to Maximize Resale Market

- Wire Runs in conduit and All Runs, Except the Bilge Pump, are Located as Far above the Waterline as Possible
- All Wire Runs Including those Along the Sheer are Easily Accessible
- AC Shore Connector Fitted to Starboard Side of Pilothouse
- AC Receptacle throughout Protected by GFI's
- DC Socket Installed in Pilothouse
- Copper Bonding Strip Installed the Length of the Keel to Four Zincs.
- International Navigation Lights and Anchor Light Installed
- Red Interior Night Safety Lighting and Stern Platform Courtesy Lighting Installed

- Pilothouse Overhead Lights have Red Night Vision Lighting as well as Standard White Bulbs

Sea Trial Data

Sea-Trial Data

RPM SPEED FUEL

950 4.7	0.3
1100 4.9	0.8
1200 5.6	1
1300 5.9	1.2
1400 6.4	1.6
1500 7	1.8
1600 7.3	2.2
1700 7.7	2.5
1800 8.2	3
1900 8.5	3.4
2000 8.8	4
2100 9	4.6
2200 9.3	5.4
2300 9.5	6.7
2400 9.6	7.7
2500 9.7	8.5
2650 9.9	10.4

Exclusions

Owner's personal belongings.

Disclaimer

The Company offers the details of this vessel or yacht in good faith but cannot guarantee or warrant the accuracy of this information nor warrant the condition of the vessel. A buyer should instruct his representatives, agents, or his surveyors, to investigate such details as the buyer desires validated. This vessel or yacht is offered subject to prior sale, price change, or withdrawal without notice.

PHOTOS



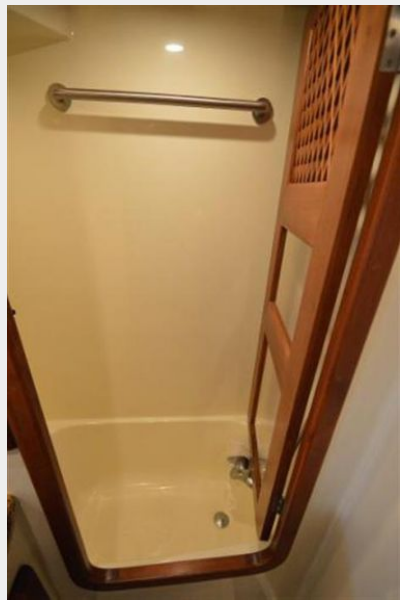






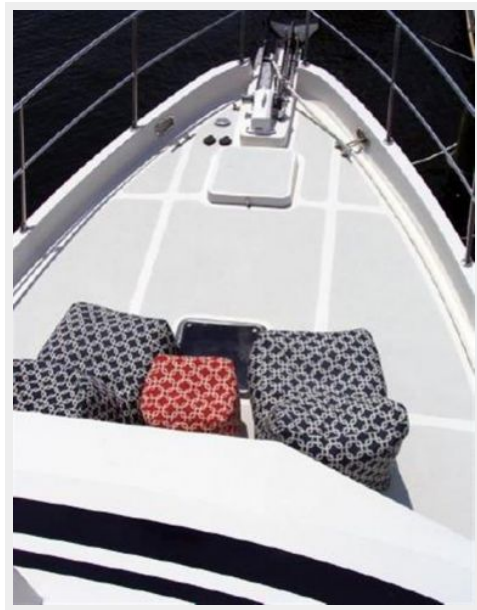


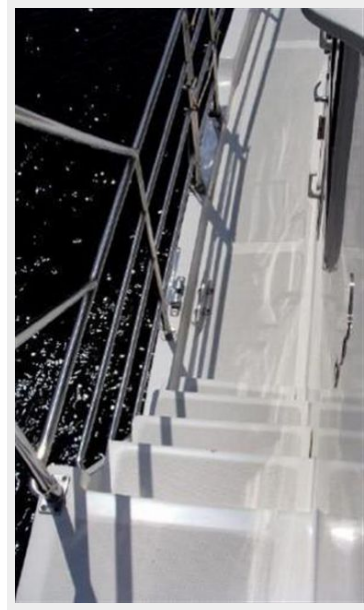


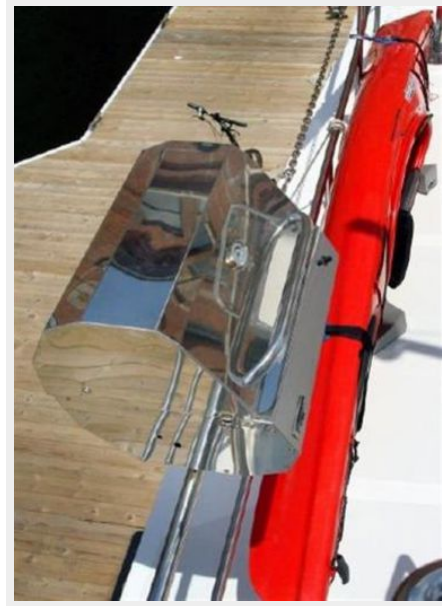


















CONTACTS

Andrey Shestakov, leading yacht broker of the sales department of Shestakov Yacht Sales Inc. Shestakov Yacht Sales Inc., the official representative of the Miami/Fort Lauderdale FL headquarters.

Contact details

Email: andrey@shestakovyachtsales.com

Web: shestakovyachtsales.com/en/

Telephones

USA: +1(954)274-4435

Office hours

Monday – Saturday: **9:00 - 21:00** EDT

Sunday: **closed**

Address



Harbour Towne Marina, 850 NE 3rd St,
STE 213, Dania, FL 33004