

AYS TRADE — VIKING SPORT CRUISERS



Builder: VIKING SPORT CRUISERS

Year Built: 2007

Model: High Performance

Price: PRICE ON APPLICATION

Location: United States

LOA: 74' 0" (22.56m)

Beam: 19' 9" (6.02m)

Max Draft: 5' 10" (1.78m)

Cruise Speed: 32 Kts. (37 MPH)

Max Speed: 37 Kts. (43 MPH)

Our experienced yacht broker, Andrey Shestakov, will help you choose and buy a yacht that best suits your needs **AYS Trade — VIKING SPORT CRUISERS** from our catalogue. Presently, at Shestakov Yacht Sales Inc., we have a wide variety of yachts available on our sale's list. We also work in close contact with all the big yacht manufacturers from all over the world.

If you would like to buy a yacht **AYS Trade — VIKING SPORT CRUISERS** or would like help answering any questions concerning purchasing, selling or chartering a yacht, please call **+1(954)274-4435**

TABLE OF CONTENTS

TABLE OF CONTENTS	2
SPECIFICATIONS	4
Overview	4
Basic Information	4
Dimensions	4
Speed, Capacities and Weight	5
Accommodations	5
Hull and Deck Information	5
Engine Information	5
DETAILED INFORMATION	6
Engine Room	6
Fly Bridge	6
Hull and Deck/Exterior	6
Messanine Cockpit	6
Galley/Dinette	7
Salon/Decor	7
Master Stateroom and Master Head	7
Forward Stateroom and Forward Head	8
Port and Starboard Staterooms and Head	8
Crew Quarters/Companionway	8
Exclusions	9
Electronics	9
Exclusions	9
Disclaimer	9
PHOTOS	10
CONTACTS	17
Contact details	17
Telephones	17

Office hours 17

Address 17

SPECIFICATIONS

Overview

The cockpit has been designed to accommodate serious blue-water anglers. The 218 square foot cockpit is outfitted with a transom door, recessed in-deck fish box, livewell and ice box. An observation mezzanine with port and starboard aft facing lounges and a refrigerated chill box is in the mezzanine step. A formidable and eye-matching machine, the Viking 74' is the most successful Viking convertible ever. Impressive and well conceived, she is the most well executed in her class. Lady G has been impeccably Captain maintained since new and with her top-shelf engineering and innovative details and design, the 74' Viking is the epitome of luxury and seagoing excellence.

Basic Information

Category: High Performance

Model Year: 2008

Year Built: 2007

Country: United States

Fly Bridge: Yes

Cockpit: Yes

Dimensions

LOA: 74' 0" (22.56m)

LWL: 66' 1" (20.14m)

Beam: 19' 9" (6.02m)

Max Draft: 5' 10" (1.78m)

Clearance: 22' 1" (6.73m)

Speed, Capacities and Weight

Cruise Speed: 32 Kts. (37 MPH)

Cruise Speed RPM: 2000 Kts.

Cruise Speed Range: 544

Max Speed: 37 Kts. (43 MPH)

Max Speed RPM: 2350 Kts.

Displacement: 135000 Pounds

Water Capacity: 385 Gallons

Holding Tank: 250 Gallons

Fuel Capacity: 3000 Gallons

Accommodations

Total Cabins: 5

Total Heads: 5

Hull and Deck Information

Hull Material: Fiberglass

Hull Color: Light Blue

Engine Information

Engines: 2

Manufacturer: MTU

Model: 16V2000M93

Engine Type: Inboard

Fuel Type: Diesel

DETAILED INFORMATION

Engine Room

Access door to Crew Quarters S & I 1400 GPD Watermaker with Auto backflush Awlgrip brass thru-hulls & sea strainers in engine room and forward bilges Fuel filters Snow White All pumps in Engine Room painted Snow White Line from Oil Change system to cockpit dockside box Dual power steering pumps Headhunter fresh water pump 110v outlet on aft bulkhead at entranceway S & I clear acrylic shaft log access covers Generator Gas-Water separators for both generators Autophase C-power shore power transformer

Fly Bridge

Electronic trolling valves Electronic single-lever controls for helm pod Recessed electronic boxes and plates TV antenna under bridge forward of a/c unit Bridge freezer box Removable flybridge jump seat backrest Push button catches for electronics boxes Dedicated forward feed for tower with labeled shutoff valve in forward flybridge locker (2) VHF Radio ICOM-604 Dedicated batteries on flybridge for electronics Smartline engine controls Release teak helm pod Switch in radiobox for electronic drop-down overhead box in hardtop Handrail on side of helm console above helm access door Drip dry foam for flybridge cushions Switches for outrigger hydraulic controls Fire system control with automatic and manual discharge and override system located at console Lounge seating to port and starboard and at forward end of helm console with covered cushions Trumpet style air horns S & I handrail on side of helm console above helm access door Drip dry foam for flybridge cushions

Hull and Deck/Exterior

Hull is Light Blue with Black bottom paint, and a metallic silver boot stripe and has underwater exhaust system. Also, Additional fuel tank forward for a total of 3 tanks. Hydraulic Bow Thruster Lewman Pacific Windlass - Capstan only Fiberglass side thru-hulls Prop pockets to reduce draft Tee in dockside water manifold to fill fresh water tank from cockpit Bow cleats fore and aft Rub rail painted to match gel coat Recessed trim tab covers Undermounted bridge side hand rails wrap 18" around front of bridge Anchor - high-tensile, corrosion resistant aluminum magnesium alloy Anchor locker with access from foredeck Anchor rode, 200' with 150' of chain

Messanine Cockpit

Dockside electric connection - 2, 50 amp/220 volt electric Glendenning Cablemasters Dockside water connection with pressure reducing valve in cabinet Engine room access hatch with additional weather tight aluminum engine room door Extended flybridge overhand for shade Grabrails at cockpit haunch Boarding box, fiberglass with nonskid, lift up top and storage

Transom swim steps at transom door and transom mounted fish box with drain Live Well in Sole Transom plumbed as live well with glass window and lights Ice Machine with discharge into cockpit sole box 2 - 24v outlets forward under coaming Awlgrip Lazarette Y-valve for fresh and salt water washdowns Transom coaming solid with fish box Misterters in cockpit overhang Storage lockers under port and starboard coamings 4 additional rod holders S & I electric grill in port locker Indirect rope lighting underneath the coaming Ladder to flybridge, one-piece, aluminum with nonskid treads Lazarette hatch with access to steering, trim tabs, and drain pumps Recessed lighting in flybridge overhang Molded in-deck storage boxes on either side of fish box Observation mezzanine with starboard aft facing lounge seating with sunbrella covered cushions, hinged seats with storage under lounge area, tackle cabinet with pull-out drawers and large bait freezers, and safety rails along aft edge Reinforced cleats Flush-mounted rod holders

Galley/Dinette

Efficiency and practicality complement the U-shaped galley with custom counter-tops, undermounted sink, premium Amtico (Worn Oak) flooring, pull out shelving and deep-drawer, undercounter, sub-zero refrigeration. Dinette couch with removable cushions and storage underneath Dinette table, teak, high-gloss finish with single teak pedestal, thru-bolted Trash Compactor and Garbage Disposal 110v outlets and lights on dimmers Stainless Sink with Chrome Faucet S & I, 4-burner, surface-mount Range with high velocity exhaust fan Microwave/Convection Oven in upper galley cabinet Maple interior cabinetry Storage cabinets in upper and lower galley with varnished teak doors, ball bearing slides for smooth movement, and latches to keep drawers in place while underway

Salon/Decor

The 50-inch plasma television rises from the hand-finished teak cabinetry via a remote control. Chilled water air conditioning flows quietly from behind the window valances. The electric salon door opens at the touch of a button and all lighting is on dimmers. For convenience, a day head is located forward of the Galley. Day Head has a Granite (Blue Pearl) Counter-top with bone sink, Custom Petra Bronze Wallpaper and Amtico Flooring (Worn Oak), with Brushed Nickel bars and rings and Satin Nickel faucet Fixed, frameless side windows with tinted, tempered glass Upgraded Bose Entertainment System Upgraded Teak Coffee Table and Valances with Hunter Douglas blinds Channel Plus System to run Salon VCR/DVD throughout boat Custom Amtico Flooring (Worn Oak) with teak trim Sofa in Ultra Leather Dove Grey and custom bars tools Wrapped hatch carpet, custom wallpaper, custom headliner (Baby Ostrich Desert Sand) and Brushed Nickel interior hardware, cover plates, switches and receptacles throughout Satin Nickel interior light trim throughout Satin finished interior teak throughout Watermaker remote control panel

Master Stateroom and Master Head

The Master Stateroom is a luxurious retreat with its king-size, walk-around bed, custom wallpaper, upholstered headboard, teak end tables and credenzas. His and her hanging lockers are maple-lined and storage is under bed. 32" flat screen television with Bose Lifestyle entertainment center Upgraded (System #1) mattress with quilted bedding Overhead and under bed lighting Desk incorporated into starboard end table The Master Head is accented with a sculpted vanity with a teak face on lower vanity, mirrored upper vanity, under-mounted bone colored sink and custom Granite counter top (Giallo Napoleon). Also: Mirrored Ceiling, Amtico (Worn Oak) Flooring and Headhunter MSD Custom, one-piece, frame less shower door with S & I Chrome Hardware and Satin Nickel faucet and fixtures, Brushed Nickel bars and rings Exhaust fan with vent in soffit

Forward Stateroom and Forward Head

An Island Queen Bunk forward layout features an upgraded orthopedic mattress which lifts on gas struts to access a stowage area. 20" flat screen television with S & I DVD player Stereo and air conditioning controls, and speakers recessed in soffit Custom Kiito Rawsilk wallpaper and quilted bedding Maple-lined hanging locker and storage cabinets port and starboard sides of bed The Forward Head has (Giallo Napoleon) Granite counter top and a bone sink, Headhunter MSD, Custom Amtico (Worn Oak) flooring, and mirrored ceiling. Also has: Sculpted vanity with a teak lower and mirrored upper face One-piece fiberglass stall shower, Satin Nickel shower fixtures and sink faucet, Brushed Nickel Bars and Rings and linen closet. Custom Nirvana Steel wallpaper Exhaust fan with vent in soffit

Port and Starboard Staterooms and Head

Convenient individual air conditioning controls, stereo and access to a private head. Lower berth lifts for extra stowage. Upper and lower berths with orthopedic mattresses with quilted bedding Custom (Sumatra Oatmeal) wallpaper S & I 15" flat screen television Locker Storage Box with teak top The Head has (Giallo Napoleon) Granite counter top and a bone sink, Headhunter MSD, Custom Amtico (Worn Oak) flooring, and mirrored ceiling. Also has: Sculpted vanity with a teak lower and mirrored upper face Chrome shower door, Satin Nickel shower fixtures and sink faucet, Brushed Nickel Bars and Rings and linen closet. Custom Lazar Bluestone wallpaper Exhaust fan with vent in soffit

Crew Quarters/Companionway

Accessed from the Companionway or Engine Room and has private head and shower stall. Also has: Custom orthopedic mattress with quilted bedding Custom (Vellera texture Mushroom) wallpaper 15" television, stereo speakers recessed in soffit Teak top storage lockers Crew head has (Giallo Napoleon) Granite counter top and a bone sink, Headhunter MSD, Custom Amtico (Worn Oak) flooring, and mirrored ceiling. Also has: Sculpted vanity with a teak lower and mirrored upper face Chrome shower door, Satin Nickel shower fixtures and sink faucet,

Brushed Nickel Bars and Rings Companionway is lined with stowage compartments behind the lush teak cabinetry. and contains a laundry center, Rod Lockers, and central vacuum system

Exclusions

Excluded in the sale of Lady G are Owner's Personal Items, Tender and all Fishing Gear

Electronics

(3) KEP Displays for all the following: Furuno GPS WAAS Navigator Furuno NavPilot Auto Pilot Furuno RD-30 Furuno Universal AIS Furuno LCD Color Sounder Furuno Radar Complete Nobeltec Navigation System (2) Garmin GPS Map 4208 (2) ICOM IC-M604 VHF

Exclusions

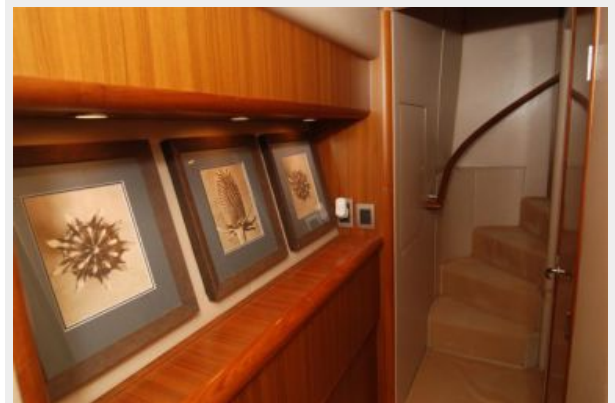
Owner's personal belongings.

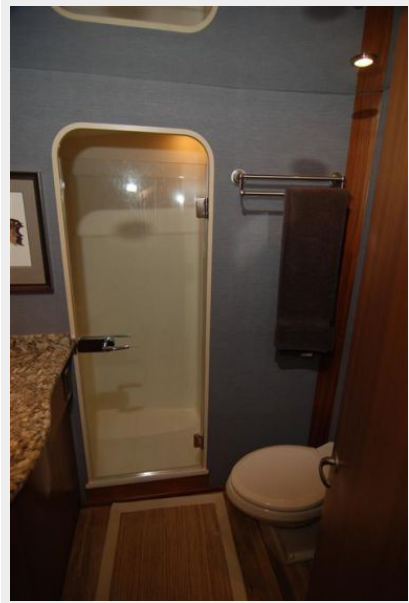
Disclaimer

The Company offers the details of this vessel or yacht in good faith but cannot guarantee or warrant the accuracy of this information nor warrant the condition of the vessel. A buyer should instruct his representatives, agents, or his surveyors, to investigate such details as the buyer desires validated. This vessel or yacht is offered subject to prior sale, price change, or withdrawal without notice.

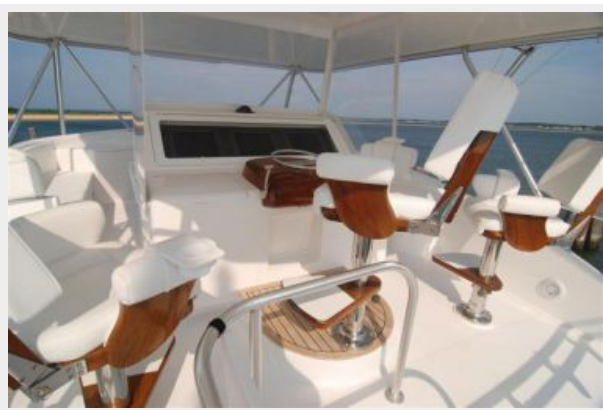
PHOTOS















CONTACTS

Andrey Shestakov, leading yacht broker of the sales department of Shestakov Yacht Sales Inc. Shestakov Yacht Sales Inc., the official representative of the Miami/Fort Lauderdale FL headquarters.

Contact details

Email: andrey@shestakovyachtsales.com

Web: shestakovyachtsales.com/en/

Telephones

USA: +1(954)274-4435

Office hours

Monday – Saturday: **9:00 - 21:00** EDT

Sunday: **closed**

Address



Harbour Towne Marina, 850 NE 3rd St,
STE 213, Dania, FL 33004