

## **AYS TRADE — VIKING SPORT CRUISERS**



**Судостроитель:**  
VIKING SPORT CRUISERS

**Год постройки:** 2007

**Модель:** Скоростной  
представительский катер

**Цена:** ЦЕНА ЯХТЫ ПО ЗАПРОСУ

**Местонахождение:** United States

**Длина общая:** 74' 0" (22.56m)

**Ширина:** 19' 9" (6.02m)

**Макс. осадка:** 5' 10" (1.78m)

**Крейс. скорость:** 32 Kts. (37 MPH)

**Макс. скорость:** 37 Kts. (43 MPH)

Купить **AYS Trade — VIKING SPORT CRUISERS** а также выбрать подходящую вам яхту из нашего каталога яхт вам поможет опытный яхтенный брокер Андрей Шестаков. На сегодняшний день компания **Shestakov Yacht Sales Inc.** имеет большое количество яхт в собственном списке продаж, а также тесно сотрудничает со всеми крупными яхтенными производителями по всему миру.

Для того чтобы купить яхту **AYS Trade — VIKING SPORT CRUISERS** а также проконсультироваться по любому вопросу связанному с покупкой, продажей, чартером яхт позвоните по телефону **+7(918)465-66-44**.

# ОГЛАВЛЕНИЕ

ОГЛАВЛЕНИЕ	2
ХАРАКТЕРИСТИКИ	4
Обзор	4
Основная информация	4
Размеры	4
Скорость, вместимость и масса	5
Размещение	5
Корпус и палуба	5
Информация о двигателе	5
ПОДРОБНОЕ ОПИСАНИЕ	6
Engine Room	6
Fly Bridge	6
Hull and Deck/Exterior	6
Messanine Cockpit	6
Galley/Dinette	7
Salon/Decor	7
Master Stateroom and Master Head	7
Forward Stateroom and Forward Head	8
Port and Starboard Staterooms and Head	8
Crew Quarters/Companionway	8
Exclusions	9
Electronics	9
Исключения	9
Отказ от ответственности	9
ФОТОГРАФИИ	10
КОНТАКТЫ	17
Контактная информация	17
Телефоны	17

---

Время работы	17
Адрес	17

---

# ХАРАКТЕРИСТИКИ

## Обзор

The cockpit has been designed to accommodate serious blue-water anglers. The 218 square foot cockpit is outfitted with a transom door, recessed in-deck fish box, livewell and ice box. An observation mezzanine with port and starboard aft facing lounges and a refrigerated chill box is in the mezzanine step. A formidable and eye-matching machine, the Viking 74' is the most successful Viking convertible ever. Impressive and well conceived, she is the most well executed in her class. Lady G has been impeccably Captain maintained since new and with her top-shelf engineering and innovative details and design, the 74' Viking is the epitome of luxury and seagoing excellence.

## Основная информация

**Тип судна:** Скоростной представительский катер

**Модельный год:** 2008

**Год постройки:** 2007

**Страна:** United States

**Открытая палуба мостика:** Да

**Кубрик:** Да

## Размеры

**Длина общая:** 74' 0" (22.56m)

**Длина по ватерлинии:** 66' 1" (20.14m)

**Ширина:** 19' 9" (6.02m)

**Макс. осадка:** 5' 10" (1.78m)

**Трапы:** 22' 1" (6.73m)

## Скорость, вместимость и масса

---

**Крейс. скорость:** 32 Kts. (37 MPH)

**Крейсерская скорость поворота:** 2000 Kts.

**Дальность на крейсерской скорости:** 544

**Макс. скорость:** 37 Kts. (43 MPH)

**Макс. скорость поворота:** 2350 Kts.

**Водоизмещение:** 135000 Pounds

**Вместимость воды:** 385 Gallons

**Вместимость сточного бака:** 250 Gallons **Объем топливного бака:** 3000 Gallons

## Размещение

---

**Всего кают:** 5

**Всего ком. состава:** 5

## Корпус и палуба

---

**Материал корпуса:** Fiberglass

**Цвет корпуса:** Light Blue

## Информация о двигателе

---

**Двигатели:** 2

**Производитель:** MTU

**Модель:** 16V2000M93

**Тип двигателя:** Inboard

**Тип топлива:** Diesel

---

# ПОДРОБНОЕ ОПИСАНИЕ

---

## Engine Room

---

Access door to Crew Quarters S & I 1400 GPD Watermaker with Auto backflush Awlgrip brass thru-hulls & sea strainers in engine room and forward bilges Fuel filters Snow White All pumps in Engine Room painted Snow White Line from Oil Change system to cockpit dockside box Dual power steering pumps Headhunter fresh water pump 110v outlet on aft bulkhead at entranceway S & I clear acrylic shaft log access covers Generator Gas-Water separators for both generators Autophase C-power shore power transformer

## Fly Bridge

---

Electronic trolling valves Electronic single-lever controls for helm pod Recessed electronic boxes and plates TV antenna under bridge forward of a/c unit Bridge freezer box Removable flybridge jump seat backrest Push button catches for electronics boxes Dedicated forward feed for tower with labeled shutoff valve in forward flybridge locker (2) VHF Radio ICOM-604 Dedicated batteries on flybridge for electronics Smartline engine controls Release teak helm pod Switch in radiobox for electronic drop-down overhead box in hardtop Handrail on side of helm console above helm access door Drip dry foam for flybridge cushions Switches for outrigger hydraulic controls Fire system control with automatic and manual discharge and override system located at console Lounge seating to port and starboard and at forward end of helm console with covered cushions Trumpet style air horns S & I handrail on side of helm console above helm access door Drip dry foam for flybridge cushions

## Hull and Deck/Exterior

---

Hull is Light Blue with Black bottom paint, and a metallic silver boot stripe and has underwater exhaust system. Also, Additional fuel tank forward for a total of 3 tanks. Hydraulic Bow Thruster Lewman Pacific Windlass - Capstan only Fiberglass side thru-hulls Prop pockets to reduce draft Tee in dockside water manifold to fill fresh water tank from cockpit Bow cleats fore and aft Rub rail painted to match gel coat Recessed trim tab covers Undermounted bridge side hand rails wrap 18" around front of bridge Anchor - high-tensile, corrosion resistant aluminum magnesium alloy Anchor locker with access from foredeck Anchor rode, 200' with 150' of chain

## Messanine Cockpit

---

Dockside electric connection - 2, 50 amp/220 volt electric Glendenning Cablemasters Dockside water connection with pressure reducing valve in cabinet Engine room access hatch with additional weather tight aluminum engine room door Extended flybridge overhand for shade Grabrails at cockpit haunch Boarding box, fiberglass with nonskid, lift up top and storage

Transom swim steps at transom door and transom mounted fish box with drain Live Well in Sole Transom plumbed as live well with glass window and lights Ice Machine with discharge into cockpit sole box 2 - 24v outlets forward under coaming Awlgrip Lazarette Y-valve for fresh and salt water washdowns Transom coaming solid with fish box Misterters in cockpit overhang Storage lockers under port and starboard coamings 4 additional rod holders S & I electric grill in port locker Indirect rope lighting underneath the coaming Ladder to flybridge, one-piece, aluminum with nonskid treads Lazarette hatch with access to steering, trim tabs, and drain pumps Recessed lighting in flybridge overhang Molded in-deck storage boxes on either side of fish box Observation mezzanine with starboard aft facing lounge seating with sunbrella covered cushions, hinged seats with storage under lounge area, tackle cabinet with pull-out drawers and large bait freezers, and safety rails along aft edge Reinforced cleats Flush-mounted rod holders

## Galley/Dinette

Efficiency and practicality complement the U-shaped galley with custom counter-tops, undermounted sink, premium Amtico (Worn Oak) flooring, pull out shelving and deep-drawer, undercounter, sub-zero refrigeration. Dinette couch with removable cushions and storage underneath Dinette table, teak, high-gloss finish with single teak pedestal, thru-bolted Trash Compactor and Garbage Disposal 110v outlets and lights on dimmers Stainless Sink with Chrome Faucet S & I, 4-burner, surface-mount Range with high velocity exhaust fan Microwave/Convection Oven in upper galley cabinet Maple interior cabinetry Storage cabinets in upper and lower galley with varnished teak doors, ball bearing slides for smooth movement, and latches to keep drawers in place while underway

## Salon/Decor

The 50-inch plasma television rises from the hand-finished teak cabinetry via a remote control. Chilled water air conditioning flows quietly from behind the window valances. The electric salon door opens at the touch of a button and all lighting is on dimmers. For convenience, a day head is located forward of the Galley. Day Head has a Granite (Blue Pearl) Counter-top with bone sink, Custom Petra Bronze Wallpaper and Amtico Flooring (Worn Oak), with Brushed Nickel bars and rings and Satin Nickel faucet Fixed, frameless side windows with tinted, tempered glass Upgraded Bose Entertainment System Upgraded Teak Coffee Table and Valances with Hunter Douglas blinds Channel Plus System to run Salon VCR/DVD throughout boat Custom Amtico Flooring (Worn Oak) with teak trim Sofa in Ultra Leather Dove Grey and custom bars tools Wrapped hatch carpet, custom wallpaper, custom headliner (Baby Ostrich Desert Sand) and Brushed Nickel interior hardware, cover plates, switches and receptacles throughout Satin Nickel interior light trim throughout Satin finished interior teak throughout Watermaker remote control panel

## Master Stateroom and Master Head

The Master Stateroom is a luxurious retreat with its king-size, walk-around bed, custom wallpaper, upholstered headboard, teak end tables and credenzas. His and her hanging lockers are maple-lined and storage is under bed. 32" flat screen television with Bose Lifestyle entertainment center Upgraded (System #1) mattress with quilted bedding Overhead and under bed lighting Desk incorporated into starboard end table The Master Head is accented with a sculpted vanity with a teak face on lower vanity, mirrored upper vanity, under-mounted bone colored sink and custom Granite counter top (Giallo Napoleon). Also: Mirrored Ceiling, Amtico (Worn Oak) Flooring and Headhunter MSD Custom, one-piece, frame less shower door with S & I Chrome Hardware and Satin Nickel faucet and fixtures, Brushed Nickel bars and rings Exhaust fan with vent in soffit

---

## Forward Stateroom and Forward Head

---

An Island Queen Bunk forward layout features an upgraded orthopedic mattress which lifts on gas struts to access a stowage area. 20" flat screen television with S & I DVD player Stereo and air conditioning controls, and speakers recessed in soffit Custom Kiito Rawsilk wallpaper and quilted bedding Maple-lined hanging locker and storage cabinets port and starboard sides of bed The Forward Head has (Giallo Napoleon) Granite counter top and a bone sink, Headhunter MSD, Custom Amtico (Worn Oak) flooring, and mirrored ceiling. Also has: Sculpted vanity with a teak lower and mirrored upper face One-piece fiberglass stall shower, Satin Nickel shower fixtures and sink faucet, Brushed Nickel Bars and Rings and linen closet. Custom Nirvana Steel wallpaper Exhaust fan with vent in soffit

---

## Port and Starboard Staterooms and Head

---

Convenient individual air conditioning controls, stereo and access to a private head. Lower berth lifts for extra stowage. Upper and lower berths with orthopedic mattresses with quilted bedding Custom (Sumatra Oatmeal) wallpaper S & I 15" flat screen television Locker Storage Box with teak top The Head has (Giallo Napoleon) Granite counter top and a bone sink, Headhunter MSD, Custom Amtico (Worn Oak) flooring, and mirrored ceiling. Also has: Sculpted vanity with a teak lower and mirrored upper face Chrome shower door, Satin Nickel shower fixtures and sink faucet, Brushed Nickel Bars and Rings and linen closet. Custom Lazar Bluestone wallpaper Exhaust fan with vent in soffit

---

## Crew Quarters/Companionway

---

Accessed from the Companionway or Engine Room and has private head and shower stall. Also has: Custom orthopedic mattress with quilted bedding Custom (Vellera texture Mushroom) wallpaper 15" television, stereo speakers recessed in soffit Teak top storage lockers Crew head has (Giallo Napoleon) Granite counter top and a bone sink, Headhunter MSD, Custom Amtico (Worn Oak) flooring, and mirrored ceiling. Also has: Sculpted vanity with a teak lower and mirrored upper face Chrome shower door, Satin Nickel shower fixtures and sink faucet,



Brushed Nickel Bars and Rings Companionway is lined with stowage compartments behind the lush teak cabinetry. and contains a laundry center, Rod Lockers, and central vacuum system

---

## Exclusions

---

Excluded in the sale of Lady G are Owner's Personal Items, Tender and all Fishing Gear

---

## Electronics

---

(3) KEP Displays for all the following: Furuno GPS WAAS Navigator Furuno NavPilot Auto Pilot Furuno RD-30 Furuno Universal AIS Furuno LCD Color Sounder Furuno Radar Complete Nobeltec Navigation System (2) Garmin GPS Map 4208 (2) ICOM IC-M604 VHF

---

## Исключения

---

При продаже яхты исключаются личные вещи владельца.

---

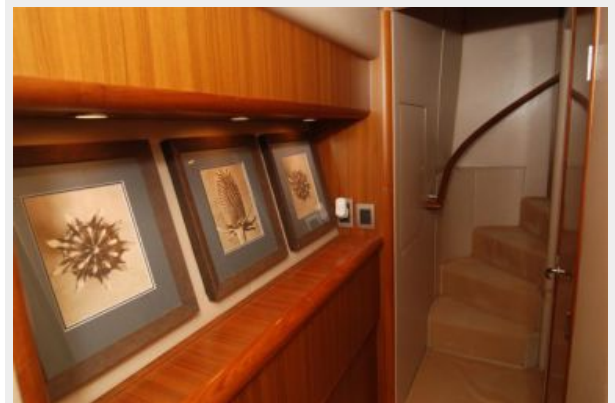
## Отказ от ответственности

---

Компания предоставляет описание судна или яхты добросовестно, но не может гарантировать точность этой информации, а также не ручается за техническое состояние. Покупатель должен проинструктировать своих агентов или оценщиков исследовать представленную информацию более подробно, по собственному желанию. Продажа судна или яхты, изменение цены или снятие с продажи будет происходить без предварительного уведомления.

# ФОТОГРАФИИ





















# КОНТАКТЫ

---

Андрей Шестаков (Andrey Shestakov) – ведущий яхтенный брокер отдела продаж яхт и судов компании Shestakov Yacht Sales Inc. Официальный представитель Shestakov Yacht Sales Inc. для русскоговорящих клиентов в центральном офисе компании в Майами/Форт Лодердейл/Флорида/США.

## Контактная информация

---

Email: [andrey@shestakovyachtsales.com](mailto:andrey@shestakovyachtsales.com)

Web: [shestakovyachtsales.com](http://shestakovyachtsales.com)

## Телефоны

---

Краснодарский край: **+7(918)465-66-44**

США, Майами, Флорида: **+1(954)274-4435**

## Время работы

---

Понедельник – Суббота: **9:00 - 21:00**  
EDT

Воскресенье: **Закрито**

## Адрес

---



Harbour Towne Marina, 850 NE 3rd St,  
STE 213, Dania, FL 33004