

BB ONE — BAIA



Builder: [BAIA](#)

Year Built: 2001

Model: Motor Yacht

Price: PRICE ON APPLICATION

Location: Italy

LOA: 48' 3" (14.70m)

Beam: 13' 7" (4.14m)

Min Draft: 3' 0" (0.90m)

Max Draft: 3' 0" (0.90m)

Our experienced yacht broker, Andrey Shestakov, will help you choose and buy a yacht that best suits your needs **BB One — BAIA** from our catalogue. Presently, at Shestakov Yacht Sales Inc., we have a wide variety of yachts available on our sale's list. We also work in close contact with all the big yacht manufacturers from all over the world.

If you would like to buy a yacht **BB One — BAIA** or would like help answering any questions concerning purchasing, selling or chartering a yacht, please call **+1(954)274-4435**

TABLE OF CONTENTS

TABLE OF CONTENTS	2
SPECIFICATIONS	3
Overview	3
Basic Information	5
Dimensions	5
Speed, Capacities and Weight	6
Accommodations	6
Hull and Deck Information	6
Engine Information	6
PHOTOS	7
CONTACTS	16
Contact details	16
Telephones	16
Office hours	16
Address	16

SPECIFICATIONS

Overview

Very good boat

On dry dock

Needs yearly maintenance

SPECIFICATION

Length:	14,70 mt
Beam:	4,14 mt
Draft:	0,90 mt
Hull Material:	Fiberglass
Fuel Capacity:	1400 lt
Water Capacity:	350 lt
Flag:	ITALY
Location:	TYRRENIAN SEA
Year:	2001

LAYOUT

Cabins:	2 + 1 CREW
Berth:	4 + 1 CREW
Toilet:	1 + 1 CREW

ENGINE

Brand:	VOLVO PENTA
Model:	TAMD 74 EDC
Power:	2 X 480 HP
Engine hours:	750
Trasmission:	SURFACE DRIVE
Fuel:	Diesel

ELETTRIC

12V - 220V - Generator 3.5 Kw Kohler

EQUIPMENT

GPS/Plotter LORENZ - Autopilot NAVICONTROL - VHF SHIPMATE

ACCESSORIES

Bow thruster - Bathing ladder - Gallery 2 fire - Bow sun cushion - Cushions - Fridge - Microwave - Underwater lights - Stereo sound system - TV n° 3 - Water pump - Gangway - CD player - Coverings - Battery charger - Fridge in cockpit - Water heater - Teak platform - Teak cockpit - Black hull - Walnut interiors.

Basic Information

Category: Motor Yacht

Model Year: 2001

Year Built: 2001

Country: Italy

Dimensions

LOA: 48' 3" (14.70m)

Beam: 13' 7" (4.14m)

Min Draft: 3' 0" (0.90m)

Max Draft: 3' 0" (0.90m)

Speed, Capacities and Weight

Water Capacity: 92.4602182 Gallons

Fuel Capacity: 369.8408728 Gallons

Accommodations

Total Cabins: 2

Total Berths: 4

Total Heads: 1

Crew Cabin: 1

Crew Berths: 1

Crew Heads: 1

Hull and Deck Information

Hull Material: Fiberglass

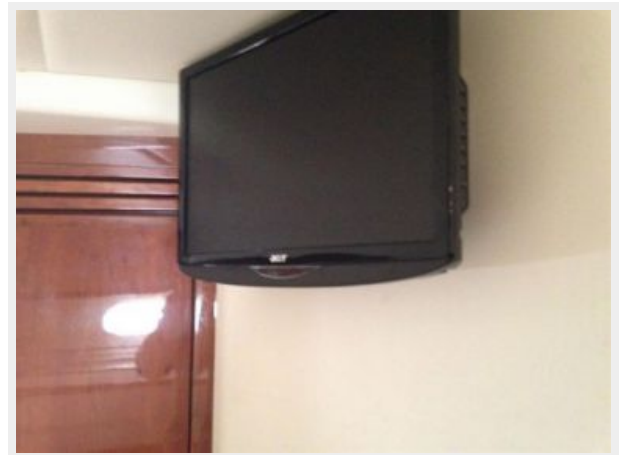
Engine Information

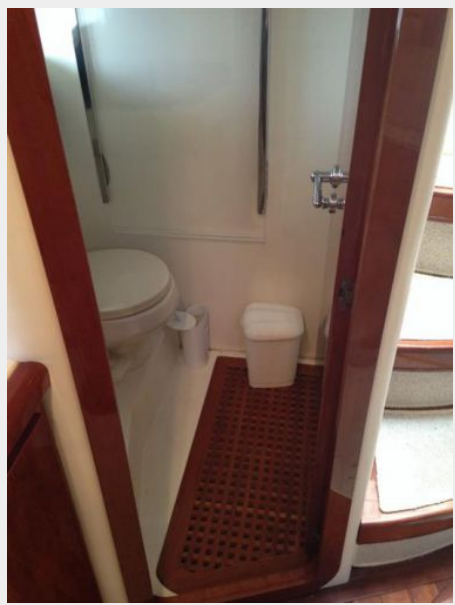
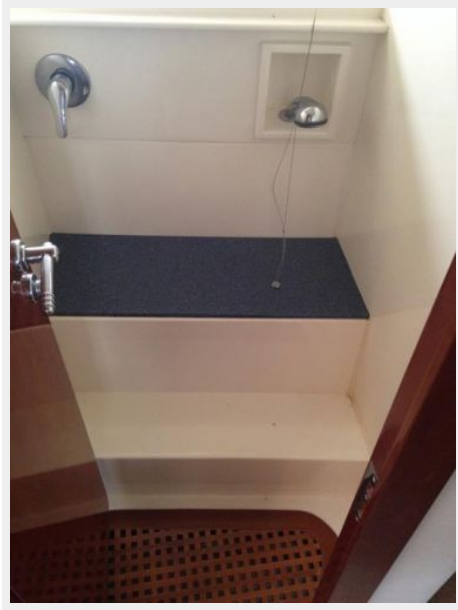
Manufacturer: Volvo Penta

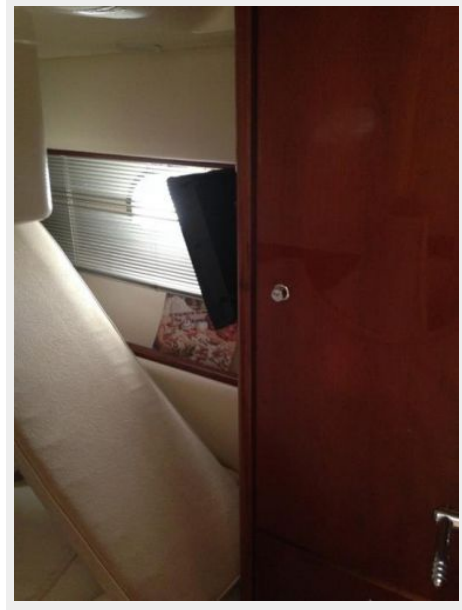
Model: TAMD 74 EDC

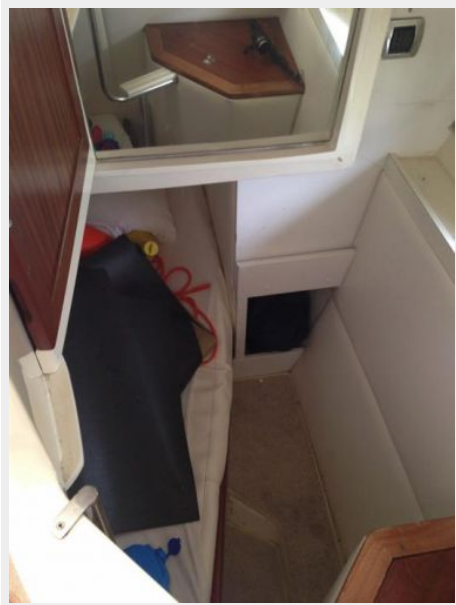
PHOTOS

















CONTACTS

Andrey Shestakov, leading yacht broker of the sales department of Shestakov Yacht Sales Inc. Shestakov Yacht Sales Inc., the official representative of the Miami/Fort Lauderdale FL headquarters.

Contact details

Email: andrey@shestakovyachtsales.com

Web: shestakovyachtsales.com/en/

Telephones

USA: +1(954)274-4435

Office hours

Monday – Saturday: **9:00 - 21:00** EDT

Sunday: **closed**

Address



Harbour Towne Marina, 850 NE 3rd St,
STE 213, Dania, FL 33004