

BLUONE — SUNSEEKER



Builder: SUNSEEKER

Year Built: 2003

Model: Motor Yacht

Price: PRICE ON APPLICATION

Location: Italy

LOA: 55' 2" (16.80m)

Beam: 15' 1" (4.59m)

Min Draft: 4' 4" (1.30m)

Max Draft: 4' 4" (1.30m)

Our experienced yacht broker, Andrey Shestakov, will help you choose and buy a yacht that best suits your needs **Bluone — SUNSEEKER** from our catalogue. Presently, at Shestakov Yacht Sales Inc., we have a wide variety of yachts available on our sale's list. We also work in close contact with all the big yacht manufacturers from all over the world.

If you would like to buy a yacht **Bluone — SUNSEEKER** or would like help answering any questions concerning purchasing, selling or chartering a yacht, please call **+1(954)274-4435**

TABLE OF CONTENTS

TABLE OF CONTENTS	2
SPECIFICATIONS	3
Overview	3
Basic Information	3
Dimensions	3
Accommodations	3
Hull and Deck Information	4
Engine Information	4
PHOTOS	5
CONTACTS	20
Contact details	20
Telephones	20
Office hours	20
Address	20

SPECIFICATIONS

Overview

Electrical Systems 12V, 220V, Air conditioning, Heating, Generator Kohler 13KW

Tools GPSPlotter Raymarine, Simrad, Raymarine radar, Simrad VHF

layout cabins 3 Sleeps 6 Bath 2 Cabins Crew 1 Sleeps crew 1 Bathrooms crew 1

accessories Bow thruster, stern thruster, Bathroom Scale, Kitchen Fires n ° 4, Bimini Top, Bow Cushion, Fridge, Freezer, Microwave, Dishwasher, Underwater lights, Stereo System, Yacht Controller, Antenna Satellite TV, No. 4, autoclave, Dial-shore water, warping, hydraulic gangway., CD Player, leather sofas, awning, black water tank, hydraulic swim platform. up / down, battery charger, Mini Fly, Faro, water heater, teak swim platform, teak side decks, Teak cockpit, Teak fly, blue hull, fly access from the living room, cable reels Glendening

Basic Information

Category: Motor Yacht

Model Year: 2003

Year Built: 2003

Country: Italy

Fly Bridge: Yes

Dimensions

LOA: 55' 2" (16.80m)

Beam: 15' 1" (4.59m)

Min Draft: 4' 4" (1.30m)

Max Draft: 4' 4" (1.30m)

Accommodations

Total Cabins: 3

Total Berths: 6

Total Heads: 2

Crew Cabin: 1

Crew Berths: 1

Crew Heads: 1

Hull and Deck Information

Hull Material: Fiberglass

Engine Information

Engines: 2

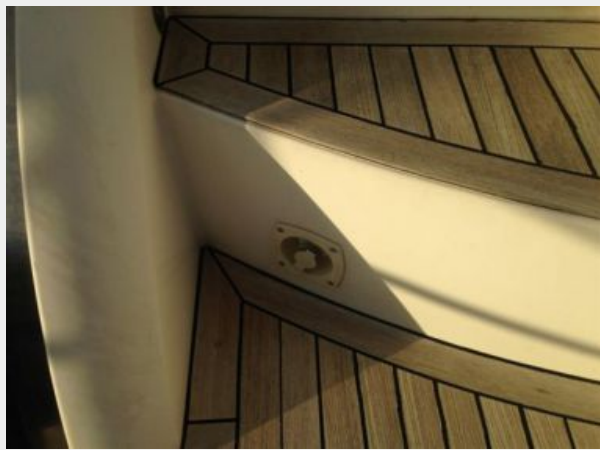
Manufacturer: Caterpillar

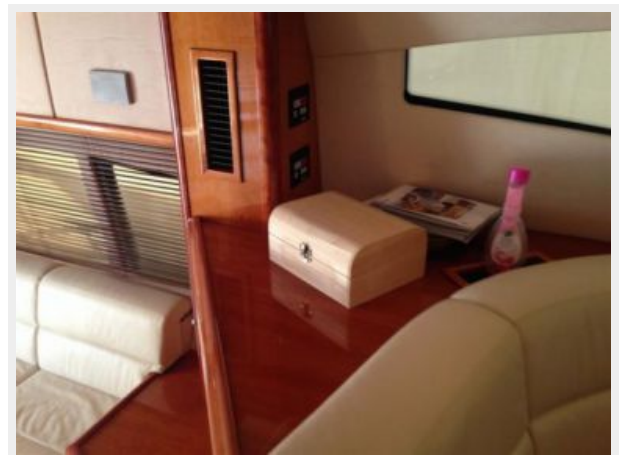
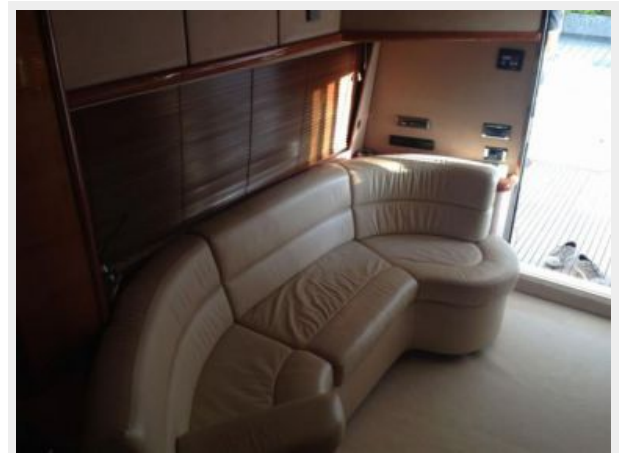
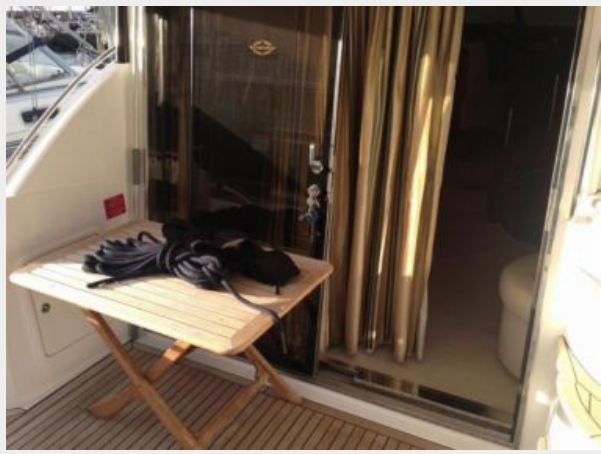
Model: 800

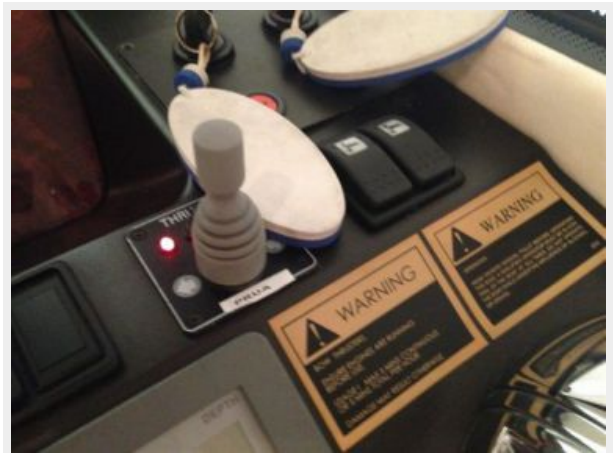
Engine Type: Inboard

Fuel Type: Diesel

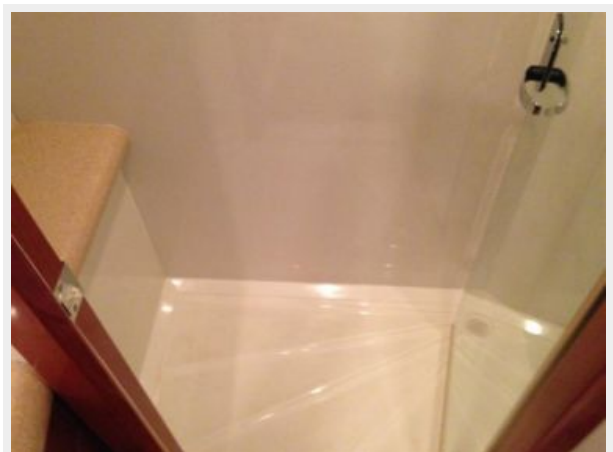
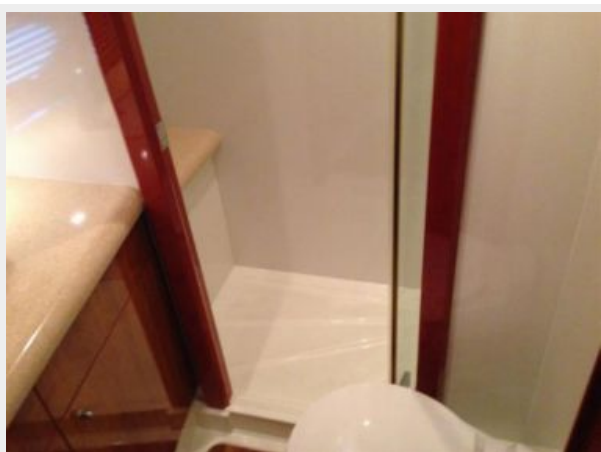
PHOTOS

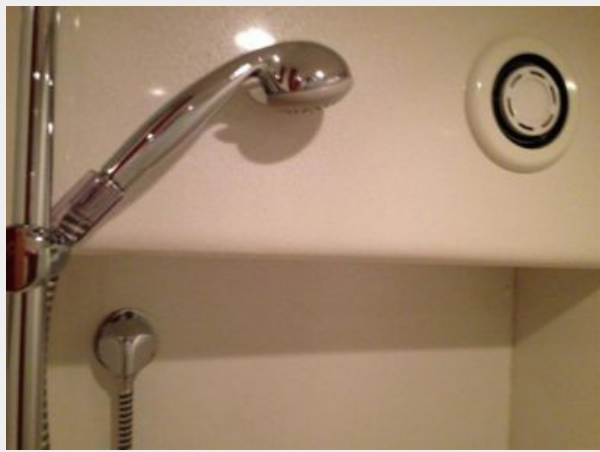


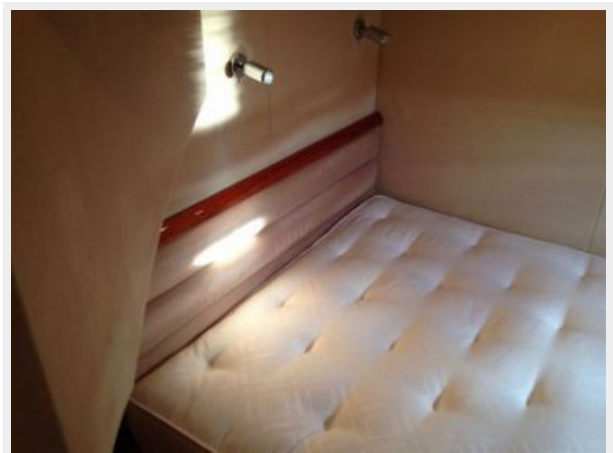
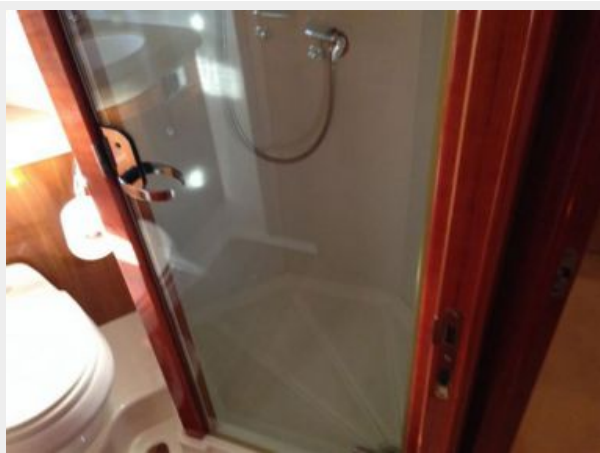


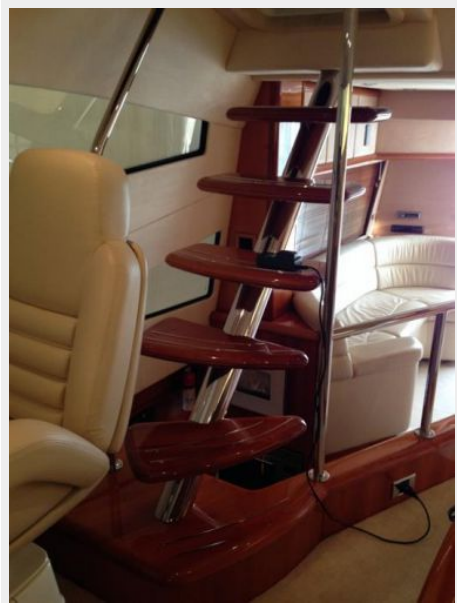
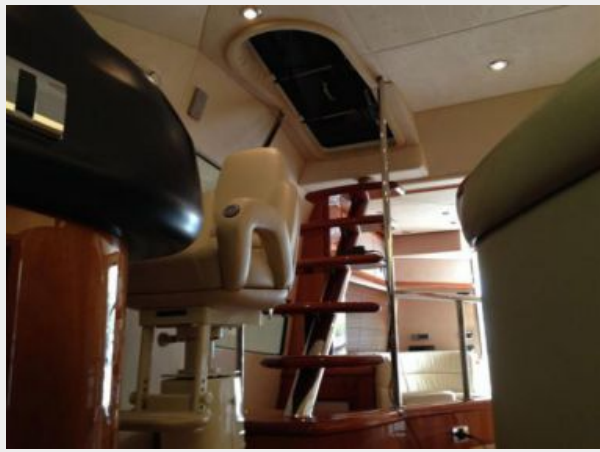
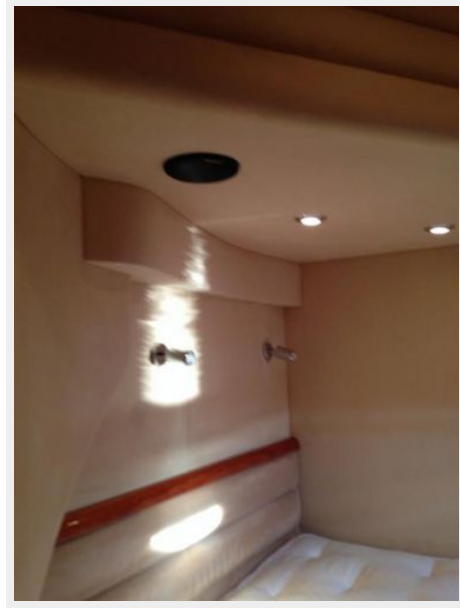
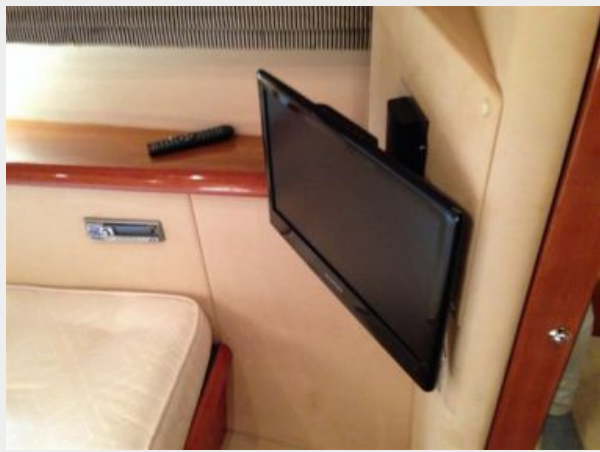


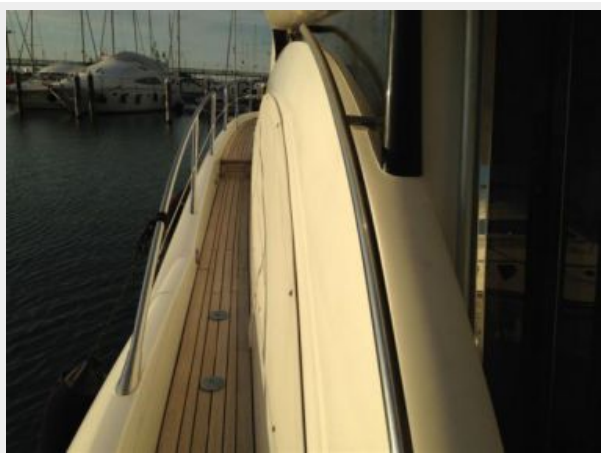
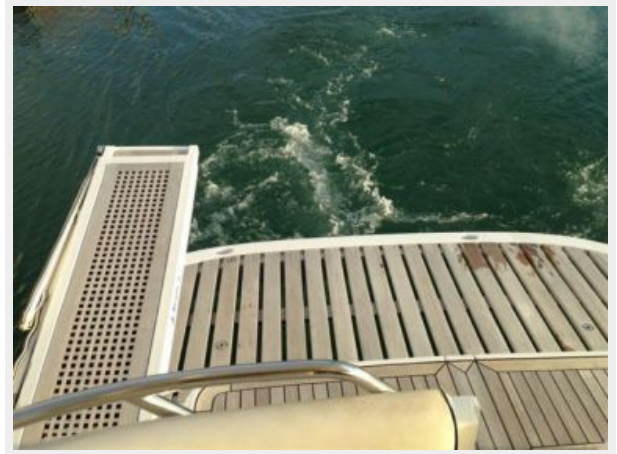


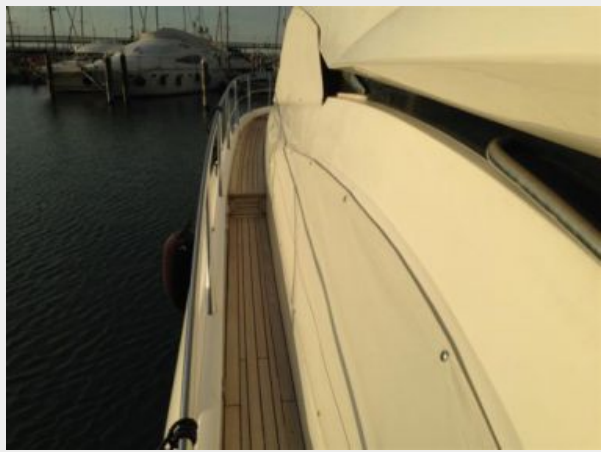


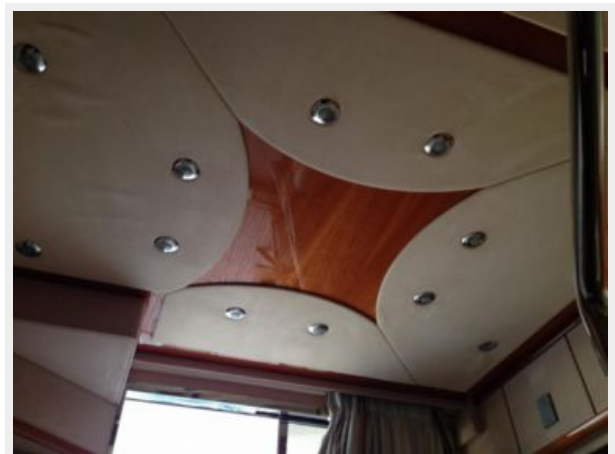
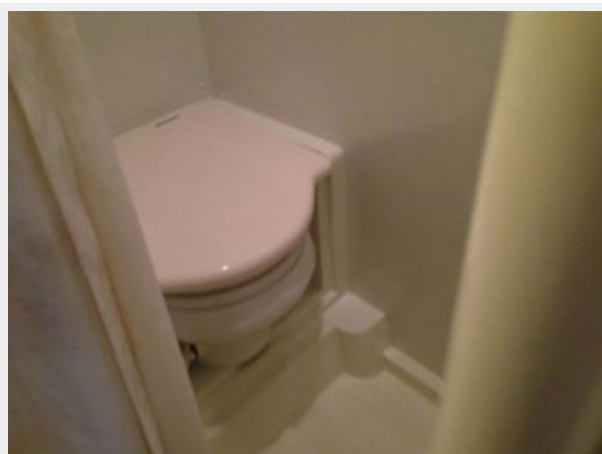
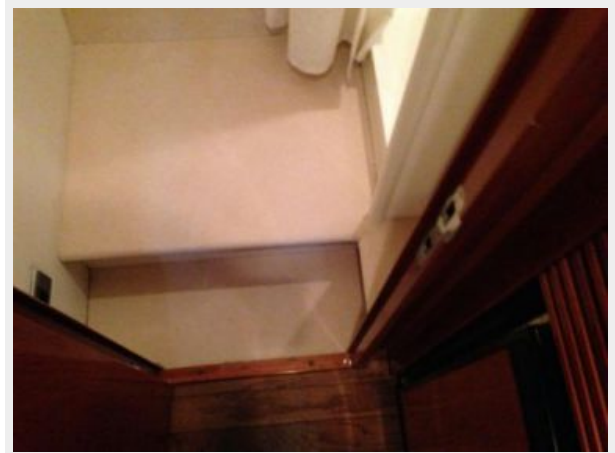
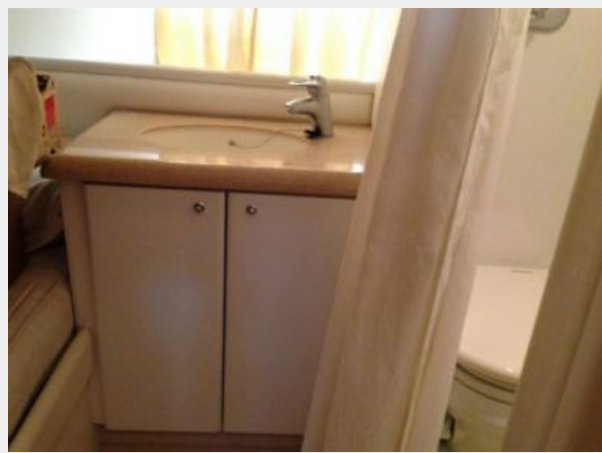




















CONTACTS

Andrey Shestakov, leading yacht broker of the sales department of Shestakov Yacht Sales Inc. Shestakov Yacht Sales Inc., the official representative of the Miami/Fort Lauderdale FL headquarters.

Contact details

Email: andrey@shestakovyachtsales.com

Web: shestakovyachtsales.com/en/

Telephones

USA: +1(954)274-4435

Office hours

Monday – Saturday: **9:00 - 21:00** EDT

Sunday: **closed**

Address



Harbour Towne Marina, 850 NE 3rd St,
STE 213, Dania, FL 33004