

LEADING FEARLESSLY — SUNSEEKER



Судостроитель: SUNSEEKER

Год постройки: 2008

Модель: Моторная яхта

Цена: **ЦЕНА ЯХТЫ ПО ЗАПРОСУ**

Местонахождение: United States

Длина общая: 91' 11" (28.02m)

Ширина: 20' 8" (6.30m)

Макс. осадка: 6' 7" (2.01m)

Крейс. скорость: 21 Kts. (24 MPH)

Макс. скорость: 28 Kts. (32 MPH)

Купить **Leading Fearlessly — SUNSEEKER** а также выбрать подходящую вам яхту из нашего каталога яхт вам поможет опытный яхтенный брокер Андрей Шестаков. На сегодняшний день компания **Shestakov Yacht Sales Inc.** имеет большое количество яхт в собственном списке продаж, а также тесно сотрудничает со всеми крупными яхтенными производителями по всему миру.

Для того чтобы купить яхту **Leading Fearlessly — SUNSEEKER** а также проконсультироваться по любому вопросу связанному с покупкой, продажей, чартером яхт позвоните по телефону **+7(918)465-66-44**.

ОГЛАВЛЕНИЕ

ОГЛАВЛЕНИЕ	2
ХАРАКТЕРИСТИКИ	4
Обзор	4
Основная информация	4
Размеры	4
Скорость, вместимость и масса	4
Размещение	4
Корпус и палуба	5
Информация о двигателе	5
ПОДРОБНОЕ ОПИСАНИЕ	6
Accommodations	6
Office/Study	6
Saloon and Dining	6
Wheelhouse	7
Fly Bridge	7
Mechanical Equipment and Engine Room	7
Deck Equipment	8
Galley	8
Navigation Systems	8
Communication System	9
Tenders and Toys	9
Security and Safety Equipment	9
Исключения	10
Отказ от ответственности	10
ФОТОГРАФИИ	11
Salon	11
Salon	11
Master Stateroom	11

VIP Stateroom	11
Twin Stateroom	11
Pilothouse	12
Helm	12
Flybridge	12
GA	12
КОНТАКТЫ	13
Контактная информация	13
Телефоны	13
Время работы	13
Адрес	13

ХАРАКТЕРИСТИКИ

Обзор

New audio and video, new Satellite antenna. Original Sunseeker decks were never brilliant so this yacht has brand new teak decks. Approximately 1500 hours on the mains and 6200 on the gens. Tropical air conditioning, shore-power converter. New tender and Jet Ski. Fabulous yacht, really well looked after!

Основная информация

Тип судна: Моторная яхта

Модельный год: 2008

Год постройки: 2008

Страна: United States

Размеры

Длина общая: 91' 11" (28.02m)

Ширина: 20' 8" (6.30m)

Макс. осадка: 6' 7" (2.01m)

Скорость, вместимость и масса

Крейс. скорость: 21 Kts. (24 MPH)

Дальность на крейсерской скорости:
400

Макс. скорость: 28 Kts. (32 MPH)

Вместимость воды: 528.344104 Gallons

Вместимость сточного бака: 264.172052
Gallons

Объем топливного бака: 2377.548468
Gallons

Размещение

Всего кают: 4

Спальные места: 8

Спальных мест экипажа: 4

Корпус и палуба

Материал корпуса: GRP

Материал палубы: Teak

Комплектация корпуса: Deep Vee

Цвет корпуса: BLACK

Дизайнер корпуса: Don Shead

Информация о двигателе

Двигатели: 2

Производитель: Caterpillar

Тип двигателя: Inboard

Тип топлива: Diesel

ПОДРОБНОЕ ОПИСАНИЕ

Accommodations

M/Y LEADING FEARLESSLY offers accommodation for up to eight guests in 2 Double cabins, and two twins. One can be arranged as a double. Master Stateroom 1 x Double berth 1 x Dressing table with mirror and low-back chair 1 x Fitness bicycle 1 x Walk-in dressing room 2 x Air conditioning 4 x Large vertical portholes with blinds each side (opening portholes) with storm shutters 2 x Telephone points (dressing table and stbd bedside table) 1 x LCD flat screen television Sharp 42" LCD TV 1 x BOSE DVD/CD/Radio. SEASOFT entertainment system with IPAD control 1 x Sensor connected to fire detection system 1 x KVH G8 Satellite system with Sky Digibox in the Main Saloon connected to all cabins 1 x ASTON Decoder connected to KVH TRACVISION M9 1 x Secondary control in Master Cabin Bar fridge in Master Cabin 1 x Safe box in dressing room Master Stateroom en suite 1 x Tecma toilet 24v with incorporated bidet hot and cold water 1 x Twin washbasins with hot and cold water 1 x Walk in shower Forward VIP stateroom 1 x Double berth 1 x Dressing table with stool 1 x Air conditioning 1 x LCD flat screen Sharp 42" LCD TV 1 x BOSE DVD/CD/Radio. SEASOFT entertainment system with IPAD control 1 x ASTON Decoder connected to KVH TRACVISION M9 2 x Telephone point (port bedside and dressing table) 1 x Sensor connected to fire detection system Forward VIP en suite 1 x Tecma toilet 24v with incorporated bidet hot and cold water 1 x Washbasin 1 x Shower compartment Port guest cabin 2 x Single berths, can be converted into a double berth 1 x Wardrobe 3 x Large vertical portholes with blinds (opening portholes) with storm shutters 1 x Air conditioning 1 x Double AC sockets 1 x LCD flat screen television (20") 1 x Sony DVD/CD player 1 x Telephone point (beside bedside table) 1 x Sensor connected to fire detection system 1 x Fire Detection System 1 x Inboard berth on sliding rail to give option of double berth 1 x Full size folding Pullman berth located athwart ships on aft bulkhead Port guest cabin en suite 1 x Tecma toilet 24v with incorporated bidet hot and cold water 1 x Washbasin 1 x Separate shower compartment Starboard Guest Cabin 2 x Single berths 1 x Full size folding pullman berth located athwart ships on aft bulkhead 1 x Wardrobe 3 x Large vertical portholes with blinds (opening portholes) with storm shutters 1 x Air conditioning 1 x LCD flat screen television (20") 1 x Sony DVD/CD player 1 x Telephone point (beside bedside table) 1 x Sensor connected to fire detection system Starboard Guest Cabin en suite 1 x Tecma toilet 24v with incorporated bidet hot and cold water 1 x Washbasin 1 x Separate shower compartment

Office/Study

Desk Computer installed All computer sockets 1 x Telephone point 1 x Sensor connected to fire detection system 1 x Air conditioning 1 x Small Safe box

Saloon and Dining

1 x Freestanding sofa to starboard with back to dining area 2 x Freestanding sofa seating in aft

saloon with scatter cushions 1 x Coffee table 1 x Dining room table for eight settings 1 x BOSE Lifestyle DVD/CD. SEASOFT entertainment system with IPAD Control 1 x CRESTRON Processor for all through boat entertainment. APPLE 8To Capacity 1 x LCD flat screen Pioneer 50" LCD TV on rise & fall 2 x Control heads for flybridge & aft deck CD/radio system 2 x Air conditioning units and 1 Air handler 1 x Bar with granite top 1 x Drinks cabinet with glassware stowage for: 12 x Champagne glasses 12 x Wine glasses 8 x Whisky goblets 1 x Decanter 1 x Day Head 1 x Stainless steel sliding patio door to aft cockpit w/ curtains & tie back 1 x Sensor connected to fire detection system 1 x ASTON Decoder connected to KVH TRACVISION M9 1 x Secondary control in Master Cabin 1 x Fire Detection System - Yacht fire detection system with sensors throughout the vessel and monitoring beside the helm position (Lloyd's approved equipment)

Wheelhouse

1 x Sofa seat 1 x Table with chart stowage 2 x Telephone points 2 x Leather Besenzoni electric helm seats

Fly Bridge

1 x Teak dining table with GRP base 1 x Upholstered sunbathing area forward 1 x Small seating area located aft of wetbar on Port side 1 x Fridge and Icemaker under bar area, grill on top 2 x Teak Chaiselounge with fitted cushions 1 x Yamaha VX Cruiser Wave Runner 1 x Besonzoni Crane for Jetski

Mechanical Equipment and Engine Room

Engines:	2 x CATERPILLAR C32 V12 Turbo charged
Engine hours:	1500 Hours as of July 23, 2015
Gearbox:	2 x TWINDISC Quickshift V-drives
Propulsion:	Shafts
Generators & Electricity:	2 x Kohler 33kva 50 Hz 240v single phase
Generator Hours:	6200Hours, as of July 23, 2015
Electricity:	24v and 12v DC electrical system 240 V - 1 single phase
Shore Power:	Glendinning Cablemaster Dockside AC sockets -1 x 63 amp A/SEA Converter 440/220V and 50/60hz
Propellers:	5-blade NAB bronze propellers
Batteries:	2 x Main engine start: Lead Acid 200 Amp

	1 x Service: Domestic Batteries 800 Amp
	2 x 4 engine batteries 24v circuit
	8 x domestic batteries 24v circuit
Generator Start:	2 x Generator batteries 12v circuit
Chargers:	2 x 95amp battery chargers for 24v circuit
	1 x 40amp battery charger for 12v circuit
Alternator:	1 x Alternator split charging system
Hydraulics:	1 x Hydraulic power steering
Stabilisers:	1 x Track Star Digital fin stabilizer system
	ZERO SPEED STABILIZER
Bow thruster:	1 x Hydraulic bow thrusters (30hp)
	1 x Hydraulic stern thruster (30hp)
Air Conditioning:	3 x Marine Air chiller CRUISAIR 9000 btu
Water Maker:	1 x Watermaker, HRO-Horizon Seafari
	170 liters per hour

Deck Equipment

1 x Bathing Platform maximum lifting capacity to 550kg 1 x Williams Jet Tender on swimming platform 1 x Bimini Top in canvas with Stainless steel frame work 1 x Fresh water deck wash with outlets forward and aft & flybridge 1 x Fresh-water filler 1 x IMCO navigation lights 1 x Remote controlled spotlight at bow 1 x Bow seat and sunbathing pad 1 x Escape hatch to foredeck from VIP Stateroom 1 x Stern Garage, storage for water softner, water toys

Galley

1 x American style fridge/freezer 1 x Bosch 12 set dishwasher AC 1 x Electric multifunction oven - Bosch HBN 580650B GB 1 x Wine cooler 1 x Hob in Galley

Navigation Systems

Compass:	2 x Manual compass
Automatic Pilot:	1 x Raymarine ST8002 with repeaters on the Flybridge, in the Wheelhouse, in the Electrical system
Echo Sounder:	1 x Raymarine ST60+ Speed and Depth in the Flybridge helm position, in the Wheelhouse, in the Electrical system
Radar:	Raymarine 4kw 48" open scanner on the flybridge
DGPS:	1 x Raystar 125 GPS Diff receiver in the Wheelhouse,

in the Electrical system

Charts: 4 x Raymarine E120 -12.1" Colour Radar plotter

Log: Paddle wheel

Monitors: 4 x Raymarine E120 -12.1" Colour display in wheelhouse
& the flybridge & in the electrical system

Underwater Lights: 10 x Aqualuma type with white LED bulb

Miscellaneous: 1 x Back up GPS Antenna

Communication System

SATCOM: 1 x KVH TRACPHONE V7

VHF: 1 x Raymarine Ray 240E Class D-DSC –
repeaters in the Flybridge, in the Wheelhouse

Loudhailer: 1 x Horn control in the Wheelhouse

Landline/Intercom: 1 x Panasonic PABX

Miscellaneous: Trim tab controls
2 x Rudder indicators

Wheelhouse 1 x Remote spotlight control
1 x Full analogue engine instrumentation
1 x Main control panel (AC/DC)
1 x Monitoring panel for fire detection system
1 x Sensor connected to fire detection system
1 x Red light lighting System

Tenders and Toys

Tenders 1 x Williams TurboJet 445 Water Sports 1 x Seadoo Spark 2up, life jackets, Masks, fins, snorkels, goggles etc. Inflatable towing toys

Security and Safety Equipment

1 x Fire Yacht fire detection system w/ sensors throughout the vessel and monitoring beside the helm position (Lloyd's approved equipment) 1 x CCTV System linked into E120 series with: 2 x Cameras (aft deck/engine room viewed from Flybridge & Wheelhouse Raymarine E120 monitor interface Engine room/Electrical system) 1 x Automatic bilge pump (in each watertight compartment) 1 x Automatic flood pump (in each watertight compartment) Automatic fire extinguisher with engine/generator and fan shutdown Manual bilge pump Sensors connected to fire detection system 1 x AC 240v fresh-water pump 1 x DC 24v backup fresh-water pump 1 x Hot

water circulating pump 1 x Grey Water Tank with WAVE BRITE filtration system. OMI. MARPOL D4

Исключения

При продаже яхты исключаются личные вещи владельца.

Отказ от ответственности

Компания предоставляет описание судна или яхты добросовестно, но не может гарантировать точность этой информации, а также не ручается за техническое состояние. Покупатель должен проинструктировать своих агентов или оценщиков исследовать представленную информацию более подробно, по собственному желанию. Продажа судна или яхты, изменение цены или снятие с продажи будет происходить без предварительного уведомления.

ФОТОГРАФИИ

Salon



Salon



Master Stateroom



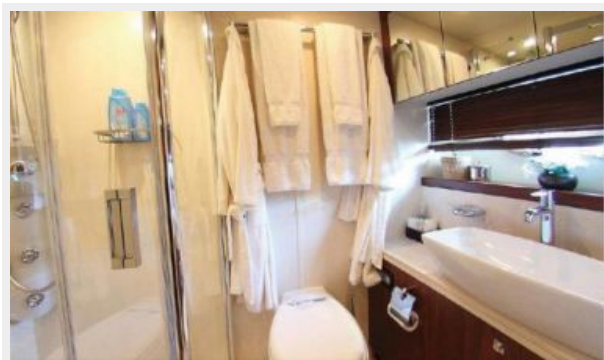
VIP Stateroom



Twin Stateroom



Pilothouse



Helm



Flybridge



GA



КОНТАКТЫ

Андрей Шестаков (Andrey Shestakov) – ведущий яхтенный брокер отдела продаж яхт и судов компании Shestakov Yacht Sales Inc. Официальный представитель Shestakov Yacht Sales Inc. для русскоговорящих клиентов в центральном офисе компании в Майами/Форт Лодердейл/Флорида/США.

Контактная информация

Email: andrey@shestakovyachtsales.com

Web: shestakovyachtsales.com

Телефоны

Краснодарский край: **+7(918)465-66-44**

США, Майами, Флорида: **+1(954)274-4435**

Время работы

Понедельник – Суббота: **9:00 - 21:00**
EDT

Воскресенье: **Закрыто**

Адрес



Harbour Towne Marina, 850 NE 3rd St,
STE 213, Dania, FL 33004