

ETIENNE — AZIMUT



Судостроитель: [AZIMUT](#)

Год постройки: 2014

Модель: Моторная яхта

Цена: **ЦЕНА ЯХТЫ ПО ЗАПРОСУ**

Местонахождение: Italy

Длина общая: 42' 7" (12.96m)

Ширина: 14' 6" (4.40m)

Мин. осадка: 4' 4" (1.30m)

Макс. осадка: 4' 4" (1.30m)

Купить **ETIENNE — AZIMUT** а также выбрать подходящую вам яхту из нашего каталога яхт вам поможет опытный яхтенный брокер Андрей Шестаков. На сегодняшний день компания **Shestakov Yacht Sales Inc.** имеет большое количество яхт в собственном списке продаж, а также тесно сотрудничает со всеми крупными яхтенными производителями по всему миру.

Для того чтобы купить яхту **ETIENNE — AZIMUT** а также проконсультироваться по любому вопросу связанному с покупкой, продажей, чартером яхт позвоните по телефону **+7(918)465-66-44**.

ОГЛАВЛЕНИЕ

ОГЛАВЛЕНИЕ	2
ХАРАКТЕРИСТИКИ	3
Обзор	3
Основная информация	11
Размеры	11
Скорость, вместимость и масса	11
Размещение	12
Корпус и палуба	12
Информация о двигателе	12
ФОТОГРАФИИ	13
КОНТАКТЫ	21
Контактная информация	21
Телефоны	21
Время работы	21
Адрес	21

ХАРАКТЕРИСТИКИ

Обзор

Brand new boat

Enjoyed by the owner one season as long as the current one.

```
<table class="MsoTableGrid" border="1" cellspacing="0" cellpadding="0" style="border-collapse:collapse;border:none;mso-border-alt:solid windowtext .5pt; mso-yfti-tbllook:1 184;mso-padding-alt:0cm 5.4pt 0cm 5.4pt"> <td width="652" colspan="2" valign="top" style="width:488.9pt;border:solid windowtext 1.0pt; mso-border-alt:solid windowtext .5pt;background:#F2F2F2;mso-background-themecolor: background1;mso-background-themeshade:242;padding:0cm 5.4pt 0cm 5.4pt">
```

SPECIFICATION

```
<td width="326" valign="top" style="width:244.45pt;border:solid windowtext 1.0pt; border-top:none;mso-border-top-alt:solid windowtext .5pt;mso-border-alt:solid windowtext .5pt; padding:0cm 5.4pt 0cm 5.4pt">
```

Length:

```
<td width="326" valign="top" style="width:244.45pt;border-top:none;border-left: none;border-bottom:solid windowtext 1.0pt;border-right:solid windowtext 1.0pt; mso-border-top-alt:solid windowtext .5pt;mso-border-left-alt:solid windowtext .5pt; mso-border-alt:solid windowtext .5pt;padding:0cm 5.4pt 0cm 5.4pt">
```

12,96 mt

```
<td width="326" valign="top" style="width:244.45pt;border:solid windowtext 1.0pt; border-top:none;mso-border-top-alt:solid windowtext .5pt;mso-border-alt:solid windowtext .5pt; padding:0cm 5.4pt 0cm 5.4pt">
```

Beam:

```
<td width="326" valign="top" style="width:244.45pt;border-top:none;border-left: none;border-bottom:solid windowtext 1.0pt;border-right:solid windowtext 1.0pt; mso-border-top-alt:solid windowtext .5pt;mso-border-left-alt:solid windowtext .5pt; mso-border-alt:solid windowtext .5pt;padding:0cm 5.4pt 0cm 5.4pt">
```

4,40 mt

```
<td width="326" valign="top" style="width:244.45pt;border:solid windowtext 1.0pt; border-
```

top:none;mso-border-top-alt:solid windowtext .5pt;mso-border-alt:solid windowtext .5pt;
padding:0cm 5.4pt 0cm 5.4pt">

Draft:

<td width="326" valign="top" style="width:244.45pt;border-top:none;border-left: none;border-bottom:solid windowtext 1.0pt;border-right:solid windowtext 1.0pt; mso-border-top-alt:solid windowtext .5pt;mso-border-left-alt:solid windowtext .5pt; mso-border-alt:solid windowtext .5pt;padding:0cm 5.4pt 0cm 5.4pt">

1,30 mt

<td width="326" valign="top" style="width:244.45pt;border:solid windowtext 1.0pt; border-top:none;mso-border-top-alt:solid windowtext .5pt;mso-border-alt:solid windowtext .5pt; padding:0cm 5.4pt 0cm 5.4pt">

Hull Material:

<td width="326" valign="top" style="width:244.45pt;border-top:none;border-left: none;border-bottom:solid windowtext 1.0pt;border-right:solid windowtext 1.0pt; mso-border-top-alt:solid windowtext .5pt;mso-border-left-alt:solid windowtext .5pt; mso-border-alt:solid windowtext .5pt;padding:0cm 5.4pt 0cm 5.4pt">

Fiberglass

<td width="326" valign="top" style="width:244.45pt;border:solid windowtext 1.0pt; border-top:none;mso-border-top-alt:solid windowtext .5pt;mso-border-alt:solid windowtext .5pt; padding:0cm 5.4pt 0cm 5.4pt">

Fuel Capacity:

<td width="326" valign="top" style="width:244.45pt;border-top:none;border-left: none;border-bottom:solid windowtext 1.0pt;border-right:solid windowtext 1.0pt; mso-border-top-alt:solid windowtext .5pt;mso-border-left-alt:solid windowtext .5pt; mso-border-alt:solid windowtext .5pt;padding:0cm 5.4pt 0cm 5.4pt">

1680 lt

<td width="326" valign="top" style="width:244.45pt;border:solid windowtext 1.0pt; border-top:none;mso-border-top-alt:solid windowtext .5pt;mso-border-alt:solid windowtext .5pt; padding:0cm 5.4pt 0cm 5.4pt">

Water Capacity:

<td width="326" valign="top" style="width:244.45pt;border-top:none;border-left: none;border-bottom:solid windowtext 1.0pt;border-right:solid windowtext 1.0pt; mso-border-top-alt:solid windowtext .5pt;mso-border-left-alt:solid windowtext .5pt; mso-border-alt:solid windowtext .5pt;padding:0cm 5.4pt 0cm 5.4pt">

600 lt

```
<td width="326" valign="top" style="width:244.45pt;border:solid windowtext 1.0pt; border-top:none;mso-border-top-alt:solid windowtext .5pt;mso-border-alt:solid windowtext .5pt; padding:0cm 5.4pt 0cm 5.4pt">
```

Flag:

```
<td width="326" valign="top" style="width:244.45pt;border-top:none;border-left: none;border-bottom:solid windowtext 1.0pt;border-right:solid windowtext 1.0pt; mso-border-top-alt:solid windowtext .5pt;mso-border-left-alt:solid windowtext .5pt; mso-border-alt:solid windowtext .5pt;padding:0cm 5.4pt 0cm 5.4pt">
```

ITALY

```
<td width="326" valign="top" style="width:244.45pt;border:solid windowtext 1.0pt; border-top:none;mso-border-top-alt:solid windowtext .5pt;mso-border-alt:solid windowtext .5pt; padding:0cm 5.4pt 0cm 5.4pt">
```

Location:

```
<td width="326" valign="top" style="width:244.45pt;border-top:none;border-left: none;border-bottom:solid windowtext 1.0pt;border-right:solid windowtext 1.0pt; mso-border-top-alt:solid windowtext .5pt;mso-border-left-alt:solid windowtext .5pt; mso-border-alt:solid windowtext .5pt;padding:0cm 5.4pt 0cm 5.4pt">
```

TYRRENIAN SEA

```
<td width="326" valign="top" style="width:244.45pt;border:solid windowtext 1.0pt; border-top:none;mso-border-top-alt:solid windowtext .5pt;mso-border-alt:solid windowtext .5pt; padding:0cm 5.4pt 0cm 5.4pt">
```

Year:

```
<td width="326" valign="top" style="width:244.45pt;border-top:none;border-left: none;border-bottom:solid windowtext 1.0pt;border-right:solid windowtext 1.0pt; mso-border-top-alt:solid windowtext .5pt;mso-border-left-alt:solid windowtext .5pt; mso-border-alt:solid windowtext .5pt;padding:0cm 5.4pt 0cm 5.4pt">
```

2014

```
<td width="326" valign="top" style="width:244.45pt;border:solid windowtext 1.0pt; border-top:none;mso-border-top-alt:solid windowtext .5pt;mso-border-alt:solid windowtext .5pt; padding:0cm 5.4pt 0cm 5.4pt">
```

```
<td width="326" valign="top" style="width:244.45pt;border-top:none;border-left: none;border-
```

bottom:solid windowtext 1.0pt;border-right:solid windowtext 1.0pt; mso-border-top-alt:solid windowtext .5pt;mso-border-left-alt:solid windowtext .5pt; mso-border-alt:solid windowtext .5pt;padding:0cm 5.4pt 0cm 5.4pt">

<td width="326" valign="top" style="width:244.45pt;border:solid windowtext 1.0pt; border-top:none;mso-border-top-alt:solid windowtext .5pt;mso-border-alt:solid windowtext .5pt; padding:0cm 5.4pt 0cm 5.4pt">

<td width="326" valign="top" style="width:244.45pt;border-top:none;border-left: none;border-bottom:solid windowtext 1.0pt;border-right:solid windowtext 1.0pt; mso-border-top-alt:solid windowtext .5pt;mso-border-left-alt:solid windowtext .5pt; mso-border-alt:solid windowtext .5pt;padding:0cm 5.4pt 0cm 5.4pt">

<td width="652" colspan="2" valign="top" style="width:488.9pt;border:solid windowtext 1.0pt; border-top:none;mso-border-top-alt:solid windowtext .5pt;mso-border-alt:solid windowtext .5pt; background:#F2F2F2;mso-background-themecolor:background1 ;mso-background-theseshade: 242;padding:0cm 5.4pt 0cm 5.4pt">

LAYOUT

<td width="326" valign="top" style="width:244.45pt;border:solid windowtext 1.0pt; border-top:none;mso-border-top-alt:solid windowtext .5pt;mso-border-alt:solid windowtext .5pt; padding:0cm 5.4pt 0cm 5.4pt">

Cabins:

<td width="326" valign="top" style="width:244.45pt;border-top:none;border-left: none;border-bottom:solid windowtext 1.0pt;border-right:solid windowtext 1.0pt; mso-border-top-alt:solid windowtext .5pt;mso-border-left-alt:solid windowtext .5pt; mso-border-alt:solid windowtext .5pt;padding:0cm 5.4pt 0cm 5.4pt">

3

<td width="326" valign="top" style="width:244.45pt;border:solid windowtext 1.0pt; border-top:none;mso-border-top-alt:solid windowtext .5pt;mso-border-alt:solid windowtext .5pt; padding:0cm 5.4pt 0cm 5.4pt">

Berth:

<td width="326" valign="top" style="width:244.45pt;border-top:none;border-left: none;border-bottom:solid windowtext 1.0pt;border-right:solid windowtext 1.0pt; mso-border-top-alt:solid windowtext .5pt;mso-border-left-alt:solid windowtext .5pt; mso-border-alt:solid windowtext

.5pt;padding:0cm 5.4pt 0cm 5.4pt">

5

<td width="326" valign="top" style="width:244.45pt;border:solid windowtext 1.0pt; border-top:none;mso-border-top-alt:solid windowtext .5pt;mso-border-alt:solid windowtext .5pt; padding:0cm 5.4pt 0cm 5.4pt">

Toilet:

<td width="326" valign="top" style="width:244.45pt;border-top:none;border-left: none;border-bottom:solid windowtext 1.0pt;border-right:solid windowtext 1.0pt; mso-border-top-alt:solid windowtext .5pt;mso-border-left-alt:solid windowtext .5pt; mso-border-alt:solid windowtext .5pt;padding:0cm 5.4pt 0cm 5.4pt">

2

<td width="326" valign="top" style="width:244.45pt;border:solid windowtext 1.0pt; border-top:none;mso-border-top-alt:solid windowtext .5pt;mso-border-alt:solid windowtext .5pt; padding:0cm 5.4pt 0cm 5.4pt">

<td width="326" valign="top" style="width:244.45pt;border-top:none;border-left: none;border-bottom:solid windowtext 1.0pt;border-right:solid windowtext 1.0pt; mso-border-top-alt:solid windowtext .5pt;mso-border-left-alt:solid windowtext .5pt; mso-border-alt:solid windowtext .5pt;padding:0cm 5.4pt 0cm 5.4pt">

<td width="652" colspan="2" valign="top" style="width:488.9pt;border:solid windowtext 1.0pt; border-top:none;mso-border-top-alt:solid windowtext .5pt;mso-border-alt:solid windowtext .5pt; background:#F2F2F2;mso-background-themecolor:background1;mso-background-theseshade: 242;padding:0cm 5.4pt 0cm 5.4pt">

ENGINE

<td width="326" valign="top" style="width:244.45pt;border:solid windowtext 1.0pt; border-top:none;mso-border-top-alt:solid windowtext .5pt;mso-border-alt:solid windowtext .5pt; padding:0cm 5.4pt 0cm 5.4pt">

Brand:

<td width="326" valign="top" style="width:244.45pt;border-top:none;border-left: none;border-bottom:solid windowtext 1.0pt;border-right:solid windowtext 1.0pt; mso-border-top-alt:solid windowtext .5pt;mso-border-left-alt:solid windowtext .5pt; mso-border-alt:solid windowtext .5pt;padding:0cm 5.4pt 0cm 5.4pt">

CUMMINS

<td width="326" valign="top" style="width:244.45pt;border:solid windowtext 1.0pt; border-top:none;mso-border-top-alt:solid windowtext .5pt;mso-border-alt:solid windowtext .5pt; padding:0cm 5.4pt 0cm 5.4pt">

Model:

<td width="326" valign="top" style="width:244.45pt;border-top:none;border-left: none;border-bottom:solid windowtext 1.0pt;border-right:solid windowtext 1.0pt; mso-border-top-alt:solid windowtext .5pt;mso-border-left-alt:solid windowtext .5pt; mso-border-alt:solid windowtext .5pt;padding:0cm 5.4pt 0cm 5.4pt">

QSB 6.7

<td width="326" valign="top" style="width:244.45pt;border:solid windowtext 1.0pt; border-top:none;mso-border-top-alt:solid windowtext .5pt;mso-border-alt:solid windowtext .5pt; padding:0cm 5.4pt 0cm 5.4pt">

Power:

<td width="326" valign="top" style="width:244.45pt;border-top:none;border-left: none;border-bottom:solid windowtext 1.0pt;border-right:solid windowtext 1.0pt; mso-border-top-alt:solid windowtext .5pt;mso-border-left-alt:solid windowtext .5pt; mso-border-alt:solid windowtext .5pt;padding:0cm 5.4pt 0cm 5.4pt">

2 X 355 HP

<td width="326" valign="top" style="width:244.45pt;border:solid windowtext 1.0pt; border-top:none;mso-border-top-alt:solid windowtext .5pt;mso-border-alt:solid windowtext .5pt; padding:0cm 5.4pt 0cm 5.4pt">

Engine hours:

<td width="326" valign="top" style="width:244.45pt;border-top:none;border-left: none;border-bottom:solid windowtext 1.0pt;border-right:solid windowtext 1.0pt; mso-border-top-alt:solid windowtext .5pt;mso-border-left-alt:solid windowtext .5pt; mso-border-alt:solid windowtext .5pt;padding:0cm 5.4pt 0cm 5.4pt">

200

<td width="326" valign="top" style="width:244.45pt;border:solid windowtext 1.0pt; border-top:none;mso-border-top-alt:solid windowtext .5pt;mso-border-alt:solid windowtext .5pt; padding:0cm 5.4pt 0cm 5.4pt">

Trasmission:

<td width="326" valign="top" style="width:244.45pt;border-top:none;border-left: none;border-

bottom:solid windowtext 1.0pt;border-right:solid windowtext 1.0pt; mso-border-top-alt:solid windowtext .5pt;mso-border-left-alt:solid windowtext .5pt; mso-border-alt:solid windowtext .5pt;padding:0cm 5.4pt 0cm 5.4pt">

SHAFT DRIVE

<td width="326" valign="top" style="width:244.45pt;border:solid windowtext 1.0pt; border-top:none;mso-border-top-alt:solid windowtext .5pt;mso-border-alt:solid windowtext .5pt; padding:0cm 5.4pt 0cm 5.4pt">

Fuel:

<td width="326" valign="top" style="width:244.45pt;border-top:none;border-left: none;border-bottom:solid windowtext 1.0pt;border-right:solid windowtext 1.0pt; mso-border-top-alt:solid windowtext .5pt;mso-border-left-alt:solid windowtext .5pt; mso-border-alt:solid windowtext .5pt;padding:0cm 5.4pt 0cm 5.4pt">

Diesel

<td width="326" valign="top" style="width:244.45pt;border:solid windowtext 1.0pt; border-top:none;mso-border-top-alt:solid windowtext .5pt;mso-border-alt:solid windowtext .5pt; padding:0cm 5.4pt 0cm 5.4pt">

<td width="326" valign="top" style="width:244.45pt;border-top:none;border-left: none;border-bottom:solid windowtext 1.0pt;border-right:solid windowtext 1.0pt; mso-border-top-alt:solid windowtext .5pt;mso-border-left-alt:solid windowtext .5pt; mso-border-alt:solid windowtext .5pt;padding:0cm 5.4pt 0cm 5.4pt">

<td width="652" colspan="2" valign="top" style="width:488.9pt;border:solid windowtext 1.0pt; border-top:none;mso-border-top-alt:solid windowtext .5pt;mso-border-alt:solid windowtext .5pt; background:#F2F2F2;mso-background-themecolor:background1;mso-background-themeshade: 242;padding:0cm 5.4pt 0cm 5.4pt">

ELETRIC

<td width="652" colspan="2" valign="top" style="width:488.9pt;border:solid windowtext 1.0pt; border-top:none;mso-border-top-alt:solid windowtext .5pt;mso-border-alt:solid windowtext .5pt; padding:0cm 5.4pt 0cm 5.4pt">

12V - 220V - Air Conditioning - Heating system - Generator 11 Kw Onan

<td width="326" valign="top" style="width:244.45pt;border:solid windowtext 1.0pt; border-

top:none;mso-border-top-alt:solid windowtext .5pt;mso-border-alt:solid windowtext .5pt;
padding:0cm 5.4pt 0cm 5.4pt">

<td width="326" valign="top" style="width:244.45pt;border-top:none;border-left: none;border-
bottom:solid windowtext 1.0pt;border-right:solid windowtext 1.0pt; mso-border-top-alt:solid
windowtext .5pt;mso-border-left-alt:solid windowtext .5pt; mso-border-alt:solid windowtext
.5pt;padding:0cm 5.4pt 0cm 5.4pt">

<td width="652" colspan="2" valign="top" style="width:488.9pt;border:solid windowtext 1.0pt;
border-top:none;mso-border-top-alt:solid windowtext .5pt;mso-border-alt:solid windowtext .5pt;
background:#F2F2F2;mso-background-themecolor:background1;mso-background-themeshade:
242;padding:0cm 5.4pt 0cm 5.4pt">

EQUIPMENT

<td width="652" colspan="2" valign="top" style="width:488.9pt;border:solid windowtext 1.0pt;
border-top:none;mso-border-top-alt:solid windowtext .5pt;mso-border-alt:solid windowtext .5pt;
padding:0cm 5.4pt 0cm 5.4pt">

GPS/Plotter RAYMARINE - Autopilot RAYMARINE - Radar RAYMARINE - VHF RAYMARINE

<td width="326" valign="top" style="width:244.45pt;border:solid windowtext 1.0pt; border-
top:none;mso-border-top-alt:solid windowtext .5pt;mso-border-alt:solid windowtext .5pt;
padding:0cm 5.4pt 0cm 5.4pt">

<td width="326" valign="top" style="width:244.45pt;border-top:none;border-left: none;border-
bottom:solid windowtext 1.0pt;border-right:solid windowtext 1.0pt; mso-border-top-alt:solid
windowtext .5pt;mso-border-left-alt:solid windowtext .5pt; mso-border-alt:solid windowtext
.5pt;padding:0cm 5.4pt 0cm 5.4pt">

<td width="652" colspan="2" valign="top" style="width:488.9pt;border:solid windowtext 1.0pt;
border-top:none;mso-border-top-alt:solid windowtext .5pt;mso-border-alt:solid windowtext .5pt;
background:#F2F2F2;mso-background-themecolor:background1;mso-background-themeshade:
242;padding:0cm 5.4pt 0cm 5.4pt">

ACCESSORIES

<td width="652" colspan="2" valign="top" style="width:488.9pt;border:solid windowtext 1.0pt;

border-top:none;mso-border-top-alt:solid windowtext .5pt;mso-border-alt:solid windowtext .5pt; padding:0cm 5.4pt 0cm 5.4pt">

Bow thruster - Stern thruster - Bathing ladder - Tender - Outboard - Cockpit covering - Bimini top - Bow sun cushion - Cushions - Fridge - Freezer - Oven - Underwater lights - Stereo sound system - TV - Water pump - Chain counter - Shore water plug - Gangway - CD player - Leather sofa - Coverings - Waste holding tank - Joystick controller - Battery charger - Fridge on fly - Searchlight - Grill on fly - Water heater - Teak platform - Teak cockpit - Grey hull - Up/down table on fly - Cockpit table + chairs - Nets - Dimmer lights - Fly totem shower.

Основная информация

Тип судна: Моторная яхта

Модельный год: 2014

Год постройки: 2014

Страна: Italy

Открытая палуба мостика: Да

Размеры

Длина общая: 42' 7" (12.96m)

Ширина: 14' 6" (4.40m)

Мин. осадка: 4' 4" (1.30m)

Макс. осадка: 4' 4" (1.30m)

Скорость, вместимость и масса

Водоизмещение: 40013.900553 Pounds

Вместимость воды: 158.5032312 Gallons

Объем топливного бака: 443.80904736
Gallons

Размещение

Всего кают: 3

Всего коек: 5

Всего ком. состава: 2

Корпус и палуба

Материал корпуса: Fiberglass

Информация о двигателе

Двигатели: 2

Производитель: Cummins

Модель: QSB 6.7

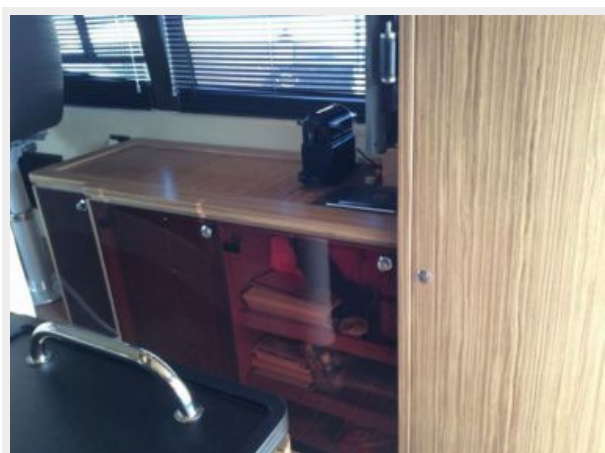
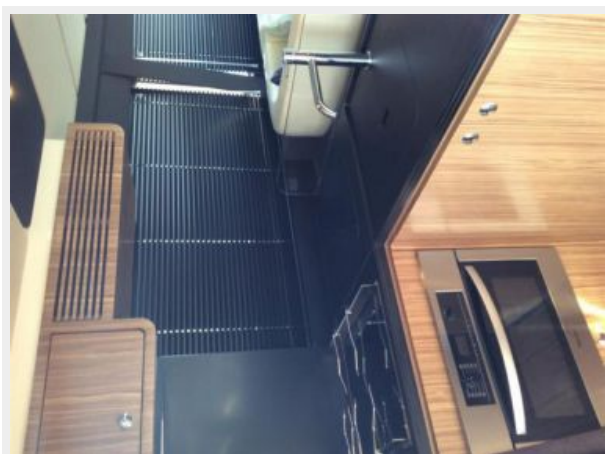
Тип двигателя: Inboard

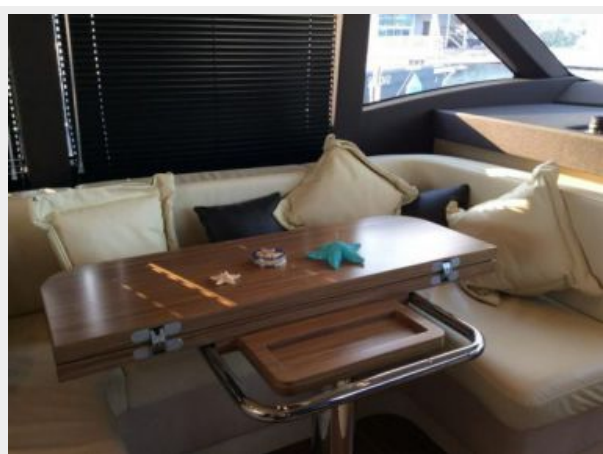
Тип топлива: Diesel

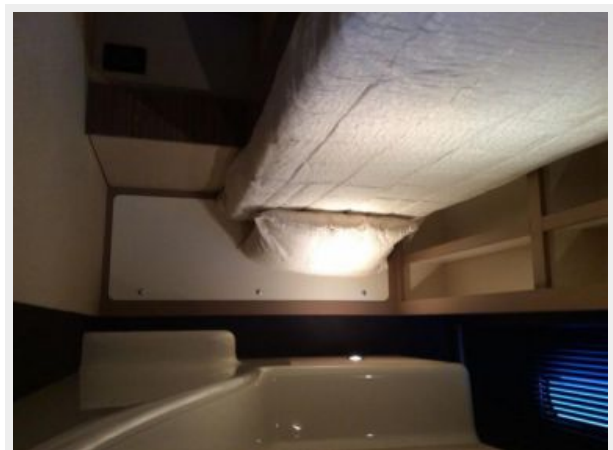
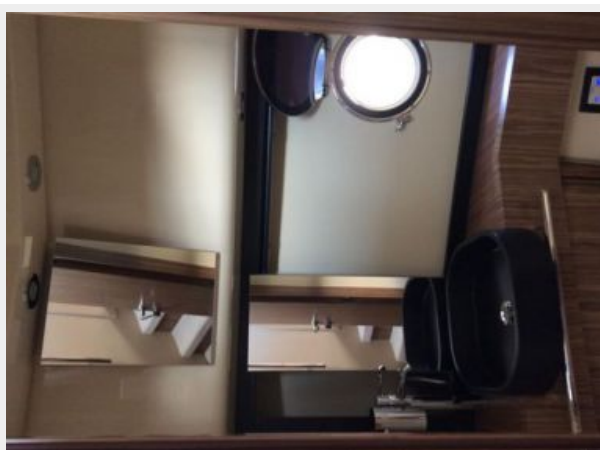
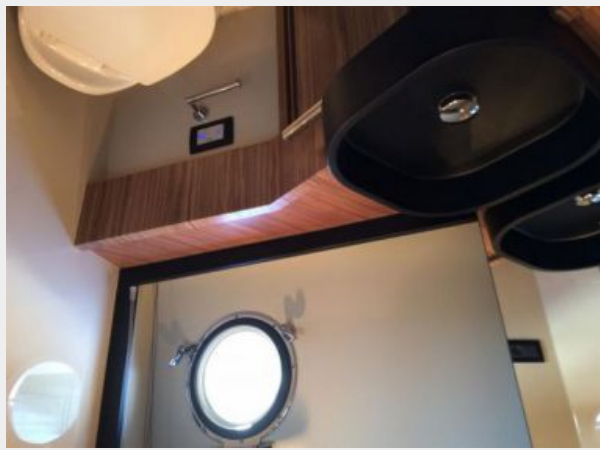
ФОТОГРАФИИ

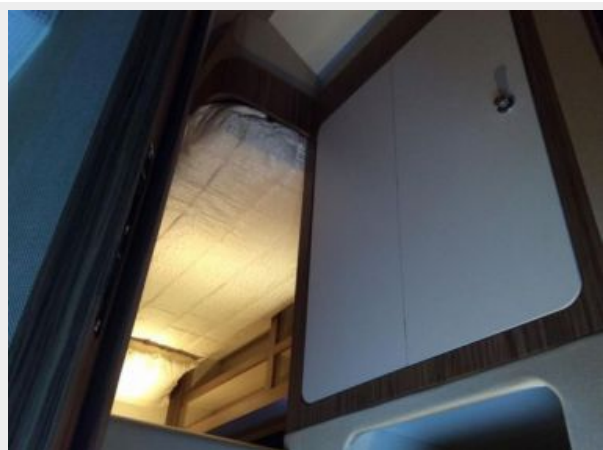


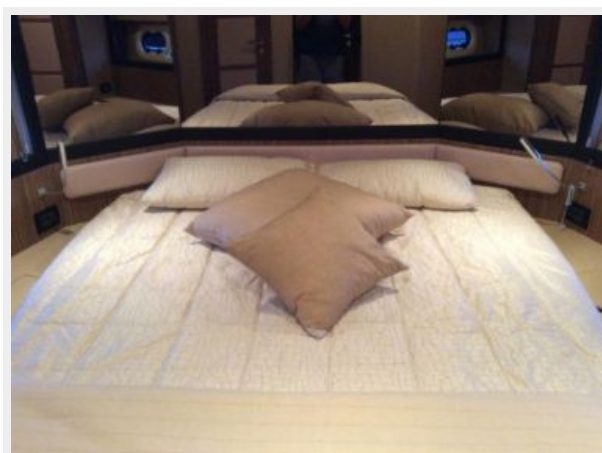
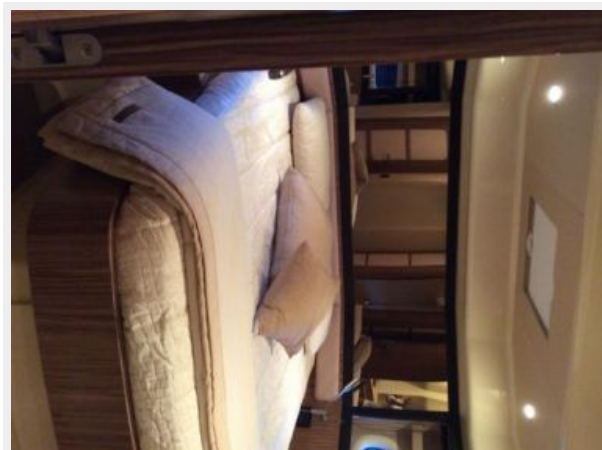














КОНТАКТЫ

Андрей Шестаков (Andrey Shestakov) – ведущий яхтенный брокер отдела продаж яхт и судов компании Shestakov Yacht Sales Inc. Официальный представитель Shestakov Yacht Sales Inc. для русскоговорящих клиентов в центральном офисе компании в Майами/Форт Лодердейл/Флорида/США.

Контактная информация

Email: andrey@shestakovyachtsales.com

Web: shestakovyachtsales.com

Телефоны

Краснодарский край: **+7(918)465-66-44**

США, Майами, Флорида: **+1(954)274-4435**

Время работы

Понедельник – Суббота: **9:00 - 21:00**
EDT

Воскресенье: **Закрето**

Адрес



Harbour Towne Marina, 850 NE 3rd St,
STE 213, Dania, FL 33004