

SARP YACHT 46M — SARP YACHT



Builder: SARP YACHT

Year Built: 2015

Model: Mega Yacht

Price: PRICE ON APPLICATION

Location: Turkey

LOA: 151' 0" (46.00m)

Beam: 29' 7" (9.00m)

Max Draft: 7' 11" (2.40m)

Cruise Speed: 12 Kts. (14 MPH)

Max Speed: 15 Kts. (17 MPH)

Our experienced yacht broker, Andrey Shestakov, will help you choose and buy a yacht that best suits your needs Sarp Yacht 46m — SARP YACHT from our catalogue. Presently, at Shestakov Yacht Sales Inc., we have a wide variety of yachts available on our sale's list. We also work in close contact with all the big yacht manufacturers from all over the world.

If you would like to buy a yacht Sarp Yacht 46m — SARP YACHT or would like help answering any questions concerning purchasing, selling or chartering a yacht, please call +1(954)274-4435

TABLE OF CONTENTS

TABLE OF CONTENTS	2
SPECIFICATIONS	5
Overview	5
Basic Information	5
Dimensions	6
Speed, Capacities and Weight	6
Accommodations	6
Hull and Deck Information	6
Engine Information	7
DETAILED INFORMATION	8
Broker's Comments	8
Accommodations	8
Propulsion	8
Auxiliary Machinery & Electrical System	8
Tank Capacities	9
Projected Range	9
Ancillary Equipment	9
Navigation Equipment	9
Communication Equipment	9
Deck Equipment	10
Safety & Fire Protection	10
Tenders & Watersports Equipment	10
Audio & Visual Equipment	10
Domestic Equipment	12
Paint System	12
Exclusions	12
Disclaimer	12
PHOTOS	14

Saloon looking forward	15
Saloon looking aft	15
Dinning	15
Saloon and dinning	15
Saloon and dinning	15
Sky Lounge looking forward	16
Sky Lounge looking to port	16
Sky Lounge looking aft	16
Master Suite looking to starboard	16
Master Suite looking to starboard	16
Master Suite looking to starboard	16
Master Suite looking to port	17
Master en-suite, port side	17
Master en-suite, port side	17
Guest Double, port side	17
Guest Double, port side	17
Guest Double En-suite	17
Sarp Yacht Shipyard	18
Sarp 46m in build	18
Galley - in build	18
Master Suite - in build	18
Guest Double En-Suite - in build	19
Guest Double - in build	19
Guest Double En-Suite - in build	19
Crew Bunk Cabin	19
GA	20
Crew Mess	20
CONTACTS	21
Contact details	21

Telephones	21
Office hours	21
Address	21

SPECIFICATIONS

Overview

Media, brokers and clients alike eagerly await arrival of the SARP 46M as rumors spread that the Sarp Yacht shipyard is on course to set a new standard in this market sector. Excellent attention to detail is obvious when visiting the immaculate and modern 10,000sqm shipyard and will result in a high class finished article offering a superb price to quality ratio.

The multi award winning design of the SARP 46M with sophisticated lines and state-of-the-art, but well proven systems is sure to stand the test of time. A composite superstructure tops the steel displacement hull that was comprehensively analysed to reduce resistance and wave profile. This use of composite rather than aluminum above the deck benefits both stability and efficiency by reducing weight aloft whilst also decreasing maintenance.

The SARP 46m provides accommodation for 10 to 12 guests in five excellent cabins. Two doubles and two twins on the lower deck, both twins having Pullman berths, and a lovely full beam master suite on the main deck with adjoining study, his and hers bathrooms and two big walk in closets. The yacht can carry nine or 10 crew who will be delighted to find that the designers have given particular attention to operational practicality.

A wonderful balance is found between internal and external spaces with neither feeling as if it has been compromised to benefit the other. Spaciousness throughout combines with the subtle textures and tones of the Adam Lay interior to provide a relaxed ambience all helping to make the SARP 46M an ideal proposition for either private or charter use. Sarp hopes to complete the yacht ahead of schedule and possibly in time to display her with Northrop & Johnson at the 2015 Monaco Yacht Show from September 22 to 26, 2015.

Basic Information

Category: Mega Yacht

Model Year: 2016

Year Built: 2015

Country: Turkey

Dimensions

LOA: 151' 0" (46.00m)**LWL:** 135' 1" (41.16m)**Beam:** 29' 7" (9.00m)**Max Draft:** 7' 11" (2.40m)

Speed, Capacities and Weight

Cruise Speed: 12 Kts. (14 MPH)**Cruise Speed RPM:** 1400 Kts.**Cruise Speed Range:** 3200**Max Speed:** 15 Kts. (17 MPH)**Max Speed RPM:** 1800 Kts.**Displacement:** 890667.53848 Pounds**Gross Tonnage:** 490 Pounds**Water Capacity:** 3170.064624 Gallons**Holding Tank:** 6709.9701208 Gallons**Fuel Capacity:** 15031.3897588 Gallons

Accommodations

Total Cabins: 5**Total Berths:** 9**Sleeps:** 12**Total Heads:** 7**Captain Cabin:** True**Crew Cabin:** 5**Crew Berths:** 9**Crew Sleeps:** 10**Crew Heads:** 5

Hull and Deck Information

Hull Material: Steel**Deck Material:** Teak**Hull Configuration:** Displacement w/
Bulbous Bow**Hull Designer:** Taka Yacht Design**Exterior Designer:** Taka Yacht Design**Interior Designer:** Adam Lay Studio

Engine Information

Engines: 2

Manufacturer: Caterpillar

Model: C32 1000Hp

Engine Type: Inboard

Fuel Type: Diesel

DETAILED INFORMATION

Broker's Comments

Media, brokers and clients alike eagerly await arrival of the SARP 46M as rumors spread that the Sarp Yacht shipyard is on course to set a new standard in this market sector. Excellent attention to detail is obvious when visiting the immaculate and modern 10,000sqm shipyard and will result in a high class finished article offering a superb price to quality ratio.

The multi award winning design of the SARP 46M with sophisticated lines and state-of-the-art, but well proven systems is sure to stand the test of time. A composite superstructure tops the steel displacement hull that was comprehensively analysed to reduce resistance and wave profile. This use of composite rather than aluminum above the deck benefits both stability and efficiency by reducing weight aloft whilst also decreasing maintenance.

The SARP 46m provides accommodation for 10 to 12 guests in five excellent cabins. Two doubles and two twins on the lower deck, both twins having Pullman berths, and a lovely full beam master suite on the main deck with adjoining study, his and hers bathrooms and two big walk in closets. The yacht can carry nine or 10 crew who will be delighted to find that the designers have given particular attention to operational practicality.

Accommodations

Master Suite: Full beam on the main deck with study and his & hers bathrooms and walk-in closets **Guest Cabins:** All on the lower deck. Two doubles and two twins. Both twin cabins have a pullman berth and all cabins are en-suite. **Crew:** Captain's cabin behind the bridge with double berth and en-suite. 4 crew cabins on the lower deck forward each with two single berths in a bunk format and all with en-suite.

Propulsion

Main Engines: 2 x Caterpillar C32 Acert 12 cylinder diesels. 1000hp (746 kW) at 1800rpm.

Transmissions: Reintjes (4:1) reverse reduction **Shafts:** Teignbridge duplex stainless steel

Propellers: 5 blade Nibral

Auxiliary Machinery & Electrical System

2 x 100 kW Caterpillar Generators 380 Volt AC 3 phase 50 Hz, 220 Volts AC single phase 50Hz, 24Volt DC 380 Volt / 220 Volt 3 phase 50 HZ Engine start batteries 4 x Hydraulic batteries 6 x General service batteries 8 x Emergency batteries

Tank Capacities

Fuel tanks - 56,900 ltr Fuel overflow tank - 2,200 ltr Lube oil tanks - 1,600 ltr Dirty oil tank - 1,800 ltr Fresh water tanks - 12,000 ltr Fresh water tank for fire system - 3,800 ltr Black & Grey water collecting tank - 10,600 ltr Black water Sludge tank - 1,800 ltr Bilge water tank - 5,700 ltr Grey water tanks - 14,800 ltr

Projected Range

At 12 knots - 3,300nm At 11 knots - 4,000nm At 10 knots - 4,800nm

Ancillary Equipment

Data steering system 1 x 90 kW Wesmar electrical bowthruster Wesmar Zero Speed stabilizers 1 x Alfa Laval fuel separator plus 2 x Racor dual filter 1 x RWO oil/water separator 3 x Electric fire & bilge pumps (two located in engine room & one located on the bow with a dual purpose anchor wash) 1 x Emergency fire pump located in the fire room, all made by Azcue Bombas 2 x Idromar reverse osmosis watermakers each producing about 7,200 litres per day, 2 x 12 kW 250 litres Diko hot water boilers 2 x Wilo pumps with frequency drives Hamman sewage treatment system (Hamann HL-Contplus 02 Slim) Evac vacuum toilet system 432,000 BTU Cruisair Air conditioning, 106,000 BTU Fresh Air Make up unit system for Acc.area. Heinen Hopman air conditioning and cooling system for engine room

Navigation Equipment

5 x Hatteland 23" monitors 2 x Simrad IMO approved ARPA, 12 kW Radar scanner with 6 feet array 1 x Simrad multi-functional NSO EVO2 MF GPS & Chartplotter system processor Broadband 4G radar Echosounder with 3kW Broadband/Chirp transducer 1 x Overhead Magnetic Compass with mirror (Cassens & Plath or equivalent) 1 x GPS Compass (approved as THD) with dedicated control & display unit 1 x Simrad autopilot control unit, processor and rudder feedback 1 x Simrad approved GPS system with GPS antenna and dedicated control & display unit Simrad approved AIS system, including the Transponder, AIS-GPS Antenna and AIS-VHF Antenna. 1 x Skipper GDS-101 approved graphic depth sounder system, including bottom hull transducer with gate valve. 1 x Skipper EML-224 approved electromagnetic speed log system will be installed including bottom hull transducer with gate valve 1 x Airmar WX200 weather/wind sensor and dedicated wind display Kahlenberg triple trumpet chrome plated 24 V DC, Lopolight on main mast 2 x Search lights located on mast

Communication Equipment

Sailor-6000 series approved 150W MF/HF system including handset Sailor-6000 series

approved Mini-C GMDSS system including a message terminal, alarm panel, printer, antenna and emergency battery 2 x Sailor-6000 series CLASS A VHF DSC system, including Sailor VHF DSC control with handset and remote handset for each system 1 x Simrad SA70 SART; 1 x Simrad EG70 Auto/GPS EPIRB 2 x Entel HT649 GMDSS VHF radio pack with emergency Li & chargeable batteries 1 x JRC NCR-333 NAVTEX receiver and antenna 3 x Simrad HH36 VHF radios with chargeable batteries BNWAS system with control panel, reset buttons and Alarm panels as per regulations 1 x Intellian V100gx V-SAT antenna with Control Unit 1 x Intellian t1 10W HD ready Satellite TV antenna 1 x Hotspot / Wi-Fi antenna and 3 x 3G/4G GSM antennas for future requirements Central electronic telephone system made by Panasonic or equivalent, PABX, interfaced with Satcom and cellular system Livewire FB-10 Access Controller system for IT/Wi-Fi system control with off-vessel Internet connection and on-board wi-fi management

Deck Equipment

2 x Data electric vertical anchor windlasses 2 x DATA hydraulic stern capstans Manson Anchors, 2 x 430 kg HHP bow anchors Studlink Galvanised Chains 2 x 137,5 m 19 mm U2 Hydraulic telescopic 2000kg@5m boat crane in garage Hydraulic folding 1250kg@5.5m boat crane in fwd locker Hydraulic telescopic lifting pasarelle and also swimming ladder purposed Hydraulic boarding ladder on starboard side PCM and Freeman weathertight doors Bofor watertight doors and hatches Riviera Pool - Avalo, approximate 180 x 220cm ellipse spa-pool on sun deck

Safety & Fire Protection

4 x 16 man inflatable liferafts in glassfibre valises Extensive personal life saving equipment according to Classification and Flag state 1 x Rescue boat NOVEC fire extinguishing system for engine room Marioff watermist fixed fire extinguishing system for accomodation Portable fire exthinguishers located throughout in accomodation Fire fighting equipment according to Classification and Flag State Customised engine alarm monitoring system Consilium fire dedection and alarm system General alarm system Internal door alarm system Panasonic or equivalent CCTV system with camera in engine room, each deck showing entrances,aft deck, wheelhouse, and crew mess. Camera will be fixed lens CCTV with monitor screens located in bridge and crew mess.

Tenders & Watersports Equipment

1 x Novurania Chase 19 (main garage) 1 x Novurania DL400 with 50hp outboard 1 x set of scuba equipment 1 x Bauer compressor

Audio & Visual Equipment

Main Saloon / Dinning Audio on demand from central storage HK BDT Blue-ray player 7 x B&W

CCM 664 speakers 1 x B&W ASW 610 subwoofer, 1 x I-pad mini and Savant I-pad software, Satellite TV Full HD, 200Hz, Led, TV-Lift , Playing media on i-phone over Wi-Fi, AC control from automation

Main Deck Aft 4 x JL Audio 770 marine speaker

Foredeck 6 x JL Audio 770 marine speaker

Sky Lounge Audio on demand from central storage (contents limitations acc.to room or user should be possible), HK BDT 30 Blue-ray player, 5 x B&W CCM 664 speaker, 1 x B&W ASW subwoofer, 1 x I-pad mini and Savant I-pad software, Satellite TV Full HD, 200Hz, Led, TV-Lift, Playing media on i-phone over Wi-Fi, AC control from automation

Upper Deck Aft Audio on demand from central storage (contents limitations acc.to room or user should be possible), 6 x JL Audio 770 marine speaker, Playing media on i-phone over Wi-Fi, HK BDT 30 Blue-ray player (installed in to AV room), 1 x I-pad mini Savant I-pad software, Satellite TV Full HD, 200Hz, Led

Sun Deck 6 x JL Audio 770 marine speaker, 1 x I-pad dock

Master Suite Audio on demand from central storage, Playing media on i-phone over Wi-Fi, HK BDT 30 Blue ray player, 5 x B&W CCM 664 speaker, 1 x B&W ASW 610 subwoofer, 1 x I-pad mini and Savant I-pad software, Satellite TV Full HD, 200Hz, Led, AC control from automation, Waterproof music control keypad for bathroom

Master Suite Study 2 x B&W CCM 365 speaker

Aft Guest Cabins Satellite TV Full HD, 200Hz, Led, 2 x B&W CCM 365 speaker, HK BDS 280 Blue-ray player, AC control from automation, TV-Lift

Forward Guest Cabins Satellite TV Full HD, 200Hz, Led, 2 x B&W CCM 365 speaker, HK BDS 280 Blue-ray player , AC control from automation

Bridge 2 x B&W CCM 365 Ceiling Speakers, AC control from automation

Captain's Cabin Satellite TV Full HD, 200Hz, Led, 2 x B&W CCM 365 speaker, HK BDS 280 Blue-ray player , AC control from automation

Crew Mess Audio on demand from central storage (contents limitations acc.to room or user should be possible), Blue-ray player, 2 x speaker, 1 x subwoofer, AC control from automation, I-pod dock

Crew Cabins AC control from automation, JBL I-pod dock

Galley 2 x B&W CCM 365 speaker

Laundry JBL I-pod dock

Lighting Control Lighting control from entertainment system on guest and owner areas

Domestic Equipment

Main Galley 1 x electrical hob MIELE KM 6230, 1 x oven MIELE H 2661 BP, 1 x dishwasher MIELE G 4210, 1 x hood AISI 430 Master Ventil MV-700 mm-ELECTROLUX, 1 x steam oven MIELE DGC 6400, 1 x electrical grill VR 414- Gaggenau, 2 x fridge Miele KFN 14827, 1 x ELITE 15" Broan trash compactor.

Main Deck Pantry 1 x icemaker Marine - SS98-ULINE , 1 x dishwasher SMV68D00TR- Bosch, 1 x undercounter fridge KUR15A50NE - Bosch

Upper Deck Pantry 1 x icemaker Marine - SS98-ULINE , 1 x dishwasher SMV68D00TR-Bosch, 1 x undercounter fridge KUR15A50NE - Bosch

Sun Deck 1 x icemaker Marine - SS98-ULINE, 1 x fridge C95L Vitrifrigo, 2 x electrical grill VR 414- Gaggenau , 1 x tepenyakki Vario 400- VP 414- Gaggenau

Crew Passageway 2 x freezer MIELE KFN 14827, 1 x winecooler MIELE KWT 4154 UG-1

Pump Room 2 x freezer Hotpoint CHNAA 200T

Crew Mess 1 x fridge KIS87AF30N-Bosch, 1 x dishwasher SMV68D00TR-Bosch, 1 x microwave oven HMT85GL53- Bosch, 1 x icemaker Marine - SS98-ULINE, 1 x ELITE 15" -Broan trash compactor

Laundry 2 x washing machine WAY287X1TR-Bosch, 2 x tumble dryer WTY88740TR-Bosch, 2 x freezer GSN36AI31-Bosch

Paint System

Hull, topsides and superstructure - Akzonobel Awlgrip - Stark White Underwater surfaces and boottop - Akzonobel Awlgrip - Dark Grey Tanks - Akzonobel International

Exclusions

Owner's personal belongings.

Disclaimer

The Company offers the details of this vessel or yacht in good faith but cannot guarantee or warrant the accuracy of this information nor warrant the condition of the vessel. A buyer should instruct his representatives, agents, or his surveyors, to investigate such details as the buyer

desires validated. This vessel or yacht is offered subject to prior sale, price change, or withdrawal without notice.

PHOTOS





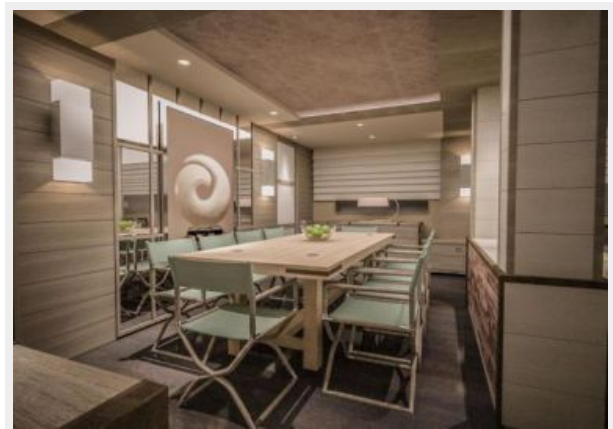
Saloon looking forward



Saloon looking aft



Dinning



Saloon and dinning



Saloon and dinning



Sky Lounge looking forward



Sky Lounge looking to port



Sky Lounge looking aft



Master Suite looking to starboard



Master Suite looking to starboard



Master Suite looking to starboard



Master Suite looking to port



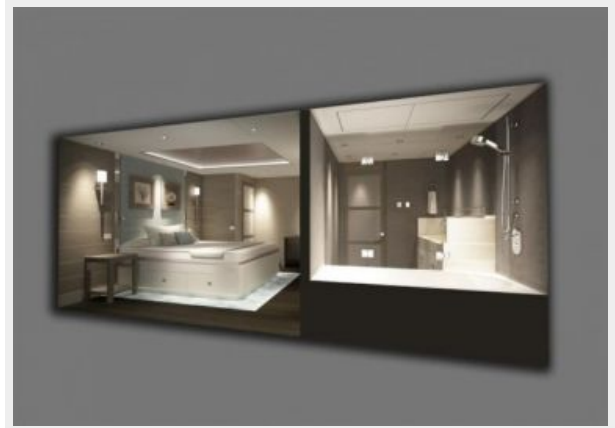
Master en-suite, port side



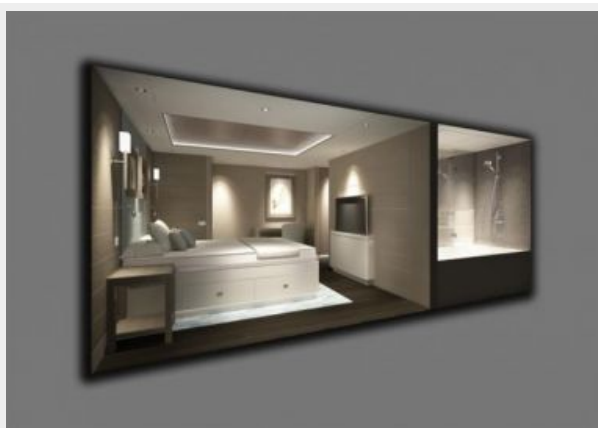
Master en-suite, port side



Guest Double, port side



Guest Double, port side



Guest Double En-suite



Sarp Yacht Shipyard

Sarp 46m in build



Galley - in build



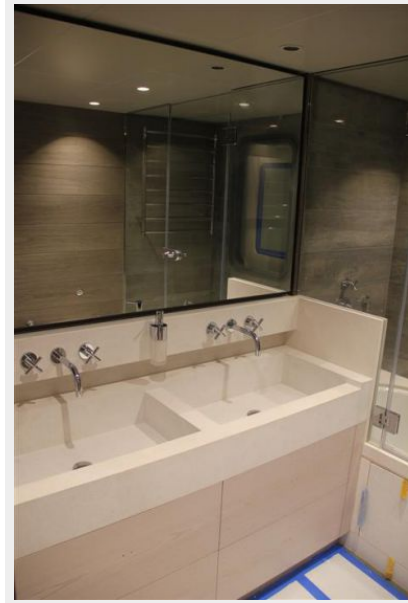
Master Suite - in build



Guest Double - in build



Guest Double En-Suite - in build



Guest Double En-Suite - in build



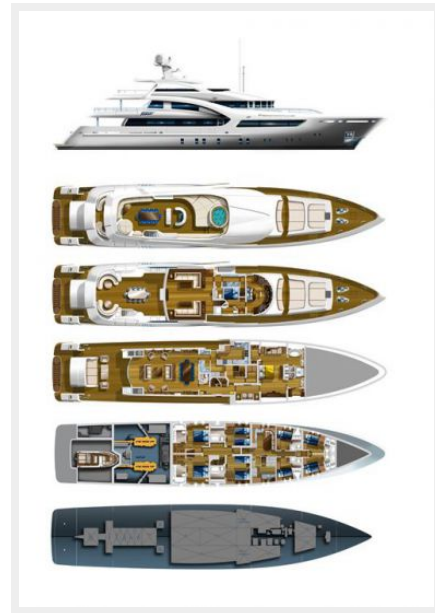
Crew Bunk Cabin



Crew Mess



GA



CONTACTS

Andrey Shestakov, leading yacht broker of the sales department of Shestakov Yacht Sales Inc. Shestakov Yacht Sales Inc., the official representative of the Miami/Fort Lauderdale FL headquarters.

Contact details

Email: andrey@shestakovyachtsales.com

Web: shestakovyachtsales.com/en/

Telephones

USA: +1(954)274-4435

Office hours

Monday – Saturday: **9:00 - 21:00** EDT

Sunday: **closed**

Address



Harbour Towne Marina, 850 NE 3rd St,
STE 213, Dania, FL 33004