

## SARP YACHT 46M — SARP YACHT



**Судостроитель:** SARP YACHT

**Год постройки:** 2015

**Модель:** Мега-яхта

**Цена:** **ЦЕНА ЯХТЫ ПО ЗАПРОСУ**

**Местонахождение:** Turkey

**Длина общая:** 151' 0" (46.00m)

**Ширина:** 29' 7" (9.00m)

**Макс. осадка:** 7' 11" (2.40m)

**Крейс. скорость:** 12 Kts. (14 MPH)

**Макс. скорость:** 15 Kts. (17 MPH)

Купить Sarp Yacht 46m — SARP YACHT а также выбрать подходящую вам яхту из нашего каталога яхт вам поможет опытный яхтенный брокер Андрей Шестаков. На сегодняшний день компания Shestakov Yacht Sales Inc. имеет большое количество яхт в собственном списке продаж, а также тесно сотрудничает со всеми крупными яхтенными производителями по всему миру.

Для того чтобы купить яхту Sarp Yacht 46m — SARP YACHT а также проконсультироваться по любому вопросу связанному с покупкой, продажей, чартером яхт позвоните по телефону **+7(918)465-66-44**.

# ОГЛАВЛЕНИЕ

ОГЛАВЛЕНИЕ	2
ХАРАКТЕРИСТИКИ	5
Обзор	5
Основная информация	5
Размеры	6
Скорость, вместимость и масса	6
Размещение	6
Корпус и палуба	7
Информация о двигателе	7
ПОДРОБНОЕ ОПИСАНИЕ	8
Broker's Comments	8
Accommodations	8
Propulsion	8
Auxiliary Machinery & Electrical System	8
Tank Capacities	9
Projected Range	9
Ancillary Equipment	9
Navigation Equipment	9
Communication Equipment	9
Deck Equipment	10
Safety & Fire Protection	10
Tenders & Watersports Equipment	10
Audio & Visual Equipment	10
Domestic Equipment	12
Paint System	12
Исключения	12
Отказ от ответственности	12
ФОТОГРАФИИ	14

---

Saloon looking forward	15
Saloon looking aft	15
Dinning	15
Saloon and dinning	15
Saloon and dinning	15
Sky Lounge looking forward	16
Sky Lounge looking to port	16
Sky Lounge looking aft	16
Master Suite looking to starboard	16
Master Suite looking to starboard	16
Master Suite looking to starboard	16
Master Suite looking to port	17
Master en-suite, port side	17
Master en-suite, port side	17
Guest Double, port side	17
Guest Double, port side	17
Guest Double En-suite	17
Sarp Yacht Shipyard	18
Sarp 46m in build	18
Galley - in build	18
Master Suite - in build	18
Guest Double En-Suite - in build	19
Guest Double - in build	19
Guest Double En-Suite - in build	19
Crew Bunk Cabin	19
GA	20
Crew Mess	20
<b>КОНТАКТЫ</b>	<b>21</b>
Контактная информация	21

---

---

Телефоны	21
Время работы	21
Адрес	21

---

# ХАРАКТЕРИСТИКИ

---

## Обзор

---

Media, brokers and clients alike eagerly await arrival of the SARP 46M as rumors spread that the Sarp Yacht shipyard is on course to set a new standard in this market sector. Excellent attention to detail is obvious when visiting the immaculate and modern 10,000sqm shipyard and will result in a high class finished article offering a superb price to quality ratio.

The multi award winning design of the SARP 46M with sophisticated lines and state-of-the-art, but well proven systems is sure to stand the test of time. A composite superstructure tops the steel displacement hull that was comprehensively analysed to reduce resistance and wave profile. This use of composite rather than aluminum above the deck benefits both stability and efficiency by reducing weight aloft whilst also decreasing maintenance.

The SARP 46m provides accommodation for 10 to 12 guests in five excellent cabins. Two doubles and two twins on the lower deck, both twins having Pullman berths, and a lovely full beam master suite on the main deck with adjoining study, his and hers bathrooms and two big walk in closets. The yacht can carry nine or 10 crew who will be delighted to find that the designers have given particular attention to operational practicality.

A wonderful balance is found between internal and external spaces with neither feeling as if it has been compromised to benefit the other. Spaciousness throughout combines with the subtle textures and tones of the Adam Lay interior to provide a relaxed ambience all helping to make the SARP 46M an ideal proposition for either private or charter use. Sarp hopes to complete the yacht ahead of schedule and possibly in time to display her with Northrop & Johnson at the 2015 Monaco Yacht Show from September 22 to 26, 2015.

---

## Основная информация

---

**Тип судна:** Мега-яхта

**Модельный год:** 2016

**Год постройки:** 2015

**Страна:** Turkey

## Размеры

---

**Длина общая:** 151' 0" (46.00m)

**Длина по ватерлинии:** 135' 1" (41.16m)

**Ширина:** 29' 7" (9.00m)

**Макс. осадка:** 7' 11" (2.40m)

## Скорость, вместимость и масса

---

**Крейс. скорость:** 12 Kts. (14 MPH)

**Крейсерская скорость поворота:** 1400 Kts.

**Дальность на крейсерской скорости:** 3200

**Макс. скорость:** 15 Kts. (17 MPH)

**Макс. скорость поворота:** 1800 Kts.

**Водоизмещение:** 890667.53848 Pounds

**Чистый вес:** 490 Pounds

**Вместимость воды:** 3170.064624 Gallons

**Вместимость сточного бака:** 6709.9701208 Gallons

**Объем топливного бака:** 15031.3897588 Gallons

## Размещение

---

**Всего кают:** 5

**Всего коек:** 9

**Спальные места:** 12

**Всего ком. состава:** 7

**Каюта капитана:** Да

**Каюты экипажа:** 5

**Койки экипажа:** 9

**Спальных мест экипажа:** 10

**Комм. состав экипажа:** 5

## Корпус и палуба

---

**Материал корпуса:** Steel

**Материал палубы:** Teak

**Комплектация корпуса:** Displacement w/  
Bulbous Bow

**Дизайнер корпуса:** Taka Yacht Design

**Дизайнер экстерьера:** Taka Yacht Design

**Дизайнер интерьера:** Adam Lay Studio

## Информация о двигателе

---

**Двигатели:** 2

**Производитель:** Caterpillar

**Модель:** C32 1000Hp

**Тип двигателя:** Inboard

**Тип топлива:** Diesel

---

# ПОДРОБНОЕ ОПИСАНИЕ

---

## Broker's Comments

---

Media, brokers and clients alike eagerly await arrival of the SARP 46M as rumors spread that the Sarp Yacht shipyard is on course to set a new standard in this market sector. Excellent attention to detail is obvious when visiting the immaculate and modern 10,000sqm shipyard and will result in a high class finished article offering a superb price to quality ratio.

The multi award winning design of the SARP 46M with sophisticated lines and state-of-the-art, but well proven systems is sure to stand the test of time. A composite superstructure tops the steel displacement hull that was comprehensively analysed to reduce resistance and wave profile. This use of composite rather than aluminum above the deck benefits both stability and efficiency by reducing weight aloft whilst also decreasing maintenance.

The SARP 46m provides accommodation for 10 to 12 guests in five excellent cabins. Two doubles and two twins on the lower deck, both twins having Pullman berths, and a lovely full beam master suite on the main deck with adjoining study, his and hers bathrooms and two big walk in closets. The yacht can carry nine or 10 crew who will be delighted to find that the designers have given particular attention to operational practicality.

## Accommodations

---

**Master Suite:** Full beam on the main deck with study and his & hers bathrooms and walk-in closets **Guest Cabins:** All on the lower deck. Two doubles and two twins. Both twin cabins have a pullman berth and all cabins are en-suite. **Crew:** Captain's cabin behind the bridge with double berth and en-suite. 4 crew cabins on the lower deck forward each with two single berths in a bunk format and all with en-suite.

## Propulsion

---

**Main Engines:** 2 x Caterpillar C32 Acert 12 cylinder diesels. 1000hp (746 kW) at 1800rpm.

**Transmissions:** Reintjes (4:1) reverse reduction **Shafts:** Teignbridge duplex stainless steel

**Propellers:** 5 blade Nibral

## Auxiliary Machinery & Electrical System

---

2 x 100 kW Caterpillar Generators 380 Volt AC 3 phase 50 Hz, 220 Volts AC single phase 50Hz, 24Volt DC 380 Volt / 220 Volt 3 phase 50 HZ Engine start batteries 4 x Hydraulic batteries 6 x General service batteries 8 x Emergency batteries



---

## Tank Capacities

---

Fuel tanks - 56,900 ltr Fuel overflow tank - 2,200 ltr Lube oil tanks - 1,600 ltr Dirty oil tank - 1,800 ltr Fresh water tanks - 12,000 ltr Fresh water tank for fire system - 3,800 ltr Black & Grey water collecting tank - 10,600 ltr Black water Sludge tank - 1,800 ltr Bilge water tank - 5,700 ltr Grey water tanks - 14,800 ltr

---

## Projected Range

---

At 12 knots - 3,300nm At 11 knots - 4,000nm At 10 knots - 4,800nm

---

## Ancillary Equipment

---

Data steering system 1 x 90 kW Wesmar electrical bowthruster Wesmar Zero Speed stabilizers 1 x Alfa Laval fuel separator plus 2 x Racor dual filter 1 x RWO oil/water separator 3 x Electric fire & bilge pumps (two located in engine room & one located on the bow with a dual purpose anchor wash) 1 x Emergency fire pump located in the fire room, all made by Azcue Bombas 2 x Idromar reverse osmosis watermakers each producing about 7,200 litres per day, 2 x 12 kW 250 litres Diko hot water boilers 2 x Wilo pumps with frequency drives Hamman sewage treatment system (Hamann HL-Contplus 02 Slim) Evac vacuum toilet system 432,000 BTU Cruisair Air conditioning, 106,000 BTU Fresh Air Make up unit system for Acc.area. Heinen Hopman air conditioning and cooling system for engine room

---

## Navigation Equipment

---

5 x Hatteland 23" monitors 2 x Simrad IMO approved ARPA, 12 kW Radar scanner with 6 feet array 1 x Simrad multi-functional NSO EVO2 MF GPS & Chartplotter system processor Broadband 4G radar Echosounder with 3kW Broadband/Chirp transducer 1 x Overhead Magnetic Compass with mirror (Cassens & Plath or equivalent) 1 x GPS Compass (approved as THD) with dedicated control & display unit 1 x Simrad autopilot control unit, processor and rudder feedback 1 x Simrad approved GPS system with GPS antenna and dedicated control & display unit Simrad approved AIS system, including the Transponder, AIS-GPS Antenna and AIS-VHF Antenna. 1 x Skipper GDS-101 approved graphic depth sounder system, including bottom hull transducer with gate valve. 1 x Skipper EML-224 approved electromagnetic speed log system will be installed including bottom hull transducer with gate valve 1 x Airmar WX200 weather/wind sensor and dedicated wind display Kahlenberg triple trumpet chrome plated 24 V DC, Lopolight on main mast 2 x Search lights located on mast

---

## Communication Equipment

---

Sailor-6000 series approved 150W MF/HF system including handset Sailor-6000 series

approved Mini-C GMDSS system including a message terminal, alarm panel, printer, antenna and emergency battery 2 x Sailor-6000 series CLASS A VHF DSC system, including Sailor VHF DSC control with handset and remote handset for each system 1 x Simrad SA70 SART; 1 x Simrad EG70 Auto/GPS EPIRB 2 x Entel HT649 GMDSS VHF radio pack with emergency Li & chargeable batteries 1 x JRC NCR-333 NAVTEX receiver and antenna 3 x Simrad HH36 VHF radios with chargeable batteries BNWAS system with control panel, reset buttons and Alarm panels as per regulations 1 x Intellian V100gx V-SAT antenna with Control Unit 1 x Intellian t1 10W HD ready Satellite TV antenna 1 x Hotspot / Wi-Fi antenna and 3 x 3G/4G GSM antennas for future requirements Central electronic telephone system made by Panasonic or equivalent, PABX, interfaced with Satcom and cellular system Livewire FB-10 Access Controller system for IT/Wi-Fi system control with off-vessel Internet connection and on-board wi-fi management

---

## Deck Equipment

---

2 x Data electric vertical anchor windlasses 2 x DATA hydraulic stern capstans Manson Anchors, 2 x 430 kg HHP bow anchors Studlink Galvanised Chains 2 x 137,5 m 19 mm U2 Hydraulic telescopic 2000kg@5m boat crane in garage Hydraulic folding 1250kg@5.5m boat crane in fwd locker Hydraulic telescopic lifting pasarelle and also swimming ladder purposed Hydraulic boarding ladder on starboard side PCM and Freeman weathertight doors Bofor watertight doors and hatches Riviera Pool - Avalo, approximate 180 x 220cm ellipse spa-pool on sun deck

---

## Safety & Fire Protection

---

4 x 16 man inflatable liferafts in glassfibre valises Extensive personal life saving equipment according to Classification and Flag state 1 x Rescue boat NOVEC fire extinguishing system for engine room Marioff watermist fixed fire extinguishing system for accomodation Portable fire exthinguishers located throughout in accomodation Fire fighting equipment according to Classification and Flag State Customised engine alarm monitoring system Consilium fire dedection and alarm system General alarm system Internal door alarm system Panasonic or equivalent CCTV system with camera in engine room, each deck showing entrances,aft deck, wheelhouse, and crew mess. Camera will be fixed lens CCTV with monitor screens located in bridge and crew mess.

---

## Tenders & Watersports Equipment

---

1 x Novurania Chase 19 (main garage) 1 x Novurania DL400 with 50hp outboard 1 x set of scuba equipment 1 x Bauer compressor

---

## Audio & Visual Equipment

---

Main Saloon / Dinning Audio on demand from central storage HK BDT Blue-ray player 7 x B&W

CCM 664 speakers 1 x B&W ASW 610 subwoofer, 1 x I-pad mini and Savant I-pad software, Satellite TV Full HD, 200Hz, Led, TV-Lift , Playing media on i-phone over Wi-Fi, AC control from automation

Main Deck Aft 4 x JL Audio 770 marine speaker

Foredeck 6 x JL Audio 770 marine speaker

Sky Lounge Audio on demand from central storage (contents limitations acc.to room or user should be possible), HK BDT 30 Blue-ray player, 5 x B&W CCM 664 speaker, 1 x B&W ASW subwoofer, 1 x I-pad mini and Savant I-pad software, Satellite TV Full HD, 200Hz, Led, TV-Lift, Playing media on i-phone over Wi-Fi, AC control from automation

Upper Deck Aft Audio on demand from central storage (contents limitations acc.to room or user should be possible), 6 x JL Audio 770 marine speaker, Playing media on i-phone over Wi-Fi, HK BDT 30 Blue-ray player (installed in to AV room), 1 x I-pad mini Savant I-pad software, Satellite TV Full HD, 200Hz, Led

Sun Deck 6 x JL Audio 770 marine speaker, 1 x I-pad dock

Master Suite Audio on demand from central storage, Playing media on i-phone over Wi-Fi, HK BDT 30 Blue ray player, 5 x B&W CCM 664 speaker, 1 x B&W ASW 610 subwoofer, 1 x I-pad mini and Savant I-pad software, Satellite TV Full HD, 200Hz, Led, AC control from automation, Waterproof music control keypad for bathroom

Master Suite Study 2 x B&W CCM 365 speaker

Aft Guest Cabins Satellite TV Full HD, 200Hz, Led, 2 x B&W CCM 365 speaker, HK BDS 280 Blue-ray player, AC control from automation, TV-Lift

Forward Guest Cabins Satellite TV Full HD, 200Hz, Led, 2 x B&W CCM 365 speaker, HK BDS 280 Blue-ray player , AC control from automation

Bridge 2 x B&W CCM 365 Ceiling Speakers, AC control from automation

Captain's Cabin Satellite TV Full HD, 200Hz, Led, 2 x B&W CCM 365 speaker, HK BDS 280 Blue-ray player , AC control from automation

Crew Mess Audio on demand from central storage (contents limitations acc.to room or user should be possible), Blue-ray player, 2 x speaker, 1 x subwoofer, AC control from automation, I-pod dock

Crew Cabins AC control from automation, JBL I-pod dock

Galley 2 x B&W CCM 365 speaker

Laundry JBL I-pod dock

Lighting Control Lighting control from entertainment system on guest and owner areas

## Domestic Equipment

---

Main Galley 1 x electrical hob MIELE KM 6230, 1 x oven MIELE H 2661 BP, 1 x dishwasher MIELE G 4210, 1 x hood AISI 430 Master Ventil MV-700 mm-ELECTROLUX, 1 x steam oven MIELE DGC 6400, 1 x electrical grill VR 414- Gaggenau, 2 x fridge Miele KFN 14827, 1 x ELITE 15" Broan trash compactor.

Main Deck Pantry 1 x icemaker Marine - SS98-ULINE , 1 x dishwasher SMV68D00TR- Bosch, 1 x undercounter fridge KUR15A50NE - Bosch

Upper Deck Pantry 1 x icemaker Marine - SS98-ULINE , 1 x dishwasher SMV68D00TR-Bosch, 1 x undercounter fridge KUR15A50NE - Bosch

Sun Deck 1 x icemaker Marine - SS98-ULINE, 1 x fridge C95L Vitrifrigo, 2 x electrical grill VR 414- Gaggenau , 1 x tepenyakki Vario 400- VP 414- Gaggenau

Crew Passageway 2 x freezer MIELE KFN 14827, 1 x winecooler MIELE KWT 4154 UG-1

Pump Room 2 x freezer Hotpoint CHNAA 200T

Crew Mess 1 x fridge KIS87AF30N-Bosch, 1 x dishwasher SMV68D00TR-Bosch, 1 x microwave oven HMT85GL53- Bosch, 1 x icemaker Marine - SS98-ULINE, 1 x ELITE 15" -Broan trash compactor

Laundry 2 x washing machine WAY287X1TR-Bosch, 2 x tumble dryer WTY88740TR-Bosch, 2 x freezer GSN36AI31-Bosch

## Paint System

---

Hull, topsides and superstructure - Akzonobel Awlgrip - Stark White Underwater surfaces and boottop - Akzonobel Awlgrip - Dark Grey Tanks - Akzonobel International

## Исключения

---

При продаже яхты исключаются личные вещи владельца.

## Отказ от ответственности

---

Компания предоставляет описание судна или яхты добросовестно, но не может гарантировать точность этой информации, а также не ручается за техническое состояние. Покупатель должен проинструктировать своих агентов или оценщиков

исследовать представленную информацию более подробно, по собственному желанию. Продажа судна или яхты, изменение цены или снятие с продажи будет происходить без предварительного уведомления.

# ФОТОГРАФИИ





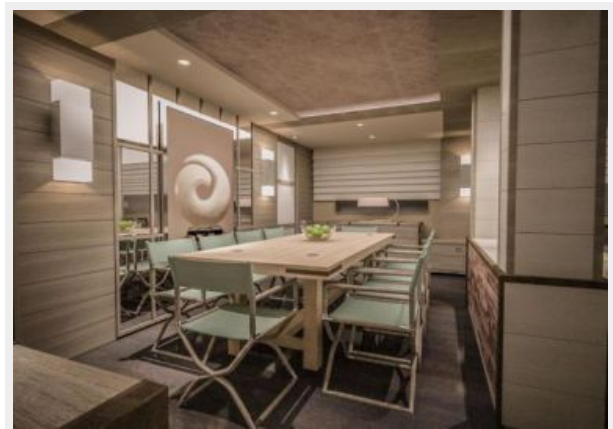
Saloon looking forward



Saloon looking aft



Dinning



Saloon and dinning



Saloon and dinning





**Sky Lounge looking forward**



**Sky Lounge looking to port**



**Sky Lounge looking aft**



**Master Suite looking to starboard**



**Master Suite looking to starboard**

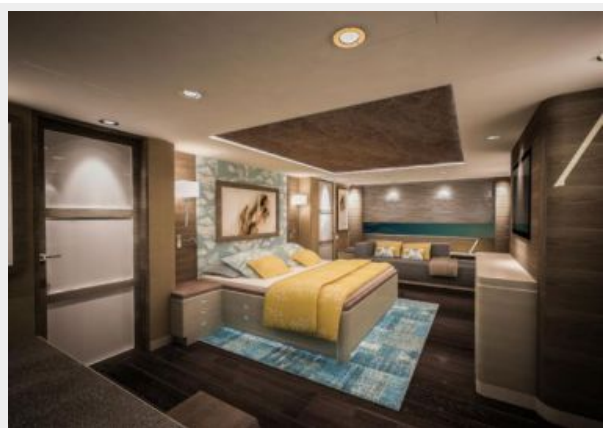


**Master Suite looking to starboard**





**Master Suite looking to port**



**Master en-suite, port side**



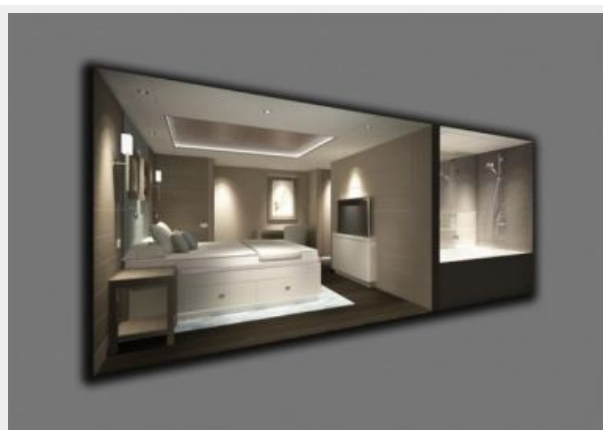
**Master en-suite, port side**



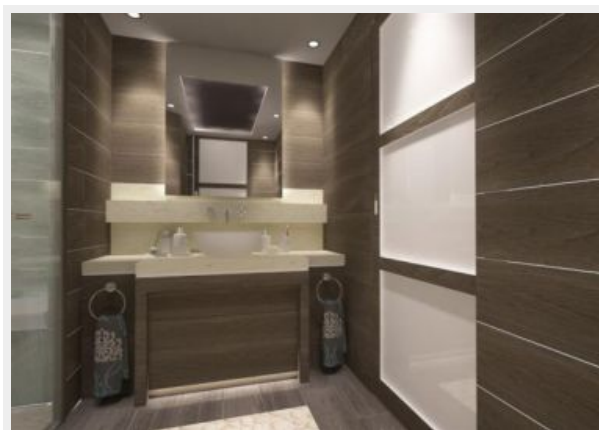
**Guest Double, port side**



**Guest Double, port side**



**Guest Double En-suite**



## Sarp Yacht Shipyard

### Sarp 46m in build



### Galley - in build



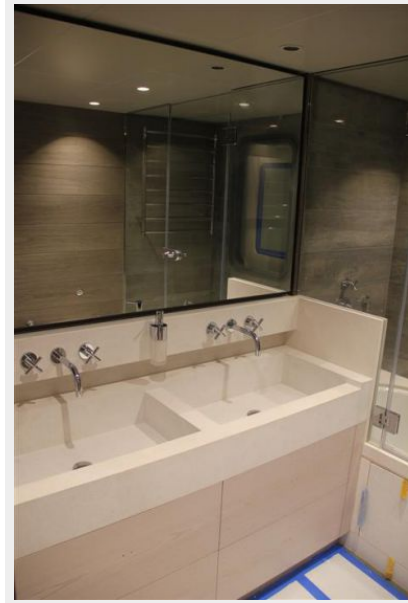
### Master Suite - in build



**Guest Double - in build**



**Guest Double En-Suite - in build**



**Guest Double En-Suite - in build**



**Crew Bunk Cabin**



### Crew Mess



### GA



# КОНТАКТЫ

---

Андрей Шестаков (Andrey Shestakov) – ведущий яхтенный брокер отдела продаж яхт и судов компании Shestakov Yacht Sales Inc. Официальный представитель Shestakov Yacht Sales Inc. для русскоговорящих клиентов в центральном офисе компании в Майами/Форт Лодердейл/Флорида/США.

## Контактная информация

---

Email: [andrey@shestakovyachtsales.com](mailto:andrey@shestakovyachtsales.com)

Web: [shestakovyachtsales.com](http://shestakovyachtsales.com)

## Телефоны

---

Краснодарский край: **+7(918)465-66-44**

США, Майами, Флорида: **+1(954)274-4435**

## Время работы

---

Понедельник – Суббота: **9:00 - 21:00**  
EDT

Воскресенье: **Закрито**

## Адрес

---



Harbour Towne Marina, 850 NE 3rd St,  
STE 213, Dania, FL 33004