

STRAY KAT — DENISON



Builder: DENISON

Year Built: 1985

Model: Motor Yacht

Price: PRICE ON APPLICATION

Location: United States

LOA: 86' 0" (26.21m)

Beam: 21' 4" (6.50m)

Max Draft: 6' 0" (1.83m)

Cruise Speed: 15 Kts. (17 MPH)

Max Speed: 18 Kts. (21 MPH)

Our experienced yacht broker, Andrey Shestakov, will help you choose and buy a yacht that best suits your needs **Stray Kat — DENISON** from our catalogue. Presently, at Shestakov Yacht Sales Inc., we have a wide variety of yachts available on our sale's list. We also work in close contact with all the big yacht manufacturers from all over the world.

If you would like to buy a yacht **Stray Kat — DENISON** or would like help answering any questions concerning purchasing, selling or chartering a yacht, please call **+1(954)274-4435**

TABLE OF CONTENTS

TABLE OF CONTENTS	2
SPECIFICATIONS	4
Overview	4
Basic Information	4
Dimensions	4
Speed, Capacities and Weight	4
Accommodations	4
Hull and Deck Information	4
Engine Information	5
DETAILED INFORMATION	6
Walkthrough	6
Accommodations	6
Aft Deck	6
Salon	6
Galley	7
Companionway	7
Master Stateroom	8
VIP Stateroom	8
Double Guest Staterooms	8
Crew	9
Pilothouse	9
Fly Bridge	9
Decks	10
Upgrades	10
Exclusion	11
Exclusions	11
Disclaimer	11
PHOTOS	12

CONTACTS	25
Contact details	25
Telephones	25
Office hours	25
Address	25

SPECIFICATIONS

Overview

\$2.7M refit in 2001. Four luxurious staterooms plus crew. Convenient Day Head. Make offer!
Trades considered and some owner financing may be possible.

Basic Information

Category: Motor Yacht

Model Year: 2001

Year Built: 1985

Country: United States

Dimensions

LOA: 86' 0" (26.21m)

Beam: 21' 4" (6.50m)

Max Draft: 6' 0" (1.83m)

Speed, Capacities and Weight

Cruise Speed: 15 Kts. (17 MPH)

Max Speed: 18 Kts. (21 MPH)

Gross Tonnage: 96 Pounds

Water Capacity: 1900 Gallons

Fuel Capacity: 6700 Gallons

Accommodations

Total Cabins: 4

Sleeps: 8

Total Heads: 5

Crew Berths: 3

Hull and Deck Information

Hull Material: Aluminum

Engine Information

Engines: 2

Manufacturer: Detroit Diesel

Model: 12V92TAM

Engine Type: Inboard

Fuel Type: Diesel

DETAILED INFORMATION

Walkthrough

In 2001, the previous owner spent 2.7 million dollars on this vessel to make this 84' Denison into a 100' Broward. All new styling like a 2000 Broward and new everything. This vessel is a huge 4 stateroom vessel with new quarters. Great live aboard or cruising vessel. Owned for 13 years by current owner. This gorgeous yacht may be boarded via port side of aft deck or starboard side. Entertainment areas abound on this luxurious yacht. Entering the vessel via a sliding glass door from the aft deck, there is a large L-shaped seating area to starboard and electronics hidden within a large sofa table. Opposite the seating is a large flat screen TV built into the cabinetry. Stairs port side access the Master Stateroom. Moving forward to port is a large formal dining area. Further forward to port accesses double guest staterooms on the lower deck. To starboard forward of Salon is a companionway with access to Day Head, Storage Closet, Starboard access to deck, and stairs leading up to Pilothouse. Further forward is the impressive Country Style Galley with comfortable seating for 8. The VIP stateroom is accessed forward of the galley and below deck. Crew Quarters are accessed via the transom door from the swim platform.

Accommodations

There are four Owner Staterooms including a Master aft with his/her en suite, two double staterooms mid-ship both with en suite, and a VIP forward with en suite. The Crew Area includes both a double cabin and a bunk cabin separated by a laundry/kitchenette area with a half bath to port and a shower to starboard. A convenient Day Head is located on the main deck.

Aft Deck

- Granite top wet bar with sink, U-line icemaker, and refrigerator
- Curved granite stairs to flybridge
- Aft seating for 8 persons with cover
- Lazarette access in sole
- Full enclosure in great condition
- Recessed lighting
- Camera
- Port/starboard access doors
- Steps to both port and starboard down to swim platform

Salon

- Full bar aft with granite top and refrigerator
- Stairs aft leading to Master Stateroom and Engine Room

- L-shaped leather sofa
- Matching leather chair
- Huge cocktail table concealing audio/stereo system
- Fujitsu TV built in
- Round glass dining table for 6
- Large windows with blinds
- Aft sliding entrance door aft
- Recessed lighting

Electronics:

- Onkyo Integra stereo power amp
- HP6 high power speaker selection system
- Sony DVD/CD changer w/ MP3 playback
- Integra stereo
- Pioneer compact disc player
- Direct TV

Galley

- Sub-Zero 601R stainless refrigerator
- GE Profile microwave/convection
- Viking Professional full size oven with 4 burner glass cooktop
- Sub-Zero 4 drawer freezer 700BF
- Black granite countertops
- Frigidaire full size dishwasher
- Broan trash compactor
- Uline icemaker
- 18 bottle wine cooler
- Full size cabinets/drawers in light wood (maple?)
- Double stainless steel sink w/ instant hot water and purified water spouts
- In Sink Erator disposal
- Glass top table with u-shaped seating for 8
- Sharp TV
- Recessed lights
- Track lighting
- SMX controls
- 3 bar stools
- Blinds over full windows

Companionway

Forward of salon to starboard is a companionway with access to the Day head, a storage closet, stairs up to Pilothouse, and a glass door leading to deck.

Master Stateroom

- King bed with storage beneath
- Carpet
- 6 drawer dresser/countertop to port
- Sofa and dresser w/ 8 drawers to starboard
- 2 hanging full closets
- Small refrigerator in closet
- 2 nightstands
- LG flatscreen TV
- DVD player
- Recessed lights
- His and Her En Suite with granite floors and countertops. Vanity on her side. Large glass enclosed shower with bench seat
- Washer/dryer in companionway outside of Master Stateroom

VIP Stateroom

- Accessed forward of Galley down 6 steps
- Double bed
- Office desk w/ 3 drawers
- Toshiba 12" TV w/ DVD
- Direct TV receiver
- SMX controls
- Compact Disc player
- Panasonic phone
- (2) large drawer storage under bed
- Emergency egress at head of bed
- Cedar hanging closet
- En suite head with shower

Double Guest Staterooms

These matching Guest Staterooms are mid-ship accessed via stairs from the salon. Each features the following:

- Double bed
- Hanging closet

- TV
- En Suite with Shower

Crew

- 1 double stateroom with TV
- 1 bunk stateroom
- Hanging closets in both cabins
- Full size washer and dryer
- Iron board
- Counter space and storage for laundry and/or kitchen supplies with TV
- 1/2 bath to port
- Shower to starboard
- Emergency egress forward

Pilothouse

- Accessed forward of the Salon up 4 steps or from Fly bridge down 6 steps.
- ICM127 Icom VHF
- Northstar 94IX Navlog
- Naiad stabilizer controls
- Furuno color LCD sounder FCV1200L
- Robertson autopilot AP9MK3
- ACR RCL 100 electronic compass (?)
- Raytheon infrared night sight protect IR 4000 M
- Standard Horizon MD150
- Robertson RI35 MK2
- (2) VEI 12" screens
- Bow thruster controls
- Delta Vision 4 camera monitor
- Stainless wheel
- L shaped seating behind wheel - elevated with storage below
- Control panel for alarms - lights/nav lights/bilge/security
- 2nd ICOM ICM700PRO SSB Radio Telephone
- SMX controls
- Flare kit
- Extinguisher

Fly Bridge

- L-seating forward to port with 2 circular granite tables

- Wet bar with storage, refrigerator w/ ice maker, sink, 2nd ice maker, Lazyman Grill full size with 2 propane tanks concealed below.
- Radar arch
- 4 person Jacuzzi aft
- 3 person sunpad
- Marquipt davit 900 lb.
- Coffin box
- 3 bar stools
- Bench seating for 4 to starboard

Electronics:

- IC M127VHF
- Bow thruster controls
- ACR RCL 100
- Compass
- Naiad stabilizer controls
- Furuno GPS Nav
- Simrad rudder indicator
- Robertson F200
- VEI screen
- Engine controls
- Stainless steering wheel
- Additional throttle and bow thruster controls both to starboard and port side of help
- SAT 406 EPIRB
- SAT dome
- Radar

Decks

Decks are all non-skid. Aft deck is covered by outdoor carpet. Swim platform is teak. All decks and deck covering appear to be in good condition.

- Fresh water shower on swim platform
- 50 & 100 amp shore power cords and connections with cablemaster on both (1 manual and 1 automatic)
- Foredeck has 2 large sunpad areas
- Windlass

Upgrades

- All engine coolers redone.
- Engines and generators taken out and changed in 2002

- 1500 hours on generator
- Spent more than \$100,000 on the bottom of the yacht, painting both sides and all Naiads reworked

Exclusion

- Tender and Jet ski (No title)

Exclusions

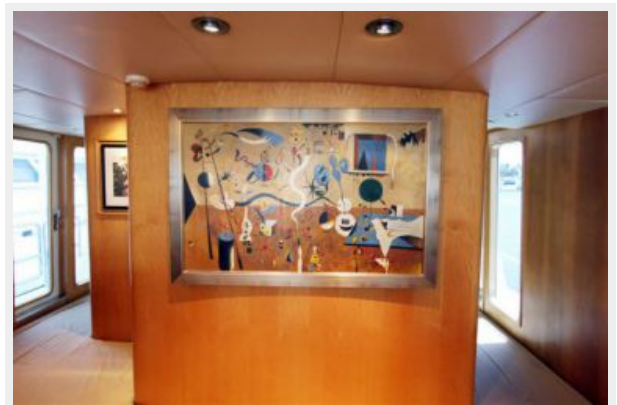
Owner's personal belongings.

Disclaimer

The Company offers the details of this vessel or yacht in good faith but cannot guarantee or warrant the accuracy of this information nor warrant the condition of the vessel. A buyer should instruct his representatives, agents, or his surveyors, to investigate such details as the buyer desires validated. This vessel or yacht is offered subject to prior sale, price change, or withdrawal without notice.

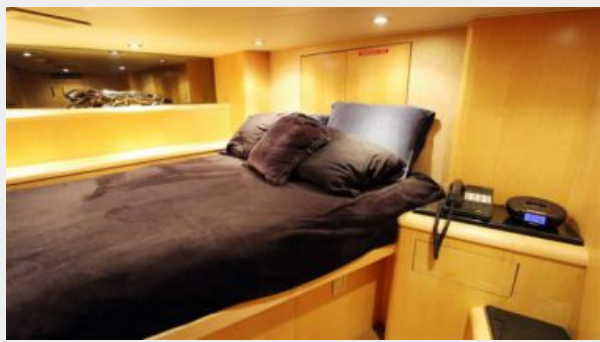
PHOTOS

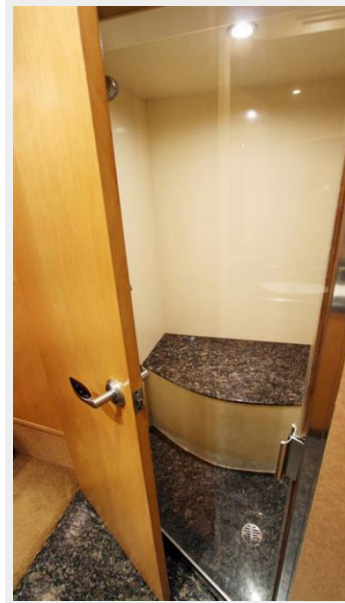






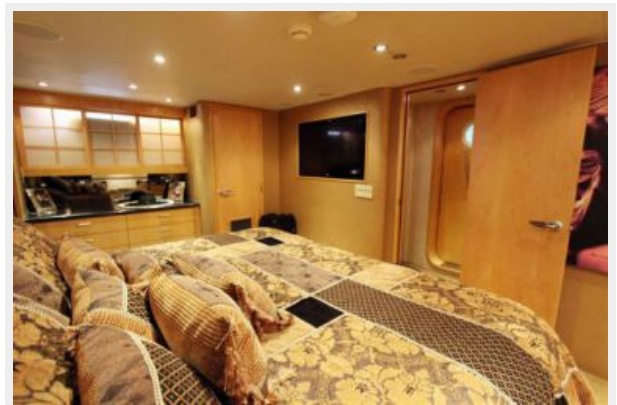
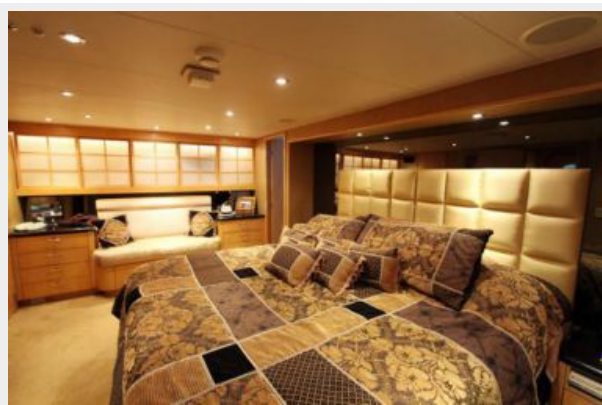




















CONTACTS

Andrey Shestakov, leading yacht broker of the sales department of Shestakov Yacht Sales Inc. Shestakov Yacht Sales Inc., the official representative of the Miami/Fort Lauderdale FL headquarters.

Contact details

Email: andrey@shestakovyachtsales.com

Web: shestakovyachtsales.com/en/

Telephones

USA: +1(954)274-4435

Office hours

Monday – Saturday: **9:00 - 21:00** EDT

Sunday: **closed**

Address



Harbour Towne Marina, 850 NE 3rd St,
STE 213, Dania, FL 33004