

TROPICAL DREAMER — CATALINA



Builder: CATALINA

Year Built: 1995

Model: Cruising Sailboat

Price: PRICE ON APPLICATION

Location: United States

LOA: 36' 0" (10.97m)

Beam: 11' 11" (3.63m)

Min Draft: 4' 6" (1.37m)

Max Draft: 4' 6" (1.37m)

Our experienced yacht broker, Andrey Shestakov, will help you choose and buy a yacht that best suits your needs **Tropical Dreamer — CATALINA** from our catalogue. Presently, at Shestakov Yacht Sales Inc., we have a wide variety of yachts available on our sale's list. We also work in close contact with all the big yacht manufacturers from all over the world.

If you would like to buy a yacht **Tropical Dreamer — CATALINA** or would like help answering any questions concerning purchasing, selling or chartering a yacht, please call **+1(954)274-4435**

TABLE OF CONTENTS

TABLE OF CONTENTS	2
SPECIFICATIONS	5
Overview	5
Basic Information	5
Dimensions	5
Speed, Capacities and Weight	5
Accommodations	5
Hull and Deck Information	6
Engine Information	6
DETAILED INFORMATION	7
36' Catalina Overview	7
36' Catalina Vessel Walkthrough	7
36' Catalina Accommodations	7
36' Catalina Salon	7
36' Catalina Galley	7
36' Catalina Dining	8
36' Catalina Master Stateroom	8
36' Catalina Guest Stateroom	8
36' Catalina Cockpit	8
36' Catalina Audio/Visual Equipment	8
36' Catalina Electronics	8
36' Catalina Electrical System	9
36' Catalina Engine/Mechanical Equipment	9
36' Catalina Deck Equipment	9
36' Catalina Sails and Rigging	10
36' Catalina Exclusions	10
36' Catalina Disclaimer	10
Exclusions	10

Disclaimer	10
PHOTOS	12
36' Catalina Port Forward Profile	12
36' Catalina Starboard Forward Profile	12
36' Catalina Underway	12
36' Catalina At Anchor	12
36' Catalina Anchor Windlass Covered	13
36' Catalina Forward Profile	13
36' Catalina Anchor Windlass	13
36' Catalina Foredeck	13
36' Catalina Foredeck Aft	13
36' Catalina Cockpit	13
36' Catalina Cockpit Forward	14
36' Catalina Cockpit Aft	14
36' Catalina Cockpit Nav Pedestal	14
36' Catalina Swim Platform	14
36' Catalina Tender Davits	14
36' Catalina Tender	14
36' Catalina Salon Forward	15
36' Catalina Salon Aft	15
36' Catalina Nav Station	15
36' Catalina Salon Settee Photo1	15
36' Catalina Salon Settee Photo2	15
36' Catalina Salon Starboard Photo1	15
36' Catalina Salon Starboard Photo2	16
36' Catalina Galley Photo1	16
36' Catalina Galley Photo2	16
36' Catalina Guest Stateroom	16
36' Catalina Master Stateroom	16

36' Catalina Head	16
36' Catalina Auxillary	17
36' Catalina Inverter	17
36' Catalina Wind Generator	17
36' Catalina Port Solar Panel	17
36' Catalina Hauled Out	18
36' Catalina Starboard Solar Panel	18
36' Catalina Sail Plan	18
36' Catalina Layout	18
CONTACTS	19
Contact details	19
Telephones	19
Office hours	19
Address	19

SPECIFICATIONS

Overview

Tropical Dreamer is a 1995 36' Catalina MK II offering a 2 stateroom layout, Universal 30 hp diesel auxiliary, wind generator and solar panels. Sellers have bought a larger boat, so they encourage offers. Price reduced!

Basic Information

Category: Cruising Sailboat

Sub Category: Sloop

Model Year: 1995

Year Built: 1995

Country: United States

Cockpit: Yes

Dimensions

LOA: 36' 0" (10.97m)

LWL: 30' 3" (9.22m)

Beam: 11' 11" (3.63m)

Min Draft: 4' 6" (1.37m)

Max Draft: 4' 6" (1.37m)

Clearance: 52' 2" (15.90m)

Speed, Capacities and Weight

Displacement: 13500 Pounds

Water Capacity: 84 Gallons

Holding Tank: 15 Gallons

Fuel Capacity: 25 Gallons

Accommodations

Total Cabins: 2

Total Berths: 4

Total Heads: 1

Hull and Deck Information

Hull Material: Fiberglass

Deck Material: Composite Fiberglass

Hull Configuration: Monohull

Engine Information

Engines: 1

Manufacturer: Yanmar

Model: 3JH4E

Engine Type: Inboard

Fuel Type: Diesel

DETAILED INFORMATION

36' Catalina Overview

Tropical Dreamer is a 1995 36' Catalina MK II offering a 2 stateroom layout, Universal 30 hp diesel auxiliary, wind generator and solar panels. Sellers have bought a larger boat, so they encourage offers. Price reduced!

36' Catalina Vessel Walkthrough

Entering the salon from the cockpit, you will find the galley port aft, settee and table port forward, master stateroom starboard aft, nav station starboard, seats and a table also to starboard and storage starboard forward. The head is port forward and the guest stateroom is forward.

36' Catalina Accommodations

Tropical Dreamer offers a master stateroom aft with a queen size berth and a guest stateroom forward with a v-berth. The head is to port just aft of the guest stateroom. The settee and hi/lo table convert into another double size berth.

36' Catalina Salon

The salon offers a nav station starboard aft, built-in seats and a table to starboard, storage starboard forward, settee with hi/lo table that converts into a berth port forward, 3 portlights, side windows, 3 overhead hatches, reading lights, shelves, storage cabinets, storage under the seating and teak & holly sole.

36' Catalina Galley

The galley is located port aft in the salon.

- Adler Barbour refrigerator and freezer
- 2-burner LPG cooktop and oven
- Samsung Classic Collection II microwave oven
- Double stainless steel sinks
- Storage cabinet
- Shelves

- Solid surface countertop

36' Catalina Dining

Dining space is available at the salon table and the cockpit folding teak table.

36' Catalina Master Stateroom

The master stateroom is aft and offers a queen size berth, 3 portlights, overhead hatch, blinds, reading lights, hanging locker, storage drawers and a teak & holly sole.

36' Catalina Guest Stateroom

The guest stateroom is forward and offers a v-berth with insert, shelves, hanging locker, storage drawers and cabinet, reading lights, overhead hatch and direct access to the head.

36' Catalina Cockpit

The cockpit offers a bimini, dodger, Edson nav pedestal, folding teak table, benchseats each side and aft, 2 aft rail seats, walk-thru transom, gas locker, non-skid deck and Force 10 stainless steel BBQ grill.

36' Catalina Audio/Visual Equipment

- Magnavox flat screen TV in the salon

36' Catalina Electronics

- Standard Horizon Intrepid + VHF at the nav station
- Autohelm Navcenter chart plotter at the nav station
- Ritchie Powerdamp magnetic compass
- Lowrance LMS-332c chart plotter in a Navpod
- Autohelm Radar
- Autohelm ST4000 autopilot
- Autohelm wind display

- Autohelm Tri-Data display

36' Catalina Electrical System

- Honda EU 2000i generator
- Freedom Model 20 2000 watt inverter with remote panel
- Heart Interface battery monitor panel
- 2 X 30 amp shore cords
- Nautilus solar system with two 130 watt Kyocera panels
- Air Breeze 200 watt wind generator with Blue Seas remote panel in the salon
- 2 X 8d batteries
- Guest battery switch
- Catalina Yachts electrical panel

36' Catalina Engine/Mechanical Equipment

- Newly installed Yanmar 3JH4E 39 hp auxiliary with approximately 1,000 hours
- Edson steering system
- Cruisair reverse cycle air conditioning/heating system with SMX control
- Jabsco manual head

36' Catalina Deck Equipment

- Anchor windlass with foot control
- Bruce 33lb anchor
- Non-skid deck
- Stainless steel stanchions with double lifelines
- Stainless steel deck hardware

- Stainless steel swim ladder
- Dock water connection aft
- Ocean Marine stainless steel tender davits

36' Catalina Sails and Rigging

- Garhauer traveler
- Schaefer roller furling
- Standard single spreader aluminum mast and boom
- 2 X Lewmar 48 CST primary winches
- 2 X Lewmar 30 CST maneuvering winches
- Mainsail
- 130% Genoa
- 110% Genoa
- Drifter

36' Catalina Exclusions

- Sellers' personal belongings

36' Catalina Disclaimer

The Company offers the details of this vessel in good faith but cannot guarantee or warrant the accuracy of this information nor warrant the condition of the vessel. A buyer should instruct his agents, or his surveyors, to investigate such details as the buyer desires validated. This vessel is offered subject to prior sale, price change, or withdrawal without notice.

Exclusions

Owner's personal belongings.

Disclaimer

The Company offers the details of this vessel or yacht in good faith but cannot guarantee or warrant the accuracy of this information nor warrant the condition of the vessel. A buyer should instruct his representatives, agents, or his surveyors, to investigate such details as the buyer desires validated. This vessel or yacht is offered subject to prior sale, price change, or withdrawal without notice.

PHOTOS

36' Catalina Port Forward Profile



36' Catalina Starboard Forward Profile



36' Catalina Underway



36' Catalina At Anchor



36' Catalina Forward Profile



36' Catalina Anchor Windlass Covered



36' Catalina Anchor Windlass



36' Catalina Foredeck



36' Catalina Foredeck Aft



36' Catalina Cockpit



36' Catalina Cockpit Forward



36' Catalina Cockpit Aft



36' Catalina Cockpit Nav Pedestal



36' Catalina Swim Platform



36' Catalina Tender Davits



36' Catalina Tender



36' Catalina Salon Forward



36' Catalina Salon Aft



36' Catalina Nav Station



36' Catalina Salon Settee Photo1



36' Catalina Salon Settee Photo2



36' Catalina Salon Starboard Photo1



36' Catalina Salon Starboard Photo2



36' Catalina Galley Photo1



36' Catalina Galley Photo2



36' Catalina Guest Stateroom



36' Catalina Master Stateroom



36' Catalina Head



36' Catalina Auxillary



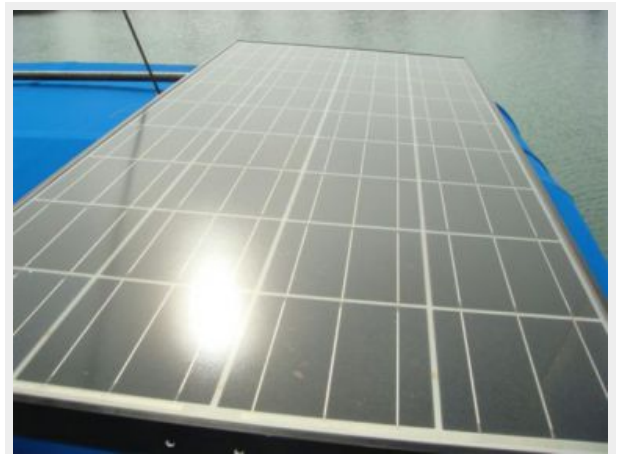
36' Catalina Inverter



36' Catalina Wind Generator



36' Catalina Port Solar Panel



36' Catalina Starboard Solar Panel



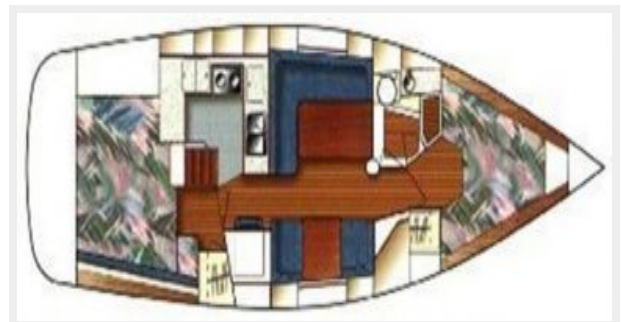
36' Catalina Hauled Out



36' Catalina Sail Plan



36' Catalina Layout



CONTACTS

Andrey Shestakov, leading yacht broker of the sales department of Shestakov Yacht Sales Inc. Shestakov Yacht Sales Inc., the official representative of the Miami/Fort Lauderdale FL headquarters.

Contact details

Email: andrey@shestakovyachtsales.com

Web: shestakovyachtsales.com/en/

Telephones

USA: +1(954)274-4435

Office hours

Monday – Saturday: **9:00 - 21:00** EDT

Sunday: **closed**

Address



Harbour Towne Marina, 850 NE 3rd St,
STE 213, Dania, FL 33004