

BELLISSIMA — ALBIN



Судостроитель: [ALBIN](#)

Год постройки: 1986

Модель: Крейсер

Цена: ЦЕНА ЯХТЫ ПО ЗАПРОСУ

Местонахождение: United States

Длина общая: 43' 0" (13.11m)

Ширина: 14' 6" (4.42m)

Макс. осадка: 6' 5" (1.96m)

Купить **Bellissima — ALBIN** а также выбрать подходящую вам яхту из нашего каталога яхт вам поможет опытный яхтенный брокер Андрей Шестаков. На сегодняшний день компания **Shestakov Yacht Sales Inc.** имеет большое количество яхт в собственном списке продаж, а также тесно сотрудничает со всеми крупными яхтенными производителями по всему миру.

Для того чтобы купить яхту **Bellissima — ALBIN** а также проконсультироваться по любому вопросу связанному с покупкой, продажей, чартером яхт позвоните по телефону **+7(918)465-66-44**.

ОГЛАВЛЕНИЕ

ОГЛАВЛЕНИЕ	2
ХАРАКТЕРИСТИКИ	3
Обзор	3
Основная информация	5
Размеры	6
Скорость, вместимость и масса	6
Размещение	6
Корпус и палуба	6
Информация о двигателе	6
ФОТОГРАФИИ	7
КОНТАКТЫ	28
Контактная информация	28
Телефоны	28
Время работы	28
Адрес	28

ХАРАКТЕРИСТИКИ

Обзор

This Albin 43 Classic has recently come out of the boatyard having had Extensive upgrading. Her owner works at the boatyard and knows these vessels intimately. This is an excellent buy to the lucky mariner that acquires her.

Stand-out Features

- * New 2015: All topsides painted with Awlgrip
- * New 2014: Bottom Paint
- * New 2014: Raymarine cSeries 127 Multifunctional
- * All Navigational Data Displayed on One Screen
- * New 2015: Raymarine Radome
- * New 2015: Cutlass Bearings
- * New 2015: Shaft/Rope Cutters
- * New 2015: Cooler Service
- * New 2015: Fuel Tanks Epoxy Coated
- * Synthetic Swim Platform

Boat Name Bellissima Dimensions LOA: 43 ft 0 in Beam: 14 ft 6 in LWL: 37 ft 11 in Maximum Draft: 4 ft 1 in Headroom: 6 ft 5 in Dry Weight: 30000 lbs Engines Engine 1: Engine Brand: Volvo Penta Year Built: 1986 Engine Model: TAMD40-B Engine Type: Inboard Engine/Fuel Type: Diesel Location: Starboard Engine Hours: 3112 Drive Type: Direct Drive Engine Power: 165 HP Engine 2: Engine Brand: Volvo Penta Year Built: 1986 Engine Model: TAMD40-B Engine Type: Inboard Engine/Fuel Type: Diesel Location: Port Engine Hours: 3104 Drive Type: Direct Drive Engine Power: 165 HP Tanks Fresh Water Tanks: 2 Stainless steel (150 Gallons) Fuel Tanks: 2 (250 Gallons) Holding Tanks: 1 Fiberglass (30 Gallons) Accommodations Number of double berths: 2 Number of cabins: 2 Number of heads: 2 Electronics TV set - Vizio 32 and Samsung 24" DVD player - X Box Log-speedometer - Raymarine cSeries 127 Multifunctional Display Depthsounder - Raymarine cSeries 127 Multifunctional Display CD player - Alpine 6 Disk Changer CHM-S620 Repeater(s) - Raymarine cSeries 127 Multifunctional Display GPS - Raymarine cSeries 127 Multifunctional Display VHF - Standard Horizon Down & ICOM Up Both with Distress Cockpit speakers - Radio Shack Individual Speaker Control Module Autopilot - Raymarine Integrated with cSeries Multifunctional Display Radar - Raymarine cSeries 127 Multifunctional Display Compass - Danforth Upper and Lower Magnetic Compasses Navigation center - Raymarine cSeries 127 Multifunctional Display Plotter - Raymarine cSeries 127 Multifunctional Display Radio - Jensen MCC 8526 Inside Equipment Electric bilge pump - Two 2000 gph Battery charger - Pro Mariner Heating - Reverse Cycle Electric head - Sealand Eco-Vac Aft Refrigerator - Norcold AC/DC Refrigerator Freezer Model DE/EV-461 Hot water - Raritan Manual bilge pump Air conditioning - Two Marine Air 12,000 BTU & 16,000 BTU Marine head - Raritan #2 Manual Forward Oven - Force 10 Electrical Equipment Generator - Westerbeke 8 KW 3918 hrs. Inverter - Heart Interface 2000 Shore power inlet - Two 30 AMP Electrical Circuit: 110V Outside Equipment/Extras Swimming ladder Outboard engine brackets - One on Tween Deck Davits - New Custom Made Electric windlass Covers Bimini Top - Fully Enclosed Flybridge/Clear Isinglass

Albin 43 Classic Trawler

Engine

* PORT: Volvo Penta 165 hp. TAMD 40-B 3104 hrs. * STBD: Volvo Penta 165 hp. TAMD 40-B 3112 hrs. * GEN: Westerbeke 8 KW Diesel 3918 hrs. * Two Racor 900 FG Fuel Filter/Water Separaters For Mains * One Racor 500 FG Fuel Filter/Water Separater For Gen. * Halon Fire Suppression System in Engine Room * Fuel Tanks Epoxy Coated

Ground Tackle

* 35 lb. CQR with 25' 3/8" BBB chain & 150' Nylon Rode * 44 lb. Danforth with 25' BBB chain & 150' Nylon Rode * Spare Danforth Anchor with 150' 5/8" Nylon Rode

Galley

* Force 10 Stainless Propane Stove with Oven * Norcold Refrigerator Freezer Dual Electric Mod. DE/EV-461 * Oster Toaster Oven * Double Stainless Steel Sink

Electronics

* New 2014 Raymarine cSeries 127 Multifunctional Display * New 2015 Raymarine 18 mi. Digital Radome * Raymarine ST6001+ Auto Pilot * Standard Horizon Spectrum VHF with Distress * ICOM VHF Mod. IC-M422 with Distress * Jensen Stereo Receiver Mod. MCC 8526 * Alpine 6 Disk CD Changer Mod. CHM-S620 * Alpine CD Changer Mod. CHM-S655RF * Radio Shack Individual Speaker Controller * Vizio 32" Flat Panel HDTV * Samsung 24" Flat Panel HDTV** TERK HDTV Video receiver

Electrical

* Westerbeke 8 KW Diesel Generator with 3918 hrs. * New 2015 Start Batteries: 4 DEKA 6 volt * New 2015 House Batteries: 8 DEKA 6 volt * Pro Mariner 35 AMP Commercial Duty Battery Charger * Heart Interface 2000 Inverter * 110 VAC Electrical Breaker Panel * 12 VDC Electrical Breaker Panel * Battery Switch * Two 30 AMP Shore power Outlets and Cords

Mechanical

* AC: Marine Air 16,000 BTU with Reverse Cycle Heat * AC: Marine Air 12,000 BTU with Reverse Cycle Heat * Jabsco 3.8 gpm On Demand Fresh Water Pump * Shur Flo Blaster Washdown Pump * OmniFilter Whole House Potable Water Filter * Raritan Dual Source Hot Water Heater * Tank Monitor: Tank Watch 3 * Bilge Pumps: Two 2000 gph

Walkthrough

Viewing this albin 43 for the first time was quite a pleasant surprise. With her new Awlgrip paint professionally applied, this Albin shined. Noted was the clear Isinglass in the full Flybridge enclosure and the shipshape condition of everything aboard. Stepping aboard one notices that all of the Teak decks have been removed and then the decks were professionally refinished. This job was well executed and she appears to have been manufactured this way. All Teak trim has been prepped and finished with Awlgrip with the exception of the handrails. These were finished with Sikken's Cetol, quite beautiful and still tacky to the touch. Plenty of room to navigate around on the sidedecks with a roomy bow area for anchoring. Here is an extra wide Bow Pulpit to accommodate Two anchors backed by a rather large Anchor Windlass. There are two sliding doors on either side of the house for egress into the Salon. The stern shows a new custom Dinghy davit that is very robust. Two in deck fish boxes are here and some pole holders. Stainless steel rails give plenty of support up to the Flybridge, which is newly painted and quite large. Here is plenty of seating and the Flybridge control console. Heading in through one of the Teak Salon doors is a neat and orderly Salon with Teak trim throughout. The entire vessel has fresh and pleasant Aroma. The Salon sole is Teak and Holley in very good condition.

There is an "L" shaped settee here with a fold out dining table to starboard. Across the way to port is an Ekornes recliner and a 32" Vizio flat panel TV. There is a helm station just inside the starboard Salon door. Forward and down is the galley to port with a head to starboard. The galley is well designed and sports a Force 10 propane stove with oven, double stainless sink and Norcold refrigerator freezer. The forward head has a manual pump toilet with sink and can be used for showering. The forward Stateroom has a double berth with hanging locker, plenty of drawers and storage. Up and back to the Master Stateroom is a Queen bed where a custom headboard was added with built in reading lights. Rows of cabinetry line either side with a large hanging locker. There is a 24" Samsung flat panel TV here as well. The En Suite head is to starboard and large, with a tub type shower, sink and Eco Vac toilet.

Brokers Observation

This vessel was a pleasure to view. Very clean and orderly with a lot of very expensive work having been performed. Many of the problems associated with these Trawlers has been addressed, such as decks and fuel tanks. The vessel is priced at a bargain with her excellent condition taken into consideration. She probably will not last very long on the open market, representing a true opportunity.

Основная информация

Тип судна: Крейсер

Модельный год: 1986

Год постройки: 1986

Страна: United States

Открытая палуба мостика: Да

Размеры

Длина общая: 43' 0" (13.11m)

Длина по ватерлинии: 37' 11" (11.56m)

Ширина: 14' 6" (4.42m)

Макс. осадка: 6' 5" (1.96m)

Скорость, вместимость и масса

Водоизмещение: 30000 Pounds

Вместимость воды: 150 Gallons

Вместимость сточного бака: 30 Gallons

Объем топливного бака: 250 Gallons

Размещение

Всего кают: 2

Всего коек: 2

Всего ком. состава: 2

Корпус и палуба

Материал корпуса: Fiberglass

Отделка корпуса: Stainless Steel

Информация о двигателе

Двигатели: 2

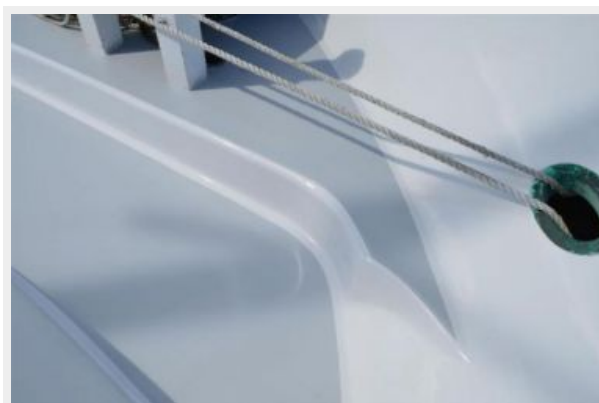
Производитель: Volvo Penta

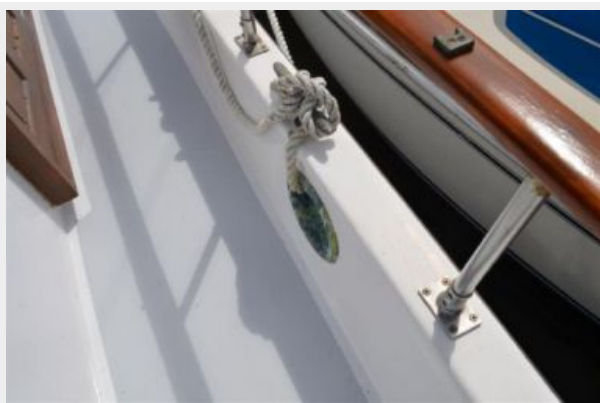
Модель: TAMD40-B

Тип двигателя: Inboard

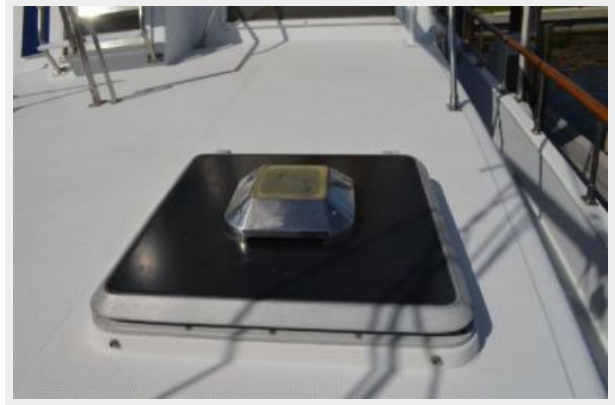
Тип топлива: Diesel

ФОТОГРАФИИ











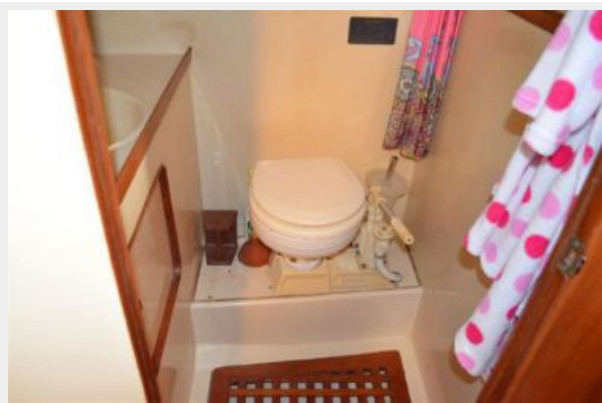


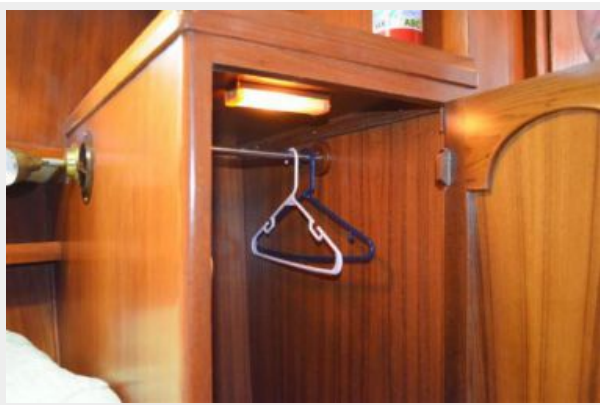






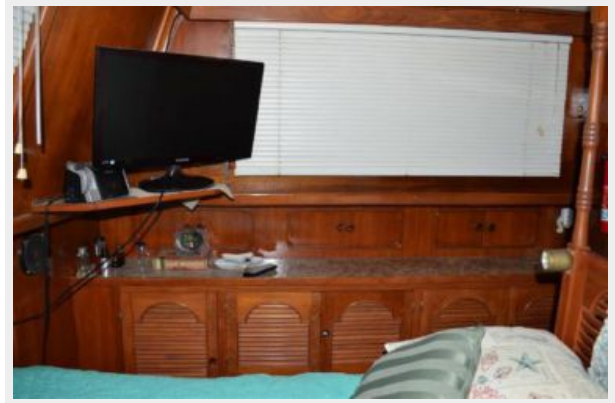


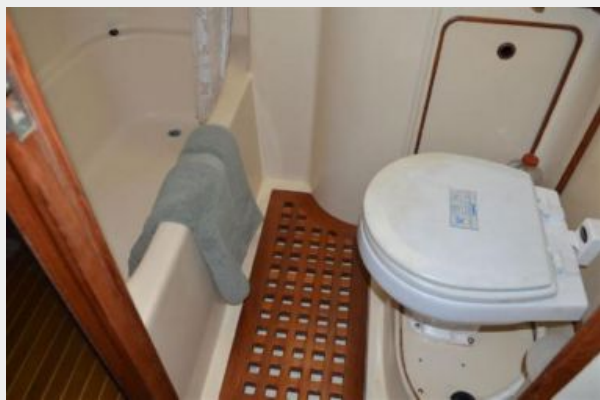


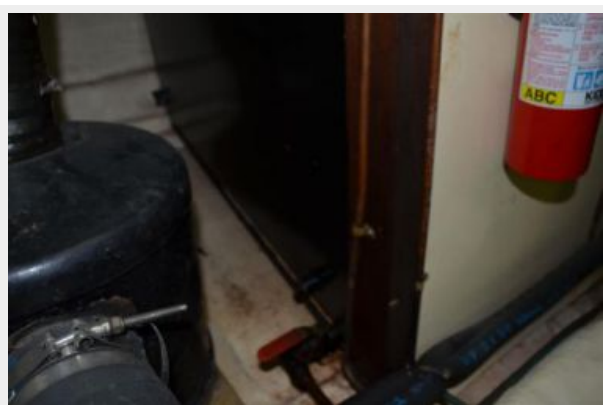


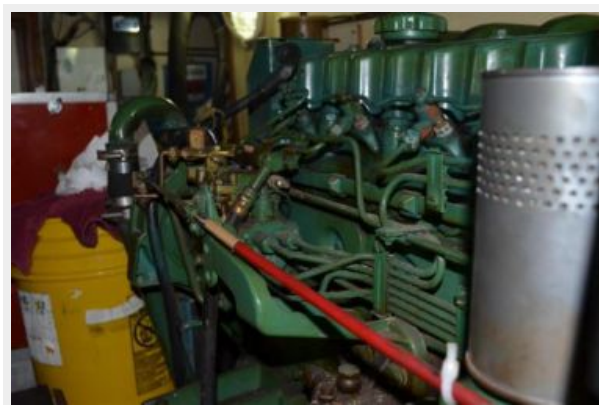


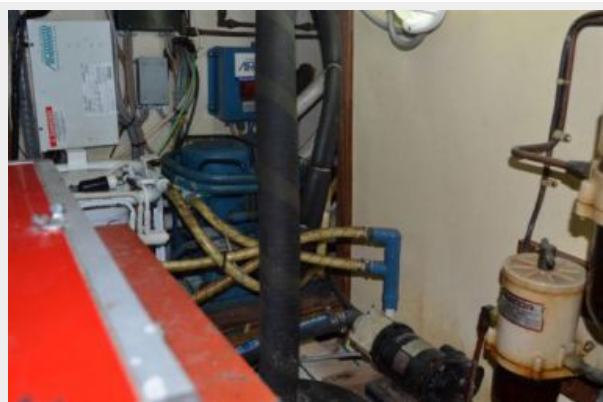




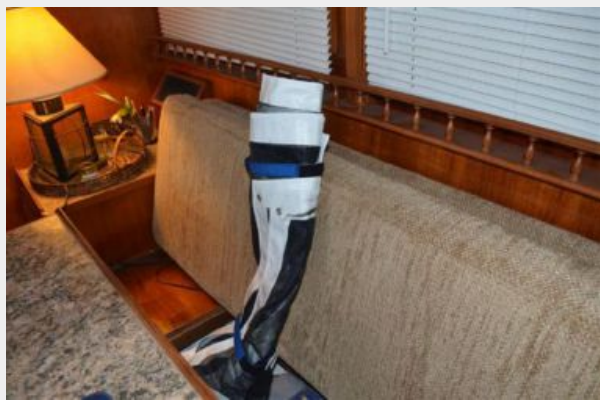












КОНТАКТЫ

Андрей Шестаков (Andrey Shestakov) – ведущий яхтенный брокер отдела продаж яхт и судов компании Shestakov Yacht Sales Inc. Официальный представитель Shestakov Yacht Sales Inc. для русскоговорящих клиентов в центральном офисе компании в Майами/Форт Лодердейл/Флорида/США.

Контактная информация

Email: andrey@shestakovyachtsales.com

Web: shestakovyachtsales.com

Телефоны

Краснодарский край: **+7(918)465-66-44**

США, Майами, Флорида: **+1(954)274-4435**

Время работы

Понедельник – Суббота: **9:00 - 21:00**
EDT

Воскресенье: **Закрито**

Адрес



Harbour Towne Marina, 850 NE 3rd St,
STE 213, Dania, FL 33004