

SERQUE — CUSTOM YACHT



Builder: CUSTOM YACHT

Year Built: 2009

Model: Motor Yacht

Price: PRICE ON APPLICATION

Location: United States

LOA: 133' 0" (40.54m)

Beam: 23' 4" (7.11m)

Max Draft: 7' 7" (2.31m)

Cruise Speed: 12 Kts. (14 MPH)

Max Speed: 20 Kts. (23 MPH)

Our experienced yacht broker, Andrey Shestakov, will help you choose and buy a yacht that best suits your needs **SERQUE — CUSTOM YACHT** from our catalogue. Presently, at Shestakov Yacht Sales Inc., we have a wide variety of yachts available on our sale's list. We also work in close contact with all the big yacht manufacturers from all over the world.

If you would like to buy a yacht **SERQUE — CUSTOM YACHT** or would like help answering any questions concerning purchasing, selling or chartering a yacht, please call **+1(954)274-4435**

TABLE OF CONTENTS

TABLE OF CONTENTS	2
SPECIFICATIONS	3
Basic Information	3
Dimensions	3
Speed, Capacities and Weight	3
Accommodations	3
Hull and Deck Information	3
Engine Information	4
DETAILED INFORMATION	5
CONSTRUCTION	5
DIMENSIONS	5
MACHINERY	5
COMMUNICATION, NAVIGATION & ENTERTAINMENT SYSTEMS	6
GALLEY & LAUNDRY EQUIPMENT	7
TENDERS & TOYS	8
DECK EQUIPMENT	8
SECURITY, FIRE FIGHTING & SAFETY EQUIPMENT	8
ACCOMODATIONS	9
COMMENTS	10
Exclusions	10
Disclaimer	10
PHOTOS	11
CONTACTS	14
Contact details	14
Telephones	14
Office hours	14
Address	14

SPECIFICATIONS

Basic Information

Category: Motor Yacht	Model Year: 2009
Year Built: 2009	Country: United States

Dimensions

LOA: 133' 0" (40.54m)	LWL: 116' 0" (35.36m)
Beam: 23' 4" (7.11m)	Max Draft: 7' 7" (2.31m)

Speed, Capacities and Weight

Cruise Speed: 12 Kts. (14 MPH)	Cruise Speed Range: 3000
Max Speed: 20 Kts. (23 MPH)	Gross Tonnage: 240 Pounds
Water Capacity: 1600 Gallons	Fuel Capacity: 9033 Gallons

Accommodations

Total Cabins: 6	Sleeps: 12
Crew Cabin: 4	Crew Sleeps: 8

Hull and Deck Information

Hull Material: Aluminum	Exterior Designer: David L. Blount & Associates
Interior Designer: Pavlik Yacht Design	

Engine Information

Engines: 2

Manufacturer: Caterpillar

Model: C32 ACERT

Engine Type: Inboard

Fuel Type: Diesel

DETAILED INFORMATION

CONSTRUCTION

SERQUE is a true custom built motor yacht, delivered in 2009 by Custom-Splendor Yachts for a very demanding “No Expense Spared” Owner, under the guidance of the naval architecture of Donald L. Blount and the interior design of Pavlik Yacht Design.

DIMENSIONS

General

Length Overall (L.O.A.):	133.00 feet	(40.50 meters)
Length at Waterline (L.W.L.):	116.00 feet	(35.36 meters)
Beam (molded):	23.33 feet	(7.10 meters)
Draft (loaded):	7.58 feet	(2.30 meters)
Tonnage:	240 Gross tons	

Capacities

Fuel Capacity:	9,033 US Gallons (34,189 liters)	
Water Capacity:	1,600 US Gallons (6,056 liters)	
Lube Oil:	150 US Gallons	(568 liters)
Waste Oil:	150 US Gallons	(568 liters)

Speed

Maximum:	20.0 knots
Cruising:	12.0 knots

MACHINERY

Main Engines

Engine Type:	(2) CAT C32 Acert, @ 1,800Hp each (CAT warranty in effect until 9/30/18)
--------------	--

Gearboxes for Main Engines:	(2) ZF 3050 Series Reduction Ration 2.77:1
-----------------------------	--

Drive:	Propeller
--------	-----------

Generators & Electricity

Output:	120/208VAC, 60hz
Generators:	(2) ONAN 99kW generators
Shore Power:	Atlas ShorPOWER SPA-II
Batteries:	12VDC (12) in engine room

(6) in pilot house

Air Conditioning

Type: Air Handlers w/ Chilled Water System and Main 30 ton Chiller Plant for Accommodation Area. Auxiliary 6 ton plant for Flybridge.

Other Machinery

Watermakers: Aquamatic 1800 GPDS UV Sterilizer
 Trim Tabs/Stabilizers: NAIAD Fin Stabilizer HPU 30hp Manifold
 Bow Thruster: NAIAD Thruster Control Simon system and panel
 NAIAD PTO Hydraulic Pump Bilge
 Steering System: Jastram Hydraulic System, with backup Manual System
 Fuel Separator & Filtration: Racor Fuel Filter
 Oberdorfer 208vac Marine Sanitation device
 Sewage System: Headhunter / Tidal Wave
 Fresh Water System: Water Maker Aqua Whisper 1800GPDS

COMMUNICATION, NAVIGATION & ENTERTAINMENT SYSTEMS

Communication Systems

SATcom: Intellian V80 VSAT
 Telephone/ Intercom System: Panasonic KX-TDA 100 (33 Extensions)
 VHF: (2) Icom M604 with Loudhailers
 (1) Air band
 Cellular Phone System: Fixed Tellular Cell phone (AT&T service)
 (2) Digital cell phone Repeater systems

Navigation Systems

Radar: Furuno Navnet VX2 25kw
 Gyrocompass: Anschutz Std 22
 Magnetic Compass: ComNav
 Auto Pilot: Simrad AP 50
 Depth Sounder: Furuno
 GPS: RD30 Instrument display (GPS) with BBWGPS antenna
 Weather FAX: XM Weather –WEATHER WORX module
 Airmar Ultrasonic Weather Station (with internal GPS)
 Ships Computer: Nobeltec / PC

Laser Plotter:	Nobeltec Admiral
Wind/Speed Log:	Simrad
Entertainment System	Video Equipment
TV's:	50" Samsung LED TV (Master) 42" Samsung LED TV (Dining) (3) 40" Samsung LED TV (Flybridge) (4) 32" Samsung LED TV (VIP, Guest S/R #3 & 4, Aft Deck) (2) 26" Samsung LED TV (Guest S/R #1 & #5)
Other:	Sony Blu-Ray (Master) (2) Kaleidescape KPlayer 6000 (Master & Flybridge) (5) Crestron TPS-6x Touch panel Kaleidescape Mini Player(VIP, Guest S/R # 2, 3, 4 & 5) DirectTV Receivers throughout Xbox One game console (Guest S/R #5)
Audio Equipment	
Stereos:	Rotel Audio Equipment throughout (2) Bowers and Wilkins CCM818 speakers (Master & Dining) James Loudspeakers w/ Subwoofer (Flybridge) (4) Bowers and Wilkins CCM65 speakers (VIP, Guest S/R #3, 4 & 5) ADA Suite 7.1HD surround sound processor (Master) Escient iPod docks throughout

GALLEY & LAUNDRY EQUIPMENT

Main Galley Equipment

Cooking Equipment:	GE Monogram 27" Built-in Electric Double Oven Viking Professional Range Hood and Cooktop GE Monogram Microwave Oven
Refrigeration/Freezer:	(3) GE Monogram Refrigerators with Double Drawers GE Monogram Refrigerator Subzero Refrigerator/Freezer Combo Subzero Refrigerator/Freezer Combo DoubleDrawers Subzero Wine Cooler
Dishwasher:	Fisher & Paykel Dual Drawer Dishwasher
Crew Galley/Mess Equipment	

Cooking Equipment:	GE Profile Microwave Oven
Refrigeration/Freezer:	GE Monogram Refrigerator
Other:	GE 25LB Ice maker
Laundry Equipment	
Main Laundry Equipment:	(2) Miele Professional Washer Miele Professional Dryer

TENDERS & TOYS

37' Intrepid
18' Yacht tender
(2) Yamaha waverunners

DECK EQUIPMENT

Anchor Windlass System:	(2) Muir Hydraulic Windlasses
Aft Warping Capstans:	(2) Muir Hydraulic Capstans
Anchor:	(2) Stainless Steel HHP Anchors
Anchor Chain:	Over 300' of G4 ISO Windlass Chain Each Side
Boat Crane and Davits:	Steelhead CTS1200
Passerelle:	Opacmare
Swimming Platform:	Yes

SECURITY, FIRE FIGHTING & SAFETY EQUIPMENT

Security Equipment

CCTV System:	Yes, DiVis
Cameras:	16
Monitors:	Accessed through Crestron System

Fire Fighting Equipment

Fire Control System:	Simon
Fire Extinguishers:	Throughout Vessel / Inspection Completed 7/15
Alarms:	Smoke and Heat Detectors Throughout

Safety Equipment

Life Rafts:	(4) Givens 12 Man Liferaft
Life Rings:	4
EPIRBs:	ACR 2742 Global-Fix

Flares:	Onboard as per applicable Flag Requirements
Medical Equipment:	Onboard as per applicable Flag Requirements

ACCOMODATIONS

GENERAL

Superior mahogany supple wood inlays, lush fabrics and advanced technology create a five-star experience on the seas. SERQUE's unique design incorporates spacious walkways and skillful, minimalist craftsmanship with inconspicuously positioned electrical outlets, kitchen appliances, telephones and remote controls, all built within drawers and hidden from plain sight.

Six luxurious staterooms built from custom, mahogany sapele wood comfortably accommodate twelve guests. Named after the Bahamian Islands, the Pavlik Yacht-designed interiors feature Botticino stone and mosaic borders, Italian high-gloss furniture, and luxurious silk and chenille fabrics.

Each room is equipped with individual climate controls, flat - screen LED televisions and access to the Kaleidescape network of movie and music servers via Crestron remote controls. Create your own playlist with Ipod docks in every stateroom.

Enjoy the comforts aboard SERQUE with one of the 22 flat screen LED television throughout the yacht, each equipped with satellite TV and Kaleidescape movie servers. Set the mood with Rotel audio equipment and Bowers Wilkins speakers and Ipod docks throughout the boat.

OWNER

Master Stateroom-“CAT KAY”

The master stateroom, located on the main Deck forward, features a center line Custom California King Berth, with His and Hers heads, complete with steam shower and Jacuzzi.

GUESTS

VIP Stateroom- “ANDROS” The VIP Stateroom is located forward on the lower deck and features a raised platform king berth and a large head complete with tub and shower.

Guest Stateroom #2- “EXUMA” Guest stateroom #2 is located portside forward on the lower deck features a full size berth, together with a fold down Pullman berth and private head en-suite.

Guest Stateroom #3 & 4- “FREEPORT & NASSAU” Each of these guest staterooms is located aft on the lower deck and feature king berths with private head en-suite.

Guest Stateroom #5- “BIMINI” Guest stateroom #5 is located portside amidships on the lower deck and features two twin berths plus pullman berth and private head en-suite.

CREW

There are crew accommodations for 8 in 4 cabins, each with private head and shower.

COMMENTS

SERQUE is the ultimate custom yacht, featuring state-of-the-art systems, equipment, and machinery. SERQUE features luxurious accommodations for 12 guests with décor by Pavlik Yacht Design and complemented by woodwork handcrafted by Genesis Yacht Line of Italy. SERQUE is truly a one-of-a-kind yacht.

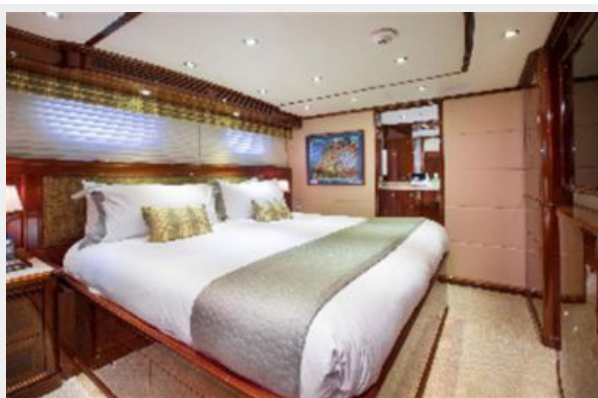
Exclusions

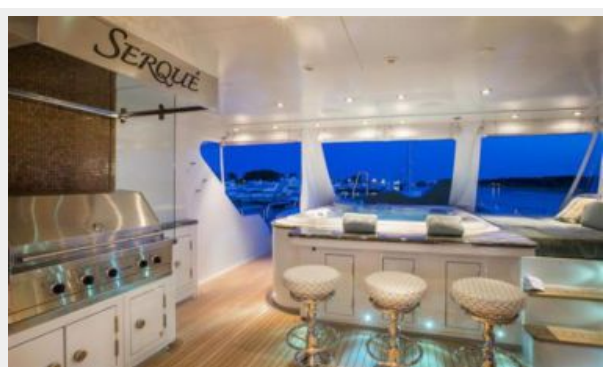
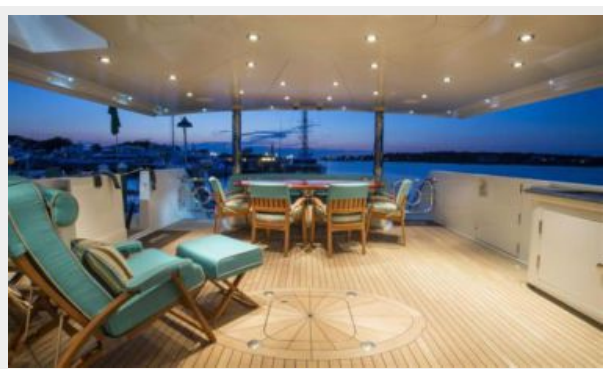
Owner's personal belongings.

Disclaimer

The Company offers the details of this vessel or yacht in good faith but cannot guarantee or warrant the accuracy of this information nor warrant the condition of the vessel. A buyer should instruct his representatives, agents, or his surveyors, to investigate such details as the buyer desires validated. This vessel or yacht is offered subject to prior sale, price change, or withdrawal without notice.

PHOTOS







SERQUE 133' (40.54m) Custom-Splendor Motoryacht 2009

CONTACTS

Andrey Shestakov, leading yacht broker of the sales department of Shestakov Yacht Sales Inc. Shestakov Yacht Sales Inc., the official representative of the Miami/Fort Lauderdale FL headquarters.

Contact details

Email:
andrey@shestakovyachtsales.com

Web: shestakovyachtsales.com/en/

Telephones

USA: **+1(954)274-4435**

Office hours

Monday – Saturday: **9:00 - 21:00 EDT**

Sunday: **closed**

Address



Harbour Towne Marina, 850 NE 3rd St,
STE 213, Dania, FL 33004