

## SERQUE — CUSTOM YACHT



**Судостроитель:** CUSTOM YACHT

**Год постройки:** 2009

**Модель:** Моторная яхта

**Цена:** **ЦЕНА ЯХТЫ ПО ЗАПРОСУ**

**Местонахождение:** United States

**Длина общая:** 133' 0" (40.54m)

**Ширина:** 23' 4" (7.11m)

**Макс. осадка:** 7' 7" (2.31m)

**Крейс. скорость:** 12 Kts. (14 MPH)

**Макс. скорость:** 20 Kts. (23 MPH)

Купить **SERQUE — CUSTOM YACHT** а также выбрать подходящую вам яхту из нашего каталога яхт вам поможет опытный яхтенный брокер Андрей Шестаков. На сегодняшний день компания **Shestakov Yacht Sales Inc.** имеет большое количество яхт в собственном списке продаж, а также тесно сотрудничает со всеми крупными яхтенными производителями по всему миру.

Для того чтобы купить яхту **SERQUE — CUSTOM YACHT** а также проконсультироваться по любому вопросу связанному с покупкой, продажей, чартером яхт позвоните по телефону **+7(918)465-66-44**.

# ОГЛАВЛЕНИЕ

ОГЛАВЛЕНИЕ	2
ХАРАКТЕРИСТИКИ	3
Основная информация	3
Размеры	3
Скорость, вместимость и масса	3
Размещение	3
Корпус и палуба	3
Информация о двигателе	4
ПОДРОБНОЕ ОПИСАНИЕ	5
CONSTRUCTION	5
DIMENSIONS	5
MACHINERY	5
COMMUNICATION, NAVIGATION & ENTERTAINMENT SYSTEMS	6
GALLEY & LAUNDRY EQUIPMENT	7
TENDERS & TOYS	8
DECK EQUIPMENT	8
SECURITY, FIRE FIGHTING & SAFETY EQUIPMENT	8
ACCOMODATIONS	9
COMMENTS	10
Исключения	10
Отказ от ответственности	10
ФОТОГРАФИИ	11
КОНТАКТЫ	14
Контактная информация	14
Телефоны	14
Время работы	14
Адрес	14

# ХАРАКТЕРИСТИКИ

## Основная информация

Тип судна: Моторная яхта

Модельный год: 2009

Год постройки: 2009

Страна: United States

## Размеры

Длина общая: 133' 0" (40.54m)

Длина по ватерлинии: 116' 0" (35.36m)

Ширина: 23' 4" (7.11m)

Макс. осадка: 7' 7" (2.31m)

## Скорость, вместимость и масса

Крейс. скорость: 12 Kts. (14 MPH)

Дальность на крейсерской скорости:  
3000

Макс. скорость: 20 Kts. (23 MPH)

Чистый вес: 240 Pounds

Вместимость воды: 1600 Gallons

Объем топливного бака: 9033 Gallons

## Размещение

Всего кают: 6

Спальные места: 12

Каюты экипажа: 4

Спальных мест экипажа: 8

## Корпус и палуба

Материал корпуса: Aluminum

Дизайнер экстерьера: David L. Blount &  
Associates

Дизайнер интерьера: Pavlik Yacht Design

## Информация о двигателе

---

**Двигатели:** 2

**Производитель:** Caterpillar

**Модель:** C32 ACERT

**Тип двигателя:** Inboard

**Тип топлива:** Diesel

# ПОДРОБНОЕ ОПИСАНИЕ

## CONSTRUCTION

SERQUE is a true custom built motor yacht, delivered in 2009 by Custom-Splendor Yachts for a very demanding “No Expense Spared” Owner, under the guidance of the naval architecture of Donald L. Blount and the interior design of Pavlik Yacht Design.

## DIMENSIONS

### General

Length Overall (L.O.A.):	133.00 feet	(40.50 meters)
Length at Waterline (L.W.L.):	116.00 feet	(35.36 meters)
Beam (molded):	23.33 feet	( 7.10 meters)
Draft (loaded):	7.58 feet	( 2.30 meters)
Tonnage:	240 Gross tons	

### Capacities

Fuel Capacity:	9,033 US Gallons (34,189 liters)	
Water Capacity:	1,600 US Gallons ( 6,056 liters)	
Lube Oil:	150 US Gallons	( 568 liters)
Waste Oil:	150 US Gallons	( 568 liters)

### Speed

Maximum:	20.0 knots
Cruising:	12.0 knots

## MACHINERY

### Main Engines

Engine Type:	(2) CAT C32 Acert, @ 1,800Hp each (CAT warranty in effect until 9/30/18)
--------------	--

Gearboxes for Main Engines:	(2) ZF 3050 Series Reduction Ration 2.77:1
-----------------------------	--

Drive:	Propeller
--------	-----------

### Generators & Electricity

Output:	120/208VAC, 60hz
Generators:	(2) ONAN 99kW generators
Shore Power:	Atlas ShorPOWER SPA-II
Batteries:	12VDC (12) in engine room

(6) in pilot house

## Air Conditioning

Type: Air Handlers w/ Chilled Water System and Main 30 ton Chiller Plant for Accommodation Area. Auxiliary 6 ton plant for Flybridge.

## Other Machinery

Watermakers: Aquamatic 1800 GPDS UV Sterilizer  
 Trim Tabs/Stabilizers: NAIAD Fin Stabilizer HPU 30hp Manifold  
 Bow Thruster: NAIAD Thruster Control Simon system and panel  
 NAIAD PTO Hydraulic Pump Bilge  
 Steering System: Jastram Hydraulic System, with backup Manual System  
 Fuel Separator & Filtration: Racor Fuel Filter  
 Oberdorfer 208vac Marine Sanitation device  
 Sewage System: Headhunter / Tidal Wave  
 Fresh Water System: Water Maker Aqua Whisper 1800GPDS

## COMMUNICATION, NAVIGATION & ENTERTAINMENT SYSTEMS

## Communication Systems

SATcom: Intellian V80 VSAT  
 Telephone/ Intercom System: Panasonic KX-TDA 100 (33 Extensions)  
 VHF: (2) Icom M604 with Loudhailers  
 (1) Air band  
 Cellular Phone System: Fixed Tellular Cell phone (AT&T service)  
 (2) Digital cell phone Repeater systems

## Navigation Systems

Radar: Furuno Navnet VX2 25kw  
 Gyrocompass: Anschutz Std 22  
 Magnetic Compass: ComNav  
 Auto Pilot: Simrad AP 50  
 Depth Sounder: Furuno  
 GPS: RD30 Instrument display (GPS) with BBWGPS antenna  
 Weather FAX: XM Weather –WEATHER WORX module  
 Airmar Ultrasonic Weather Station (with internal GPS)  
 Ships Computer: Nobeltec / PC

Laser Plotter:	Nobeltec Admiral
Wind/Speed Log:	Simrad
Entertainment System	Video Equipment
TV's:	50" Samsung LED TV (Master) 42" Samsung LED TV (Dining) (3) 40" Samsung LED TV (Flybridge) (4) 32" Samsung LED TV (VIP, Guest S/R #3 & 4, Aft Deck) (2) 26" Samsung LED TV (Guest S/R #1 & #5)
Other:	Sony Blu-Ray (Master)  (2) Kaleidescape KPlayer 6000 (Master & Flybridge) (5) Crestron TPS-6x Touch panel Kaleidescape Mini Player(VIP, Guest S/R # 2, 3, 4 & 5) DirectTV Receivers throughout Xbox One game console (Guest S/R #5)
Audio Equipment	
Stereos:	Rotel Audio Equipment throughout  (2) Bowers and Wilkins CCM818 speakers (Master & Dining) James Loudspeakers w/ Subwoofer (Flybridge) (4) Bowers and Wilkins CCM65 speakers (VIP, Guest S/R #3, 4 & 5) ADA Suite 7.1HD surround sound processor (Master) Escient iPod docks throughout

## GALLEY & LAUNDRY EQUIPMENT

### Main Galley Equipment

Cooking Equipment:	GE Monogram 27" Built-in Electric Double Oven Viking Professional Range Hood and Cooktop GE Monogram Microwave Oven
Refrigeration/Freezer:	(3) GE Monogram Refrigerators with Double Drawers GE Monogram Refrigerator Subzero Refrigerator/Freezer Combo Subzero Refrigerator/Freezer Combo DoubleDrawers Subzero Wine Cooler
Dishwasher:	Fisher & Paykel Dual Drawer Dishwasher
Crew Galley/Mess Equipment	

Cooking Equipment:	GE Profile Microwave Oven
Refrigeration/Freezer:	GE Monogram Refrigerator
Other:	GE 25LB Icemaker
Laundry Equipment	
Main Laundry Equipment:	(2) Miele Professional Washer Miele Professional Dryer

## TENDERS & TOYS

---

37' Intrepid  
 18' Yacht tender  
 (2) Yamaha waverunners

## DECK EQUIPMENT

---

Anchor Windlass System:	(2) Muir Hydraulic Windlasses
Aft Warping Capstans:	(2) Muir Hydraulic Capstans
Anchors:	(2) Stainless Steel HHP Anchors
Anchor Chain:	Over 300' of G4 ISO Windlass Chain Each Side
Boat Crane and Davits:	Steelhead CTS1200
Passerelle:	Opacmare
Swimming Platform:	Yes

## SECURITY, FIRE FIGHTING & SAFETY EQUIPMENT

---

### Security Equipment

CCTV System:	Yes, DiVis
Cameras:	16
Monitors:	Accessed through Crestron System

### Fire Fighting Equipment

Fire Control System:	Simon
Fire Extinguishers:	Throughout Vessel / Inspection Completed 7/15
Alarms:	Smoke and Heat Detectors Throughout

### Safety Equipment

Life Rafts:	(4) Givens 12 Man Liferaft
Life Rings:	4
EPIRBs:	ACR 2742 Global-Fix



Flares:	Onboard as per applicable Flag Requirements
Medical Equipment:	Onboard as per applicable Flag Requirements

## ACCOMODATIONS

---

### GENERAL

Superior mahogany supple wood inlays, lush fabrics and advanced technology create a five-star experience on the seas. SERQUE's unique design incorporates spacious walkways and skillful, minimalist craftsmanship with inconspicuously positioned electrical outlets, kitchen appliances, telephones and remote controls, all built within drawers and hidden from plain sight.

Six luxurious staterooms built from custom, mahogany sapele wood comfortably accommodate twelve guests. Named after the Bahamian Islands, the Pavlik Yacht-designed interiors feature Botticino stone and mosaic borders, Italian high-gloss furniture, and luxurious silk and chenille fabrics.

Each room is equipped with individual climate controls, flat - screen LED televisions and access to the Kaleidescape network of movie and music servers via Crestron remote controls. Create your own playlist with Ipod docks in every stateroom.

Enjoy the comforts aboard SERQUE with one of the 22 flat screen LED television throughout the yacht, each equipped with satellite TV and Kaleidescape movie servers. Set the mood with Rotel audio equipment and Bowers Wilkins speakers and Ipod docks throughout the boat.

### OWNER

#### **Master Stateroom-“CAT KAY”**

The master stateroom, located on the main Deck forward, features a center line Custom California King Berth, with His and Hers heads, complete with steam shower and Jacuzzi.

### GUESTS

**VIP Stateroom- “ANDROS”** The VIP Stateroom is located forward on the lower deck and features a raised platform king berth and a large head complete with tub and shower.

**Guest Stateroom #2- “EXUMA”** Guest stateroom #2 is located portside forward on the lower deck features a full size berth, together with a fold down Pullman berth and private head en-suite.

**Guest Stateroom #3 & 4- “FREEPORT & NASSAU”** Each of these guest staterooms is located aft on the lower deck and feature king berths with private head en-suite.

**Guest Stateroom #5- “BIMINI”** Guest stateroom #5 is located portside amidships on the lower deck and features two twin berths plus pullman berth and private head en-suite.

## CREW

There are crew accommodations for 8 in 4 cabins, each with private head and shower.

## COMMENTS

---

SERQUE is the ultimate custom yacht, featuring state-of-the-art systems, equipment, and machinery. SERQUE features luxurious accommodations for 12 guests with décor by Pavlik Yacht Design and complemented by woodwork handcrafted by Genesis Yacht Line of Italy. SERQUE is truly a one-of-a-kind yacht.

## Исключения

---

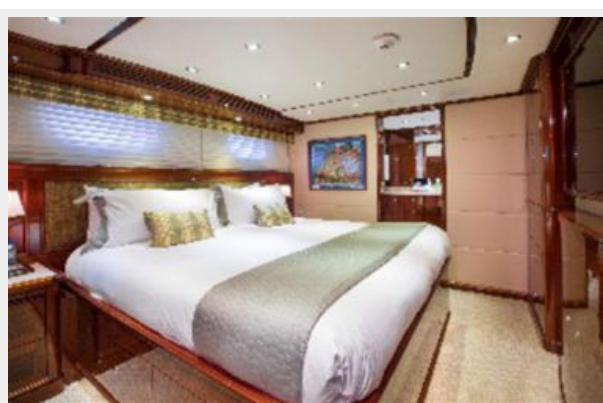
При продаже яхты исключаются личные вещи владельца.

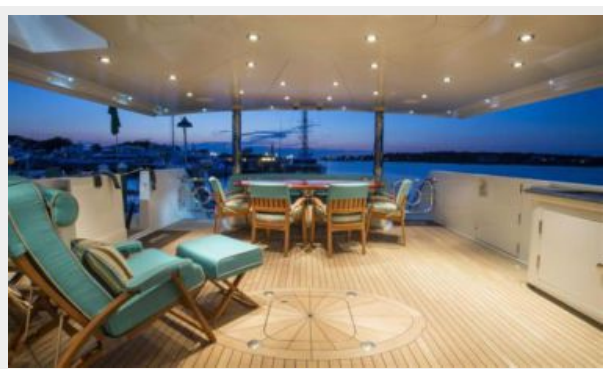
## Отказ от ответственности

---

Компания предоставляет описание судна или яхты добросовестно, но не может гарантировать точность этой информации, а также не ручается за техническое состояние. Покупатель должен проинструктировать своих агентов или оценщиков исследовать представленную информацию более подробно, по собственному желанию. Продажа судна или яхты, изменение цены или снятие с продажи будет происходить без предварительного уведомления.

# ФОТОГРАФИИ







SERQUE 133' (40.54m) Custom-Splendor Motoryacht 2009

# КОНТАКТЫ

---

Андрей Шестаков (Andrey Shestakov) – ведущий яхтенный брокер отдела продаж яхт и судов компании Shestakov Yacht Sales Inc. Официальный представитель Shestakov Yacht Sales Inc. для русскоговорящих клиентов в центральном офисе компании в Майами/Форт Лодердейл/Флорида/США.

## Контактная информация

---

Email: [andrey@shestakovyachtsales.com](mailto:andrey@shestakovyachtsales.com)

Web: [shestakovyachtsales.com](http://shestakovyachtsales.com)

## Телефоны

---

Краснодарский край: **+7(918)465-66-44**

США, Майами, Флорида: **+1(954)274-4435**

## Время работы

---

Понедельник – Суббота: **9:00 - 21:00**  
EDT

Воскресенье: **Закрето**

## Адрес

---



Harbour Towne Marina, 850 NE 3rd St,  
STE 213, Dania, FL 33004