

CHARLOTTE'S WEB — GRAND BANKS



Судостроитель: GRAND BANKS

Год постройки: 1995

Модель: Траулер

Цена: **ЦЕНА ЯХТЫ ПО ЗАПРОСУ**

Местонахождение: United States

Длина общая: 42' 0" (12.80m)

Ширина: 14' 1" (4.29m)

Мин. осадка: 4' 2" (1.27m)

Крейс. скорость: 9 Kts. (10 MPH)

Макс. скорость: 16 Kts. (18 MPH)

Купить **Charlotte's Web — GRAND BANKS** а также выбрать подходящую вам яхту из нашего каталога яхт вам поможет опытный яхтенный брокер Андрей Шестаков. На сегодняшний день компания **Shestakov Yacht Sales Inc.** имеет большое количество яхт в собственном списке продаж, а также тесно сотрудничает со всеми крупными яхтенными производителями по всему миру.

Для того чтобы купить яхту **Charlotte's Web — GRAND BANKS** а также проконсультироваться по любому вопросу связанному с покупкой, продажей, чартером яхт позвоните по телефону **+7(918)465-66-44**.

ОГЛАВЛЕНИЕ

ОГЛАВЛЕНИЕ	2
ХАРАКТЕРИСТИКИ	3
Обзор	3
Основная информация	4
Размеры	4
Скорость, вместимость и масса	5
Размещение	5
Корпус и палуба	5
Информация о двигателе	5
ПОДРОБНОЕ ОПИСАНИЕ	6
Accommodations	6
Electronics	9
Engines & Machinery	9
Deck,Hull Bridge,Lower Helm	10
Исключения	11
Отказ от ответственности	11
ФОТОГРАФИИ	12
КОНТАКТЫ	18
Контактная информация	18
Телефоны	18
Время работы	18
Адрес	18

ХАРАКТЕРИСТИКИ

Обзор

REDUCED 8/10/2016 !! ABSOLUTELY BEST BUY IN COUNTRY on a 42 GB/ Needs a little updating but overall Very good Inside/Out with 2800 Original Hours on Twin 300 Cats

"Charlotte's Web" (Hull #1302) is a Must see for the 42 Grand Banks Classic buyer looking for great value in one of these classic beauties and is priced \$40-50K behind the competition. The owner has reluctantly put her on the market due to some health issues and wants her to be the next one SOLD !! This low hour 42 Classic is in need of a little interior and electronics updating and TLC (nothing major, soft goods and a thorough exterior detailing/wax and buffing) is all that will be needed to put her in TOP condition. NOTE: (She is not equipped with a bow thruster but handles just fine around the docks with her fairly deep draft and displacement). PUT THIS 42 CLASSIC ON YOUR SHORT LIST AND TAKE ADVANTAGE OF THIS EXCELLENT DEAL AND MAKE HER YOURS !!!

The Grand Banks 42 Classic has been decades in the making. The original Ken Smith design has been amended and updated with the practical input of her owners. The experience gained since the laying of the first GB 42 keel in 1966 is reflected in each one commissioned today. Her practical layout, sturdy fiberglass construction, deep water design, and long range capability all add up to a complete cruising boat. The Grand Banks semi displacement hull design, with a fine entry forward, hard chines aft, and a full keel has been proven on waters around the world. Single or twin diesel power will deliver economy at hull speed and provide higher cruising speeds when larger than the standard engines are chosen. Many power options are available. The flybridge is easily accessible from the main deck and offers excellent 360-degree visibility when underway or maneuvering dockside. A pair of back-to-back double seats provide generous seating for eight with watertight storage beneath the seats. The bridge console has full instrumentation with handy storage for large items below. The steering wheel is handcrafted teak. The standard electric windlass, mounted on a dual roller anchor platform protected by a stainless rail, helps make the anchoring process as simple as possible. The location of the shore power inlets, at the bow and stern, makes power connections possible without boat position being a problem. The foredeck storage locker is great for lines and the large lazarette aft provides convenient storage for a variety of cruising gear. The focal point of the Grand Banks 42 Classic is the deckhouse. The spacious main saloon measures 14-feet, 8-inches by 10-feet, 4-inches and combines the activities hub, entertainment center, and main living area. Forward is the fully equipped galley to port and the complete helm station to starboard. The companion-way forward leads to the guest stateroom with V-berths and a roomy head with its own shower. The galley is complete with a range - oven, refrigerator, stainless steel sink, cutting boards, and excellent storage in several cabinets. The helm area features a full width overhead electronics locker and a flip up storage compartment for manuals and navigational tools. Just aft of the starboard door is the dry-bar cabinet.

Looking aft in the saloon, you can see the long L-shaped settee with a teak yacht table. The aft stateroom displays beautiful teak joinery. Parquet soles, built-in furniture and cabinets and hand-crafted moldings are blended with modern fabrics to create the traditional yacht look. This stateroom features a choice of several layouts with a double berth to starboard and a single berth to port being standard. All layouts have exceptional storage in hanging lockers, bureaus, and below-berth drawers. A large, flat chart drawer is standard in each layout. The private owners head has a separate stall shower and good storage for towels in several cabinets. The engine room in the 42 Classic is special. With working space outboard of and between both engines there is plenty of installation space for essential gear. The standard 8-KW generator comes with a sound shield for quiet operation. The exterior of the hull and deckhouse on the GB 42 is smooth gelcoated fiberglass. Teak decking is laid over the fiberglass on the main deck and flybridge. The bulwarks surrounding the wide main deck are capped with a sturdy teak safety rail providing safe movement from bow to stern for those on board. The Grand Banks 42: In production since the 60s, her hull was redesigned in the early 90s giving the proven Grand Banks semi-displacement hull a longer waterline and an increased beam. Ideal for a couple with children or guests, she cruises economically at 9 knots, yet 17 knots is typical with optional engines. The Classic offers two staterooms, separated by the main saloon and galley. The aft sundeck expands the outdoor living area and provides room for stowage.

Основная информация

Тип судна: Траулер

Модельный год: 1995

Год постройки: 1995

Страна: United States

Размеры

Длина общая: 42' 0" (12.80m)

Длина по ватерлинии: 41' 1" (12.52m)

Ширина: 14' 1" (4.29m)

Мин. осадка: 4' 2" (1.27m)

Скорость, вместимость и масса

Крейс. скорость: 9 Kts. (10 MPH)

Макс. скорость: 16 Kts. (18 MPH)

Водоизмещение: 34000 Pounds

Вместимость воды: 271 Gallons

Вместимость сточного бака: 40 Gallons

Объем топливного бака: 600 Gallons

Размещение

Всего кают: 2

Всего ком. состава: 2

Корпус и палуба

Материал корпуса: Fiberglass

Материал палубы: Teak over Fiberglass

Комплектация корпуса: Semi-Displacement

Информация о двигателе

Двигатели: 2

Производитель: Caterpillar

Модель: 3116

Тип двигателя: Inboard

Тип топлива: Diesel

ПОДРОБНОЕ ОПИСАНИЕ

Accommodations

OVERVIEW This 42 Grand Banks is a two stateroom two head vessel equipped with the desirable walkaround island queen berth in the master stateroom and 3116 Caterpillar engines. She has a galley up to port large open salon and a v-berth forward cabin with an ensuite head and lots of storage.

Guest Stateroom with Ensuite Head

The Guest Stateroom is located forward and features a spacious V-berth with filler cushion. There is an abundance of storage drawers and cabinet storage as well. A private ensuite head is located to starboard.

- V-Berth with Filler Cushion
- Large Pantry
- 6 Drawers
- Air Conditioning with Reverse Heat
- Access Door To Anchor Locker
- Overhead Hatch with Screen
- (2) Opening Windows with Curtains
- (2) Reading Lamps
- Solid Wood Privacy Door
- Parquet Sole
- Bilge Access Hatch

Head

- Vacuflush Head
- Teak Framed Mirror
- Shower with Shower Curtain
- Molded Oval Sink with Faux Countertop
- Teak Grate Sole
- Overhead Light
- (3) Drawers
- (2) Large Reach In Areas
- Solid Wood Privacy Door

Salon

The Salon is located to starboard and boast a large full length L-shaped settee with a Hi-Lo Grand Banks drop leaf table. Forward of the settee is a bar, ice-maker and glass and bottle storage. Forward of the bar and aft of the helm station is a door for access to the weather deck. Port and aft of the galley is a TV, entertainment center, bench seat with storage and an access door to the weather deck. Large windows throughout make this area light and bright.

- Teak Grab Rail on Overhead
- Curtains w/Tie Backs
- Parquet Teak Sole
- Overhead Lights
- Entertainment Center with 27" Olevia TV
- L-Settee Seats 5
- End Table
- Swing Arm Lamp
- Bar with Ice Maker
- CD Player
- Port and Starboard Access Doors to Weather Deck
- Teak Valence
- Air Conditioning with Reverse Heat

Galley

The galley is located to port and offers an abundance of storage, large countertop and elegant teak trim through out.

- Gurnert Refrigerator/Freezer
- Princess 3-Burner Electric Stove w/Oven and Broiler
- Sharp Built-In Microwave
- Large Opening Windows
- Large Stainless Steel Sink
- Exhaust Fan
- Utility Locker
- Tip-Out Trash Bin
- Curtains
- Sink Covers w/Teak Cutting Board
- (6) Teak Drawers
- Dish Locker
- Under Sink Cabinet
- External Temperature Guages for Refrigerator and Freezer

Master Stateroom with Ensuite Head and Shower Stall

The Master Stateroom is located aft and features the desirable centerline queen berth. There is an abundance of storage through out this cabin. Lockers are located port and

starboard with multiple drawers. Aft to port is a access companionway to the aft weather deck. Forward to starboard is a ensuite shower stall. Forward to port is a ensuite head with vanity and sink. Elegant teak finishes and parquet teak floors.

- Island Queen Berth
- Water Tanks Located Under Berth
- Air Conditioning with Reverse Heat
- Teak Parquet Sole
- Companionway Door to Aft Deck
- Opening Windows and Curtains
- (2) Hanging Lockers
- Opening Hatch with Screen
- Teak Cabin Door
- (2) Brass Reading Lights
- (18) Drawers
- Teak Framed Mirror
- TV/Phone Jacks

Master Shower

- Seperate Ensuite Shower Stall to Starboard with Solid Teak Privacy Door
- Opening Window with Curtain
- Teak Grate Shower Sole
- Shower Sump Pump
- Large Reach-In Storage with Doors
- Hand Held Shower Fixture
- Overhead Lighting
- Teak Soap holder

Master Head

- Vacuflush Toilet
- Oval Molded Sink with Countertop
- Overhead Lighting
- Opening Window with Curtain
- Teak Framed Mirror
- Teak Parquet Sole
- (2) Drawers
- Teak Towel Bar
- Large Reach-In Storage Lockers

Electronics

Lower Helm Electronics

- Raymarine E-80 GPS/Plotter/Radar
- Raymarine Auto Pilot
- Raytheon Ray 201 VHF Radio
- Autohelm Digital Depth
- Bridge Electronics
 - Icom IC-M304 VHF Radio
 - Raymarine ST-60 Depth Finder
 - Autopilot
 - Lowrance GPS/Plotter (New)

Engines & Machinery

The Engine room is easily be accessed through the salon floor hatches. The engine room is light and well laid out. Easy access to mains, genset and all systems including the outboard side of port and starboard mains.

- Twin 3116 Caterpillar Engines 300Hp Each with 2813 hours
- Twin Disc Transmissions 2.47:1 Ratio
- 2" Stainless Steel Shafts
- Bronze Struts
- Bronze Rudders
- Four Blade Bronze Propellers
- Glendinning Synchronizer
- Racor Fuel Filter System
- Sight Glasses on all Fuel Tanks
- Supressed Fire Fighting System
- Engine Alarm Panel Oil, Water and Gear
- Emergency Tiller
- Automatic/Manual Bilge Pumps
- Pressurized Water System with Hot And Cold Water
- Bilge Blowers
- Westerbeke 8KW Generator (1674 Hours)
- AC/DC Distrabution Panel
- 50 Amp Shore Power
- Battery Select Switches
- Battery Charger
- (2) 8D Batteries
- (1) 4D Battery

- **Marine Air Conditioning with Reverse Heat 16,000 BTU Salon**
- **Marine Air Conditioning with Reverse Heat 12,000 BTU Master**
- **Marine Air Conditioning with Reverse Heat 6,000 BTU Guest**
- **Galvanic Isolator**
- **Hubble Shore Power Hook Up Bow and Stern**
- **Cable and Phone Hook Ups**
- **Manual Bilge Pump**
- **Fuel Manifold System**
- **Engine Compartment Overhead Lighting**
- **Vernalift Mufflers**
- **Oil Change System**
- **Raw Water Sea Strainers**

Deck,Hull Bridge,Lower Helm

Wide teak decks (teak in very good condition) and varnished cap rails. There is a large aft trunk cabin with dinghy and chocks. Forward is a substantial Lofrans Tigres horizontal anchor windlass system with three control stations. Fresh water washdown system forward and hot/cold shower aft.

- **Lofrans Windlass System with 3 Control Stations**
- **Salon Doors Port and Starboard**
- **Hot and Cold Shower at Transom**
- **Teak Swimplatform with Stainless Fold Down Ladder**
- **Divided Anchor Locker**
- **Flybridge with Full Helm Station and Bench Seating Port and Starboard**
- **Flybridge Settee Seating**
- **Flybridge Sunbrella Covers**
- **Sunscreens for Windows**
- **Varnished Teak Handrails with Covers**
- **Stainless Steel Rail Supports**
- **Varnished Teak Transom**
- **Mast And Boom**
- **Dinghy and Dinghy Davit System**
- **Bimini Top**
- **Gelcoat Hull and House**
- **Lazarette Storage**
- **Green Bottom Paint**
- **Blue Boot Stripe**
- **Off-White Hull**

Flying Bridge

- **Bimini Top (Recent)**
- **Helm Station to Starboard**
- **Wheel Steering**
- **Fore and Aft Bench Seating**
- **Dinette Seating with Teak Table**
- **Venturi Windshield with Grab Rail Frame**

Lower Helm

The lower helm is located in the salon forward to starboard.

- **Weather Deck Door to Starboard**
- **Opening center Window**
- **Stainless Steering Wheel with Teak Trim**
- **AC/DC Panel**
- **Morse Controls**
- **Compass**
- **Water Tank Guages**

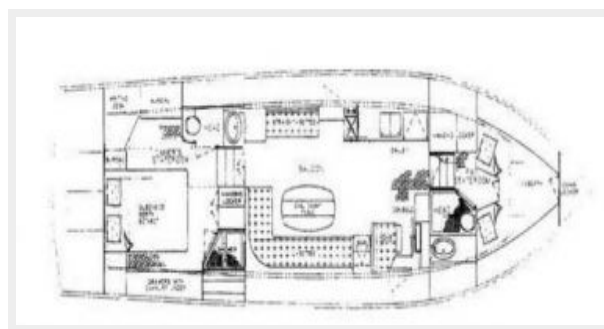
Исключения

При продаже яхты исключаются личные вещи владельца.

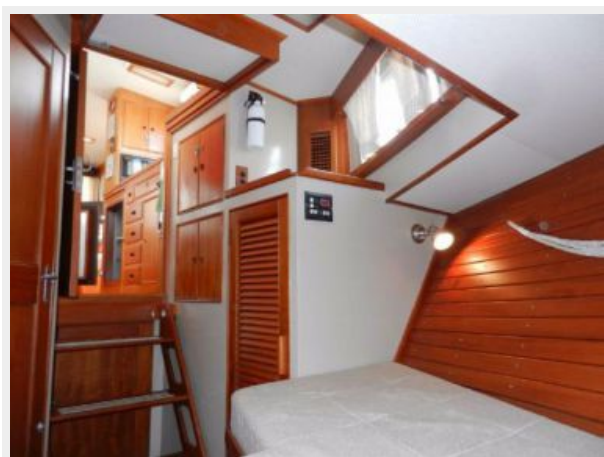
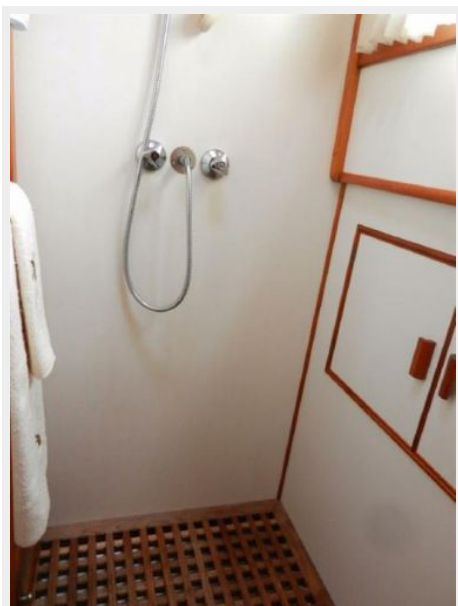
Отказ от ответственности

Компания предоставляет описание судна или яхты добросовестно, но не может гарантировать точность этой информации, а также не ручается за техническое состояние. Покупатель должен проинструктировать своих агентов или оценщиков исследовать представленную информацию более подробно, по собственному желанию. Продажа судна или яхты, изменение цены или снятие с продажи будет происходить без предварительного уведомления.

ФОТОГРАФИИ













КОНТАКТЫ

Андрей Шестаков (Andrey Shestakov) – ведущий яхтенный брокер отдела продаж яхт и судов компании Shestakov Yacht Sales Inc. Официальный представитель Shestakov Yacht Sales Inc. для русскоговорящих клиентов в центральном офисе компании в Майами/Форт Лодердейл/Флорида/США.

Контактная информация

Email: **andrey@shestakovyachtsales.com**

Web: **shestakovyachtsales.com**

Телефоны

Краснодарский край: **+7(918)465-66-44**

США, Майами, Флорида: **+1(954)274-4435**

Время работы

Понедельник – Суббота: **9:00 - 21:00**
EDT

Воскресенье: **Закрито**

Адрес



Harbour Towne Marina, 850 NE 3rd St,
STE 213, Dania, FL 33004