

## UNBRIDLED — TRINITY



**Судостроитель:** TRINITY

**Год постройки:** 2009

**Модель:** Мега-яхта

**Цена:** **ЦЕНА ЯХТЫ ПО ЗАПРОСУ**

**Местонахождение:** Italy

**Длина общая:** 191' 0" (58.22m)

**Ширина:** 35' 9" (10.90m)

**Макс. осадка:** 9' 0" (2.74m)

**Крейс. скорость:** 14 Kts. (16 MPH)

**Макс. скорость:** 16 Kts. (18 MPH)

Купить **UNBRIDLED — TRINITY** а также выбрать подходящую вам яхту из нашего каталога яхт вам поможет опытный яхтенный брокер Андрей Шестаков. На сегодняшний день компания **Shestakov Yacht Sales Inc.** имеет большое количество яхт в собственном списке продаж, а также тесно сотрудничает со всеми крупными яхтенными производителями по всему миру.

Для того чтобы купить яхту **UNBRIDLED — TRINITY** а также проконсультироваться по любому вопросу связанному с покупкой, продажей, чартером яхт позвоните по телефону **+7(918)465-66-44**.

# ОГЛАВЛЕНИЕ

ОГЛАВЛЕНИЕ	2
ХАРАКТЕРИСТИКИ	3
Основная информация	3
Размеры	3
Скорость, вместимость и масса	3
Размещение	3
Корпус и палуба	3
Информация о двигателе	4
ПОДРОБНОЕ ОПИСАНИЕ	5
HIGHLIGHTS	5
Accommodations	5
Capacities	6
Machinery	6
Communication, Navigation & Entertainment Systems	7
Galley & Laundry Equipment	15
Deck Equipment	17
Security, Fire fighting & Safety Equipment	18
Tenders & Toys	19
Исключения	20
Отказ от ответственности	20
ФОТОГРАФИИ	21
КОНТАКТЫ	24
Контактная информация	24
Телефоны	24
Время работы	24
Адрес	24

# ХАРАКТЕРИСТИКИ

## Основная информация

Тип судна: Мега-яхта

Модельный год: 2009

Год постройки: 2009

Год обновления: 2015

Страна: Italy

## Размеры

Длина общая: 191' 0" (58.22m)

Ширина: 35' 9" (10.90m)

Макс. осадка: 9' 0" (2.74m)

## Скорость, вместимость и масса

Крейс. скорость: 14 Kts. (16 MPH)

Макс. скорость: 16 Kts. (18 MPH)

Водоизмещение: 1653466.965 Pounds

Чистый вес: 803 Pounds

Вместимость воды: 6038 Gallons

Объем топливного бака: 34000 Gallons

## Размещение

Всего кают: 6

Спальные места: 12

Каюта капитана: Да

Койки экипажа: 13

## Корпус и палуба

Материал корпуса: Aluminum

Материал палубы: Teak

Комплектация корпуса: Full Displacement

## Информация о двигателе

---

**Двигатели:** 2

**Производитель:** Caterpillar

**Модель:** 3512B, 2012HP

**Тип двигателя:** Inboard

**Тип топлива:** Diesel

---

# ПОДРОБНОЕ ОПИСАНИЕ

---

## HIGHLIGHTS

---

- Custom built displacement motor yacht
- Sleek and classic styling
- Immaculate throughout - Impeccably maintained
- Hull and superstructure paint in 2013 and Interior refit in 2015
- Well proven world cruising yacht
- Large outdoor spaces
- Zero Speed Stabilizers
- Extensive range of tenders, diving equipment and water toys
- One Owner yacht

## Accommodations

---

### OWNER

Master cabin – King bed

En-suite bathroom with Jacuzzi bathtub and shower

2 x Sinks, 1 x Toilet, 1 x Bidet

### GUESTS

2 x VIP Cabins – Queen bed

En-suite bathrooms with bath/shower

(2) Sinks, (1) Toilet, (1) Bidet

2 x Twin Cabins – 2 x Twin beds, 1 x Pullman berth

En-suite bathrooms with bath/shower

(2) Sinks, (1) Toilet, (1) Bidet

1 x Multi Purpose Cabin – 1 x Murphy or 2 x Pullman berths En-suite bathroom with bath/shower

## CREW

1 x Captain's Cabin with a double bed

En-suite bathroom with stand up shower

1 x Engineer's Cabin with a double bed + single bed

En-suite bathroom with stand up shower

2 x Two berth cabins with en-suite stand up shower rooms

2 x Three berth cabins with en-suite stand up shower rooms

## Capacities

---

Watermakers: 4,000 US Gallons ( 15,140 liters)

Lube Oil: 500 US Gallons ( 1,892 liters)

Waste Oil: 975 US Gallons ( 3,685 liters)

Grey Water: 3,160 US Gallons ( 11,994 liters)

Black Water: 577 US Gallons ( 2,181 liters)

### Speed Consumption per hours Range

Maximum: 16 knots 233 US Gal/882 liters 2,000 NM

Cruising: 13.5 knots 90 US Gal/340 liters 3,600 NM

Economical: 12 knots 64 US Gal/241 liters 5,932 NM

## Machinery

---

### Main Engines

Engine Type: 2 x Caterpillar 3512B DITA2 C-rated, 2,012 HP each

Engine Hours May 2016

Port engine: 8781 hrs

Starboard engine: 8767 hrs

Gearboxes: 2 x Reintjes WAF 743 K31

Gear ratio = 3.52:1

Shaft and Propellers: 2 x Michigan Wheel 5 blade, 2 x 6" Aqualoy HS-22

## Generators & Electricity

Generators: 2 x 230 KW Kilo Pak - **Complete rebuild in 2013**

Emergency gen: 1 x 99 kW Kilo Pak

Get Hours after rebuild	May 2016	Port Main Generator:	6970
hrs	Starboard main Generator:	6186hrs	
Emergency Generator:	404hrs	Shore Power:	2 x ASEA AC100-3 Power

## Converters **Air Conditioning**

2 x Bitzer 444000 btu/hr compressors, 45kW heating Ventilation: Interior: Marine Air,  
Fantec, Engine room: Novenco **Other Machinery**

Watermakers: 2 x FCI

Stabilizers: 2 x Quantum QC-1800 Zero Speed

Bow Thruster: Quantum QT-200 Hp

Stern Thruster: Quantum QT-75 Hp

Steering System: EMI Dual 5 Hp

Rudder Angle Indicator: Anschutz

Fuel Separator & Filtration: Alfa Laval P100

Sewage System: Headhunter Tidal Wave

Oil/Water Separator: Mahle NFV MPEB-VT

Fire/Bilge Pump: 2 x Grundfos 7.5 Hp

Boilers: 4 x 80 US Gallons, 10 kW each WC's: Headhunter

## Communication, Navigation & Entertainment Systems

### Communication System

SATCOM: VSAT (seatel), FB250, FB500

Telephone System: Panasonic TDX 200

SSB Radiotelephone: Furuno FS 1570

VHF:	2 x Furuno 8800 D	3 x Simrad,
bridge, crew mess and Captain's cabin		
Cellular Phone System:	Tellular SX7t GSM	
Watchkeeping Receiver:	Sat C GMDSS Alarm Panel	
Intercom system:	Raymarine	
BNWAS:	3 Stage Alarm system	

### Navigation Systems

Radar:	Furuno X Band, Furuno S Band	
Gyrocompass:	Gyrostar 22, Anschutz	
Magnetic Compass:	Anschutz	
Auto Pilot:	Pilotstar D, Anschutz	
Echo Sounder:	Furuno FCV 1200	
GPS:	2 x Veica MX 420 DGPS, Simrad MX612 DGPS	
Weather FAX:	Sat-C Navtex:	Foruno NX 700 Chart
Plotter:	Transas Ecdis master & slave	
Log:	B&G and Consillium	

### Office Equipment:

Ship's Computer: Ship's Office: OptiPlex 760 with HP2195 monitor

Bridge & Captain's Office: Mini mac with 27" monitor

Engineer's Office: OptiPlex 760 PC with HP2195 monitor

Print/Fax/Scan/Copy: Ship's Office & Bridge: Cannon MX 7600 (all in one)

Bridge: HP Office Jet Pro 8600 Pro Plus (all in one)

Captain's Office: HP Office Jet Pro 8600 Pro Plus (all in one)

Engineer's Office: HP Printer

Guest Study: (2) Apple 27" Monitors

(1) Epson Workforce 1100 printer

(1) Samsung CLP 315-W Wireless Laser Printer



(1) Cannon Pro 9500 mark II Printer (1) Apple PC

Chart Plotter: Transas 4000 ECDIS (Master & Slave)

Log: B&G and Consillium

Navtex: Furuno NX 700

### **Audio/Visual Entertainment System:**

#### MAIN SALON

(1) Media Décor Motorized Art Frames

(4) B&W CCM80 speakers

(4) B&W FPM5 Vented Box Systems

(1) Arcam AVR280BLK Receiver

(1) Crestron CP2E Control Processor

(1) Crestron TPMC-8X Touchpanel

(1) Crestron TPMC-8X-DSW Docking Station

(1) iPad - Crestron AV App

(2) Sunfire Subwoofers

(1) Crestron Room Media Controller

(1) CNXRMCLV Control System

(1) Zantech CB18 Phoenix Connector

(3) Crestron Light Switch Keypad

#### DINING ROOM

(2) B&W Ceiling Speakers

(1) Crestron Touchpanel

(3) Crestron Light Switch Keypad

(1) Crestron Docking Station

(1) iPad - Crestron AV App

(1) Auxilary Port

---

## FOYER

(2) B&W Speakers

(2) Linn Sweetspot Speakers

(1) Crestron Touchpanel

(1) Crestron Keypad

## GYM

(2) B&W Ceiling Speakers

(1) NAD DVD Player

(1) Sherbourn Amplifier

(1) Sunfire Subwoofer

(1) Crestron Docking Station

(4) Crestron Keypads

(1) B&W Ceiling Speaker

(1) Crestron Keypad (Bathroom)

## HIS OFFICE

(1) 42" NEC Plasma

(2) B&W Speakers

(1) Sherbourn Amplifier

(1) Sunfire Subwoofer

(1) Crestron Touchpanel

(1) iPad – Crestron AV App

(3) Crestron Light Switch Keypad

## HER OFFICE

(2) B&W Speakers

(1) Sherbourn Amplifier

(1) Sunfire Subwoofer

---

(1) iPad – Crestron AV App

## MASTER STATEROOM

(2) Auxiliary Ports

(4) B&W Speakers

(1) Sunfire Subwoofer

(1) Runco SP-50 Plasma

(1) Crestron Room Media Controller

(1) Crstron Processor

(1) Crestron Touchpanel (Bathroom)

(3) Crestron Light Switch Keypads (Bathroom)

(1) B&W Ceiling Speaker (Bathroom)

(4) Sonace Symphony

(1) 20" Sharp Monitor

(1) iPad Mini - Crestron Av App

(4) Crestron Light Switch Keypad

## PILOT HOUSE

(2) B&W CCM65 Ceiling Speakers

(1) Sherbourn LDS2/75 Amplifier

(1) VST Receiver

(5) Crestron Light Switch Keypads

(2) Crestron Touchpanels

(1) Sonace Table Top iPod

(1) Auxiliary Ports

## SKYLounge

(2) Media Décor Motorized Art Frames

(2) Sunfire Subwoofers

---

(4) Crestron Light Switch Keypads

(1) Cisco Wireless Access Point

(1) Auxiliary Ports

(1) iPad - Crestron AV App

(1) iPad Mini - Crestron AV App

#### GUEST STUDY

(1) Crestron Processor

(1) NAD DVD Player

(1) Sunfire Subwoofer

(1) Crestron Light Switch Keypad

(1) 42" NEC Plasma

(3) Quantum LCR Speakers

(1) iPad - Crestron AV App

(1) iPad Docking Station

#### VIP GUEST PORT

(1) 32" NEC Plasma

(1) Crestron Light Switch Keypad

(1) iPad - Crestron AV App

(1) iPad Docking Station

(2) Linn Sweetspot Speakers

(1) NAD DVD Player VIP GUEST STARBOARD

(1) 32" NEC Plasma

(1) Crestron Light Switch Keypad

(1) iPad - Crestron AV App

(1) iPad Docking Station

(2) Linn Sweetspot Speakers

---

(1) NAD DVD Player

GUEST TWIN PORT

(1) 32" NEC Plasma

(1) NAD DVD Player

(1) iPad - Crestron AV App

(1) iPad Docking Station

(1) Sherbourn Amplifier

(2) Speakercraft Flush Mount Speakers

GUEST TWIN STARBOARD

(1) 32" NEC Plasma

(1) NAD DVD Player

(1) iPad - Crestron AV App

(1) iPad Docking Station

(1) Sherbourn Amplifier

(2) Speakercraft Flush Mount Speakers

LOWER HALL

(2) Speakercraft (1) NAD DVD Player

(4) Crestron Light Switch Keypads

(2) Speakercraft Flush Mounted Speakers

GALLEY

(2) B&W Speakers

(3) Crestron Light Switch Keypads

(1) VST Car Stereo

(1) 20" Sharp LCD Monitor

(1) Crestron Touch Panel CREW LOUNGE

(1) Crestron Processor

- (1) NAD DVD Player
- (1) Velodyne Subwoofer
- (5) Speakercraft Speakers
- (1) iPad – Crestron AV App
- (1) iPad Docking Station
- (1) 32” Runco Monitor
- (1) Cisco Wireless Access Point

#### CAPTAIN’S CABIN

- (1) NAD DVD Player
- (2) Speakercraft Speakers
- (1) Crestron Touch Panel
- (1) Crestron Docking Station
- (1) Crestron Light Switch Keypad
- (1) Liberty Panel Crafters Custom Decora Style Insert
- (1) 32” LCD Monitor CREW CABINS (4)
- (1) Info Display Integration TV/DVD System per berth
- (2) Speakercraft 6” Round Speakers
- (1) VST receiver
- (2) VST DVD Player
- (2) VST Wireless Headphones
- (1) AV Toolbox Amp
- (1) Liberty Panel Crafters Custom Decora Style Insert

#### LAZARETTE/DIVE ROOM

- (2) JL Audio Marine Subwoofers
- (4) JL Audio Marine Speakers
- (1) Creston Waterproof Handheld Remote

(1) Crestron Wall Mount Touchpanel

(1) Crestron Touchpanel

#### SUNDECK

(1) Crestron Touchpanel

(1) Crestron Docking Station

(1) Crestron Waterproof Handheld Remote

(16) JL Audio Speakers

(1) Runco 42" Monitor

(1) iPad – Crestron AV App

#### UPPER DECK AFT

(1) Crestron Touchscreen

(2) Crestron Keypads

(1) Crestron Touchpanel

(1) 2 Way RF Receiver

(4) JL Audio Marine Speakers

(6) JL Audio Speakers

(2) JL Audio Subwoofers

(1) Cisco Wireless Access Point

#### PORTUGESE BRIDGE

(2) JL Audio Marine Subwoofers

(4) JL Audio Marine Speakers

#### WINE FRIDGES

(2) Subzero – 427 fridges holding 132 bottles each

## Galley & Laundry Equipment

---

### Main Galley Equipment

Cooking Equipment: (2) Gaggenau Electric ovens

(1) Gaggenau Twin Induction Hot Plate

(1) Commercial Vulcan electric Salamander

(1) Commercial Sharp 1200W Microwave

Other: (1) Kitchen Aid 10kg Ice Machine

(1) 1 Hp Under-sink Disposal Unit

Dishwasher: (1) Commercial Electrolux Under counter High Temp

Crew Galley/Mess Equipment

Cooking Equipment: (1) Amana Microwave

Refrigeration/Freezer: (1) Liebherr Stand Up Fridge/Freezer

Other: (1) Miele Dishwasher

(1) Nespresso Pixie

(1) Breville Kettle

Additional Galley Equipment

(1) Pacojet Commercial Processor

(1) Kitchen Aid Bench Top Mixer

(1) Commercial 3 Hp Vota Prep Blender

(1) Commercial Juicer Extractor (1) Dehydrator

(1) Vacuum Sealer

(1) Bread Machine

(1) Thermomix

PANTRY:

(1) Keurig Coffee Machine

(2) Nespresso Pixie

(1) Santos Orange Juicer

(1) 1 Hp Under-sink Disposal Unit



## SUN DECK:

Viking Professional 2-burner BBQ with oven top Laundry Equipment:

Main Laundry Equipment (3) Miele Touchtronic T1415 Dryers

(3) Miele Touchtronic W1215 Washing Machines

(1) Rowenta Expert Iron

(1) Shark Steam Floor Cleaner

---

## Deck Equipment

---

Anchor Windlass System: Muir

Aft Warping Capstans: Muir

Ground Tackle: Port and Starboard

Boat Crane and Davits: Nautical Structures

Main deck aft: Horizontal sliding crane that launches port and starboard sides of vessel – 6500 SWL

Sundeck: EZ 2500 – EX Solas hydraulic rotating crane with single boom

Bow: EZ 2500 – EX Solas hydraulic rotating crane with single boom

Passerelle: Marquipt aft leading, hydraulic, extending and rotating

Side Boarding Ladders: (2) Marquipt Manual

Swimming Platform: Built in as part of the vessel

Searchlight: ARC 600

Awnings: Sundeck: Forward and aft. Bridge deck aft.

Portuguese deck

Jacuzzi Dip Pool: Bradfords Spa's 8person custom tile design

Gym Equipment: (1) Woodway treadmill

(1) Cybex Elliptical Trainer

(1) Bow Flex Bench & Weights

## Security, Fire fighting & Safety Equipment

---

Security: CCTV system

12 x Cameras throughout vessel

2 x Flir cameras, one leading fwd & one leading aft

Controlled from pilothouse and crew mess.

Viewable on every TV on the boat

Fire Fighting: 2 x Full BA bunker suits

2 x Fire axes

2 x Spare BA tanks

Extra foam applicator

Fire hoses on every deck with start/stop pump buttons at hose

Ultra Fog fire suppression system throughout the whole vessel

Consillium Salwico CS4000 fire alarm system

MX 4000 control panel on bridge

Fire doors throughout the vessel

8 x Sliding fire doors 4 x Watertight doors

Personal portable fire extinguishers in every

cabin, guest area, engine room and confined space

Alarms: Simon monitoring system: Security, watertight doors, air compressor, HVAC tanks, bilges, pumps & valves, fire system, hydraulics, electrical Safety

Life Rafts: 6 x 16-man

Life Rings: 2 x With smoke floats and line

2 x With light

2 x With line

2 x Life Rings

EPIRBS: (1) 406 MHz

Flares: (18 Rocket)

21 x Hand held

Ship's Safe: Master Suite: Port side – Hayman Electronic key pad lock

Stbd side – Challenger Electronic key pad and card swipe

Captain's Cabin: Hayman, dial combination lock

Medical Equipment: MCA Compliant: Full medical equipment kit

1 x I.V. kit

1 x Pediatric kit

4 x First Aid Response kit

1 x Defibrillator

1 x Stretcher

1 x Dental kit

Assortment of controlled drugs

Head immobilizer, neck brace and inflatable splints

Other: 4 x Line throwers

11 x Smoke floats

66 x Inflatable lifejackets

1 x Rescue tender

1 x Sat C – GMDSS, multiple DCS alarms through all

VHF radios

5 x EEBD (Emergency Escape Breathing Devices)

---

## **Tenders & Toys**

---

1 x 28' Zodiac Hurricane H853. Volvo diesel, jet drive

1 x 31' Novurania Chase. Volvo diesel, stern leg

Jet Skis: 2 x Yamaha VX 1100 Cruisers

Watersports: 2 x Ocean Kayaks, 4.3m

2 x Sets of water skis

2 x Mable's

1 x Banana

2 x Wakeboards

2 x Stand up paddleboards

1 x Racing Kayak **Not for sale to US residents while in US waters**

## Исключения

---

При продаже яхты исключаются личные вещи владельца.

## Отказ от ответственности

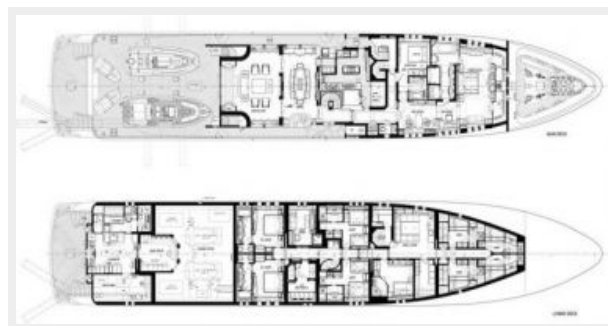
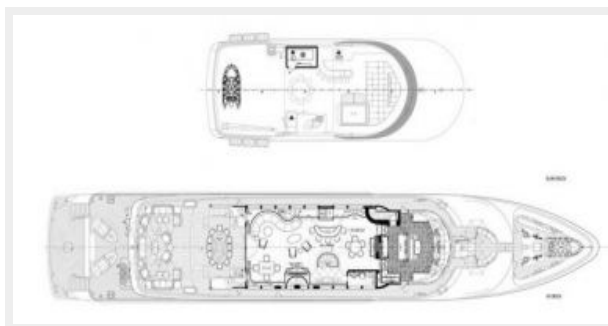
---

Компания предоставляет описание судна или яхты добросовестно, но не может гарантировать точность этой информации, а также не ручается за техническое состояние. Покупатель должен проинструктировать своих агентов или оценщиков исследовать представленную информацию более подробно, по собственному желанию. Продажа судна или яхты, изменение цены или снятие с продажи будет происходить без предварительного уведомления.

# ФОТОГРАФИИ







# КОНТАКТЫ

---

Андрей Шестаков (Andrey Shestakov) – ведущий яхтенный брокер отдела продаж яхт и судов компании Shestakov Yacht Sales Inc. Официальный представитель Shestakov Yacht Sales Inc. для русскоговорящих клиентов в центральном офисе компании в Майами/Форт Лодердейл/Флорида/США.

## Контактная информация

---

Email: [andrey@shestakovyachtsales.com](mailto:andrey@shestakovyachtsales.com)

Web: [shestakovyachtsales.com](http://shestakovyachtsales.com)

## Телефоны

---

Краснодарский край: **+7(918)465-66-44**

США, Майами, Флорида: **+1(954)274-4435**

## Время работы

---

Понедельник – Суббота: **9:00 - 21:00**  
EDT

Воскресенье: **Закрито**

## Адрес

---



Harbour Towne Marina, 850 NE 3rd St,  
STE 213, Dania, FL 33004