

EVELYN — EGG HARBOR



Builder: EGG HARBOR

Year Built: 2002

Model: Sport Fisherman

Price: PRICE ON APPLICATION

Location: United States

LOA: 37' 0" (11.28m)

Beam: 13' 6" (4.11m)

Max Draft: 3' 0" (0.91m)

Our experienced yacht broker, Andrey Shestakov, will help you choose and buy a yacht that best suits your needs Evelyn — EGG HARBOR from our catalogue. Presently, at Shestakov Yacht Sales Inc., we have a wide variety of yachts available on our sale's list. We also work in close contact with all the big yacht manufacturers from all over the world.

If you would like to buy a yacht Evelyn — EGG HARBOR or would like help answering any questions concerning purchasing, selling or chartering a yacht, please call +1(954)274-4435

TABLE OF CONTENTS

TABLE OF CONTENTS	2
SPECIFICATIONS	3
Basic Information	3
Dimensions	3
Accommodations	3
Hull and Deck Information	3
Engine Information	3
DETAILED INFORMATION	4
General Vessel Specifications	4
Interior	5
Equipment	5
Electronics	5
Exclusions	5
Disclaimer	5
PHOTOS	7
CONTACTS	8
Contact details	8
Telephones	8
Office hours	8
Address	8

SPECIFICATIONS

Basic Information

Category: Sport Fisherman

Model Year: 2002

Year Built: 2002

Country: United States

Fly Bridge: Yes

Cockpit: Yes

Dimensions

LOA: 37' 0" (11.28m)

Beam: 13' 6" (4.11m)

Max Draft: 3' 0" (0.91m)

Accommodations

Total Cabins: 2

Total Heads: 1

Hull and Deck Information

Hull Material: Fiberglass

Engine Information

Engines: 2

Manufacturer: Caterpillar

Model: 3126

Engine Type: Inboard

Fuel Type: Diesel

DETAILED INFORMATION

General Vessel Specifications

Owner Willing to Accept Quality Trades of 35' (or larger) Express Boats The Egg Harbor 37 SportYacht offers luxury, performance and roominess. Inside and out, this yacht blends time-honored tradition with cutting-edge technology. The results are striking - innovative interiors, contemporary styling, and the spaciousness of a 40-footer topside and below. The galley and salon are on the same level; there's an elegant, forward master stateroom; a comfortable guest cabin; and a full-size shower. Unmistakably a traditional sport-cruising yacht - with a hallmark raised sheer line and enhanced Carolina Flare - the SportYachts are the next generation of Egg Harbor's classic hull design, which provides an extremely soft, dry ride. Like the 52 that introduced the series, the 37 flaunts a rakish profile, and distinctive oversize flybridge with unrivaled room for a boat of its size. The innovative cantilevered bridge shelters the cockpit while a starboard opening offers safer, easier topside access. An amidships helm provides excellent visibility in all directions. Two helm chairs are standard, and there's room to walk behind each chair. Also standard are full instrumentation and keyless ignition. The newly designed console features plenty of room for a full array of electronics. Forward of the helm, to the port side, is a large, L-shaped lounge with comfortable seating for five. To starboard, another lounge offers additional seating and conceals a standard rod stowage locker for a full complement of rods and reels. The expanded flybridge is a key distinguishing characteristic of Egg Harbor's SportYacht series. Fore and aft overhangs expand the usable space up top, while streamlining the overall profile. The high-performance, blue-water hull is designed to run 100 miles or more offshore to the canyon for fishing or to the islands for cruising. With a 13-foot, 6-inch beam, the large cockpit is the perfect platform for great parties or catching the big ones. The cockpit also offers the convenience of easy engine room access. The cockpit, with standard transom door, boarding box and gate, also features a tackle center with sink, storage and icebox, a fish box with hinged hatch and live baitwell, a large dunnage box for all storage needs, four rod holders, and side stowage lockers port and starboard. The impeccable interior and luxury accommodations reflect Egg Harbor's time-honored craftsmanship. Spanning the SportYacht 37's aft section is a gracious salon featuring a large, L-shaped designer sofa and high-low table to starboard (with rod storage below). The standard full entertainment center includes a remote color television - VCR and mini-rack stereo system with CD and FM antenna. The port galley features functional designer counters, drawer, locker, and dish stowage. Also standard are a designer sink and faucet and two-burner electric stove. Also included in the galley is a microwave oven with an under-counter 110 volt refrigerator. Throughout the interior, fine woodwork showcases excellent materials and quality equipment. The lower deck boasts a forward master stateroom with an island berth and built-in night tables, plus a cedar lined hanging locker, linen drawers and a full-length mirror. An overhead hatch, with screen and sunshade, adds a feeling of spaciousness. The guest cabin features two over-and-under wide berths, with richly finished, lighted hanging lockers. An unusually large head features a full-size shower, designer countertops, an exhaust fan, an electric head, and fitted cabinetry.

Interior

- Norcold Refrigerator
- Raritan Icemaker
- Princess 2-Burner Stove
- Kenmore Microwave
- Samsung Television
- Cruisair Air Conditioners
- Entertainment Center in Salon with TV, CD Player and Surround Sound
- TV with DVD in Master Stateroom
- Satellite TV for Salon and Master Stateroom
- Electric Outlets

Equipment

- Onan 11kW Generator with 1150 hours
- Switlik Life Raft on Bow
- Rupp Outriggers
- (7) Rod Holders on the Gunnels
- Rocket Launcher on Bridge Holds (6) Rods
- Spare Props
- Ice Maker
- Inverter Installed in 2013, Can Run Ice Maker

Electronics

- Furuno NavNet
- Raymarine AP
- Clarion Stereo
- Icom VHF with Second VHF in Cockpit
- Remote Access and Speakers to Clarion Radio in Cockpit

Exclusions

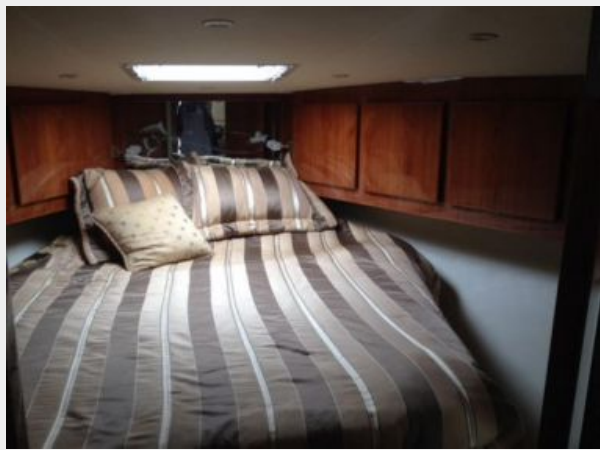
Owner's personal belongings.

Disclaimer

The Company offers the details of this vessel or yacht in good faith but cannot guarantee or warrant the accuracy of this information nor warrant the condition of the vessel. A buyer should instruct his representatives, agents, or his surveyors, to investigate such details as the buyer

desires validated. This vessel or yacht is offered subject to prior sale, price change, or withdrawal without notice.

PHOTOS



CONTACTS

Andrey Shestakov, leading yacht broker of the sales department of Shestakov Yacht Sales Inc. Shestakov Yacht Sales Inc., the official representative of the Miami/Fort Lauderdale FL headquarters.

Contact details

Email: andrey@shestakovyachtsales.com

Web: shestakovyachtsales.com/en/

Telephones

USA: +1(954)274-4435

Office hours

Monday – Saturday: **9:00 - 21:00** EDT

Sunday: **closed**

Address



Harbour Towne Marina, 850 NE 3rd St,
STE 213, Dania, FL 33004