

TAI PAN — VIKING SPORT CRUISERS



Судостроитель:
VIKING SPORT CRUISERS

Год постройки: 2006

Модель: Моторная яхта

Цена: **ЦЕНА ЯХТЫ ПО ЗАПРОСУ**

Местонахождение: United States

Длина общая: 75' 0" (22.86m)

Ширина: 18' 9" (5.72m)

Мин. осадка: 5' 3" (1.60m)

Макс. осадка: 5' 6" (1.68m)

Крейс. скорость: 26 Kts. (30 MPH)

Макс. скорость: 34 Kts. (39 MPH)

Купить **TAI PAN — VIKING SPORT CRUISERS** а также выбрать подходящую вам яхту из нашего каталога яхт вам поможет опытный яхтенный брокер Андрей Шестаков. На сегодняшний день компания **Shestakov Yacht Sales Inc.** имеет большое количество яхт в собственном списке продаж, а также тесно сотрудничает со всеми крупными яхтенными производителями по всему миру.

Для того чтобы купить яхту **TAI PAN — VIKING SPORT CRUISERS** а также проконсультироваться по любому вопросу связанному с покупкой, продажей, чартером яхт позвоните по телефону **+7(918)465-66-44**.

ОГЛАВЛЕНИЕ

ОГЛАВЛЕНИЕ	2
ХАРАКТЕРИСТИКИ	5
Обзор	5
Основная информация	5
Размеры	5
Скорость, вместимость и масса	5
Размещение	6
Корпус и палуба	6
Информация о двигателе	6
ПОДРОБНОЕ ОПИСАНИЕ	7
Vessel Walkthrough	7
Salon	7
Galley	8
Master Stateroom	8
VIP Stateroom	9
Port Stateroom	10
Starboard Stateroom	10
Crew Quarters	10
Lower Helm	11
Fly Bridge	11
Cockpit & Swim Platform	12
Mechanical	12
Electrical	13
Exclusions	14
Исключения	14
Отказ от ответственности	14
ФОТОГРАФИИ	15
Port Stern View	15

Bow	15
Salon	15
Salon	15
Galley - Open View	16
Salon - Electric Keyboard	16
Galley - Closed View	16
Galley	16
Lower Helm	17
Galley	17
Companionway Stairs	17
Lower Helm - Seating	17
Master Stateroom	17
Master Stateroom	17
Master Stateroom Head	18
Master Stateroom Head	18
VIP Stateroom Head	18
VIP Stateroom	18
Port Stateroom	19
Port Stateroom Head	19
Starboard Stateroom	19
Day Head - Starboard	19
Aft Deck - Night	20
Aft Deck	20
Port Passageway	20
Starboard Passageway	20
Stairs - Aft Deck to Fly Bridge	21
Fly Bridge	21
Fly Bridge - Night	21
Fly Bridge - Helm	21

Fly Bridge	21
Fly Bridge - Sunpad	21
Crew Quarters Washer & Dryer	22
Fly Bridge - Grill & Sink	22
Crew Head	22
Crew Quarters	22
Engine Room	22
Engine Room	22
Engine Room	23
Engine Room	23
Engine Room	23
Engine Room	23
Stern	24
КОНТАКТЫ	25
Контактная информация	25
Телефоны	25
Время работы	25
Адрес	25

ХАРАКТЕРИСТИКИ

Обзор

TAI PAN represents the best value in a mid-size, 4-stateroom motor yacht. Efficient caterpillar C32 engines, a well-layed out interior, and large flybridge provide exceptional cruising qualities. Captain and mate-maintained with all the features one would expect on a cruising motor yacht. Many recent updates/upgrades and a motivated seller. A must-see.

Основная информация

Тип судна: Моторная яхта	Модельный год: 2006
Год постройки: 2006	Страна: United States
Верх: Hardtop	Открытая палуба мостика: Да

Размеры

Длина общая: 75' 0" (22.86m)	Ширина: 18' 9" (5.72m)
Мин. осадка: 5' 3" (1.60m)	Макс. осадка: 5' 6" (1.68m)

Скорость, вместимость и масса

Крейс. скорость: 26 Kts. (30 MPH)	Макс. скорость: 34 Kts. (39 MPH)
Чистый вес: 81 Pounds	Вместимость воды: 365 Gallons
Вместимость сточного бака: 120 Gallons	Объем топливного бака: 1525 Gallons

Размещение

Всего кают: 4

Всего коек: 5

Спальные места: 7

Каюты экипажа: 1

Койки экипажа: 2

Спальных мест экипажа: 2

Комм. состав экипажа: 1

Корпус и палуба

Материал корпуса: Fiberglass

Материал палубы: Teak

Комплектация корпуса: Modified V-Hull

Информация о двигателе

Производитель: Caterpillar

Модель: C32

Тип двигателя: Inboard

Тип топлива: Diesel

ПОДРОБНОЕ ОПИСАНИЕ

Vessel Walkthrough

This well-maintained 75' Princess Viking Sport Cruiser, with a very desirable equipment list, features a four-stateroom/four-head floor plan. There are aft crew quarters with accommodations for Captain and Mate, along with a full private head and en-suite shower. A spacious salon and aft deck welcomes you with comfortable seating, natural lighting and elegant details throughout including upgraded interior softgoods and an entertainment center. The galley features an electrically controlled (up and down) partition offering full separation from the formal dining area when required.

The Master Stateroom is full-beam, making this a very comfortable space. Guest stateroom accommodations are well-appointed and each features private en-suite access to the heads. This yacht will provide a comfortable stay for up to 8 guests, plus an additional 2 crew members. The flybridge provides a wonderful area for entertaining and lounging from one of the comfortable seating spaces or sunpads. A custom fiberglass hard-top helps make hot tropical days more comfortable whether cruising or staying at the dock. A full-size tender is located aft and launched via a large and capable Marquipt hydraulic davit.

Salon

Accessed via large stainless steel sliding glass doors, which can be fully opened to the cockpit and complemented with an electrically sliding aft window, the Salon features rich cherry finishes throughout and upgraded softgoods. Owners and guests are provided service with elegant crystal glassware and wine chiller. The 42" flat screen television can be concealed within a custom cabinet via an electrically-controlled lift system. A stainless steel staircase provides quick and easy access to the flybridge as an alternative to the cockpit staircase.

- Home theater system with Bose lifestyle speakers and an electrically actuated 42" flat screen television with satellite
- Bluetooth for music throughout the vessel
- New sofa - 2014 • New carpeting – 2014
- Cherry cocktail table
- Custom wine cooler and refrigerator
- Crystal storage cabinet

- Stainless steel and wood spiral staircase to fly bridge
- Kurzweil electric keyboard
- Cherry wood table
- Cherry wood blinds
- Bronze six-inch barometer and bronze six-inch clock

Galley

Off to port and directly parallel to the formal dining area with service for eight, the galley features an electrically actuated partition for concealment from guests when in the formal dining area. All necessary appliances for guest service is provided and counter space is durable granite and accented by beautiful cherry cabinetry throughout.

- Full-size sub-zero refrigerator with freezer and ice maker
- Microwave convection oven
- Granite countertops
- GFI 110v receptacles
- Double stainless steel sink with InSinkErator garbage disposal
- Electric privacy partition
- Abundant storage drawers and cabinets with cherry finish
- Port side deck access door
- Butler shelf

Master Stateroom

Running the full beam, the Master Stateroom is provided ample natural lighting through three large port holes to port and starboard and is finished throughout with cherry cabinetry. A large king-size bed is mid-ship with a master head and shower located just behind the bulkhead. A large walk-in closet with dressing area and vanity on starboard and a settee finishes off this space.

- Island king bed

- En-suite entertainment center
- Dressing table with vanity and stool
- Walk-in closet with full-length mirror
- Overhead DC lighting throughout
- (3) Large vertical port holes on each side
- Full-size en-suite head
- 50" flat screen television
- Bathtub with Jacuzzi-style jets and shower with multiple massage jets
- Teak and holly inlaid sole in the head area
- Vacuum flush head with bidet
- (2) Reading lamps
- Luxury camel-colored suede wall coverings and overhead
- New carpeting – 2014

VIP Stateroom

- Center-line island queen bed • New headboard and drawer coverings in black Ultraleather • New carpeting - 2014
- Abundant storage and closet space
- En-suite head with a large stall shower and well-appointed counter surfaces
- Entertainment system
- Vanity
- Opening port holes
- Large hanging closet
- Teak and holly sole in the head area
- Camel-colored suede wall coverings and custom overhead material

Port Stateroom

- Single berth on the port side guest stateroom
- Teak and holly inlaid sole in the head area
- Full-length closet
- VacuFlush head
- New carpeting – 2014 • Washer & dryer

Starboard Stateroom

- Single berth to port and Pullman berth to starboard with abundant cabinet and closet storage
- Full-length hanging closet
- Teak and holly flooring in the head area
- New carpeting – 2014

Crew Quarters

- Crew cabin with two berths, storage cabinets and a hanging closet
- Full head with stall shower
- Direct access to the engine room
- Splendido 2000 washer/dryer
- Sharp microwave/convection oven
- Allante refrigerator freezer
- (2) Charles C-power stabilization transformers for port and starboard shore power
- (2) Glendinning cablemasters
- Sharp 12" television
- JVC stereo
- (2) Reading lamps

Lower Helm

- (2) 14" Furuno Z-Touch displays with color plotter, depth finder (dual frequency transducer) and a 96 mile radar
- Furuno NavPilot autopilot
- Furuno RD33
- Side power bow and stern thruster controls
- (2) Caterpillar digital engine displays
- Full engine gauge panel with lighted alarm system
- ACR searchlight
- (2) Leather helm seats with electric adjust

Fly Bridge

- Accessed via the cockpit or salon staircase
- Hard-top with a EZ2CY enclosure - new 2015
- Hot tub- installed 2014
- Sunpad with cushions - new 2014
- Wet bar service with grill
- Furuno RD33 autopilot
- Side power bow and stern thruster control - new joysticks 2015
- ACR spotlight
- (2) Furuno NavNet Z Touch 14" color chart plotter, depth and 96 mile radar displays
- Caterpillar single lever electronic throttle/gear controls
- Fusion CD stereo system with Bluetooth
- Trim tab controls
- Fiberglass radar arch and hardtop with eiesenglass panels front and sides
- Vido rudder angle indicator

- Full-gauge panel with lighted engine alarm system
- Electric grill and sink with storage module
- Insulated refrigerated beverage box
- U-shaped seating with table
- Twin cushioned sunning area with storage
- Marquipt telescoping davit
- Brig tender
- (2) Eight-man Elliott life rafts – 2015

Cockpit & Swim Platform

- Large storage compartments, including a hydraulically-operated storage garage
- Access to engine room/crew quarters via starboard entryway; hydraulic door located aft
- Built-in seating
- Teak flooring
- (2) Glendinning Cablemaster 50 amp shore power
- (2) Lewmar winches
- Port and starboard fiberglass gates for boarding ladder
- Port and starboard gates from swim platform to aft deck area
- Fresh water hot and cold shower
- (2) Large storage areas on the aft deck
- Overhead lights
- (2) Speakers
- Bench seating and custom-built table with 2 chairs

Mechanical

- Advanced acoustical insulation

- Air conditioning, zoned with reverse cycle heat
- Bilge pumps, electric with float and manual switch
- Bow thruster and stern thrusters with 3 station controls
- Contaminated fuel warning system
- Dripless shaft logs
- Engine room blowers
- Exhaust silencer for main engines and generator
- Fire protection system, automatic and manual
- Fuel filters, high capacity duplex with water trap and change-over valve
- Fuel tanks port and starboard in N4 marine grade alloy
- Holding tank, 120 gallons with dockside overboard pump out and gauge
- Holding tank, backup overboard discharge
- Oil change system for engines, gears, and generator
- Power-assisted hydraulic steering system
- 5-Bladed propellers
- Remote fuel shut-offs
- Rudder, high-speed
- Water-flow failure light and alarm at fly bridge and main helm
- Water pump on demand
- Water tank with gauge
- Cockpit control station, starboard side

Electrical

- Onan generator, 27.5 kw/60hz with sound shield with 1888 hours
- Generator gauge package
- Caterpillar C32 engines, 1040 hours; 1650 hp
- (2) 50 Amp/240v dockside services on power reel
- 110v receptacles, GFCI-protected
- Anchor windlass
- Heavy-duty, maintenance-free batteries
- (2) Battery chargers, total of 155 amps
- Bonding system
- Circuit breakers on all circuits
- Buell air horns in place of the standard electric horns
- Intercom system
- (2) Isolation transformers
- Navigation/running lights
- Neutral safety switch for engine controls
- Polarity check system
- Remote battery master switches
- Twin beam searchlight
- Television and phone shore cable inlets

Exclusions

- Jet ski
- Spare 5-blade props

Исключения

При продаже яхты исключаются личные вещи владельца.

Отказ от ответственности

Компания предоставляет описание судна или яхты добросовестно, но не может гарантировать точность этой информации, а также не ручается за техническое состояние. Покупатель должен проинструктировать своих агентов или оценщиков исследовать представленную информацию более подробно, по собственному желанию. Продажа судна или яхты, изменение цены или снятие с продажи будет происходить без предварительного уведомления.

ФОТОГРАФИИ

Port Stern View



Bow



Salon



Salon



Salon - Electric Keyboard



Galley - Open View



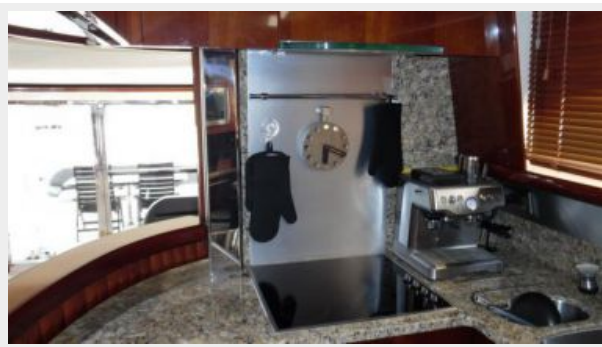
Galley - Closed View



Galley



Galley



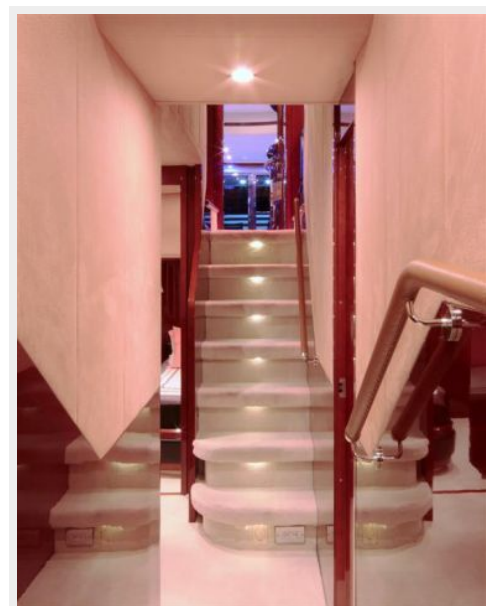
Lower Helm



Lower Helm - Seating



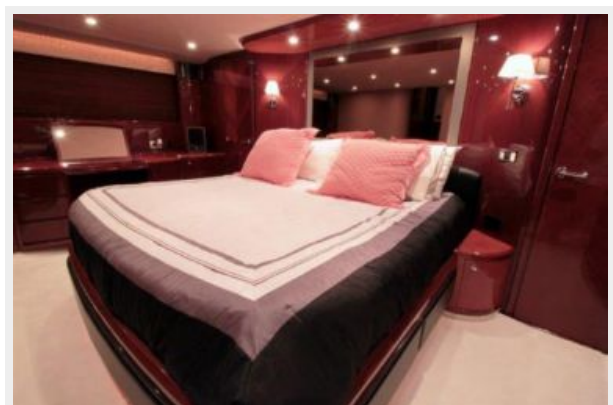
Companionway Stairs



Master Stateroom



Master Stateroom



Master Stateroom Head



Master Stateroom Head



VIP Stateroom



VIP Stateroom Head



Port Stateroom



Port Stateroom Head



Starboard Stateroom



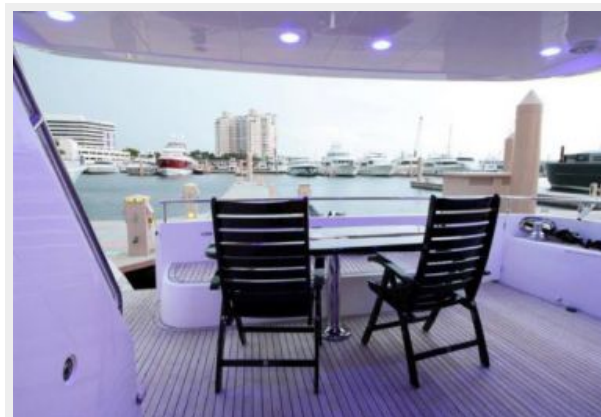
Day Head - Starboard



Aft Deck



Aft Deck - Night



Port Passageway



Starboard Passageway



Stairs - Aft Deck to Fly Bridge



Fly Bridge



Fly Bridge - Night



Fly Bridge - Helm



Fly Bridge



Fly Bridge - Sunpad



Fly Bridge - Grill & Sink



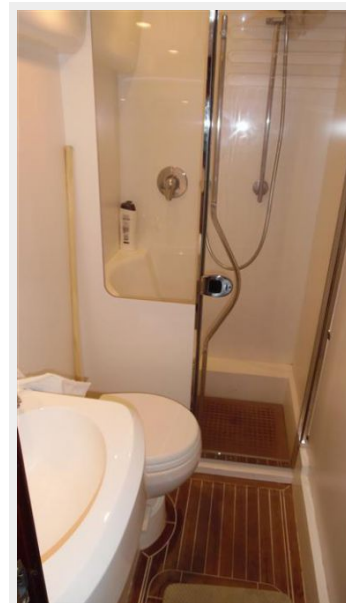
Crew Quarters Washer & Dryer



Crew Quarters



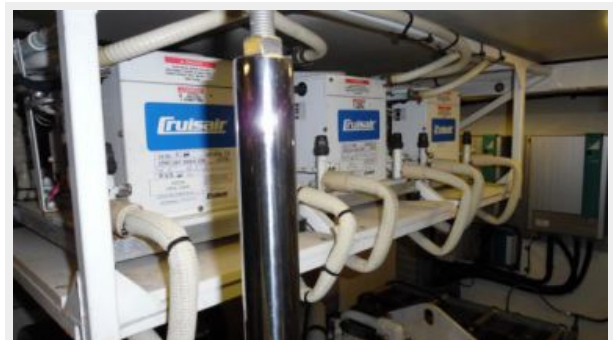
Crew Head



Engine Room



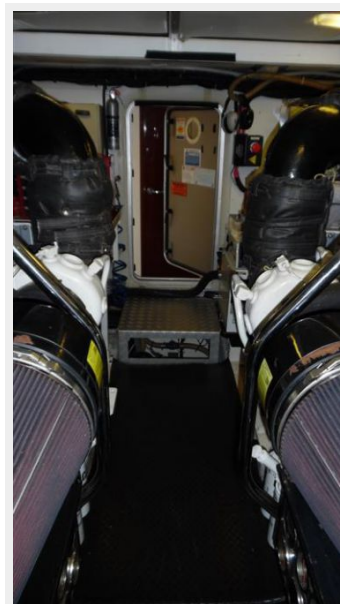
Engine Room



Engine Room



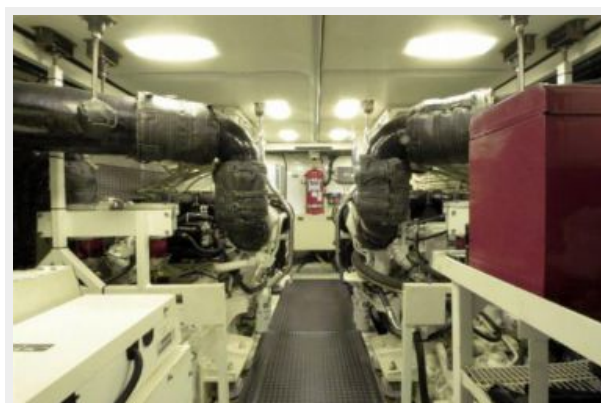
Engine Room



Engine Room



Engine Room



Stern



КОНТАКТЫ

Андрей Шестаков (Andrey Shestakov) – ведущий яхтенный брокер отдела продаж яхт и судов компании Shestakov Yacht Sales Inc. Официальный представитель Shestakov Yacht Sales Inc. для русскоговорящих клиентов в центральном офисе компании в Майами/Форт Лодердейл/Флорида/США.

Контактная информация

Email: andrey@shestakovyachtsales.com

Web: shestakovyachtsales.com

Телефоны

Краснодарский край: **+7(918)465-66-44**

США, Майами, Флорида: **+1(954)274-4435**

Время работы

Понедельник – Суббота: **9:00 - 21:00**
EDT

Воскресенье: **Закрето**

Адрес



Harbour Towne Marina, 850 NE 3rd St,
STE 213, Dania, FL 33004