

IRISH TWIN — VIKING



Builder: VIKING

Year Built: 2013

Model: Sport Fisherman

Price: PRICE ON APPLICATION

Location: United States

LOA: 55' 0" (16.76m)

Beam: 17' 9" (5.41m)

Max Draft: 5' 1" (1.55m)

Cruise Speed: 34 Kts. (39 MPH)

Max Speed: 42 Kts. (48 MPH)

Our experienced yacht broker, Andrey Shestakov, will help you choose and buy a yacht that best suits your needs **Irish Twin — VIKING** from our catalogue. Presently, at Shestakov Yacht Sales Inc., we have a wide variety of yachts available on our sale's list. We also work in close contact with all the big yacht manufacturers from all over the world.

If you would like to buy a yacht **Irish Twin — VIKING** or would like help answering any questions concerning purchasing, selling or chartering a yacht, please call **+1(954)274-4435**

TABLE OF CONTENTS

TABLE OF CONTENTS	2
SPECIFICATIONS	4
Overview	4
Basic Information	4
Dimensions	4
Speed, Capacities and Weight	5
Accommodations	5
Hull and Deck Information	5
DETAILED INFORMATION	6
Salon	6
Galley/Dinette	6
Décor	6
Companionway	7
Master Stateroom	7
Master Head	7
VIP Stateroom	8
Guest Stateroom	8
Guest Heads	8
Cockpit	9
Flybridge	9
Palm Beach Tower	10
Deck/Exterior	11
Electronics	11
Electrical System	13
Engine Room/Mechanical	13
Exclusions	14
Disclaimer	14
PHOTOS	15

Viking 55 Convertible Salon	15
Viking 55 Convertible Galley	15
Viking 55 Convertible Master Stateroom	15
Viking 55 Convertible Galley/Dinette	15
Viking 55 Convertible Salon	15
Viking 55 Convertible Salon	15
Viking 55 Convertible Master Head	16
Viking 55 Convertible VIP Stateroom	16
Viking 55 Convertible Guest Stateroom	16
Viking 55 Convertible Guest Stateroom	16
Viking 55 Convertible Guest Head	17
Viking 55 Convertible Helm	17
Viking 55 Convertible Flybridge	17
Viking 55 Convertible Cockpit	17
Viking 55 Convertible Profile	17
Viking 55 Convertible Profile	17
Viking 55 Convertible Profile	18
Viking 55 Convertible Profile	18
Viking 55 Convertible Running Profile	18
Viking 55 Convertible	18
Viking 55 Convertible	18
CONTACTS	19
Contact details	19
Telephones	19
Office hours	19
Address	19

SPECIFICATIONS

Overview

This late model 55' Viking Convertible offers the best of Viking Yachts in a fully rigged and ready to fish package. She comes equipped with upgraded twin MAN 1800 HP engines to get you out faster and in quicker. This is a rare, hard to find boat with the MAN V12 1800 CRMN engines that were a \$250,000 net option upgrade over the standard engines.

Included with this vessel is an Extended Service Plan until July, 2019. Inquire for full details.

3200 Hours Service Recently Completed.

Loaded with an AME electronics package and a Palm Beach Tower with the luxury you expect from a Viking Sport Fishing Yacht. Many upgrades are found inside and out, including full teak cockpit, coaming & cover boards and interior finishes. Unique touches include matte black tower sunshade and interior control boxes, custom rod storage, additional fuel tank for a total of three and custom blue hull color.

Basic Information

Category: Sport Fisherman

Model Year: 2013

Year Built: 2013

Country: United States

Dimensions

LOA: 55' 0" (16.76m)

LWL: 48' 5" (14.76m)

Beam: 17' 9" (5.41m)

Max Draft: 5' 1" (1.55m)

MFG Length: 55' 0" (16.76m)

Speed, Capacities and Weight

Cruise Speed: 34 Kts. (39 MPH)

Cruise Speed RPM: 1900 Kts.

Max Speed: 42 Kts. (48 MPH)

Max Speed RPM: 2300 Kts.

Displacement: 777000 Pounds

Water Capacity: 225 Gallons

Holding Tank: 100 Gallons

Fuel Capacity: 1619 Gallons

Accommodations

Total Cabins: 3

Total Heads: 3

Hull and Deck Information

Hull Material: Fiberglass

DETAILED INFORMATION

Salon

- Costa Canvas Carpet Runner
- Prestige Décor
- Salon door with electric door opener
- Custom Amtico Flooring in Dark Walnut
- Icemaker
- Upgraded Dewberry L-shaped lounge
- 46" Samsung Flat Panel TV
- Bose system with custom surround sound and Blu-Ray player
- KVH TracVision with three Direct TV / DSS receiver
- Teak cabinetry
- Teak Coffee Table
- Clear Ice-Maker
- Teak Strips in Headliner
- Overhead LED lighting
- High gloss finish
- Blinds, silhouette

Galley/Dinette

- Custom Amtico flooring in Dark Walnut
- Granite countertops in Cambria
- Satin Nickel Faucet
- Kenyon Electric range, 4-burner
- Garbage disposal
- (2) Refrigerator and (2) freezer, Sub-Zero, large capacity, deep-drawer under-counter style
- Icemaker in freezer
- Stainless Steel Sink
- Storage cabinets in upper and lower galley, pullout drawers with slides for smooth movement
- Teak Pedestal Bar Stools with Ultraleather
- Sharp Convection Microwave
- Mirrored Back Splash
- U-Shaped Dinette with Teak Table

Décor

- Wrapped Hatch Carpet Installation

- Custom Wallpaper Material
- Custom Headliner Material Throughout (Moccasin Chamois)
- Cambria Granite countertops Upgraded Throughout
- Brushed Nickel Hardware Throughout
- Brushed Nickel Cover Plates for Switches & Receptacles
- LED Interior Lights Throughout
- Fabrica, Carpet PANDORA PD-16 PALOMINO
- Bar Stools Ultraleather Deep Bronze Welt
- Helm Chairs w/ Ultraleather Buckskin
- Custom Sofa Upgrade Dewberry Style in Deep Bronze
- Bridge & Mezzanine Cushion Material Ultraleather Buckskin

Companionway

- Central vacuum
- Lighting, overhead LED
- Vertical Teak Strips Between Wall Panels
- Costa Canvas Runner
- Ariston Clothes Washer
- Ariston Clothes Dryer

Master Stateroom

- Upgraded queen mattress with #4 System
- Night table lamps, hardwire
- AC with reverse cycle heat and temperature control
- Bed, queen-size, walk-around, custom full height headboard
- Drawer storage under bed, (2) large drawers
- Teak End tables
- Hanging locker
- Entry credenza with drawer storage
- Lighting, overhead LED
- 32" Samsung flat panel TV
- Stereo speakers recessed in tied into salon stereo with remote control

Master Head

- Custom Amtico flooring in Dark Walnut
- Granite vanity top in Cambria with Bull Nose Edge
- AC/heat with vent in soffit
- Satin nickel faucet

- Head, electric, Sealand series
- Lower vanity with teak face
- Mirrored wall behind upper vanity
- Stall shower, satin nickel fixtures
- Towel bars and rings, satin nickel

VIP Stateroom

- VIP crossover forward
- 22" Samsung Flat Panel TV
- Hanging locker
- Air conditioning with reverse cycle heat with temperature control
- Lighting, overhead LED
- Private access to head
- Stereo speakers recessed tied into salon stereo with remote control
- Storage cabinets, port and starboard sides
- Teak shelf

Guest Stateroom

- AC with reverse cycle heat with temperature control
- Bed, side by side bunks
- Hanging locker
- Lighting, overhead LED
- Stereo speakers recessed tied into salon stereo with remote control
- Storage cabinet above outboard bunk
- Storage drawer located under hanging locker
- Private access to head

Guest Heads

- AC/heat with vent in soffit
- Granite vanity in Cambria
- Satin nickel finishes
- Custom Amtico flooring
- Head, electric, Sealand series
- Lights, overhead LED
- Lower vanity with teak face
- Mirrored wall behind upper vanity
- Stall shower, satin nickel fixtures
- Towel bars and rings, satin nickel

Cockpit

- Live well in sole
- Refrigerated cockpit step box
- Refrigerated port mezzanine undermounted step box
- Live well in transom
- Cable TV and telephone connections
- Two 24V Outlets Forward Under Coaming, One on each side
- Dockside electric connection - 50 amp/220V electric retractable Glendinning Cablemaster
- Engine room access
- Extended flybridge overhang for shade
- Freshwater and saltwater washdown
- Ladder to flybridge, one-piece
- Molded nonskid deck
- Observation mezzanine, port aft facing lounge in Ultraleather
- Recessed in deck fishbox to starboard
- Recessed in deck storage boxes to port
- Rod holders, Rupp (4) stainless steel
- Self bailing cockpit
- Side locker with storage for gaffs and or other accessories located in port side locker with hinged door
- Four Tackle Drawers
- Split lids for fishboxes
- Stereo speakers tied into salon stereo with remote control Ship Aboard transom swim steps
- Transom door with lift gate
- Teak Cockpit, with Coaming and Cover Boards
- Murray Teak Fighting Chair
- Eskimo Ice Chipper with discharge in starboard mezzanine box
- Transom coaming solid with fishbox
- Bait trays in port lower mezzanine box
- Tri-colored lights (red, white, blue)
- Blue LED rope lighting under cockpit coaming
- Cockpit Sunshade

Flybridge

- Center walk around helm
- Electronic storage in raised pod with additional storage
- Electronic trolling valves
- Trim tab controls mounted at console
- Both Radio Boxes and under lids painted in black
- Extended overhang for extra room to move around behind helm and companion seats
- Electronic single-lever controls for helm pod

- Fire system control with automatic and manual discharge and override system located at console
- Lounge seating to port and starboard in Ultraleather Buck Skin
- Nonskid deck molded for traction and durability
- Bridge freezer box, jumpseat backrest
- Drinkbox, refrigerated
- Release teak helm pod
- ZF engine controls
- Helm chairs, (2) Murray Elite series
- Rod racks under bench seats
- Compass in recessed electronics box
- Stereo speakers tied into stereo system in salon, flush mounted aft ends of bridge with remote control
- Under helm access with lights and storage room
- (2) Recessed Electric Teaser Reels MIYA EPOCH US9-HD 24V

Palm Beach Tower

- Tuna Tower w/Molded Top 55' Convertible 7' Gap, Brushed Pipe
- (2) Antenna, Stands-offs 3 Sided Track on bimini rail
- Radar Pod, Bullet Style, Sliding Door, Bracket & Runs for Teaser Reels
- Molded Standing Platform w/ Coupler Box On Platform
- Molded 2 in 1 Lumitec LED Spreader Light Pod
- Molded Single Lumitec LED Spreader Light Fwd Platform
- Control Box 63" w/Flush Mounted Compass
- Recessed Electronics Boxes with
- Tower Sunshade Molded w/ Internal Tracks, 3 Welded Antenna Mounts
- Antenna Mount Sat TV Dome molded fiberglass
- Antenna Mount Sat V3 dome on hardtop molded fiberglass
- Bridge Rail 3 sided, Leg to Leg, Double Aft to Inner Legs
- (6) Rod Holders Polished Weld to Aft Bridge Rail, PBT Style
- (6) Rod Holders Polished Aft Legs 3-P-3-S, PBT Style
- Controls & Steering MAN (No LCD on Readout)
- 41' Outrigger Rupp "Big Riggs HD", 41' 3 Spreader Bridge Release Super Aft Bar
- Rigger Locks
- Center Rupp Rigger
- Set of Rupp Rollers IPO Eye bolts for pair of outriggers
- (2) Rupp Teaser line collars with eye bolts
- Enclosure 3 Sided Track to Track, Aft edge of Helm, EZ2CY
- Powder Coated Aluminum Flangeless Track
- 3 Air Vent Fwd Top
- Nav. Lights P & S Molded
- Stern Light Molded

- Drop Down Electronics Box w/Electric Actuator
- Wash Down Water in Tower
- (2) Recessed Tri-Color Lights in Tower Platform
- (2) Recessed Tri-Color Lights in Tower Sunshade
- (6) Recessed Lights, (3) Spreader Lights, Teaser Reels, Masthead/Anchor Light, Bond Tower
- Recessed lights in tower platform & sunshade
- Tower sunshade frame in black
- Top of control box painted in satin black
- Upgraded tower fwd X brace, side diagonals & hardtop braces to contour style
- Control Box cover
- (2) Release Outrigger S/S grommets mounted cockpit gunnels

Deck/Exterior

- Fresh Water Washdown at Bow Anchor Locker
- Awlgrip Anchor Locker
- Recessed Trim Tab Covers
- Side Mounted Handrails
- Rubrail Painted White

Electronics

RADAR

- RADAR FURUNO NAVNET 3D DRS25A 25KW 96NM LESS ARRAY
- RADAR ARRAY 6' FURUNO #XN13A/6
- PLOTTER FURUNO NAVNET 3D MFDBB PROCESSOR
- GPS ANTENNA FURUNO GP330B
- STARTECH ST122DVI
- MONITOR GLASS BRIDGE LCD 15" KEPMGB

PLOTTER

- GARMIN GPSMAP6208
- MOUNT IN DROP DOWN BOX
- VIEW ON HELM DISPLAYS
- CAT5 TRANSMITTER VTT001 EXTRON
- CAT5 RECEIVER VTR001 EXTRON

NAVNET PERIPHERALS

- ETHERNET HUB FURUNO NAVNET 3D HUB

- SIRIUS SAT WEATHER MODULE BBWX2
- SAT RADIO SIRIUS ANTENNA SHAKE SRA-40
- AIS FURUNO FA50 BLACK BOX 12/24VDC
- SPLITTER VHF-AIS DIGITAL YACHT SPL2000
- LAN CABLE FURUNO 5M RJ45 #000-167-176

SOUNDER

- SOUNDER FURUNO FCV1200BB W/LANDSCAPE CONTROL
- XDCR 2KW 50KHZ FURUNO CA50BL-12HR
- XDCR 2KW 200KHZ RUBBER COATED
- FURUNO #CA200B-8B
- VIEW SOUNDER ON HELM DISPLAYS

SOUNDER 2

- SOUNDER, GARMIN GSD-26
- 1XDCR AIRMAR PM265-LM CHIRP

DIGITAL DEPTH/TEMP

- DISPLAY, FURUNO RD33 DATA ORGANIZER INC
- XDCR HI-PREC.TMP/2 FURUNO #235DHT-LMSE INC

AUTOPILOT

- SIMRAD AC12 AUTOPILOT COMPUTER
- RUDDER FEEDBACK SIMRAD RF25 W/ 5M SIMNET
- SIMRAD RC42 RATE COMPASS W/AAC 22090195
- AUTOPILOT CONTROL UNIT SIMRAD AP24

VHF

- VHF RADIO ICOM IC-M604 BLACK INC
- VHF RADIO ICOM IC-M604 BLACK
- VHF FLUSH MOUNT F/502,602,802
- ICOM #MB-75
- ANTENNA PHASE III 6018 18' VHF
- SHAKESPEARE
- ANTENNA MOUNT RUPP AME TOWER/HARDTOP PAK
- ANTENNA STANDOFF 3/4" PIPE
- VHF SPEAKER EXTERNAL MB-41 BLACK

STEREO

- STEREO 12V FUSION MS-IP700
- STEREO SPEAKER JL AUDIO 7.7" COMPONENT

- BRIDGE SPEAKERS
- AMPLIFIER JL AUDIO MHD600/4 4-CHAN

SATCOM

- TRACPHONE V3, RACKMOUNT ACU AND MODEM 01
- KVH V3 ANTENNA, TAPERED
- PHONE, PANASONIC 2-LINE CORDLESS
- OFFICE MACHINE FAX/PRINTER/SCANNER/COPIER

TOWER

- PLOTTER, GARMIN GPSMAP6208
- VHF COMMAND MIC ICOM HM-162 B BLACK
- VHF EXTENSION COMMAND MIC ICOM OPC-1541
- (4) UNDERWATER LIGHTS, LUMISHORE, LIGHTS WITH MULTICOLOR CONTROLLER

CAMERA SYSTEM

- CAMERA MINI BALL WITH IR
- ENGINE ROOM CAMERA MOUNTED LOOKING AFT
- CAMERA HELM DISPLAY

Electrical System

- 24V DC ship's service throughout
- 24V/12V power supply with breakers
- Batteries, (2) independent 24V banks mounted in fiberglass storage box
- Battery chargers, (2) with thermal cutoff and switching system breakers
- Battery parallel system for main engines and generator start
- Engine room lights, AC and DC with switch at engine room entrance
- Generator, diesel - Onan 21.5 kW
- Glendinning Cablemaster
- Master Electrical control panel located in salon with 12/24V and 120/220V circuit breakers
- Voltage stabilizer isolation transformer on cable masters for more consistent cleaner voltage

Engine Room/Mechanical

- 700 GPD Watermaker with auto backflush
- Air conditioning - direct expansion zoned reverse cycle heat for complete climate control throughout the interior and with individual temperature controls for staterooms and salon
- Twin MAN V12 1800 CRMN with 1800 bhp Each (\$250k optional upgrade)

- Bilge pumps with additional clean out pumps
- Centralized sea-water system with dedicated seacock, strainer, pump and distribution manifold for seawater cooled systems and live wells
- Engine room entrance and remote mounted engine start and stop switches for easier accessibility
- External sea strainers for engine pick ups
- Fire suppression system
- Fuel priming pumps
- Engine Room Camera
- Fuel transfer system
- Oil changing system
- Racor fuel/water separators for main engine and generator
- Water heater

Exclusions

Owner's personal belongings.

Disclaimer

The Company offers the details of this vessel or yacht in good faith but cannot guarantee or warrant the accuracy of this information nor warrant the condition of the vessel. A buyer should instruct his representatives, agents, or his surveyors, to investigate such details as the buyer desires validated. This vessel or yacht is offered subject to prior sale, price change, or withdrawal without notice.

PHOTOS

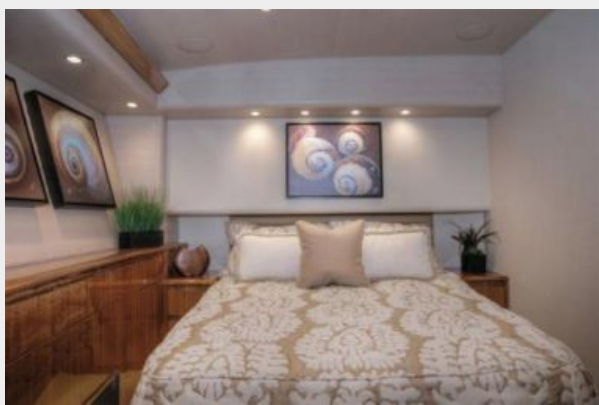
Viking 55 Convertible Salon



Viking 55 Convertible Galley



Viking 55 Convertible Master Stateroom



Viking 55 Convertible Galley/Dinette



Viking 55 Convertible Salon



Viking 55 Convertible Salon



Viking 55 Convertible Master Head



Viking 55 Convertible VIP Stateroom



Viking 55 Convertible Guest Stateroom

Viking 55 Convertible Guest Stateroom



Viking 55 Convertible Guest Head



Viking 55 Convertible Helm



Viking 55 Convertible Flybridge



Viking 55 Convertible Cockpit



Viking 55 Convertible Profile



Viking 55 Convertible Profile



Viking 55 Convertible Profile



Viking 55 Convertible Profile



Viking 55 Convertible Running Profile



Viking 55 Convertible



Viking 55 Convertible



CONTACTS

Andrey Shestakov, leading yacht broker of the sales department of Shestakov Yacht Sales Inc. Shestakov Yacht Sales Inc., the official representative of the Miami/Fort Lauderdale FL headquarters.

Contact details

Email: andrey@shestakovyachtsales.com

Web: shestakovyachtsales.com/en/

Telephones

USA: +1(954)274-4435

Office hours

Monday – Saturday: **9:00 - 21:00** EDT

Sunday: **closed**

Address



Harbour Towne Marina, 850 NE 3rd St,
STE 213, Dania, FL 33004