

LEGACY — VIKING



Builder: VIKING

LOA: 47' 0" (14.33m)

Year Built: 1996

Beam: 15' 6" (4.72m)

Model: Sport Fisherman

Price: PRICE ON APPLICATION

Location: United States

Our experienced yacht broker, Andrey Shestakov, will help you choose and buy a yacht that best suits your needs **Legacy — VIKING** from our catalogue. Presently, at Shestakov Yacht Sales Inc., we have a wide variety of yachts available on our sale's list. We also work in close contact with all the big yacht manufacturers from all over the world.

If you would like to buy a yacht **Legacy — VIKING** or would like help answering any questions concerning purchasing, selling or chartering a yacht, please call **+1(954)274-4435**

TABLE OF CONTENTS

TABLE OF CONTENTS	2
SPECIFICATIONS	3
Overview	3
Basic Information	3
Dimensions	3
Speed, Capacities and Weight	3
Accommodations	3
Hull and Deck Information	3
Engine Information	4
DETAILED INFORMATION	5
Vessel Walkthrough	5
Galley	5
Accommodations	5
Electronics	5
Recent Upgrades	6
Exclusions	6
Disclaimer	6
PHOTOS	7
CONTACTS	13
Contact details	13
Telephones	13
Office hours	13
Address	13

SPECIFICATIONS

Overview

Legacy is a 1996 47 viking with 800 HP man engines, they where completely rebuilt about 400 hours ago. The boat has had constant upgrades since bought by current owner last fall.new electronics have been installed,the bottom has been completely blasted and redone with fresh paint, prop speed on all running gear and 4 new undrewater lights. please see complete listing for all the upgrades that have been done.Call today for a showing!!

Basic Information

Category: Sport Fisherman

Sub Category: Convertible

Model Year: 1996

Year Built: 1996

Country: United States

Dimensions

LOA: 47' 0" (14.33m)

Beam: 15' 6" (4.72m)

Speed, Capacities and Weight

Water Capacity: 160 Gallons

Fuel Capacity: 350 Gallons

Accommodations

Total Cabins: 2

Hull and Deck Information

Hull Material: Fiberglass

Engine Information

Engines: 2

Manufacturer: MAN

Model: D2848LE403

Engine Type: Inboard

Fuel Type: Diesel

DETAILED INFORMATION

Vessel Walkthrough

Sleeps 4 guests in 2 staterooms.

The salon, galley and dinette are on the same upper level, which is very unique for a convertible under 50? feet. The salon is entered from the cockpit through a new sliding glass door to starboard. To port is an L-shaped convertible ultra-leather sofa ? electric panel to starboard. Deluxe décor. All raised panel cabinet doors.

Forward is the galley area open to Salon - with Corian counter tops, a U-shaped dinette with storage underneath and the entertainment center to starboard. Raised panel storage throughout

Forward and down three steps is the guest stateroom to starboard with upper/lower berths and adjoining head with shower w/ storage drawers under and a hanging locker. The head is also accessed from the companionway. Further forward is the spacious master stateroom with walk-around centerline queen-size berth and private head with stall shower, vanity sink, and storage beneath.

Galley

The galley is located up and on Port side.

- Full sized refrigerator and freezer.
- 2- burner electric stove.
- microwave/convection oven.
- garbage disposal.
- corian countertop with sink.
- u-shaped dinette with storage underneath and high gloss teak table.
- new Ariston washer dryer installed in 2015.

Accommodations

The starboard stateroom is located at the bottom of stairs from salon on starboard side. It has two single upper lower bunks with direct access to head and shower and hanging locker.

The master stateroom is located in Bow of the boat and features an island berth, roomy cedar hanging locker, hatch to fordeck. the private adjoining head features an enclosed shower, exhaust fan, sink and plenty of storage.

Electronics

- 3- Garmin 7212 touchscreen GPS Plotter units.
- Chirp sounder with 3KW transducer.
- Furuno GP-32.
- Furuno T-2000 temp.
- Icom M-506 VHF.
- Sea 156 VHF.
- Simrad AP 28 auto pilot.
- Kenwood stereo with new speakers,XM ipod.
- Epirb.
- Xm weather.
- Garmin HD radar.
- Onan 15 kW generator (2960) hrs.

Recent Upgrades

- New washer and dryer.
- 4-underwater lights.
- all lighting in cockpit and bridge new LED.
- New helm Layout for the recent electronics.
- Bottom Blasted and new paint and barrier coat applied.
- All A/c units serviced.
- new Flatscreen tv in salon.
- New batterys and charger.
- engines and transmissions serviced.
- Topside just buffed and waxed.
- new caulking in cockpit.

Exclusions

Owner's personal belongings.

Disclaimer

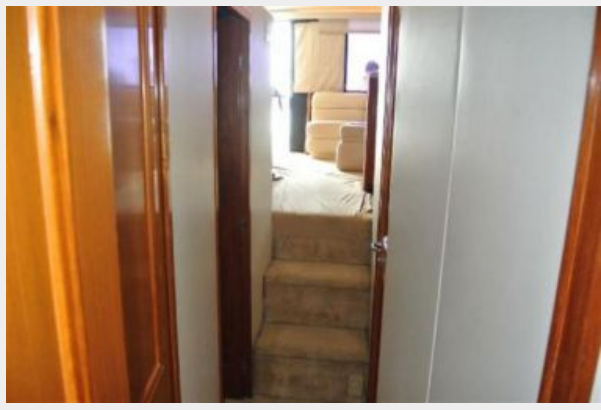
The Company offers the details of this vessel or yacht in good faith but cannot guarantee or warrant the accuracy of this information nor warrant the condition of the vessel. A buyer should instruct his representatives, agents, or his surveyors, to investigate such details as the buyer desires validated. This vessel or yacht is offered subject to prior sale, price change, or withdrawal without notice.

PHOTOS













CONTACTS

Andrey Shestakov, leading yacht broker of the sales department of Shestakov Yacht Sales Inc. Shestakov Yacht Sales Inc., the official representative of the Miami/Fort Lauderdale FL headquarters.

Contact details

Email: andrey@shestakovyachtsales.com

Web: shestakovyachtsales.com/en/

Telephones

USA: +1(954)274-4435

Office hours

Monday – Saturday: **9:00 - 21:00** EDT

Sunday: **closed**

Address



Harbour Towne Marina, 850 NE 3rd St,
STE 213, Dania, FL 33004