

FOREVER YOUNG — HARGRAVE



Судостроитель: HARGRAVE

Год постройки: 2003

Модель: Моторная яхта

Цена: **ЦЕНА ЯХТЫ ПО ЗАПРОСУ**

Местонахождение: United States

Длина общая: 97' 0" (29.57m)

Ширина: 20' 0" (6.10m)

Мин. осадка: 5' 5" (1.65m)

Макс. осадка: 6' 0" (1.83m)

Крейс. скорость: 16 Kts. (18 MPH)

Макс. скорость: 20 Kts. (23 MPH)

Купить **Forever Young — HARGRAVE** а также выбрать подходящую вам яхту из нашего каталога яхт вам поможет опытный яхтенный брокер Андрей Шестаков. На сегодняшний день компания **Shestakov Yacht Sales Inc.** имеет большое количество яхт в собственном списке продаж, а также тесно сотрудничает со всеми крупными яхтенными производителями по всему миру.

Для того чтобы купить яхту **Forever Young — HARGRAVE** а также проконсультироваться по любому вопросу связанному с покупкой, продажей, чартером яхт позвоните по телефону **+7(918)465-66-44**.

ОГЛАВЛЕНИЕ

ОГЛАВЛЕНИЕ	2
ХАРАКТЕРИСТИКИ	4
Обзор	4
Основная информация	4
Размеры	4
Скорость, вместимость и масса	4
Размещение	5
Корпус и палуба	5
Информация о двигателе	5
ПОДРОБНОЕ ОПИСАНИЕ	6
Introduction - Refit 2012	6
Refit Upgrades 2012	6
Salon	6
Audio & Visual Equipment	7
Day Head	7
Dining	8
Country Galley	8
Appliances & Features	8
Master Stateroom	9
Guest Stateroom - Queen	10
Guest Stateroom - Twins & Pullman	10
Guest Stateroom - Queen VIP Forward	11
Laundry Area	11
Pilothouse	11
Electronics & Navigation	12
Engine Room & Mechanical Equipment	12
Electrical Equipment	13
Safety, Fire & Emergency Equipment	14

Hull & Deck	14
Aft Deck	14
Cockpit & Swim Platform	15
Bow	15
Fly Bridge	16
Captain & Crew	16
Exclusions	16
Исключения	17
Отказ от ответственности	17
ФОТОГРАФИИ	18
КОНТАКТЫ	30
Контактная информация	30
Телефоны	30
Время работы	30
Адрес	30

ХАРАКТЕРИСТИКИ

Обзор

Forever Young is a fine example of the exceptional craftsmanship Hargrave Yachts is renowned for. She features 4 Guest Staterooms (1 King, 2 Queens, 3 single beds) plus Crew Accommodations for up to 4 aft. She had a major refit in 2012 that makes her by far the best deal on the market! Powered by popular CAT 3412e engines, she is sure to take her owners to places they have only dreamed!

Основная информация

Тип судна: Моторная яхта

Модельный год: 2003

Год постройки: 2003

Год обновления: 2012

Страна: United States

Размеры

Длина общая: 97' 0" (29.57m)

Ширина: 20' 0" (6.10m)

Мин. осадка: 5' 5" (1.65m)

Макс. осадка: 6' 0" (1.83m)

Скорость, вместимость и масса

Крейс. скорость: 16 Kts. (18 MPH)

Макс. скорость: 20 Kts. (23 MPH)

Чистый вес: 110 Pounds

Вместимость воды: 600 Gallons

Вместимость сточного бака: 150 Gallons **Объем топливного бака:** 2530 Gallons

Размещение

Всего кают: 4

Спальные места: 9

Всего ком. состава: 5

Каюта капитана: Да

Каюты экипажа: 3

Койки экипажа: 4

Спальных мест экипажа: 4

Корпус и палуба

Материал корпуса: Fiberglass

Информация о двигателе

Двигатели: 2

Производитель: Caterpillar

Модель: 3412E

Тип двигателя: Inboard

Тип топлива: Diesel

ПОДРОБНОЕ ОПИСАНИЕ

Introduction - Refit 2012

This vessel just had her annual yard period in Oct. 2015. She is ready for her next owner to go cruising. This classic vessel is ready for cruising with her recent REFIT in 2012. Furnished with contemporary interior styling using neutral tones and cherry wood. This yacht features 4 staterooms plus crew aft, walk-around decks, raised pilothouse, open fly bridge with large hardtop, a cockpit with new teak decks, underwater lights and an upgraded galley with all new appliances. This large volume, 4 stateroom boat sleeps 9 owners and guests, all with private en suite heads. Great interior volume, lots of outdoor space with an incredible fly bridge. Her profile has timeless classic lines.

Refit Upgrades 2012

- New soft goods throughout boat
- New wall coverings throughout boat
- Designer Fabrica carpet throughout boat
- Interior LED overhead and walkway lights throughout boat
- Exterior LED overhead and walkway lights
- Added new LED rope lighting
- All Vimar switches replaced
- All new TV's
- Superb entertainment system
- RTI Remote programming system for aft deck & salon
- All new galley appliances
- New granite table in galley
- I-Pod docking stations
- Added custom sunning pad on bow
- Upgraded to Glenndining electronic controls
- Added LED lighting to name boards
- Replaced aft deck teak decks
- Replaced cockpit teak decks
- Exterior paint 2010
- Re-varnished cap rails
- New marble flooring in master foyer
- Complete bottom Job - Oct. 2015
- Engine serviced
- Fall wax job

Salon

As you enter the salon from the aft deck through her large glass pneumatic doors with sensor glide, there is an inviting feel with cherry wood, taupe and pewter palette. To the port side is a sectional leather sofa and contemporary recliner. To starboard are two swivel barrel chairs and a pop up TV. The salon and dining areas are open to each other and separated by a low profile buffet.

- Cherry wood – satin finish
- Designer Carpet – new 2012
- Hunter Douglas pull down shades
- New valances – 2012
- Granite top end table with Lamp
- Art work – new 2012
- (1) contemporary recliner in slate gray – new 2012
- (2) barrel chairs with new upholstery - 2012
- Leather sectional sofa w/built in storage – new 2012
- Ottoman with storage
- LED overhead lights
- Overhead recessed mirror with contemporary fixture
- Built in corner entertainment storage
- Pop up TV cabinet
- Mini fridge –new 2012 in salon buffet

Audio & Visual Equipment

There is a superb entertainment system throughout boat.

- Samsung 46' LCD TV in salon – new 2012
- Denon integrated network AV receiver AVR-2312ci – new 2012
- Samsung Blu-ray disc player – new 2012
- Sirius Radio – new 2012
- Direct TV in each stateroom (crew, pilothouse and galley are modulated)
- I-pod docking stations

Day Head

Forward of the dining area to the starboard side is a day head with a walkway to the raised pilothouse and forward of that is the large country galley.

- Granite counter
- Decorative SS designer sink – new 2012
- Upgraded fixtures – new 2012
- New designer wall covering – new 2012
- Mirror

- Marble floor
- Royal Flush Head Hunter head
- Wood cabinet base
- Overhead mirror
- LED overhead light – new 2012

Dining

Moving forward from the salon is the formal dining room which becomes an extension of the salon. The forward dining bulkhead has a custom cherry wood buffet with granite top, below is storage for fluted glasses. In the corner to the port side of the dining there is a desk with new leather top and additional storage to the starboard is another long buffet. Over the dining table is a mirror with burl wood frame and a light fixture (new 2012). There is a pocket door to the starboard side offering privacy to the dining area from the galley.

- Smoke glass oblong dining table with wood base, seating for 8
- Upholstered dining chairs (8)– new 2012
- Designer carpet – new 2012
- Cherry wood buffet storage with granite top
- Closet storage with shelves
- China storage
- Desk
- Hunter Douglas shades
- Refrigerator in cabinet -new 2012

Country Galley

The open country galley features all new stainless steel appliances (2012), white cabinets and an Island Granite counter with storage and swivel out bar stools. The dining table has booth seating with new upholstery and storage.

Appliances & Features

- GE Profile side-by-side SS refrigerator with temperature control, ice maker & water in door - new 2012
- GE Profile stove and oven with convection-new 2012
- GE Profile microwave -new 2012
- Bosch Silence Plus 48DBA dishwasher - new 2012
- Insta-hot at sink - new 2012
- Insinkerator food waste disposal extremely quiet -new 2012
- Trash compactor - new 2012

- KitchenAid Toaster oven
- Wine cooler - new 2012
- 26" Samsung TV in galley -new 2012
- Storage forward, cherry wood, (3) swing out counter stools, overhead LED lights
- Teak vinyl floor
- White cabinets
- Cherry wood walls
- Pantry with etched glass door
- Windows with valance and shades
- Granite countertop
- Granite galley dining table with SS base
- Storage forward of galley seating
- Kohler sink with fixture
- Soap dispenser
- Phone

Master Stateroom

W/ His and Her Heads - Double Door Entry - His and Her walk-in closet

Below and mid-ship accessed down the stairs off the dining is the master stateroom as well as two guests staterooms. The stairs are carpeted (new 2012) with LED step lights and overhead, a wood hand rail and designer wall covering (new 2012), which leads you to the beautiful marble foyer (new 2012).

In the foyer are two storage closets and a stored stack GE Spacemaker washer and dryer (duplicated set in crew area), recessed overhead mirror with wood design frame, a shelf with storage beneath. The master state features:

- Double door entry
- His and Her closets
- King berth with storage drawers beneath and rope lighting
- GE Spacemaker stack washer & dryer (in foyer)
- Bose surround sound speakers with I-phone docking
- 32" LG TV - new 2012
- Safe
- Bed cover, decorative throw pillows –new 2012
- Upholstered headboard with overhead reading lights and decorative wood framing
- (2) sconce lights – new 2012 over decorative burl wood facing
- Built in upholstered sofa- new 2012
- Port lights with valance and sliding pull back curtains
- Built in drawer storage dresser with burlwood top
- Designer wall paper – new 2012

- Built in end tables with granite top

His and Hers En suite Heads with Center Shower

- Etched privacy glass for shower on port and starboard side – new 2012
- Granite bench in shower with teak shower grate
- 2 sinks with granite countertop (1-port & 1-starboard side)
- 2 Royal Flush Headhunter heads (port & starboard)
- 2 medicine cabinets, mirrors
- 2 port lights with sliding designer pleated treatments
- Marble floor
- Towel racks

Guest Stateroom - Queen

- Queen berth
- Decorative bed cover and pillows –new 2012
- Corner desk with ottoman seat
- 26" Samsung TV -new 2012
- Pleated window treatments on sliding tracks & valance – new 2012
- Port lights
- Designer carpet – new 2012
- End tables with marble top
- Table lamp
- Dresser with drawers with large mirror
- Hanging locker
- Royal Flush Head Hunter head
- Spacious, private head - Shower with handheld fixture, sink with granite top, vinyl teak floor, towel racks designer faucet

Guest Stateroom - Twins & Pullman

- Sleeps 3
- (2) Twin beds plus (1) Twin Pullman
- 22" LG TV
- Designer Carpet
- Designer wall paper and cherry wood walls
- Center table with marble top and mirror
- Bed covers, bed pillows – new 2012
- Royal Flush Head Hunter head
- Private Head - Shower with handheld fixture, sink with granite top, vinyl teak floor, towel racks designer faucet

Guest Stateroom - Queen VIP Forward

Access to the VIP stateroom is forward of the galley stairs leading down using a wood handrail and carpeted stairs, cherry wood walls.

- Queen Island berth
- LED overhead light
- Bedcover, throw pillows – new 2012
- Sliding Shoji screens
- Designer carpet – new 2012
- Backlit built in headboard
- Phone
- 26" Samsung TV
- Closet with safe
- Marble vanity
- Private Head - Royal Flush Head Hunter head, Shower with handheld fixture, sink with granite top, vinyl teak floor, towel racks designer faucet

Laundry Area

- GE Spacemaker stack washer & dryer master foyer closet
- GE Spacemaker stack washer & dryer in crew area

Pilothouse

The pilothouse stairs are on the starboard side aft of galley. The instrument panel is cherry wood with upholstered window panels –new 2012. Aft of the helm station is a bench seat with table and a chart table with storage for ships manuals. Some of the features in this area are:

- (1) Stidd electric helm seat
- Navigation & Camera modulated throughout boat
- Brother fax
- Designer carpet
- Electronics console with leather wall (see list of electronics)
- Overhead LED lights
- Pull down shades
- Upholstered bench seat (reupholstered 2012) with wood pedestal table
- Storage cabinets
- Ships manuals
- Stairs to fly bridge up through Plexi-glass door – glass replaced in 2012

Electronics & Navigation

- (3) ACR searchlights w/ remote
- Led spreader lights aft
- Navigation lights
- Docking lights (transom)
- (3) monitoring rotating monitoring cameras aft
- (1) engine room monitoring camera
- Glenndining wing controls in protective acrylic boxes –new 2012
- (2) Samsung Sync Master 912n LCD Monitors 18”
- Simrad RFC 35R exchange high performance flux gate
- Simrad AP20 w/ RPU 80 Autopilot 2nd station full function
- Furuno Radar FR 21115 black box 23kw, 6.5ft antenna
- Furuno NX300 Navtex computer system
- Furuno 1943 C Radar/ Plotter
- Furuno network, GPS antenna
- Northstar 941XD combo mount at lower helm station
- (2) B & G HS 2000 depth finder full function display pack
- Elbex 4 color PTX system
- Nobeltec Admiral 10 charts
- Brother color fax machine and printer interfaced to SATCOM
- Lilly stainless ratchet mount adjustable antenna mounting hardware (4)
- (4) Lilly basic SS GPS mounts
- Concord hailer horn 40 watt with listen back
- SATCOM & cellular and internet system
- Sat Phone: Seatel 2100R
- Panasonic 624 KSU phone system
- ICOM M710 RT 22 SSB radio, 16 ft. antenna
- ICOM at coupler auto tune for SSB radio
- VHF radio Standard spectrum at upper and lower helm stations, digital 8 ft. VHF antenna

Engine Room & Mechanical Equipment

This is a large volume engine room with easy access to all equipment. Access is from the cockpit through a water tight door.

- (2) Caterpillar 3412, 1400 hp hours: port 3287 / stbd 3276
- (1) Onan Generator 27kw in sound shield 3388 hrs
- (1) Onan Generators 35kw in sound shield 3158 hrs
- Makita air compressor – new 2012
- Raw water A/C pump – new 2013
- 24V LED engine room lights – new 2013
- Formica bulkhead covering – new 2012

- Dolphin charger – new 2012
- Engine room batteries
- Dripless shaft seals – new 2013
- Engine alarm
- Engine shut off valve
- Hydraulic steering
- Reverse GP706 oil change pump system, engines
- (2) fuel transfer pumps
- (2) Glendinning 100 amp cable master w/ 100ft cord
- Jabsco emergency crash clutch pump
- Delta T engine room filters and fans
- Royal Flush Head Hunter heads
- Headhunter waste treatment system: Tidal wave type II MSD
- Holding tank
- Air horn
- Cruise Air chilled Air-conditioning system 4 chillers
- NAIAD Hydraulic bow thruster (4 stations)
- Freshwater cooling system
- NAIAD Stabilizers Multisea 2000 model 302 stabilizers w/ 9.0 s.f. fins w/ controller 30x44 fins
- Engine synchronizer
- ZF transmissions
- Water maker Sea Recovery Aqua Whisper SRC1500-2awm
- Emergency engine stop
- Fuel filters
- (6) automatic & manual bilge pumps
- Double insulation in engine room
- (2) Torrid Marine hot water heaters – new 2012 (30gal & 40 gal)
- (2) Maxwell anchors w/ 300' chain
- (2) Maxwell VWC 3000 electric windlasses
- Quick Lift 2000lb electric davit with rotation
- Rolla 5 bladed propellers 39x40

Electrical Equipment

- 110V/220V AC electrical system
- 12v/24v DC electrical system
- 35 kw Onan generator
- 27kw Onan generator
- (2) 100 amp aft shore power receptacles on automatic reels
- Trace inverter charger

Safety, Fire & Emergency Equipment

- SWITLIK (2) 6-man life rafts on hardtop – new hydrostic release 2012
- EPIRB
- FM-200 Sea-Fire fire extinguishing system – hydro tested 2012

Hull & Deck

- (6) underwater lights aft
- (3) underwater cameras
- Portable Passarelle
- Boarding stairs
- LED lights on name boards
- Bosun's locker to port size (full size walk in)
- LED overhead and walkway lights
- Boarding locations: from port and starboard side door, port and starboard aft deck doors,
- Fenders & Lines
- Fresh & saltwater wash down system
- Swim ladder
- Fenders and lines
- Quicklift Davit 2000lb with rotation on flybridge
- Removable chocks on Flybridge
- Marquipt boarding stairs w/ teak hand rails

PROTECTIVE COVERS

- Caprail covers
- Interior runners
- Flybridge cushion covers
- Flybridge helm seat cover
- Bow seating covers
- Aft deck cushion covers
- Sunpad cover for sunning pad

Aft Deck

The aft deck has comfortable built-in seating with upholstered cushions. The teak decks were redone in 2012 as was the teak table top. To the starboard are fiberglass molded teak stairs leading up to flybridge. The aft deck gives you access to the port and starboard side walk-around decks to the bow, the salon, the flybridge, the cockpit, the engine room, the crew area. Other features include:

- 32" Samsung TV

- Wood aft deck teak table (redone 2012) with SS base in/out hi-low
- Teak decks – replaced 2012
- Storage lockers
- Built in seating with storage
- Refrigerator in built in cabinet
- Storage cabinet
- Automatic glass sliding door to salon
- Fiberglass and teak built in stairs to flybridge
- Building in teak stairs port and starboard side leading down to cockpit
- (4) overhead speakers

Cockpit & Swim Platform

The cockpit and swim platform teak decks are new in 2012. This is a generous space that lends itself to another gathering area while doing water sports. It can be easily accessed from the port or starboard stairs from the aft deck.

- Teak caprails with covers
- Hatch storage
- Cockpit and swim platform teak decks – new 2012
- Hot and cold water shower
- Watertight engine room door
- Large teak swim platform -teak new 2012
- Large teak cockpit platform -teak new 2012
- Removable SS deck rails
- Portable Passarelle inserts

Bow

The walk-around decks go all the way around the boat so moving around the boat for guest or dock is made easy. There are high bulwarks all the way around the boat, to the portside is a large bosun's locker. Forward to the bow is a built in seat with upholstered cushions and port and starboard large lockers. A custom sun pad was designed for the bow.

- Teak decking
- Bench seating with cushions and covers
- Raised sunning pad -new 2012
- Storage lockers
- Teak cap rails with covers
- Ships Bell
- Anchor windlass

Fly Bridge

Up the stairs from the pilothouse or aft deck is a large flybridge deck with hardtop over the helm and seating area. Forward are three helm seats with a console that houses the electronics and wing stations. Aft of that are two large built in seating areas to the port and starboard side with cushions, storage and tables. Moving aft again to the port side is a oversized freezer for additional provisioning and to the starboard is a sink, storage and barbecue grill and refrigerator. There are removable chocks and a davit further aft.

- Plexi glass door – glass new 2012 down to flybridge
- Teak stairs down to aft deck
- Helm station with electronics
- Upgraded Glenndining electronic controls
- New Fusion stereo w/ docking station compatible with I-phone and I-pod
- Port and starboard built in seating with storage and cushions
- Port and starboard fiberglass tables
- Non-skid fiberglass floor, stainless steel accents,
- (3) Pompanette helm seats
- BBQ grill
- Oversized freezer
- refrigerator
- Icemaker
- Sink
- LED overhead lights
- Toe kick LED multi-color rope lighting – new 2013
- Teak lounge chairs with sun shades
- Teak stairs
- Removable chocks for jet skis
- Quicklift Davit 2000lb with rotation

Captain & Crew

Captain and Crew cabins are located aft with access from the cockpit engine room door. Captain has a double bed and private head, shower and sink, and hanging locker. The cabin also has a TV, window treatments and bedcovers. (2) Crew cabins each have a twin bunks, TV, bedcovers, carpet floor, hanging locker and a shared head, shower and sink. Hardwood flooring in crew areas.

Exclusions

The following items are NOT included in the sale of the vessel:

- Center Console Tender

- Seadoo jet skis
- Folding bikes
- (2) canvas inflatable kayaks
- Fishing gear
- Personal items

A full list will be presented upon request.

Исключения

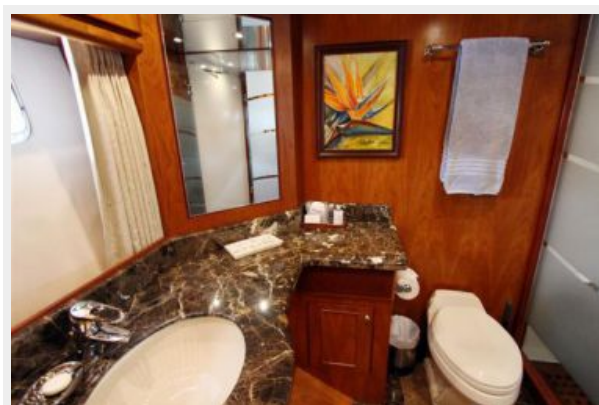
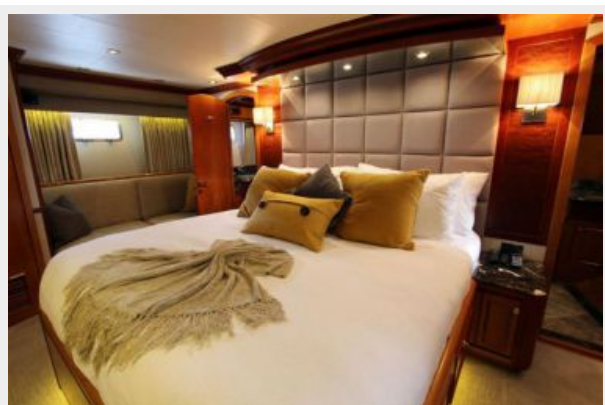
При продаже яхты исключаются личные вещи владельца.

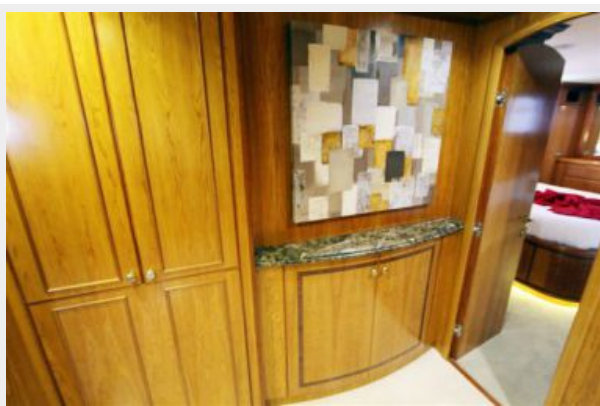
Отказ от ответственности

Компания предоставляет описание судна или яхты добросовестно, но не может гарантировать точность этой информации, а также не ручается за техническое состояние. Покупатель должен проинструктировать своих агентов или оценщиков исследовать представленную информацию более подробно, по собственному желанию. Продажа судна или яхты, изменение цены или снятие с продажи будет происходить без предварительного уведомления.

ФОТОГРАФИИ

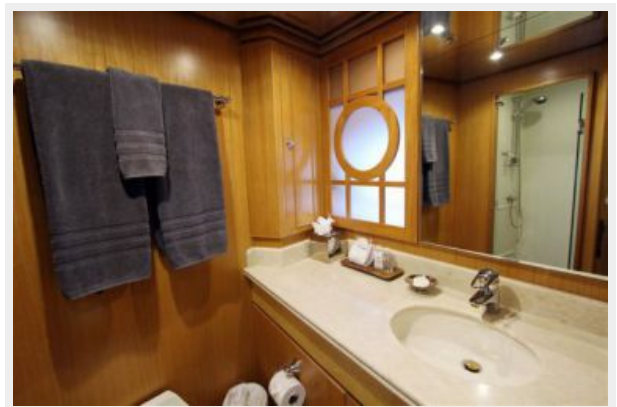






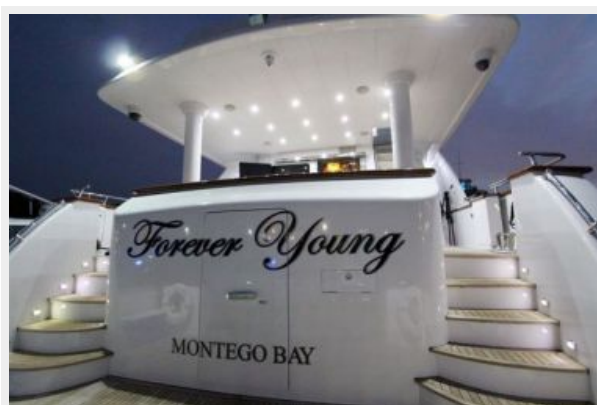






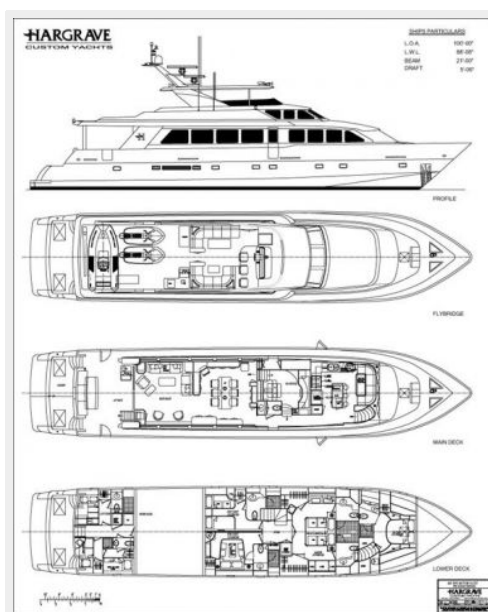
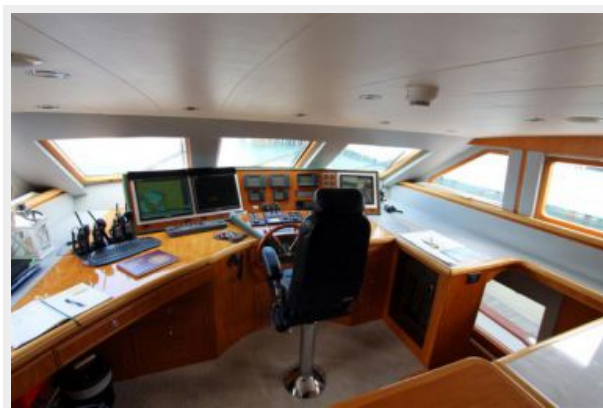












КОНТАКТЫ

Андрей Шестаков (Andrey Shestakov) – ведущий яхтенный брокер отдела продаж яхт и судов компании Shestakov Yacht Sales Inc. Официальный представитель Shestakov Yacht Sales Inc. для русскоговорящих клиентов в центральном офисе компании в Майами/Форт Лодердейл/Флорида/США.

Контактная информация

Email: andrey@shestakovyachtsales.com

Web: shestakovyachtsales.com

Телефоны

Краснодарский край: **+7(918)465-66-44**

США, Майами, Флорида: **+1(954)274-4435**

Время работы

Понедельник – Суббота: **9:00 - 21:00**
EDT

Воскресенье: **Закрито**

Адрес



Harbour Towne Marina, 850 NE 3rd St,
STE 213, Dania, FL 33004