

ALACRITY — LAZZARA



Builder: LAZZARA

Year Built: 2005

Model: Motor Yacht

Price: PRICE ON APPLICATION

Location: United States

LOA: 68' 0" (20.73m)

Beam: 18' 2" (5.54m)

Max Draft: 4' 2" (1.27m)

Cruise Speed: 24 Kts. (28 MPH)

Max Speed: 48 Kts. (55 MPH)

Our experienced yacht broker, Andrey Shestakov, will help you choose and buy a yacht that best suits your needs **Alacrity — LAZZARA** from our catalogue. Presently, at Shestakov Yacht Sales Inc., we have a wide variety of yachts available on our sale's list. We also work in close contact with all the big yacht manufacturers from all over the world.

If you would like to buy a yacht **Alacrity — LAZZARA** or would like help answering any questions concerning purchasing, selling or chartering a yacht, please call **+1(954)274-4435**

TABLE OF CONTENTS

TABLE OF CONTENTS	2
SPECIFICATIONS	3
Overview	3
Basic Information	5
Dimensions	5
Speed, Capacities and Weight	5
Accommodations	6
Hull and Deck Information	6
Engine Information	6
DETAILED INFORMATION	7
Overview	7
Electronics & Equipment	9
Exclusions	9
Disclaimer	9
PHOTOS	10
CONTACTS	29
Contact details	29
Telephones	29
Office hours	29
Address	29

SPECIFICATIONS

Overview

The 68 Lazzara is a very unique yacht. It offers features usually only found in much larger yachts. There is not a boat in this size range that offers the features this one does. Here is a short list of what makes this yacht special and very different from anything else in this size range.

1) The flush deck design creates a single level access from the aft cockpit, through to the galley and pilothouse, then continues on to the side-decks and bow seating via the pilothouse door. This makes socializing aboard more convenient and much safer. The same is true for fender and line handling.

2) The forward guest cabin/crew cabin is located inside the vessel in the bow and separate from the three massive owner cabins that are located midship. This creates privacy, yet provides a fully functional crew cabin that can also be used as a guest cabin. The forward cabin also has a very functional head compartment. Having the crew quarters forward also creates room for the dinghy garage aft. Stowing the dinghy in the garage creates a much cleaner look vs one sitting on a swim platform or taking up space on the bridge.

3) On deck day-head! This is one of the nicest features you can have on a cruising/entertaining vessel. The on deck head is right behind the pilothouse, so no need to run up and down stairs to use the head while underway or entertaining.

4) There is nothing better than relaxing in your hot tub under the stars with a glass of champagne after a hard day of playing.

5) Massive engine room that you can stand up in, plus gain 360 degree access to both engines.

6) The Wireless Yacht Controller makes this vessel a breeze to dock. It provides remote control of the engines, bow and stern thrusters. You can control the vessel from anywhere on the vessel and look like a pro when you dock.

Alacrity was in great condition when this owner purchased her in 2012 and she has been consistently improved ever since. There have been many upgrades as outlined below. She has a very unique layout, boasting 4 staterooms with private heads, a single level main deck with a day head on deck level. The bridge is great for entertaining many guest and includes a hot tub for unwinding at the end of a long day playing on the water. Alacrity is a must see if you are looking for a well thought out yacht for cruising and playing.

Key features:

“Alacrity”

2005 Lazzara 68 Motoryacht

(2) Caterpillar C18 ACERT Engines, 1,000 HP each, +/- 1900 hours

Recent Upgrades and Enhancements:

Complete electronics refit in 2013, including the following:

- *All new Garmin 8000 Series Touchscreens*
- *Fully networked, including integration with satellite TV*
- *New stern camera, digital sounder, and satellite weather module.*
- *New Digital Garmin HD, 12KW, open array radar.*
- *Ipad integration to wirelessly transfer routes*

New flooring throughout the boat, 2013.

Brand new Williams Jet Tender, 2013.

A portion of the boat is waxed every week.

New TV's in the Salon and Master, 2014.

New satellite dome and Direct TV, 2014.

New polycarbonate flybridge enclosure, with black trim, 2013.

All new canvas and cushions, 2012

Backup DC fresh water pump, installed 2013

Yacht Controller wireless control for engines and thruster 2014

Windlass remote control 2013

AIS Transponder and Receiver 2012

Upgraded 110 lb anchor.

Original Highlights:

TRAC stabilizers

Bow and stern thrusters

Flybridge hot tub

4 Staterooms, each with its own head/shower.

Day head on main deck

6 HVAC zones, including one in each stateroom

Full size washer and dryer in stateroom hallway.

Water maker

Engine room camera

Full size stainless steel galley appliances, and wine cooler.

US Registered/documented

Basic Information

Category: Motor Yacht

Sub Category: Pilothouse

Model Year: 2005

Year Built: 2005

Country: United States

Fly Bridge: Yes

Cockpit: Yes

Dimensions

LOA: 68' 0" (20.73m)

Beam: 18' 2" (5.54m)

Max Draft: 4' 2" (1.27m)

Clearance: 22' 8" (6.91m)

Speed, Capacities and Weight

Cruise Speed: 24 Kts. (28 MPH)

Max Speed: 48 Kts. (55 MPH)

Displacement: 104000 Pounds

Water Capacity: 300 Gallons

Holding Tank: 100 Gallons

Fuel Capacity: 1300 Gallons

Accommodations

Total Cabins: 4

Total Berths: 8

Total Heads: 5

Hull and Deck Information

Hull Material: Fiberglass

Engine Information

Engines: 2

Manufacturer: Caterpillar

Model: C-18 Acert

Engine Type: Inboard

Fuel Type: Diesel

DETAILED INFORMATION

Overview

The 68 Lazzara is a very unique yacht. It offers features usually only found in much larger yachts. There is not a boat in this size range that offers the features this one does. Here is a short list of what makes this yacht special and very different from anything else in this size range.

1) The flush deck design creates a single level access from the aft cockpit, through to the galley and pilothouse, then continues on to the side-decks and bow seating via the pilothouse door. This makes socializing aboard more convenient and much safer. The same is true for fender and line handling.

2) The forward guest cabin/crew cabin is located inside the vessel in the bow and separate from the three massive owner cabins that are located midship. This creates privacy, yet provides a fully functional crew cabin that can also be used as a guest cabin. The forward cabin also has a very functional head compartment. Having the crew quarters forward also creates room for the dinghy garage aft. Stowing the dinghy in the garage creates a much cleaner look vs one sitting on a swim platform or taking up space on the bridge.

3) On deck day-head! This is one of the nicest features you can have on a cruising/entertaining vessel. The on deck head is right behind the pilothouse, so no need to run up and down stairs to use the head while underway or entertaining.

4) There is nothing better than relaxing in your hot tub under the stars with a glass of champagne after a hard day of playing.

5) Massive engine room that you can stand up in, plus gain 360 degree access to both engines.

6) The Wireless Yacht Controller makes this vessel a breeze to dock. It provides remote control of the engines, bow and stern thrusters. You can control the vessel from anywhere on the vessel and look like a pro when you dock.

Alacrity was in great condition when this owner purchased her in 2012 and she has been consistently improved ever since. There have been many upgrades as outlined below. She has a very unique layout, boasting 4 staterooms with private heads, a single level main deck with a day head on deck level. The bridge is great for entertaining many guest and includes a hot tub for unwinding at the end of a long day playing on the water. Alacrity is a must see if you are looking for a well thought out yacht for cruising and playing.

Key features:

“Alacrity”

2005 Lazzara 68 Motoryacht

(2) Caterpillar C18 ACERT Engines, 1,000 HP each, +/- 1900 hours

Recent Upgrades and Enhancements:

Complete electronics refit in 2013, including the following:

- *All new Garmin 8000 Series Touchscreens*
- *Fully networked, including integration with satellite TV*
- *New stern camera, digital sounder, and satellite weather module.*
- *New Digital Garmin HD, 12KW, open array radar.*
- *Ipad integration to wirelessly transfer routes*

New flooring throughout the boat, 2013.

Brand new Williams Jet Tender, 2013.

A portion of the boat is waxed every week.

New TV's in the Salon and Master, 2014.

New satellite dome and Direct TV, 2014.

New polycarbonate flybridge enclosure, with black trim, 2013.

All new canvas and cushions, 2012

Backup DC fresh water pump, installed 2013

Yacht Controller wireless control for engines and thruster 2014

Windlass remote control 2013

AIS Transponder and Receiver 2012

Upgraded 110 lb anchor.

Original Highlights:

TRAC stabilizers

Bow and stern thrusters

Flybridge hot tub

4 Staterooms, each with its own head/shower.

Day head on main deck

6 HVAC zones, including one in each stateroom

Full size washer and dryer in stateroom hallway.

Water maker

Engine room camera

Full size stainless steel galley appliances, and wine cooler.

US Registered/documented

Electronics & Equipment

Electronics: CD player Navigation center Radio TV set Radar Depthsounder GPS VHF Cockpit speakers Compass Autopilot Plotter - Garmin 8000x3 **Inside Equipment:** Electric head Stern thruster Washing machine Heating Hot water Electric bilge pump Bow thruster Microwave oven Oven Fresh water maker Dishwasher Refrigerator Battery charger Air conditioning **Electrical Equipment:** Generator - Onan 27.5 Shore power inlet Inverter Electrical Circuit: 220V **Outside Equipment/Extras:** Swimming ladder Tender Cockpit shower Teak cockpit Cockpit table Cockpit cushions Electric windlass

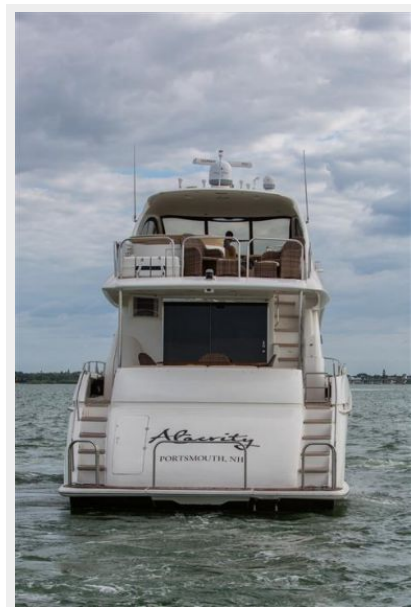
Exclusions

Owner's personal belongings.

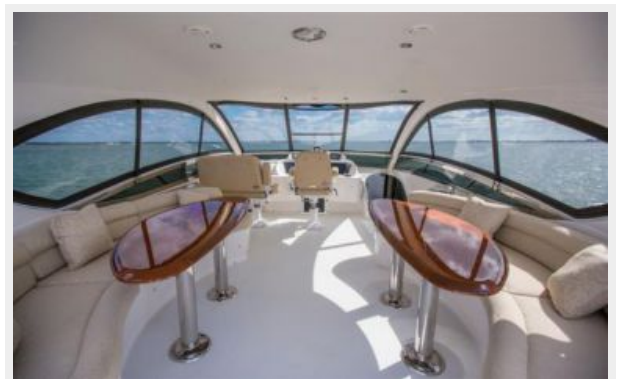
Disclaimer

The Company offers the details of this vessel or yacht in good faith but cannot guarantee or warrant the accuracy of this information nor warrant the condition of the vessel. A buyer should instruct his representatives, agents, or his surveyors, to investigate such details as the buyer desires validated. This vessel or yacht is offered subject to prior sale, price change, or withdrawal without notice.

PHOTOS











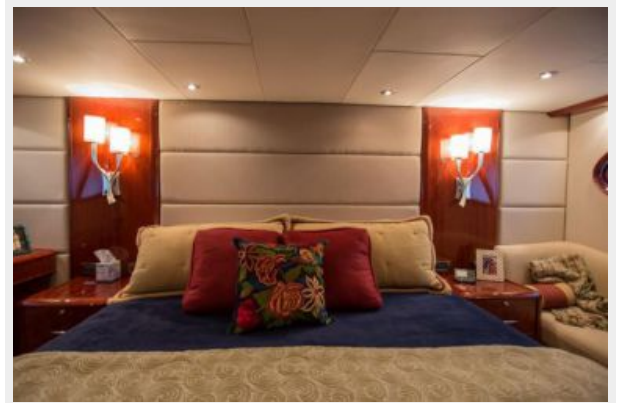


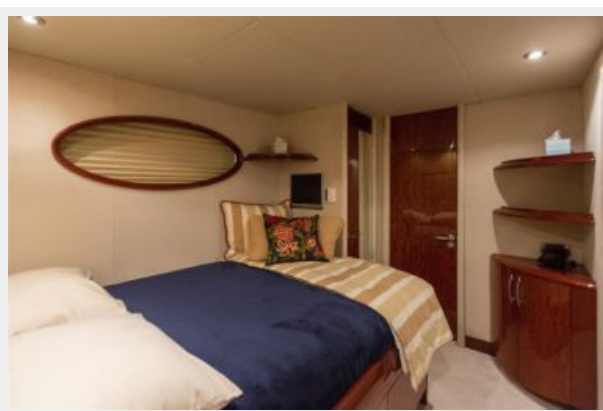
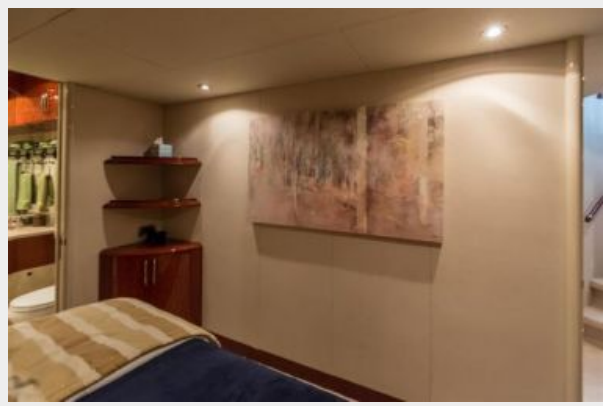
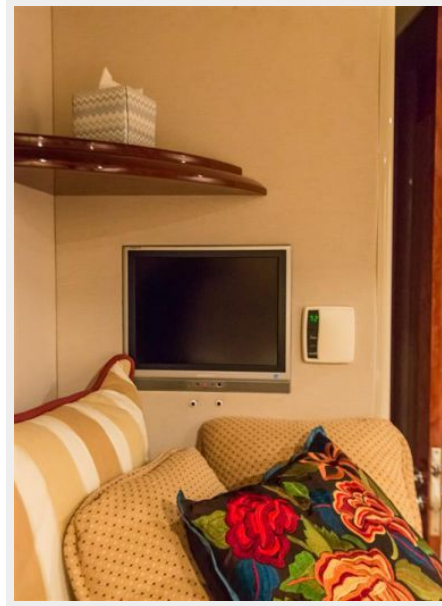


























CONTACTS

Andrey Shestakov, leading yacht broker of the sales department of Shestakov Yacht Sales Inc. Shestakov Yacht Sales Inc., the official representative of the Miami/Fort Lauderdale FL headquarters.

Contact details

Email: andrey@shestakovyachtsales.com

Web: shestakovyachtsales.com/en/

Telephones

USA: +1(954)274-4435

Office hours

Monday – Saturday: **9:00 - 21:00** EDT

Sunday: **closed**

Address



Harbour Towne Marina, 850 NE 3rd St,
STE 213, Dania, FL 33004