

## ALACRITY — LAZZARA



**Судостроитель:** LAZZARA

**Год постройки:** 2005

**Модель:** Моторная яхта

**Цена:** **ЦЕНА ЯХТЫ ПО ЗАПРОСУ**

**Местонахождение:** United States

**Длина общая:** 68' 0" (20.73m)

**Ширина:** 18' 2" (5.54m)

**Макс. осадка:** 4' 2" (1.27m)

**Крейс. скорость:** 24 Kts. (28 MPH)

**Макс. скорость:** 48 Kts. (55 MPH)

Купить **Alacrity — LAZZARA** а также выбрать подходящую вам яхту из нашего каталога яхт вам поможет опытный яхтенный брокер Андрей Шестаков. На сегодняшний день компания **Shestakov Yacht Sales Inc.** имеет большое количество яхт в собственном списке продаж, а также тесно сотрудничает со всеми крупными яхтенными производителями по всему миру.

Для того чтобы купить яхту **Alacrity — LAZZARA** а также проконсультироваться по любому вопросу связанному с покупкой, продажей, чартером яхт позвоните по телефону **+7(918)465-66-44**.

# ОГЛАВЛЕНИЕ

ОГЛАВЛЕНИЕ	2
ХАРАКТЕРИСТИКИ	3
Обзор	3
Основная информация	5
Размеры	5
Скорость, вместимость и масса	5
Размещение	6
Корпус и палуба	6
Информация о двигателе	6
ПОДРОБНОЕ ОПИСАНИЕ	7
Overview	7
Electronics & Equipment	9
Исключения	9
Отказ от ответственности	9
ФОТОГРАФИИ	10
КОНТАКТЫ	29
Контактная информация	29
Телефоны	29
Время работы	29
Адрес	29

---

# ХАРАКТЕРИСТИКИ

---

## Обзор

---

*The 68 Lazzara is a very unique yacht. It offers features usually only found in much larger yachts. There is not a boat in this size range that offers the features this one does. Here is a short list of what makes this yacht special and very different from anything else in this size range.*

*1) The flush deck design creates a single level access from the aft cockpit, through to the galley and pilothouse, then continues on to the side-decks and bow seating via the pilothouse door. This makes socializing aboard more convenient and much safer. The same is true for fender and line handling.*

*2) The forward guest cabin/crew cabin is located inside the vessel in the bow and separate from the three massive owner cabins that are located midship. This creates privacy, yet provides a fully functional crew cabin that can also be used as a guest cabin. The forward cabin also has a very functional head compartment. Having the crew quarters forward also creates room for the dinghy garage aft. Stowing the dinghy in the garage creates a much cleaner look vs one sitting on a swim platform or taking up space on the bridge.*

*3) On deck day-head! This is one of the nicest features you can have on a cruising/entertaining vessel. The on deck head is right behind the pilothouse, so no need to run up and down stairs to use the head while underway or entertaining.*

*4) There is nothing better than relaxing in your hot tub under the stars with a glass of champagne after a hard day of playing.*

*5) Massive engine room that you can stand up in, plus gain 360 degree access to both engines.*

*6) The Wireless Yacht Controller makes this vessel a breeze to dock. It provides remote control of the engines, bow and stern thrusters. You can control the vessel from anywhere on the vessel and look like a pro when you dock.*

*Alacrity was in great condition when this owner purchased her in 2012 and she has been consistently improved ever since. There have been many upgrades as outlined below. She has a very unique layout, boasting 4 staterooms with private heads, a single level main deck with a day head on deck level. The bridge is great for entertaining many guest and includes a hot tub for unwinding at the end of a long day playing on the water. Alacrity is a must see if you are looking for a well thought out yacht for cruising and playing.*

### **Key features:**

*“Alacrity”*

---

## *2005 Lazzara 68 Motoryacht*

*(2) Caterpillar C18 ACERT Engines, 1,000 HP each, +/- 1900 hours*

### ***Recent Upgrades and Enhancements:***

*Complete electronics refit in 2013, including the following:*

- *All new Garmin 8000 Series Touchscreens*
- *Fully networked, including integration with satellite TV*
- *New stern camera, digital sounder, and satellite weather module.*
- *New Digital Garmin HD, 12KW, open array radar.*
- *Ipad integration to wirelessly transfer routes*

*New flooring throughout the boat, 2013.*

*Brand new Williams Jet Tender, 2013.*

*A portion of the boat is waxed every week.*

*New TV's in the Salon and Master, 2014.*

*New satellite dome and Direct TV, 2014.*

*New polycarbonate flybridge enclosure, with black trim, 2013.*

*All new canvas and cushions, 2012*

*Backup DC fresh water pump, installed 2013*

### ***Yacht Controller wireless control for engines and thruster 2014***

*Windlass remote control 2013*

*AIS Transponder and Receiver 2012*

*Upgraded 110 lb anchor.*

### ***Original Highlights:***

*TRAC stabilizers*

*Bow and stern thrusters*

*Flybridge hot tub*

*4 Staterooms, each with its own head/shower.*

*Day head on main deck*

*6 HVAC zones, including one in each stateroom*

*Full size washer and dryer in stateroom hallway.*

*Water maker*

*Engine room camera*

*Full size stainless steel galley appliances, and wine cooler.*

*US Registered/documented*

## Основная информация

---

**Тип судна:** Моторная яхта

**Подкатегория:** Pilothouse

**Модельный год:** 2005

**Год постройки:** 2005

**Страна:** United States

**Открытая палуба мостика:** Да

**Кубрик:** Да

## Размеры

---

**Длина общая:** 68' 0" (20.73m)

**Ширина:** 18' 2" (5.54m)

**Макс. осадка:** 4' 2" (1.27m)

**Трапы:** 22' 8" (6.91m)

## Скорость, вместимость и масса

---

**Крейс. скорость:** 24 Kts. (28 MPH)

**Макс. скорость:** 48 Kts. (55 MPH)

**Водоизмещение:** 104000 Pounds

**Вместимость воды:** 300 Gallons

**Вместимость сточного бака:** 100 Gallons **Объем топливного бака:** 1300 Gallons

## Размещение

---

**Всего кают:** 4

**Всего коек:** 8

**Всего ком. состава:** 5

## Корпус и палуба

---

**Материал корпуса:** Fiberglass

## Информация о двигателе

---

**Двигатели:** 2

**Производитель:** Caterpillar

**Модель:** C-18 Acert

**Тип двигателя:** Inboard

**Тип топлива:** Diesel

# ПОДРОБНОЕ ОПИСАНИЕ

## Overview

*The 68 Lazzara is a very unique yacht. It offers features usually only found in much larger yachts. There is not a boat in this size range that offers the features this one does. Here is a short list of what makes this yacht special and very different from anything else in this size range.*

*1) The flush deck design creates a single level access from the aft cockpit, through to the galley and pilothouse, then continues on to the side-decks and bow seating via the pilothouse door. This makes socializing aboard more convenient and much safer. The same is true for fender and line handling.*

*2) The forward guest cabin/crew cabin is located inside the vessel in the bow and separate from the three massive owner cabins that are located midship. This creates privacy, yet provides a fully functional crew cabin that can also be used as a guest cabin. The forward cabin also has a very functional head compartment. Having the crew quarters forward also creates room for the dinghy garage aft. Stowing the dinghy in the garage creates a much cleaner look vs one sitting on a swim platform or taking up space on the bridge.*

*3) On deck day-head! This is one of the nicest features you can have on a cruising/entertaining vessel. The on deck head is right behind the pilothouse, so no need to run up and down stairs to use the head while underway or entertaining.*

*4) There is nothing better than relaxing in your hot tub under the stars with a glass of champagne after a hard day of playing.*

*5) Massive engine room that you can stand up in, plus gain 360 degree access to both engines.*

*6) The Wireless Yacht Controller makes this vessel a breeze to dock. It provides remote control of the engines, bow and stern thrusters. You can control the vessel from anywhere on the vessel and look like a pro when you dock.*

*Alacrity was in great condition when this owner purchased her in 2012 and she has been consistently improved ever since. There have been many upgrades as outlined below. She has a very unique layout, boasting 4 staterooms with private heads, a single level main deck with a day head on deck level. The bridge is great for entertaining many guest and includes a hot tub for unwinding at the end of a long day playing on the water. Alacrity is a must see if you are looking for a well thought out yacht for cruising and playing.*

### Key features:

*“Alacrity”*

## *2005 Lazzara 68 Motoryacht*

*(2) Caterpillar C18 ACERT Engines, 1,000 HP each, +/- 1900 hours*

### ***Recent Upgrades and Enhancements:***

*Complete electronics refit in 2013, including the following:*

- *All new Garmin 8000 Series Touchscreens*
- *Fully networked, including integration with satellite TV*
- *New stern camera, digital sounder, and satellite weather module.*
- *New Digital Garmin HD, 12KW, open array radar.*
- *Ipad integration to wirelessly transfer routes*

*New flooring throughout the boat, 2013.*

*Brand new Williams Jet Tender, 2013.*

*A portion of the boat is waxed every week.*

*New TV's in the Salon and Master, 2014.*

*New satellite dome and Direct TV, 2014.*

*New polycarbonate flybridge enclosure, with black trim, 2013.*

*All new canvas and cushions, 2012*

*Backup DC fresh water pump, installed 2013*

### ***Yacht Controller wireless control for engines and thruster 2014***

*Windlass remote control 2013*

*AIS Transponder and Receiver 2012*

*Upgraded 110 lb anchor.*

### ***Original Highlights:***

*TRAC stabilizers*

*Bow and stern thrusters*

*Flybridge hot tub*

*4 Staterooms, each with its own head/shower.*



*Day head on main deck*

*6 HVAC zones, including one in each stateroom*

*Full size washer and dryer in stateroom hallway.*

*Water maker*

*Engine room camera*

*Full size stainless steel galley appliances, and wine cooler.*

*US Registered/documentated*

---

## Electronics & Equipment

---

**Electronics:** CD player Navigation center Radio TV set Radar Depthsounder GPS VHF Cockpit speakers Compass Autopilot Plotter - Garmin 8000x3 **Inside Equipment:** Electric head Stern thruster Washing machine Heating Hot water Electric bilge pump Bow thruster Microwave oven Oven Fresh water maker Dishwasher Refrigerator Battery charger Air conditioning **Electrical Equipment:** Generator - Onan 27.5 Shore power inlet Inverter Electrical Circuit: 220V **Outside Equipment/Extras:** Swimming ladder Tender Cockpit shower Teak cockpit Cockpit table Cockpit cushions Electric windlass

---

## Исключения

---

При продаже яхты исключаются личные вещи владельца.

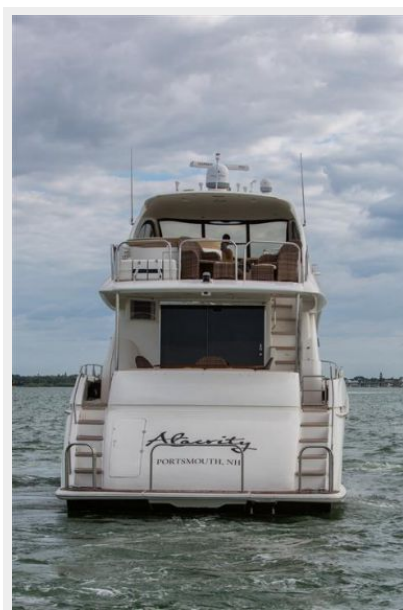
---

## Отказ от ответственности

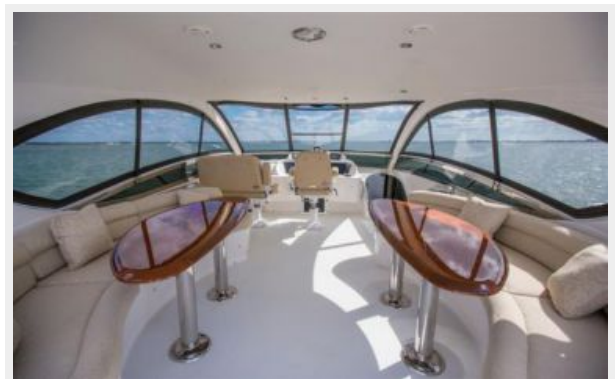
---

Компания предоставляет описание судна или яхты добросовестно, но не может гарантировать точность этой информации, а также не ручается за техническое состояние. Покупатель должен проинструктировать своих агентов или оценщиков исследовать представленную информацию более подробно, по собственному желанию. Продажа судна или яхты, изменение цены или снятие с продажи будет происходить без предварительного уведомления.

# ФОТОГРАФИИ













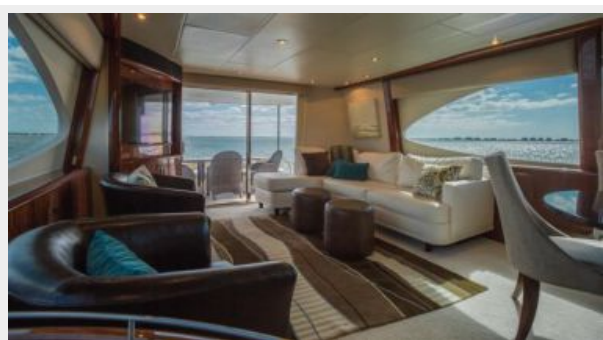










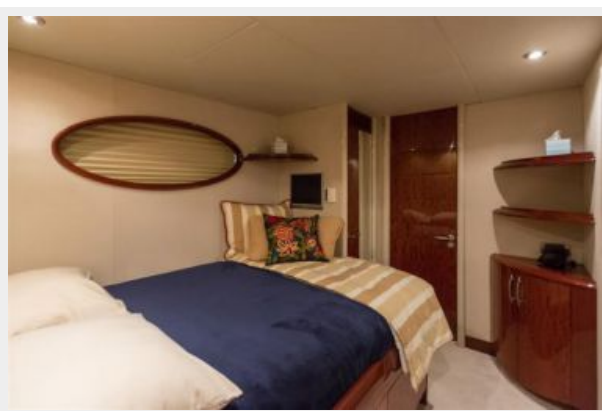
































# КОНТАКТЫ

---

Андрей Шестаков (Andrey Shestakov) – ведущий яхтенный брокер отдела продаж яхт и судов компании Shestakov Yacht Sales Inc. Официальный представитель Shestakov Yacht Sales Inc. для русскоговорящих клиентов в центральном офисе компании в Майами/Форт Лодердейл/Флорида/США.

## Контактная информация

---

Email: [andrey@shestakovyachtsales.com](mailto:andrey@shestakovyachtsales.com)

Web: [shestakovyachtsales.com](http://shestakovyachtsales.com)

## Телефоны

---

Краснодарский край: **+7(918)465-66-44**

США, Майами, Флорида: **+1(954)274-4435**

## Время работы

---

Понедельник – Суббота: **9:00 - 21:00**  
EDT

Воскресенье: **Закрито**

## Адрес

---



Harbour Towne Marina, 850 NE 3rd St,  
STE 213, Dania, FL 33004