

DEBT SETTER — PRINCESS YACHTS



Судостроитель: PRINCESS YACHTS

Год постройки: 2013

Модель: Моторная яхта

Цена: ЦЕНА ЯХТЫ ПО ЗАПРОСУ

Местонахождение: United States

Длина общая: 52' 0" (15.85m)

Ширина: 15' 7" (4.75m)

Макс. осадка: 4' 1" (1.24m)

Крейс. скорость: 26 Kts. (30 MPH)

Макс. скорость: 33 Kts. (38 MPH)

Купить **DEBT SETTER — PRINCESS YACHTS** а также выбрать подходящую вам яхту из нашего каталога яхт вам поможет опытный яхтенный брокер Андрей Шестаков. На сегодняшний день компания **Shestakov Yacht Sales Inc.** имеет большое количество яхт в собственном списке продаж, а также тесно сотрудничает со всеми крупными яхтенными производителями по всему миру.

Для того чтобы купить яхту **DEBT SETTER — PRINCESS YACHTS** а также проконсультироваться по любому вопросу связанному с покупкой, продажей, чартером яхт позвоните по телефону **+7(918)465-66-44**.

ОГЛАВЛЕНИЕ

ОГЛАВЛЕНИЕ	2
ХАРАКТЕРИСТИКИ	5
Обзор	5
Основная информация	5
Размеры	5
Скорость, вместимость и масса	5
Размещение	6
Корпус и палуба	6
Информация о двигателе	6
ПОДРОБНОЕ ОПИСАНИЕ	7
Vessel Walkthrough	7
Interior Features	7
Features	8
Salon	8
Galley	9
Foyer / Companionway	9
Master Stateroom	10
Master Head	10
VIP Stateroom	10
Twin Stateroom	11
Guest Head	11
Crew Quarters	11
Lower Helm	12
Fly Bridge	13
Fly Bridge Electronics	13
Aft Deck	14
Deck Equipment	14
Engine Room	14

Machinery	15
Исключения	15
Отказ от ответственности	15
ФОТОГРАФИИ	16
Bow Profile	16
Arial	16
Bow	16
Galley	16
Galley	17
Galley	17
Salon	17
Salon	17
Salon	17
Salon	17
Lower Helm	18
Lower Helm	18
Master Stateroom	18
Master Stateroom	18
Master Stateroom	19
Master Stateroom	19
Master Head	19
Master Head	19
VIP Stateroom	20
VIP Stateroom	20
Twin Stateroom	20
Twin Stateroom	20
Guest Head	21
Washer & Dryer	21
Aft Deck	21

Aft Deck	21
Passageway - Port Side	22
Passageway - Starboard Side	22
Fly Bridge - Helm	22
Fly Bridge - Helm at Night	22
Fly Bridge - Helm	23
Fly Bridge - Helm at Night	23
Fly Bridge	23
Fly Bridge - Dining at Night	23
Fly Bridge - Grill & Sink	23
Fly Bridge - Dining	23
Crew Quarters	24
Crew Quarters	24
Engine Room	24
Engine Room	24
Engine Room	25
Engine Room	25
Engine Room	25
Starboard Stern	25
КОНТАКТЫ	26
Контактная информация	26
Телефоны	26
Время работы	26
Адрес	26

ХАРАКТЕРИСТИКИ

Обзор

DEBT SETTER has been maintained by a full-time captain and, along with custom upgrades, is a must-see. Upgrades include a hard top, oversized trim tabs, Pioneer Linen custom interior, sun pads with adjustable backrest, UMT 6-step boarding ladder, V-Cool tint throughout the salon, additional air conditioning boost, and a transferable Princess manufacturer's warranty in effect through December 16, 2015.

Основная информация

Тип судна: Моторная яхта

Подкатегория: Flybridge

Модельный год: 2014

Год постройки: 2013

Страна: United States

Верх: Hardtop

Открытая палуба мостика: Да

Размеры

Длина общая: 52' 0" (15.85m)

Ширина: 15' 7" (4.75m)

Макс. осадка: 4' 1" (1.24m)

Скорость, вместимость и масса

Крейс. скорость: 26 Kts. (30 MPH)

Макс. скорость: 33 Kts. (38 MPH)

Чистый вес: 52200 Pounds

Вместимость воды: 156 Gallons

Вместимость сточного бака: 48 Gallons

Объем топливного бака: 624 Gallons

Размещение

Всего кают: 3

Всего коек: 4

Спальные места: 6

Всего ком. состава: 2

Каюты экипажа: 1

Койки экипажа: 1

Спальных мест экипажа: 1

Комм. состав экипажа: 1

Корпус и палуба

Материал корпуса: Fiberglass

Информация о двигателе

Двигатели: 2

Производитель: MAN

Модель: R6

Тип топлива: Diesel

ПОДРОБНОЕ ОПИСАНИЕ

Vessel Walkthrough

DEBT SETTER features a three-stateroom, two-head layout. Upon entering the vessel through the sliding glass and stainless steel door, there is a large galley to starboard. Features include a Waco 3-drawer refrigerator/freezer, Sharp convection/microwave oven, Vitrifrigo icemaker, garbage disposal, and Trident three-burner cooktop, ample storage with built-in china and glassware cabinets. Opposite to port is a sideboard cabinet with an undercounter freezer and bottle storage. Wenge flooring complements this area. The salon is two steps up with a custom white leather sofa to port and a high-gloss teak dining table with motorized height-adjusting base. Opposite to starboard is a white leather loveseat and 40" LED HDTV on a lift.

DEBT SETTER has an upgraded Dometic Cruisair 36,000 BTU air conditioner. Forward to starboard is the lower helm with a Garmin 8212 multi-function GPS display, Garmin autopilot, Garmin GMI 10 data repeater, Side Power bow and stern thruster controls, MAN MMDS engine displays and two cocoa brown leather helm chairs. Power sliding windows are located port and starboard.

Moving forward to the staterooms is the full-beam, mid-ship master with a queen bed. The port side master head contains a large enclosed shower, vanity and VacuFlush freshwater head. Forward on the starboard side is a guest stateroom with twin beds that electronically convert to a full-bed. Opposite to port is access to the guest/VIP head which features an enclosed shower, vanity, and VaccuFlush freshwater head. The VIP stateroom is situated forward and contains a centerline bed with private access to the guest/VIP head. A Splendide combination washer/dryer is located under the stairs heading to the salon.

Interior Features

- Custom linen package by Pioneer Linens
- Walnut satin wood interior
- LED lighting upgrade
- Galley aft layout ideal for on-deck dining
- Custom sideboard with under-counter freezer and bottle storage opposite galley to port
- Llumar V-Cool custom window tint

- Universal smoke detectors throughout
- Three staterooms and a crew cabin
- HD DirecTV with internet and WiFi
- Central vacuum

Features

- Fully transferable Princess bow to stern Manufacturer's Warranty effective through December 16, 2015
- All records up-to-date
- Variable speed bow and stern thrusters
- Upgraded to Bennett Dual actuator Premiere Line trim tabs
- Closed circuit camera system
- TracVision HD7 satellite with 4 receivers
- Premium Ghost alarm system
- 6-Step custom gangway
- LED illuminated transom lettering
- (4) Lumishore blue underwater lights
- Trend tempered windows

Salon

- Custom white leather sofa to port for 6 to 8 guests
- Custom white leather loveseat for 4 to starboard
- High-gloss teak dining table with motorized height-adjusting table base
- Custom Oceanair blinds
- Custom carpet with carpet runners
- 40" LED HDTV television with DirecTV receiver

- Harman Kardon 2.1 Blueraу system and KEF speakers
- New Dometic Cruisair 36,000 btu A/C compressor
- Cruisair digital air conditioning controls
- Lighting controls
- Closed circuit camera

Galley

- Located starboard aft
- Aztec brown Avonite countertops
- Wenge flooring
- Custom sideboard with under-counter freezer and bottle storage opposite galley to port
- Franke sink with Grohe faucet
- Trident 3-burner stove
- Sharp convection grill microwave R-820JS-F
- Waco 3-drawer refrigerator with freezer
- Vitrifrigo ice maker
- Garbage disposal
- Ample storage
- Handmade Dartington crystal glassware
- Handmade Legle porcelain plateware
- Sliding windows to port and starboard

Foyer / Companionway

- 110/220v A/C power distribution panel
- 24v DC power distribution panel
- Ghost Phantom alarm system by Paradox

- Lighting controls

Master Stateroom

- Queen-sized bed with individual reading lamps
- Spacious layout with 6ft, 4in head-room
- Custom white leather loveseat to port
- Large hull windows with opening port lights covered by wooden blinds
- Large closet and ample bedside storage
- 4-drawer cabinet to starboard
- 28" Panasonic HDTV television with DirecTV receiver
- AMSEC electronic DL5000 safe
- Cruisair A/C controls
- Splendide WD 2100 XC washer/dryer enclosed in a cabinet

Master Head

- Perrin Rowe sink with Hansgrohe faucet and shower fixtures
- Floor to ceiling glass shower door
- Kokoura white Avonite countertops
- Carrera Avonite flooring
- Opening port light with Oceanair blinds
- Mirrored medicine cabinet

VIP Stateroom

- Queen bed with individual reading lights and underbed storage
- Skylight / escape hatch
- Custom carpeting

- Port side closet with ample storage
- 28" Samsung LED HDTV television with DirecTV receiver
- Fusion AM/FM stereo with CD/DVD player
- CruisAir A/C controls
- Port and starboard opening port lights
- (2) Hideaway mini leather and wood stools
- Black leather countertops
- Private head access

Twin Stateroom

- Twin beds that convert to a full-size bed via motorized sliding bed control
- 28" Samsung television with DirecTV receiver
- Fusion AM/FM stereo with CD/DVD player
- Starboard opening port lights
- Hanging closet with storage
- CruisAir A/C controls

Guest Head

- Perrin Rowe sink with Hansgrohe faucet and shower fixtures
- Floor to ceiling glass shower door
- Kokoura white Avonite countertops
- Carrera Avonite flooring
- Opening port light with Oceanair blinds

Crew Quarters

- Twin bed with reading lamp

- Custom carpeting
- Window facing aft with Oceanair blinds
- Cruisair A/C controls with separate system in crew quarters
- Toilet and wash basin with Hansgrohe faucet
- Kokoura white Avonite countertops
- Bilge access

Lower Helm

- (2) Cocoa brown leather helm chairs
- Plastimo Offshore 105 compass
- VDO RPM tachometers
- VDO Rudder indicator
- Port and starboard MAN engine MMDS display
- Recessed storage locker with Garmin chip loader and 12v outlet
- Fuel tank gauge port/starboard
- Sliding window controls
- Side Power bow/stern controller
- Engine alarm display
- Garmin 8212 GPS display
- Garmin GMI 10 data repeaters
- Garmin GMC 10 auto pilot
- Garmin GMR 404 x HD radar with 4' open array
- Starboard stop controls
- Bennett trim tab controls with lighted display indicators
- Fireboy Xintex fire suppression system
- Close caption camera monitor for salon

Fly Bridge

- Gas-assisted and tinted staircase door
- High-gloss teak dining table
- 24" Mirage Vision Outdoor LED HDTV television with DirecTV receiver
- Fusion IP600 radio/iPod/MP3 player linked to the salon audio system
- Deck lighting (blue)
- Wycap custom Moonshine Berber carpet and cushion covers with storage below
- Refrigerated cooler
- Lava brick grill located in the wet bar
- Hard-top with lighting
- Lira stainless steel sink
- Throw ring with rescue line

Fly Bridge Electronics

- Plastimo 105 offshore compass
- Digital engine alarm system
- Garmin GMI 10 data repeater
- Garmin depth and speed
- Garmin auto pilot
- Garmin 8212 GPS display
- Garmin GMR 404 x HD radar with 4' open array
- MAN engine controls
- Side Power bow and stern variable speed control
- Bennet trim tab control
- ACR search light pad
- Fireboy Xintex fire suppression system

Aft Deck

- Electric hydraulic swim platform
- Upgraded Wood Chuck Workshop teak aft deck and swim platform
- Starboard teak step staircase to flybridge
- Port and starboard storage lockers
- Swim platform key pad
- Multi-color overhead lighting
- Fusion stereo controls
- Access to engine room and crew quarters
- Emergency bilge pump control station
- Fresh water shower
- Glendinning Cablemaster 50 amp shore power cord

Deck Equipment

- Lewmar windlass, Delta anchor, controller and anchor locker
- (2) Bow lockers
- Forward Trend Marina sky light / escape hatch
- Forward custom sun pads with individual recline settings in Movida Met Plata with Diamante Snow contrast
- Stainless steel railings with lifeline
- Fore deck washdown

Engine Room

- (2) MAN R6 engines, 800 hp, with 2-year extended CRESP MAN warranties through November 13, 2017

- Generator upgrade to 13.5kw / 60hz
- Mastervolt ChargeMaster 24/60-3 battery charger
- (2) ZF marine transmissions
- Halyard marine exhaust system
- (2) Princess aluminum 312 gallon fuel tanks
- Fireboy Xintex halon system 286

Machinery

- Sleipner power steering system
- Halyard water separator for gen set
- Reverso oil change system for the main engines and generator
- Gen set Cummins / Onan generator

Исключения

При продаже яхты исключаются личные вещи владельца.

Отказ от ответственности

Компания предоставляет описание судна или яхты добросовестно, но не может гарантировать точность этой информации, а также не ручается за техническое состояние. Покупатель должен проинструктировать своих агентов или оценщиков исследовать представленную информацию более подробно, по собственному желанию. Продажа судна или яхты, изменение цены или снятие с продажи будет происходить без предварительного уведомления.

ФОТОГРАФИИ

Arial



Bow Profile



Bow



Galley



Galley



Galley



Salon



Salon



Salon



Salon



Lower Helm



Lower Helm



Master Stateroom



Master Stateroom



Master Stateroom



Master Stateroom



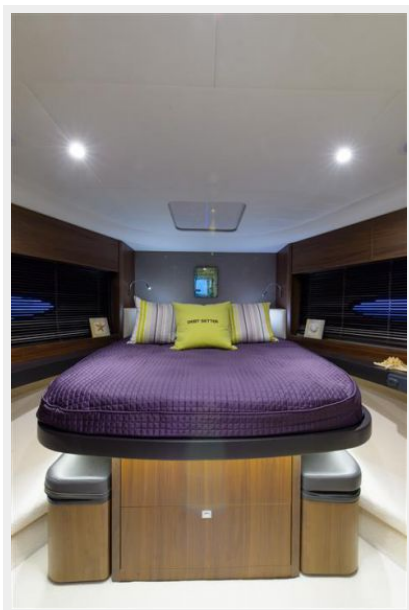
Master Head



Master Head



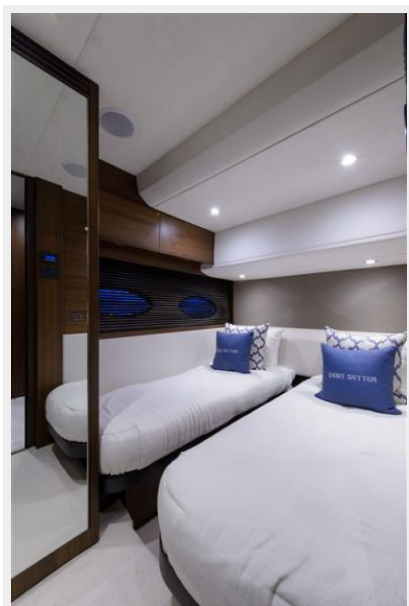
VIP Stateroom



VIP Stateroom



Twin Stateroom



Twin Stateroom



Guest Head



Washer & Dryer



Aft Deck



Aft Deck



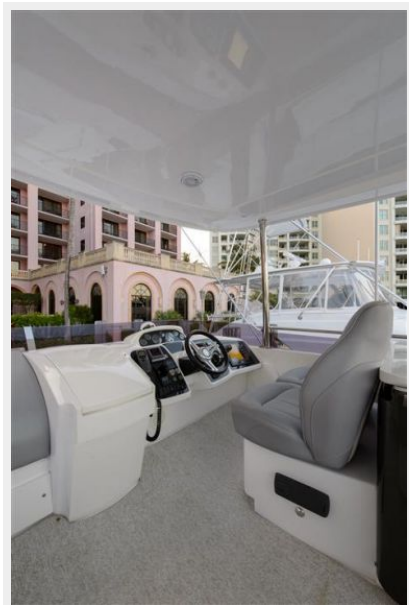
Passageway - Port Side



Passageway - Starboard Side



Fly Bridge - Helm



Fly Bridge - Helm at Night



Fly Bridge - Helm



Fly Bridge - Helm at Night



Fly Bridge



Fly Bridge - Dining at Night



Fly Bridge - Dining



Fly Bridge - Grill & Sink



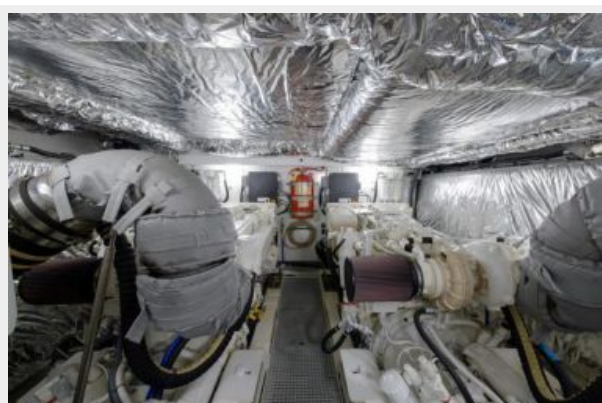
Crew Quarters



Crew Quarters



Engine Room



Engine Room



Engine Room



Engine Room



Engine Room



Starboard Stern



КОНТАКТЫ

Андрей Шестаков (Andrey Shestakov) – ведущий яхтенный брокер отдела продаж яхт и судов компании Shestakov Yacht Sales Inc. Официальный представитель Shestakov Yacht Sales Inc. для русскоговорящих клиентов в центральном офисе компании в Майами/Форт Лодердейл/Флорида/США.

Контактная информация

Email: andrey@shestakovyachtsales.com

Web: shestakovyachtsales.com

Телефоны

Краснодарский край: **+7(918)465-66-44**

США, Майами, Флорида: **+1(954)274-4435**

Время работы

Понедельник – Суббота: **9:00 - 21:00**
EDT

Воскресенье: **Закрито**

Адрес



Harbour Towne Marina, 850 NE 3rd St,
STE 213, Dania, FL 33004