

## ARIOSO — WESTPORT



**Судостроитель:** WESTPORT

**Год постройки:** 2006

**Модель:** Моторная яхта

**Цена:** **ЦЕНА ЯХТЫ ПО ЗАПРОСУ**

**Местонахождение:** United States

**Длина общая:** 130' 0" (39.62m)

**Ширина:** 26' 0" (7.92m)

**Макс. осадка:** 6' 7" (2.01m)

**Крейс. скорость:** 21 Kts. (24 MPH)

**Макс. скорость:** 25 Kts. (29 MPH)

Купить **ARIOSO — WESTPORT** а также выбрать подходящую вам яхту из нашего каталога яхт вам поможет опытный яхтенный брокер Андрей Шестаков. На сегодняшний день компания **Shestakov Yacht Sales Inc.** имеет большое количество яхт в собственном списке продаж, а также тесно сотрудничает со всеми крупными яхтенными производителями по всему миру.

Для того чтобы купить яхту **ARIOSO — WESTPORT** а также проконсультироваться по любому вопросу связанному с покупкой, продажей, чартером яхт позвоните по телефону **+7(918)465-66-44**.

# ОГЛАВЛЕНИЕ

ОГЛАВЛЕНИЕ	2
ХАРАКТЕРИСТИКИ	4
Обзор	4
Основная информация	4
Размеры	4
Скорость, вместимость и масса	4
Размещение	5
Корпус и палуба	5
Информация о двигателе	5
ПОДРОБНОЕ ОПИСАНИЕ	6
Broker's Comment	6
Walkthrough	6
Aft Deck	7
Main Salon	8
Main Deck Foyer	9
Galley	9
Pilothouse	9
Pilothouse Electronics	10
Master Stateroom	11
VIP Guest Staterooms	12
Twin Guest Staterooms	12
Crew Quarters	12
Sky Lounge	13
Fly Bridge	14
Foredeck	15
Mechanical Equipment	16
Engineer's Cabin	17
Electrical Equipment	17

---

Engine Room	18
Исключения	19
Отказ от ответственности	19
ФОТОГРАФИИ	20
КОНТАКТЫ	24
Контактная информация	24
Телефоны	24
Время работы	24
Адрес	24

---

# ХАРАКТЕРИСТИКИ

## Обзор

Welcome to ARIOSO, an exceptional 130' Westport with recent interior upgrades that give her the décor and feel of a new yacht. Entering from starboard one will reach the formal foyer with a beautiful marble floor. Going aft from the foyer one will reach a formal dining area for ten and then a spacious main salon with beautiful furnishings. Settee and ottoman to port with additional two comfortable chairs. There are two additional comfortable chairs to starboard with an end table between. In addition, the main salon has four chairs and a table perfect for playing cards or having tea or coffee. The main salon and dining area have ample storage and serving areas. ARIOSO has a beautiful well-kept cherry wood with granite countertop for serving.

## Основная информация

**Тип судна:** Моторная яхта

**Модельный год:** 2006

**Год постройки:** 2006

**Год обновления:** 2015

**Страна:** United States

## Размеры

**Длина общая:** 130' 0" (39.62m)

**Ширина:** 26' 0" (7.92m)

**Макс. осадка:** 6' 7" (2.01m)

## Скорость, вместимость и масса

**Крейс. скорость:** 21 Kts. (24 MPH)

**Макс. скорость:** 25 Kts. (29 MPH)

**Вместимость воды:** 1620 Gallons

**Вместимость сточного бака:** 1360 Gallons

**Объем топливного бака:** 9900 Gallons

## Размещение

---

Всего кают: 5

Спальные места: 10

Всего ком. состава: 7

Каюты экипажа: 3

Койки экипажа: 6

## Корпус и палуба

---

Материал корпуса: Fiberglass

Материал палубы: Teak

Комплектация корпуса: Modified V-Hull

Дизайнер корпуса: William Garden

Дизайнер экстерьера: Greg Marshal

Дизайнер интерьера: Westport

## Информация о двигателе

---

Двигатели: 2

Производитель: MTU

Модель: 12V4000

Тип двигателя: Inboard

Тип топлива: Diesel

---

# ПОДРОБНОЕ ОПИСАНИЕ

---

## Broker's Comment

---

ARIOSO is the newest Westport 130' to hit the market. She is hull number 16 of the popular 130 series. Found in excellent condition with great care by her professional crew and most recent upgrades. Her Zero Stabilizers will give one great comfort to cruise any waters. ARIOSO is a turnkey 130' that is ready for charter or private use at a moment's notice. Don't miss the opportunity to see all the attributes ARIOSO has to offer.

## Walkthrough

---

Welcome to ARIOSO, an exceptional 130' Westport with recent interior upgrades that give her the décor and feel of a new yacht. Entering from starboard one will reach the formal foyer with a beautiful marble floor. Going aft from the foyer one will reach a formal dining area for ten and then a spacious main salon with beautiful furnishings. Settee and ottoman to port with additional two comfortable chairs. There are two additional comfortable chairs to starboard with an end table between. In addition, the main salon has four chairs and a table perfect for playing cards or having tea or coffee. The main salon and dining area have ample storage and serving areas. ARIOSO has a beautiful well-kept cherry wood with granite countertop for serving. Forward to port is the state of the art galley with professional appliances including a pop-up vent for the six burner stove, ample storage and granite countertops, and features ample seating in the U-shaped dinette nook that is perfect for a casual breakfast or lunch. Further forward is the on-deck master stateroom with centerline king size bed. The master has a desk, settee, ample storage, drawers and a walk-in closet. The master his and her bathroom has marble tile, whirlpool bath, etched glass-enclosed shower, and additional drawers and closets. Mid-ship stairs lead down to the four guest staterooms located just off the foyer equipped with laundry facilities. Below one will find two VIP cabins with king berths and two guest cabins with twin berths that can convert to king berths. Each stateroom is elegantly decorated and has an ensuite head with enclosed shower. From the formal foyer one will pass a day head before going up a spiral set of stairs to the upper landing that will take one aft to the sky lounge or forward to the pilothouse. The pilothouse has raised semi-circular seating for all guests to enjoy the view while cruising, updated navigation equipment, captain's office and communications. There are very nice walk-around side decks with pilothouse entry doors, and a staircase centerline going forward down to the foredeck where there is a circular seating area (nook) with excellent visibility while cruising. Aft from the upper landing one will pass a day head and enter the sky lounge where you will find a roomy area with lots of light, bar with two bar stools, L-shaped settee to starboard and a straight settee to port with an additional chair and ottomans. This is a beautiful area for entertaining or watching movies. Going aft from the sky lounge through a large sliding door one will enter the upper aft deck to find seating area with lounging. To starboard are steps leading from the aft deck to the upper deck. Forward of that is a 6-8 person Jacuzzi hot tub. From this area one can go up a set of stairs to the sundeck or walk forward on either side of the walk-around side decks.

One can reach the boat deck from this area as well. The sundeck features a large bar with four stools that is covered with a hardtop, two built-in seating areas forward with storage under, two tables, wet bar, drink refrigerator, large barbeque and a large sun area sun pads. One can also enter the main salon through double doors from the beautiful and spacious aft deck that features a large teak circular table that seats eight guests and built-in settee with table and occasional chairs to starboard that can also be used at the table or the settee area. There is a full walk-behind bar to port and forward equipped with refrigerator, ice maker and storage for drinks and serving. The bar has three bar stools and a large TV behind. All is protected by the aft deck overhang. From the aft deck one can go up to the upper deck and sky lounge. From the aft deck one can go down a set of stairs on either side to a large swim platform that makes for easy access to the water for swimming or water sports. The aft deck also gives one access to the passerelle for easy access to shore and to the walk around deck forward. Crew quarters forward with private access through galley. Three crew cabins, three crew heads with stall showers; crew galley and lounge. Additional engineer cabin aft with double berth and ensuite head. Aft full beam walk-in engine room adjoining control room.

---

## Aft Deck

---

- 17' L x 24' W teak deck
- Fiberglass molded settee with cushions and covers
- Aft deck over hang with Halogen courtesy lights on dimmers
- 6 x 7 ½" overhead speakers
- Overhead Halogen docking lights
- 72" Round Westcoast high gloss teak dining table with mosaic Lazy Susan with cover; fixed, polished Crown Ltd. stainless steel base
- 10 Teak chairs, high gloss, with cushions and covers
- 27" Teak high gloss table with cover
- Teak high gloss bar stools with cushions & covers
- 66" x 28" Teak cocktail table, high gloss, with cushion and cover
- Port and starboard circular stairwells to swim step; polished stainless steel child gates with clear Lexan center panels
- Circular stairwell, starboard, with teak treads and polished stainless steel handrail with safety/weather hatch
- Stairwell, starboard, with door access to control/engine room
- Bar with Corian counter top, sink with lid, Grohe single lever faucet
- Stereo volume control, telephone jack
- Whirlpool under counter refrigerator with freezer
- Whirlpool ice maker and storage for acrylic bar ware
- 37" Plasma TV built in above bar with clear Lexan weather cover
- Port & starboard wing doors, ¾" Lexan
- Port & starboard fender locker

## Swim Platform

- 6' Teak with 6 polished stainless steel Euro safety hoop rails
- Fresh water wash down
- Hot & cold fresh water shower
- (2) Maxwell #3500 24V winches port and starboard with foot pedals
- (2) Manual 100 amp shore cord inlets
- (2) 100 amp, 100' shore power cords on Glendinning cable masters
- 19" Polished stainless steel cleats, port & starboard with hawses and polished stainless steel chafe guards
- Starboard engine room air exhaust with shut off flap
- Cable TV/phone inlet
- Port and starboard polished stainless steel grab rails
- (6) Underwater 110V lights across transom
- Courtesy deck lights, port & starboard, stairwell and swim platform
- Marquipt transom swim ladder
- Upgraded passarelle with independent hydraulic system to extend, lift and pivot with remote control
- Emergency stop button for passarelle

## Main Salon

---

- Port and starboard buffet with Madrona burl inlay tops in formal dining area
- 10-person formal dining table in matching cherrywood
- Overhead vaulted ceiling over dining area with Halogen down lighting
- Forward bulkhead with artwork and accent lighting
- Built in Sub-Zero wine cooler in custom cherrywood cabinet
- Matching peninsula cherrywood cabinets divide formal dining and Main Salon
- Port and stbd outboard cabinets for additional storage in matching cherrywood with Madrona burl inlay tops
- Salon overhead design with cherrywood border and Halogen down lights
- Sofa, to port, with round & rectangular end tables, each with lamp
- Rectangular cocktail table with glass top
- (2) Club chairs, 1 with ottoman
- (2) Occasional chairs with round table & lamp
- Game table with 4 chairs
- Built in bookcase with sea rails
- Entertainment center: drop-down from overhead 42" plasma TV, Crestron remote, JVC VHS player, 5-disc DVD/Blu-ray player audio/video, Denon AM/FM stereo with Surround Sound
- Aft glass bulkhead with double sliding doors to aft deck
- Carpet runner
- Large eye-level windows with fixed Roman shades and Hunter Douglas Silhouette blinds
- iPod connection
- New cabinetry



- New furniture and fabrics

## Main Deck Foyer

---

- Starboard side, large double glass sliding entrance door
- Marble flooring with inlay design
- Overhead A-Look mirrored treatment with matching cherry wood border
- Mirrored niche with accent light
- Comfortable circular stairwell to skylounge/pilothouse with cherry wood hand rail and carpet runner
- Main deck day head
- Stairwell to lower deck guest staterooms with cherry wood handrails

## Galley

---

- On deck galley
- U-shaped 8-person dinette with storage below
- Back splash, counter tops and dinette table in Blue Pearl granite
- Smoked mirrored on forward bulkhead with artwork
- Viking Professional 6-burner electric induction cooktop stove
- Napoli 42" overhead exhaust vent with down lights
- (2) Upgraded Miele ovens
- Broan trash compactor
- Asko dishwasher
- Sharpe Carousel microwave
- KitchenAid 48" refrigerator/freezer with matched cherry wood face panels
- Double stainless steel sinks, single lever faucet with pull out sprayer
- Garbage disposal
- Franke InstaHot water dispenser
- Modified and upgraded galley cabinetry
- Ample storage cabinets over and under counters
- Amtico commercial vinyl galley flooring with hardwood pattern
- Telephone/ Intercom
- 15" Sharpe flat screen TV with Pronto Control, DSS receiver
- Ship's monitor systems remote
- ICOM IC-M602 VHF
- Galley/Crew entrance portside

## Pilothouse

---

- Full beam helm station with all electronics built in and positioned to be monitored at an

eye's glance

- 29" Matching cherry wood Destroyer wheel
- Stidd helm and companion seats with adjustable backrest, fore & aft slide, arm rests, and polished stainless steel bases with foot rests
- Port and starboard sliding pilothouse doors
- Captain's desk and chair, starboard
- 20" LCD computer monitor screen with slide out keyboard
- 7" Weems & Plath brass barometer and ship's clock
- Furuno Navtex NX-500 weather receiver
- Furuno GP-150 GPS
- ICOM IC-M802 SSB radio
- Furuno FA-150 AIS
- KVH Tracphone Satphone
- Furuno P.p510 Sat. Fax printer
- Pioneer AM/FM stereo with CD player Pioneer and 2 x 7 1/2" speakers
- Furuno MMSI satellite emergency transponder (Inmarsat C Model FELCOM 15)
- Panasonic cell/landline phone
- Red chart table light with dimmer switch
- Overhead built in book case
- Raised pilothouse settee and matching cherry wood table with Madrona burlwood inlay, polished stainless steel bases and grab rail
- Aft bulkhead, mirrored center with picture
- Matching custom signal flag/ book case cabinets
- (2) Custom built in cabinet file drawers
- Port & Starboard chart flats
- 12V/24V/120V Sub breaker panel with volt & amp gauges
- Port & starboard generator remote starts
- Engine emergency shut downs
- Back up emergency clutch and throttles
- Chart drawer
- Overhead Halogen down lights with dimmers
- Indirect rope lighting with dimmers
- Black Textaline windshield cover
- Carpet runner
- (3) Windshield wipers with Exalto washers: on, off, wash & delay
- Vimar heat & smoke alarm sensors
- Pilothouse windows, 3/8" thick
- (3) King 110V heaters/defrosters for pilothouse console

## Pilothouse Electronics

- B&G H1000 digital depth finder with aft transducer
- Naiad Datum at anchor stabilization system

- Ship's alarm/ monitor system with 15" ViewSonic flat screen; monitors in galley, control room, crew lounge & engineer's cabin
- Elbex hi-resolution color CCTV with pan, tilt & zoom cameras located stbd side deck entrance, port aft deck corner, engine room; 15" ViewSonic flat screen monitor
- (2) Furuno FAR-2117 Radar units; 96 mile with 20" LCD flat screen monitors, ARPA & AIS 6' 9" antenna
- Chart system / Transas Navisailor 3000 with world charts with AIS
- Nobeltec with world charts; 20" LCD flat screen monitor
- Northstar 952X GPS with chart
- (2) ICOM IC-M602 VHF radios with remote mics
- Ritchie 6" magnetic compass
- ACR URP-102 search light
- Simrad AP-50 auto pilot
- Furuno D-Fax 210 satellite fax receiver
- Denon DVD player(for flat screen monitors at helm)
- Furuno FCV-1200L color sounder with 15" LCD ViewSonic screen
- Hailer/horn integrated with VHF
- B&G Hydra 2000 wind, speed, & depth with crew quarters remote
- Kahlenberg triple T2 horns
- Simrad RGC-85 gyro compass with interface box
- 32 station telephone system with 100' combo CATV/shore cord
- KVH V-7 Satellite Internet System with 2 VOIP lines and wireless access
- SeaTel 4004 satellite television system with European, Caribbean and North American TV
- Telular cell phone system Jastram rudder angle indicator
- Jastram jog steering with rudder angle indicator
- Security system, integrated in Westport ship's monitor system
- Ship's computer with wall mounted 20" screen and HP Officejet 6310 printer/fax
- Internet/wireless remote access
- Elbex CCTV, integrated VEI Apollo II Thermal Low Light camera
- Aft facing tow monitoring camera

## Master Stateroom

---

- Located on deck
- King size berth with drawers below
- Night stands
- Built in dresser to port with desk, chair and small refrigerator below
- Aft bulkhead: built in bookcase with sea rails, dresser, and entertainment center
- Entertainment center with 32" flat screen TV, VHS player, 5-disc DVD/Blu-ray audio/video player, AM/FM stereo receiver with Surround Sound
- Walk-in cedar-lined wardrobe with digital wall safe
- Love seat, stbd, with rectangular stack tables
- Large windows with fixed Roman shades and Hunter Douglas Silhouette blinds

## Master Head

- His and hers configuration
- Whirlpool bath
- (2) Sinks
- Cloths hamper
- Shower with full body sprayers
- Digital air conditioner control
- Vanity with make up mirror and stool
- Ample medicine lockers

## VIP Guest Staterooms

---

- King berth with drawers and storage below
- Night stands
- Cedar-lined wardrobe with full length mirror
- (2) Opening port lights with screens Shoji privacy screens
- Combination dresser/entertainment center with cherry wood doors
- Sony 26" flat screen color TV with remote control
- Denon DVD audio/video
- Denon AM/FM stereo receiver with Dolby Surround Sound
- Ensuite head with stall shower

## Twin Guest Staterooms

---

### Port & Starboard

- Twin berths with head boards
- Both twin berths can convert to kings
- Night stand
- Opening port light with screen Shoji privacy screens
- Cedar-lined wardrobe
- Built in entertainment center with cherry wood doors with dresser below
- Sony 26" flat screen color TV with remote control
- Denon DVD audio/video
- Denon AM/FM stereo receiver with Dolby Surround Sound
- Ensuite head with stall shower

## Crew Quarters

---

- Forward access from outside through galley door and down from galley
- (2) Crew cabins, each with upper & lower berths and ensuite head

- Captain's cabin with double berth and ensuite head; 32" Toshiba flat screen TV with DSS receiver
- Entertainment center with Denon DVD player audio/video, Denon AM/FM stereo receiver, Sony 23" flat screen color TV with remote control
- Miele washer/dryer
- A/C breaker sub panel

## Crew Galley

- Sharp Carousel microwave, built in overhead
- Stainless steel sink with single lever sprayer/faucet
- Sub-Zero under counter refrigerator
- Ample storage lockers over & under counter
- Electronics: ICOM IC-M602 VHF, B&G Hydra 2000 electric compass, B&G h1000 digital depth finder
- Crew dinette with 6-person settee, storage below
- All crew cabins with privacy doors, AM/FM stereos with CD players, cedar-lined hanging lockers, and 5-drawer dressers

## Sky Lounge

- Custom built sofa
- Cocktail table
- End table with lamp
- Leather arm chair with ottoman
- Built in desk with chair and overhead bookcase
- Forward bulkhead with built in bookcases and storage drawers below
- Entertainment center with Sharp 52" flat screen TV, Denon DVD/Blu-ray audio/videoplayer, 5-disc CD player, Denon AM/FM stereo receiver, Surround Sound, Crestron remote Integrated Playstation 3, Wii, X-Box, PC with internet and iPod connectivity
- Bar with Absolute Black granite counter top, 2 chair/bar stools, Gemini polished stainless steel sink with hot & cold nickel plated single faucet, Whirlpool Gold ice maker and liquor storage below counter
- Work counter with Absolute Black granite counter top
- Under counter refrigerator
- Ample storage overhead and under counter
- 4-person game table
- Carpet runner
- Large windows and stainless steel framed glass sliding doors to boat deck
- (4) Upholstered chairs at game table
- Day Head
- Mirrored overhead with matching cherry wood border

- Absolute Black granite counter top with black Kohler Caxton undermount sink
- Framed Bevel-edge mirror
- Polished gold faucet
- Head Hunter Royal Flush head

## Fly Bridge

---

- Fiberglass hard top with 7" polish stainless steel courtesy lights, 24V on dimmers
- Welded aluminum mast
- AM/FM stereo with CD player with two 7 ½" overhead speakers
- (2) 7 ½" speakers in port & stbd settees
- Built in wet bar with Corian counter top, sink with cover
- Grohe single lever faucet, JennAir electric grill, 21" x 28" with lid, stainless steel flame protector and alarm
- Whirlpool ice maker
- Whirlpool refrigerator with freezer
- Accessory drawers
- Under counter storage
- Telephone and cable TV outlets with waterproof covers
- (4) Fixed bar stools with cushions and covers
- Venturi tinted windshield with stainless steel polished frame
- Molded fiberglass sun pad with cushions and covers
- Port & Starboard molded fiberglass settees with cushions and covers
- Fixed cocktail tables with fiberglass tops and covers
- Built in double door storage locker, forward
- Child gate polished stainless steel frame with Lexan inner panel
- Painted non-skid deck
- Removable access ladder to top of hardtop

## Boat Deck

- Access from aft deck and from sky lounge
- Molded fiberglass stairwell to flybridge with polished stainless steel hand rail
- 6-person hot tub with 11 kW heater; cover and teak step
- Molded fiberglass settee with cushions & cover; life jacket storage below
- 40" teak table, high gloss varnish, with cover
- (2) Speakers, 7 ½" built in to sky lounge overhang, with volume control
- (2) Halogen deck lights built in to sky lounge overhang
- Child gates at port & starboard walk-arounds
- Access to aft section of boat deck and top of stairwell from aft deck
- 2000 lb Nautical Structures davit with full hydraulic extending & telescoping boom
- Fresh water wash down
- Large capacity ice maker

- To starboard: custom matching cabinet barbecue 92" x 30" x 36" with matching Corian counter top
- Solaire 2-burner LP gas stove with stainless steel cover
- GE Refrigerator with freezer, built in under counter, 115V
- Storage cover
- (2) Zodiac 8-person canister life raft, SOLAS rated, with hydro static release & cover
- Nautica 18' RIB dinghy 2006, wide body, with nav lights, bilge pump, ICOM IC-M302 VHF, speedometer, tachometer, fuel gauge, Ritchie 3" magnetic compass, Lowrance digital depth finder, horn 4 x 6" stainless steel flip up cleats, fire extinguisher, 3-step stainless steel swim ladder, 115 HP Yamaha 4-stroke electric start engine, power trim and tilt, water separator filter, bow rail, deck chocks, tie downs, lift bridle
- (2) Fiberglass dunnage box, 47" x 27" x 26"
- Air intake for engine room with Delta T de-mister
- 2-person kayak
- (2) Yamaha wave runners with covers
- 5' polished stainless steel flag staff (removable)
- Teak deck, except tender area (painted non-skid)
- EPIRB with hydrostatic release
- S.A.R.T. Na-Sart
- 24" Life ring
- Euro-style polished stainless steel hoop rails around perimeter of boat deck
- Custom teak tables
- (2) Man overboard 360' emergency life buoy markers
- Air intake stainless steel mist eliminators installed

## Foredeck

---

- Polished stainless steel flag staff
- Forward built-in sun pad with cushion, cover and storage below
- Port & starboard grab rails
- Fresh water wash down with quick disconnect brass fitting
- Deck courtesy lights
- Chain locker access through 37" x 38" Freeman watertight hatch
- Keyhole circular seating with cushions and cover
- Teak compass rose deck design
- 2x Stereo speakers, 7" with volume control 4x 19" Polished stainless steel cleats with polished stainless steel hawse pipes
- Anchor System
- 2x Maxwell VWC 6000 hydraulic winches with polished stainless steel deck drain plate, band brakes, 2 devil claws, 24V hand held remotes with up and down; 30' extension cord with P.T.O. off starboard generator
- 2x 270 kg. Galvanized anchors with polished stainless steel anchor plates
- Auto fresh water anchor wash

- Polished stainless steel anchor grab rail with 12" polished stainless steel ship's bell
- Anchor with 400' x 5/8" chain
- Anchor with 300' x 5/8" chain
- PTO's off both generators upgraded to SAE 'C'

## Portuguese Bridge

- Access from Foredeck, Pilothouse, Sky Lounge or Boat deck
- Stair case from foredeck with polished stainless steel grab rail
- Port & Starboard built in settees with cushions and covers
- Deck courtesy lights
- Make up air intake
- Port & Starboard flip out wing control stations with electronic clutch and throttles with rudder angle indicators, synchronizer, low idle, start stops, bow thrusters, horn, jog steering
- Custom polished stainless steel with Lexan panels port & starboard at boat deck; child gates
- (6) Deck drains with polished stainless steel grates
- (14) 7" polished stainless steel overhang courtesy lights

## Mechanical Equipment

- Jastram jog steering with rudder angle indicator
- Security system, integrated in Westport ship's monitor system
- Ship's computer with wall mounted 20" screen and HP Officejet 6310 printer/fax
- Internet/wireless remote access
- Elbex CCTV, integrated VEI Apollo II Thermal Low Light camera
- Aft facing tow monitoring camera
- Overhead fluorescent lighting
- Freeman watertight access door to engine room
- (3) Fuel tank sight gauges
- Main engine start/stops with gauge displays
- Bilge pump emergency system with 2 x 115V Baldor pumps; 10-bilge compartment manifold system and salt water prime manifold
- (13) Remote mounted 24V auto/manual bilge pumps
- Electrical panel: 110V/220V/24V with generator remote start, with oil pressure, voltmeter, water temp, & hour meter gauges
- Heat, smoke, and carbon monoxide alarms
- Ship's alarm/ systems monitor - remote unit
- Engine room air intake/ exhaust fan - manual speed controls
- Fresh water system - manual pressure gauge
- (2) Stabilizer system pressure gauges
- Fuel transfer pump with timer and flow meter, 110V
- Bilge suction pressure gauge



- Head Hunter tidal wave HMX sewage treatment system
- (2) Fiberglass holding tanks with tank sentry
- Manual engine room fire system release
- (2) Sea Recovery water makers: 1400 gallons per day each, with fresh water flush; product test faucets; 2x 110V fresh water pumps; 1x back up 24V pump; 2x Aqua-Pure filters, UV filter light
- Freeman opening port light
- Panasonic telephone/intercom
- Naiad 420 stabilizers with 25.1 sq ft fins; hydraulic pumps on both main engines with low oil pressure alarm
- Firefighting equipment installed including on/off control on emergency fire pump

## Engineer's Cabin

---

- Double berth with reading lamp
- Toshiba 14" flat screen color TV with remote control
- Phone/Intercom
- Pioneer stereo AM/FM with CD player
- Ship's system monitor
- Desk with drawers & stool
- Heat/smoke/carbon monoxide sensors
- Cedar-lined hanging locker
- Built in dresser with 5 drawers
- Ensuite head with stall shower

## Electrical Equipment

---

- Single phase electrical system 220V/110V/24V/12V
- 2x 65 kW Northern Lights generators: 1800 RPM, sound shield, hydro elastic mounts, water lift mufflers, exhaust water separators - P: 21390 hrs / S: 21454 hrs.
- Power take off on both gensets for bow thruster and anchor winches
- Remote start & stops in pilothouse for generators
- Manual oil pressure and water temp gauges installed on both generators
- A/ Sea shore power converter, upgraded from 50 KVA to 75 KVA
- 24V 95 amp Newmar Phase Three battery charger - ship's system
- 12V 70 amp Newmar Phase Three battery charger - ship's system
- 24V 40 amp Newmar Phase Three battery charger - main engines
- 12V 40 amp Newmar Phase Three battery charger - generators
- Lightning protection/ hull dyna plate with mast probe
- 2x 100 amp X 100' shore cords on Glendinning cable masters, starboard stern
- 2x 100 amp inlets, starboard bussel
- 100' Cable TV/phone combination cord with Hubbel inlet

- Batteries - Gelcell 225 amp hour each
- Isolation transformers with boost
- Bonding system: all bronze thru hulls to transom zincs and shaft wipers

## Air Conditioning

- Aqua Air 20 ton chiller with 4 compressor units
- 2x Seawater pumps
- Main pump plus standby pump with separate sea strainers
- Water discharged underwater
- 15x Air handlers
- Make up air serves master stateroom, guest staterooms foyer, engineer's cabin, and crew area

## Engine Room

- Twin 12V4000 MTU/DDC 2735 HP with Air Seps, block heaters, dual Sea Pro 30 micron filters, 24V fuel prime pumps, synchronizer
- Manual oil pressure & water temp gauges
- ZF gears, Model ZF4650 A with 2.467:1 ratio
- Auto oil change system with 110V Dayton brass impellor pump for mains, gears, & 2 generators
- Fresh oil tank - 78 gallons with deck fill, sight gauge & spigot
- Waste oil tank - 33 gallons with sight gauge
- Alpha Laval model MIB 3035-13 fuel centrifuge fuel filter
- 220V Air compressor for horn, gasoline tank, & general engine room requirements
- Upgraded American bow thruster
- Tides dripless shaft and rudder seals
- Props 1 set only 50" x 44 3/4" x 5 blade, Shafts 4 1/2"
- Jastram power steering, commercial grade with port and stbd main engine hydraulic pumps; 30 gallon reservoir with sight gauge and 25 micron filter
- Engine room floor: circular design rubber tile
- FM200 auto/manual fire system
- CCTV camera - color with pan, tilt, & zoom
- Engine room air intake from boat deck with manual fan speed controls, Delta T de-misters

## Storage Utility

- Access through transom watertight door or from engine room watertight door
- Air conditioning room
- Hot water locker with 120 gallon tank with expansion tank & hot water circulating pump
- Traulsen full size refrigerator/freezer, each 115V, stainless steel
- (2) Additional storage areas under floor
- Rudder area access through

- Freeman watertight hatch
- (2) Scuba tanks

## Исключения

---

При продаже яхты исключаются личные вещи владельца.

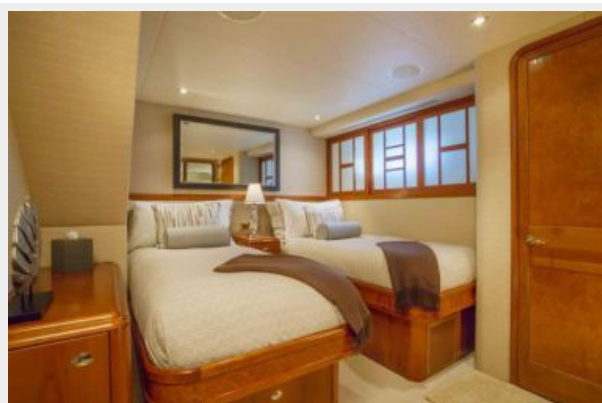
## Отказ от ответственности

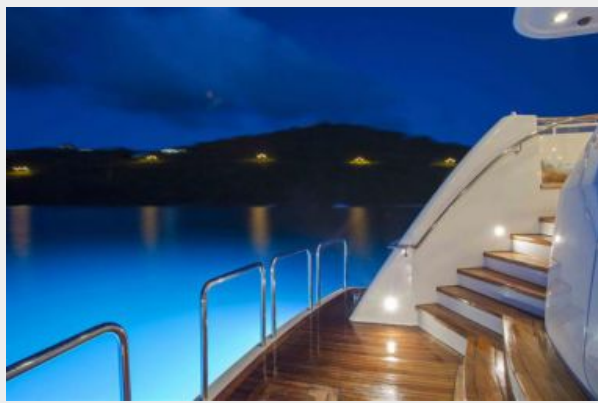
---

Компания предоставляет описание судна или яхты добросовестно, но не может гарантировать точность этой информации, а также не ручается за техническое состояние. Покупатель должен проинструктировать своих агентов или оценщиков исследовать представленную информацию более подробно, по собственному желанию. Продажа судна или яхты, изменение цены или снятие с продажи будет происходить без предварительного уведомления.

# ФОТОГРАФИИ









# КОНТАКТЫ

---

Андрей Шестаков (Andrey Shestakov) – ведущий яхтенный брокер отдела продаж яхт и судов компании Shestakov Yacht Sales Inc. Официальный представитель Shestakov Yacht Sales Inc. для русскоговорящих клиентов в центральном офисе компании в Майами/Форт Лодердейл/Флорида/США.

## Контактная информация

---

Email: [andrey@shestakovyachtsales.com](mailto:andrey@shestakovyachtsales.com)

Web: [shestakovyachtsales.com](http://shestakovyachtsales.com)

## Телефоны

---

Краснодарский край: **+7(918)465-66-44**

США, Майами, Флорида: **+1(954)274-4435**

## Время работы

---

Понедельник – Суббота: **9:00 - 21:00**  
EDT

Воскресенье: **Закрето**

## Адрес

---



Harbour Towne Marina, 850 NE 3rd St,  
STE 213, Dania, FL 33004