

## BUCKWILDERRR — CRUISERS YACHTS



**Builder:** [Cruisers Yachts](#)

**Year Built:** 2005

**Model:** Cruiser

**Price:** PRICE ON APPLICATION

**Location:** United States

**LOA:** 52' 3" (15.93m)

**Beam:** 15' 6" (4.72m)

**Cruise Speed:** 26 Kts. (30 MPH)

**Max Speed:** 30 Kts. (35 MPH)

Our experienced yacht broker, Andrey Shestakov, will help you choose and buy a yacht that best suits your needs **Buckwilderrr — Cruisers Yachts** from our catalogue. Presently, at Shestakov Yacht Sales Inc., we have a wide variety of yachts available on our sale's list. We also work in close contact with all the big yacht manufacturers from all over the world.

If you would like to buy a yacht **Buckwilderrr — Cruisers Yachts** or would like help answering any questions concerning purchasing, selling or chartering a yacht, please call **+1(954)274-4435**

# TABLE OF CONTENTS

---

TABLE OF CONTENTS	2
SPECIFICATIONS	4
Overview	4
Basic Information	4
Dimensions	4
Speed, Capacities and Weight	4
Accommodations	5
Hull and Deck Information	5
Engine Information	5
DETAILED INFORMATION	6
Overview	6
Accommodations Overview	6
Salon/Dinette	6
Galley	7
Master Stateroom	7
VIP Guest Stateroom	8
Guest/Day Head	8
Electronics & Navigation Equipment	9
Electrical	9
Deck Equipment & Features	10
Mechanical Equipment & Engine Details	11
Factory Options	12
Exclusions	12
Exclusions	12
Disclaimer	12
PHOTOS	14
CONTACTS	23
Contact details	23

---

Telephones	23
Office hours	23
Address	23

---

# SPECIFICATIONS

---

## Overview

---

**LOOK NO FURTHER....BEST PRICED ON THE MARKET!**

**This 2005 52' Express Cruiser is turn key and ready to cruise.**

**Only 475 original hours on Main Engines and 740 original hours on Generator.**

**All service is up to date turn-key and ready for your next adventure**

**Fully optioned with everything including: 800# Nautical Structures Davit System for your favorite water toy.**

**SEE FULL SPECS BELOW FOR ALL DETAILS.**

## Basic Information

---

**Category:** Cruiser

**Sub Category:** Express

**Model Year:** 2005

**Year Built:** 2005

**Country:** United States

**Cockpit:** Yes

## Dimensions

---

**LOA:** 52' 3" (15.93m)

**Beam:** 15' 6" (4.72m)

**MFG Length:** 52' 0" (15.85m)

## Speed, Capacities and Weight

---

**Cruise Speed:** 26 Kts. (30 MPH)

**Max Speed:** 30 Kts. (35 MPH)

**Water Capacity:** 150 Gallons

**Holding Tank:** 75 Gallons

**Fuel Capacity:** 500 Gallons

---

## Accommodations

---

**Total Cabins:** 2

**Total Heads:** 2

---

## Hull and Deck Information

---

**Hull Material:** Fiberglass

---

## Engine Information

---

**Engines:** 2

**Manufacturer:** Volvo Penta

**Model:** D-12

**Engine Type:** Inboard

**Fuel Type:** Diesel

---

# DETAILED INFORMATION

---

## Overview

---

**LOOK NO FURTHER....BEST PRICED ON THE MARKET!**

**This 2005 52' Express Cruiser is turn key and ready to cruise.**

**Only 475 original hours on Main Engines and 740 original hours on Generator.**

**All service is up to date turn-key and ready for your next adventure**

**Fully optioned with everything including: 800# Nautical Structures Davit System for your favorite water toy.**

**SEE FULL SPECS BELOW FOR ALL DETAILS.**

## Accommodations Overview

---

This spacious and luxurious vessel provides a two Stateroom layout. The Master Stateroom is full-beam aft with private en-suite Head and separate shower. The VIP Guest Stateroom is forward. The Guest / Day Head with separate shower can be accessed directly for the VIP Guest Stateroom or the Salon. The large, comfortable Salon/ Dinette and fully appointed Galley offer an open space for relaxing and entertaining.

- Neutral décor.
- UltraLeather upholstery.
- Cherry joinery, cabinetry and trim.
- Solid surface countertops.
- Neutral carpeting with snap-in protective runners.
- Halogen 24V DC lighting throughout interior.
- Vimar light switches throughout.
- Central Vacuum system.
- 6' 6" Headroom throughout.

## Salon/Dinette

---

The large Salon/ Dinette is to starboard, open to the Galley.

- Large crescent-shaped UltraLeather Flexsteel sectional sofa with recliners can seat (8) comfortably.

- Cherry wood folding leaf coffee/ dinette table for dining or entertaining.
- Overhead cabinetry with curved cherry doors.
- Accented mirrored bulkheads with etched borders.
- Sony Home Theater Surround Sound.
- Viewing of 30" TV located in the Galley.
- Abundant light and ventilation.
- Twin overhead hatches provide natural lighting.
- (4) Opening portals.
- Cherry treads on cabin entry stairs.

---

## Galley

---

The galley is to port, open to the Salon/ Dinette.

- Nova Kool under counter side-by-side refrigerator and freezer.
- Princess (2) burner electric stove with Eurokera glass top.
- Sharp Carousel built-in stainless steel convection/ microwave.
- Broan trash compactor.
- Under counter wine cooler.
- Black and Decker Spacemaker coffee maker.
- Sharp 30" LCD flatscreen TV for viewing from Salon.
- Over-sized solid surface countertop.
- Double stainless steel sink with cover.
- Spray faucet.
- Abundant upper and lower storage cabinets and storage drawers.
- Wine/ liquor curved end cabinet with glass door and back-lighting.
- Exhaust fan system.
- Overhead lighting.
- (2) Opening portals.

---

## Master Stateroom

---

The Master Stateroom is full-beam aft with private en-suite Head with separate shower.

- Center-line queen berth with therapeutic foam mattress.
- Decorator bed coverings and shams.
- Decorative mirrored headboard at bulkhead.
- Built-in cherry nightstands with Corian countertops.
- Built-in glass curio shelving.
- Cedar-lined clothes lockers.
- Port and starboard built-in dressers with abundant drawer storage.
- Decorative side lamps.
- Reading lights.

- Entertainment Center with Sharp Aquos 20" LCD flatscreen TV, Blaupunkt DVD player and Sony Stereo system with remote control.
- Full standing headroom.
- (6) Vertical opening portals.
- Spendide 2000S Washer/ Dryer combo.
- Privacy door.

### **Master En-Suite Head**

- Techma electric ceramic marine toilet.
- Cherry vanity with Corian countertop, ceramic sink and storage below.
- Large mirrored medicine cabinet.
- Separate stall shower with adjustable shower wand, water controller and bi-fold glass door.
- Towel rack.
- Ceramic tile flooring.
- Exhaust fan and A/C vent.
- Waste level monitor.
- Privacy door.

## **VIP Guest Stateroom**

---

The VIP Guest Stateroom is forward with private access to the Guest/ Day Head.

- Center-line queen berth with therapeutic foam mattress.
- Decorator bed coverings and shams.
- Decorative headboard with mirrored bulkhead.
- Steps on each side of berth pedestal.
- (3) Drawers built into front of berth pedestal.
- Cedar-lined clothes locker.
- Cherry storage cabinetry at port and starboard gunwales.
- Reading lights.
- Overhead lighting.
- Sharp Aquos 13" LCD flatscreen TV and Blaupunkt DVD with remote control.
- Overhead hatch with screen and shade.
- (2) Opening portals with screens.
- Privacy door.

## **Guest/Day Head**

---

The Guest/ Day Head is to port forward with private access from the VIP Guest Stateroom and the Salon.

- Techma electric ceramic marine toilet.



- Cherry vanity with Corian countertop, ceramic sink and storage below.
- Large mirrored medicine cabinet.
- Cherry storage cabinetry above back splash.
- Separate stall shower with adjustable shower wand, water controller and bi-fold glass door.
- Ceramic tile flooring.
- Exhaust fan and A/C vent.
- Waste level monitor.
- Privacy doors.

## Electronics & Navigation Equipment

---

- Garmin 740S GPS/ Touch Screen Fish Finder/ Chart Plotter.
- Raymarine E120 Plotter/ GPS/ Radar.
- Raymarine 240 VHF Radio with External Speaker.
- Raymarine Ray 53 VHF Radio.
- Raymarine ST6001 Auto Pilot.
- 72 Mile Radar Scanner.
- Plastimo Offshore 135 Compass.
- Digital Depth Sounder.

### Controls for:

- Power Steering.
- Side Power Bow Thruster.
- Jabsco Remote Spotlight.
- Sea Key System.
- Bennett Trim Tabs.
- Electronic engine controls.
- Electronic Engine Gauges.
- Windlass controls.
- Windshield Washer/Wipers.
- Windshield Defogger.
- Hailer horn.
- Helm Clarion AM/FM/CD Interfaced Stereo with Subwoofer, Amplifier and (4) Speakers.
- Helm / Cockpit Air Conditioning/ Heating System.

## Electrical

---

Wiring is color-coded, numbered and neatly secured in wire looms per ABYC guidelines.

All lights replaced with LED along with new LED TV's. New Underwater Lights.

- Onan 13 kW Generator with remote pane and sound enclosure - 740 hours.

- (2) Charles 30 amp 24V DC Battery chargers.
- Batteries in FRP boxes with On-Off switches and isolators.
- Battery parallel switch.
- Glendenning 50 amp Cablemaster Shore Power reel (Transom).
- 125/250V AC Distribution panel with thermal circuit breakers.
- 12/24V DC Distribution panel with thermal circuit breakers.
- Electrical outlets (interior and exterior, GFCI where needed).
- Telephone/CATV inlet.

---

## Deck Equipment & Features

---

- Blue accent gel coat hull.
- Hard top with skylight and twin opening hatches.
- Stainless steel windshield frame.
- Center walk-thru windshield with hand rail.
- Stamoid Bimini and Mask.
- Extended aft Bimini top.
- Stamoid Cockpit curtains.
- Hardtop Cockpit awning.
- Air conditioned Helm and Cockpit with reverse cycle.
- Instrumentation console.
- (2) Adjustable high back Captain's Chairs with armrests and bolsters.
- Large L-shaped companion Helm lounge to port.
- Very large U-shaped Cockpit lounge aft with storage below.
- Fiberglass Cockpit table top with fold-up wings and drink holders.
- Cockpit U-Line refrigerator/ ice maker.
- Cockpit Wet Bar console to port with hot/ cold sink, electric grill, bottle storage and trash chute.
- Samsung 20" Flatscreen TV with Blaupunkt DVD player concealed in Wet bar console.
- AM/FM/CD stereo, subwoofer, amp.
- Removable snap-in carpeting.
- Cockpit washdown system.
- 120V Outlet.
- Abundant storage.
- Jabsco remote spotlight.
- Exterior courtesy lighting.
- Navigation lighting.
- Flat, easily accessible Foredeck.
- Foredeck sun lounge cushions.
- Anchor wash down system.
- Maxwell 1200 windlass.
- Polished stainless Anchor roller.

## Transom Area

- Nautical Structures MCR800 Hide-away 800 lb Davit system with remote control.
- Glendenning 50 amp Cablemaster Shore Power reel.
- Transom lounge with removable cushion.
- Abundant storage.
- Drink holders.
- Hot/ Cold Transom shower.
- Storage lockers.
- Molded steps to gunwale.
- Companionway to Cockpit.
- Clarion Stereo controls.
- (2) 12" Docking cleats.
- Extended swim platform.
- Swim ladder.
- Weaver Dinghy Chocks.

## Mechanical Equipment & Engine Details

Extremely accessible and workable Engine Room. Access is through a deck hatch in the center of the Cockpit and has standing room throughout with full outboard access. All valves, switches and controls are clearly labeled.

- Twin 715hp Volvo Penta D-12 Diesel Engines - 475 hours.
- ZF Transmissions - V-drives.
- Sea Star Hydraulic Steering - Power Assist.
- Side Power bow thruster.
- (3) Air conditioning systems with reverse cycle heating.
- Bennett trim tabs.
- Reverso oil changer system for Engines and Genset.
- 20 gallon Water heater.
- (2) Techma Quietflush electric ceramic marine toilets.
- Macerator and holding tank.
- Fireboy Fire suppressant system.
- CO Alarms.
- Monitor system with high water alarms.
- Bonding system.
- Fuel cross over system.
- Fuel overflow recovery system.
- 2½" diameter Aquamet 22 prop shafts.
- Dripless shaft seals.
- Engine Room with stand up head room, abundant storage, (4) bright lighting fixtures, 110V

outlet, Delta-T engine room blowers and 360° Engine access.

---

## Factory Options

---

- Décor package.
- Cherry entry treads in cabin.
- Vertical, opening portholes in aft Master Stateroom.
- Carpet runners.
- Central vacuum system.
- Washer/ Dryer combo, 120V.
- Sharp 30" LCD TV with Sony Home theater system in Galley /Salon.
- Sharp 20" LCD TV and Blaupunkt DVD in aft Master Stateroom.
- Sharp 13" LCD TV and Blaupunkt DVD in forward VIP Guest Stateroom.
- Therapeutic foam mattresses.
- Techma Quietflush heads.
- Macerator pump out for holding tank.
- Waste level monitor.
- Foredeck sun lounge cushions.
- Climate controlled Cockpit.
- Electric grill in Cockpit.
- Cockpit table.
- Cockpit wash-down system.
- Anchor wash-down system.
- Blue accent gel coat hull.
- Bow thruster.
- Oil change system.
- Remote Control Nautical Structures MCR 800lb davit system.

---

## Exclusions

---

- Personal items.

---

## Exclusions

---

Owner's personal belongings.

---

## Disclaimer

---

The Company offers the details of this vessel or yacht in good faith but cannot guarantee or warrant the accuracy of this information nor warrant the condition of the vessel. A buyer should instruct his representatives, agents, or his surveyors, to investigate such details as the buyer

desires validated. This vessel or yacht is offered subject to prior sale, price change, or withdrawal without notice.

# PHOTOS



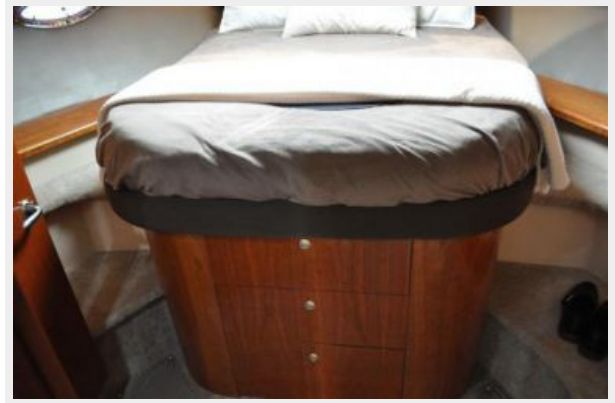




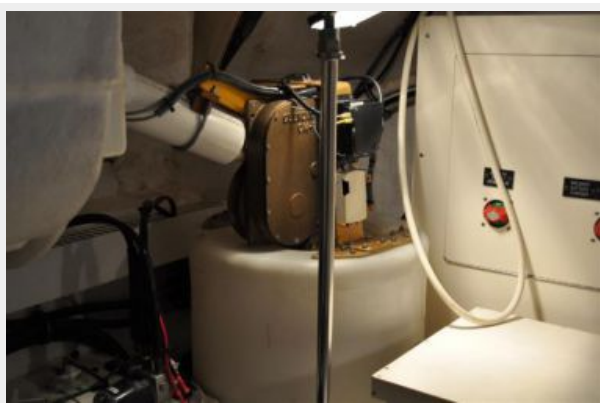














# CONTACTS

---

Andrey Shestakov, leading yacht broker of the sales department of Shestakov Yacht Sales Inc. Shestakov Yacht Sales Inc., the official representative of the Miami/Fort Lauderdale FL headquarters.

## Contact details

---

Email: [andrey@shestakovyachtsales.com](mailto:andrey@shestakovyachtsales.com)

Web: [shestakovyachtsales.com/en/](http://shestakovyachtsales.com/en/)

## Telephones

---

USA: +1(954)274-4435

## Office hours

---

Monday – Saturday: **9:00 - 21:00** EDT

Sunday: **closed**

## Address

---



Harbour Towne Marina, 850 NE 3rd St,  
STE 213, Dania, FL 33004