

CHRISTINE — SABRE YACHTS



Builder: SABRE YACHTS

Year Built: 2007

Model: Cruiser

Price: PRICE ON APPLICATION

Location: United States

LOA: 42' 3" (12.88m)

Beam: 14' 4" (4.37m)

Max Draft: 3' 9" (1.14m)

Our experienced yacht broker, Andrey Shestakov, will help you choose and buy a yacht that best suits your needs **Christine — SABRE YACHTS** from our catalogue. Presently, at Shestakov Yacht Sales Inc., we have a wide variety of yachts available on our sale's list. We also work in close contact with all the big yacht manufacturers from all over the world.

If you would like to buy a yacht **Christine — SABRE YACHTS** or would like help answering any questions concerning purchasing, selling or chartering a yacht, please call **+1(954)274-4435**

TABLE OF CONTENTS

TABLE OF CONTENTS	2
SPECIFICATIONS	3
Overview	3
Basic Information	3
Dimensions	3
Speed, Capacities and Weight	3
Accommodations	3
Hull and Deck Information	3
Engine Information	4
DETAILED INFORMATION	5
Layout	5
Inside Equipment	5
Outside Equipment	5
Electronics	6
Galley	6
Mechanical	6
Hull and Deck Features	7
Salon and Staterooms	7
Exclusions	8
Disclaimer	8
PHOTOS	9
CONTACTS	14
Contact details	14
Telephones	14
Office hours	14
Address	14

SPECIFICATIONS

Overview

This meticulously maintained 42 Sabre features the factory hardback enclosure, General Hydraulics swim platform with remote, twin Yanmar 480hp electronic engines with 610 hours, Raymarine E120 plotters, radar, depthfinder and autopilot, ultraleather in the salon, bow thruster and the list goes on and on. Complete records from 2011 on, from an open checkbook owner. She will not disappoint!

Basic Information

Category: Cruiser

Model Year: 2007

Year Built: 2007

Country: United States

Dimensions

LOA: 42' 3" (12.88m)

Beam: 14' 4" (4.37m)

Max Draft: 3' 9" (1.14m)

Clearance: 14' 1" (4.29m)

Speed, Capacities and Weight

Displacement: 29000 Pounds

Water Capacity: 160 Gallons

Holding Tank: 60 Gallons

Fuel Capacity: 450 Gallons

Accommodations

Total Cabins: 2

Total Heads: 1

Hull and Deck Information

Hull Material: Fiberglass

Engine Information

Engines: 2

Manufacturer: Yanmar

Model: 6LY3ETP

Engine Type: Inboard

Fuel Type: Diesel

DETAILED INFORMATION

Layout

This layout sleeps four owners/guests in two double staterooms plus the salon settee is sized to be another comfortable berth if you should need it. The forward master stateroom features a centerline island berth with 4 large drawers at the foot of the berth. There are storage cabinets outboard and above the berth, to port is a chest of drawers, to starboard is a cedar-lined hanging locker. Continuing aft to starboard there is a private access door to the head, which features a vanity/sink with a Corian counter top, cherry trimmed adjustable mirror and a clear Plexiglass circular shower stall. There is a wet locker outboard of the shower, which also has a built in seat and teak grate. The spacious main salon displays the fine craftsmanship that is found throughout the boat and is highlighted by a satin-varnished cherry interior woodwork and a teak and holly sole. Featuring a L-shaped Ultrasuede settee (with storage outboard and below), with a beautifully finished inlaid bird's eye maple adjustable table. Across from the settee is a bulkhead mounted flat screen TV and entertainment system. The fully equipped galley is aft to port boasts a Tundra fridge/freezer, ceramic cook top, and microwave oven, as well as abundant storage and Corian counter tops. The guest stateroom is opposite the galley and offers a convertible double berth, chest of drawers, and lockers under and outboard of the berth. The fully enclosed and climate controlled helm deck offers excellent 360 degree views that will be appreciated underway as well as when anchored or docked. The helm is to starboard and features a full Raymarine Electronics package and excellent visibility which will be appreciated by the helmsman. A Stidd chair is found forward at the helm, with a single Stidd chair to the port side. There is an L-shaped Ultraleather settee with inlaid table aft to port, and to starboard you will find a wet bar with a Corian counter top, Tundra refrigerator and a single bench seat. The cockpit is both spacious and functional. There is a double bench seat to port and a single opposite, separated by the companionway that leads up to the helm deck. The full beam lazarette offers a tremendous amount of storage and is accessed via 3 deck hatches. A walk-thru transom door leads out to the hydraulic swim platform. The wide side decks and large diameter stainless steel hand rails along with a raised teak toe rail make moving around the deck both secure. The teak toe rail, as well as the rest of the vessel, is kept in Bristol fashion.

Inside Equipment

Refrigerator Deep freezer - in galley floor Battery charger - Xantrax 60 amp

Outside Equipment

Electric windlass

Electronics

- **Dual E 1200 Ray Marine Touch Screen GPS, Radar, Sonar Monitors**
- **Ray Marine Smartpilot Autopilot**
- **Ray Marine Tridata speed, depth, log**
- **Ray Marine SeaTalk system VHF**
- **Ritchie Powerdamp compass**
- **Bennett trim tab controls with electronic gauges**
- **Imtra bow thruster**
- **3 ea. windshield wiper controls**
- **Engine instrument gauges**
- **Electronic engine controls with engine synchronizers**

Galley

- **Princess Gourmet 2 burner ceramic cooktop**
- **Panasonic Dimension 4 microwave/Convection oven**
- **Tundra refrigerator/freezer**
- **Stainless sink with faucet**
- **Corian countertops**

Mechanical

- **Fully insulated engine room with Soundown foam noise barrier and painted white**
- **Twin 480hp Yanmar 6LY3-ETP Diesels with 640 hours**
- **Teleflex hydraulic steering system**
- **Teleflex electronic controls with synchronizer**
- **80amp, 12V Alternator on each engine**
- **Groco engine intake strainers with crash drains**
- **Seawater cooled exhaust system with in-line mufflers and side exhaust outlets**
- **PSS dripless shaft seals**
- **Manganese bronze struts with rubber cutlass bearings**
- **Racor fuel/water separators with water level alarms**
- **Reverso oil change system for engines, gears and generator**
- **Glendinning Cablemaster shore cable reel**
- **Bennett Trim Tabs**
- **(4) 2-1/2lb fire extinguishers**
- **Bonding system for protection against galvanic corrosion**
- **2" Aquamet 22 s/s shafts with spurs**

- (3) Rule 2000 (2000 gph), automatic 12-VDC bilge pumps
- 12-VDC hot and cold pressure water system
- 11 Gallon hot water heater
- Electric water tank level indicator
- Groco 2-way engine valve for emergency bilge pump
- 4-Blade Nibral propellers "computer" tuned to a ISO Class 1 rating
- Propeller shaft brushes
- Xintex Fireboy CG2-900 automatic fire extinguishing discharge system with dual override
- Engine room blower
- Automatic fire control system
- High water alarm
- Engine room lights 12V AD/DC
- 24,000 BTU Marine Air salon A/C
- Electric windshield opener
- Onan 11kw generator with 426 hours

Hull and Deck Features

- Sabre factory hardback enclosure
- General Hydraulics hydraulic swim platform
- Full exterior window sunscreens
- Ray Marine HD Digital dome antenna
- Helm area teak floor
- Entire boat polished and waxed (5-15)
- Fresh bottom paint and zincs (5-15)
- Fresh water washdown in anchor locker
- Windlass w/remote at helm

Salon and Staterooms

- Insignia LCD television in salon
- Panasonic BluRay/DVD player in salon
- Marine Air conditioning in MSR, salon and bridge deck
- Wet bar with Corian countertop and refrigerator on helm deck
- Twin Stidd chairs covered in Ultraleather Promessa Linen
- Bridge deck lounges covered in Ultraleather Promessa Linen
- Inlaid cocktail table with hi-lo feature at helmdeck lounge
- Twin Bomar hatches with shades and screens at helm

Exclusions

Owner's personal belongings.

Disclaimer

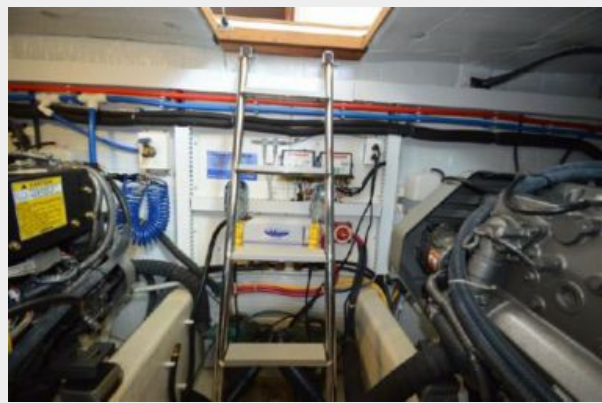
The Company offers the details of this vessel or yacht in good faith but cannot guarantee or warrant the accuracy of this information nor warrant the condition of the vessel. A buyer should instruct his representatives, agents, or his surveyors, to investigate such details as the buyer desires validated. This vessel or yacht is offered subject to prior sale, price change, or withdrawal without notice.

PHOTOS











CONTACTS

Andrey Shestakov, leading yacht broker of the sales department of Shestakov Yacht Sales Inc. Shestakov Yacht Sales Inc., the official representative of the Miami/Fort Lauderdale FL headquarters.

Contact details

Email: andrey@shestakovyachtsales.com

Web: shestakovyachtsales.com/en/

Telephones

USA: +1(954)274-4435

Office hours

Monday – Saturday: **9:00 - 21:00** EDT

Sunday: **closed**

Address



Harbour Towne Marina, 850 NE 3rd St,
STE 213, Dania, FL 33004