

## CHRISTINE — SABRE YACHTS



**Судостроитель:** [SABRE YACHTS](#)

**Год постройки:** 2007

**Модель:** Крейсер

**Цена:** ЦЕНА ЯХТЫ ПО ЗАПРОСУ

**Местонахождение:** United States

**Длина общая:** 42' 3" (12.88m)

**Ширина:** 14' 4" (4.37m)

**Макс. осадка:** 3' 9" (1.14m)

Купить **Christine — SABRE YACHTS** а также выбрать подходящую вам яхту из нашего каталога яхт вам поможет опытный яхтенный брокер Андрей Шестаков. На сегодняшний день компания **Shestakov Yacht Sales Inc.** имеет большое количество яхт в собственном списке продаж, а также тесно сотрудничает со всеми крупными яхтенными производителями по всему миру.

Для того чтобы купить яхту **Christine — SABRE YACHTS** а также проконсультироваться по любому вопросу связанному с покупкой, продажей, чартером яхт позвоните по телефону **+7(918)465-66-44**.

# ОГЛАВЛЕНИЕ

---

ОГЛАВЛЕНИЕ	2
ХАРАКТЕРИСТИКИ	3
Обзор	3
Основная информация	3
Размеры	3
Скорость, вместимость и масса	3
Размещение	3
Корпус и палуба	3
Информация о двигателе	4
ПОДРОБНОЕ ОПИСАНИЕ	5
Layout	5
Inside Equipment	5
Outside Equipment	5
Electronics	6
Galley	6
Mechanical	6
Hull and Deck Features	7
Salon and Staterooms	7
Исключения	8
Отказ от ответственности	8
ФОТОГРАФИИ	9
КОНТАКТЫ	14
Контактная информация	14
Телефоны	14
Время работы	14
Адрес	14

# ХАРАКТЕРИСТИКИ

## Обзор

This meticulously maintained 42 Sabre features the factory hardback enclosure, General Hydraulics swim platform with remote, twin Yanmar 480hp electronic engines with 610 hours, Raymarine E120 plotters, radar, depthfinder and autopilot, ultraleather in the salon, bow thruster and the list goes on and on. Complete records from 2011 on, from an open checkbook owner. She will not disappoint!

## Основная информация

Тип судна: Крейсер

Модельный год: 2007

Год постройки: 2007

Страна: United States

## Размеры

Длина общая: 42' 3" (12.88m)

Ширина: 14' 4" (4.37m)

Макс. осадка: 3' 9" (1.14m)

Трапы: 14' 1" (4.29m)

## Скорость, вместимость и масса

Водоизмещение: 29000 Pounds

Вместимость воды: 160 Gallons

Вместимость сточного бака: 60 Gallons

Объем топливного бака: 450 Gallons

## Размещение

Всего кают: 2

Всего ком. состава: 1

## Корпус и палуба

Материал корпуса: Fiberglass

## Информация о двигателе

---

**Двигатели:** 2

**Производитель:** Yanmar

**Модель:** 6LY3ETP

**Тип двигателя:** Inboard

**Тип топлива:** Diesel

---

# ПОДРОБНОЕ ОПИСАНИЕ

---

## Layout

---

This layout sleeps four owners/guests in two double staterooms plus the salon settee is sized to be another comfortable berth if you should need it. The forward master stateroom features a centerline island berth with 4 large drawers at the foot of the berth. There are storage cabinets outboard and above the berth, to port is a chest of drawers, to starboard is a cedar-lined hanging locker. Continuing aft to starboard there is a private access door to the head, which features a vanity/sink with a Corian counter top, cherry trimmed adjustable mirror and a clear Plexiglass circular shower stall. There is a wet locker outboard of the shower, which also has a built in seat and teak grate. The spacious main salon displays the fine craftsmanship that is found throughout the boat and is highlighted by a satin-varnished cherry interior woodwork and a teak and holly sole. Featuring a L-shaped Ultrasuede settee (with storage outboard and below), with a beautifully finished inlaid bird's eye maple adjustable table. Across from the settee is a bulkhead mounted flat screen TV and entertainment system. The fully equipped galley is aft to port boasts a Tundra fridge/freezer, ceramic cook top, and microwave oven, as well as abundant storage and Corian counter tops. The guest stateroom is opposite the galley and offers a convertible double berth, chest of drawers, and lockers under and outboard of the berth. The fully enclosed and climate controlled helm deck offers excellent 360 degree views that will be appreciated underway as well as when anchored or docked. The helm is to starboard and features a full Raymarine Electronics package and excellent visibility which will be appreciated by the helmsman. A Stidd chair is found forward at the helm, with a single Stidd chair to the port side. There is an L-shaped Ultraleather settee with inlaid table aft to port, and to starboard you will find a wet bar with a Corian counter top, Tundra refrigerator and a single bench seat. The cockpit is both spacious and functional. There is a double bench seat to port and a single opposite, separated by the companionway that leads up to the helm deck. The full beam lazarette offers a tremendous amount of storage and is accessed via 3 deck hatches. A walk-thru transom door leads out to the hydraulic swim platform. The wide side decks and large diameter stainless steel hand rails along with a raised teak toe rail make moving around the deck both secure. The teak toe rail, as well as the rest of the vessel, is kept in Bristol fashion.

## Inside Equipment

---

Refrigerator Deep freezer - in galley floor Battery charger - Xantrax 60 amp

## Outside Equipment

---

Electric windlass

---

## Electronics

---

- **Dual E 1200 Ray Marine Touch Screen GPS, Radar, Sonar Monitors**
- **Ray Marine Smartpilot Autopilot**
- **Ray Marine Tridata speed, depth, log**
- **Ray Marine SeaTalk system VHF**
- **Ritchie Powerdamp compass**
- **Bennett trim tab controls with electronic gauges**
- **Imtra bow thruster**
- **3 ea. windshield wiper controls**
- **Engine instrument gauges**
- **Electronic engine controls with engine synchronizers**

---

## Galley

---

- **Princess Gourmet 2 burner ceramic cooktop**
- **Panasonic Dimension 4 microwave/Convection oven**
- **Tundra refrigerator/freezer**
- **Stainless sink with faucet**
- **Corian countertops**

---

## Mechanical

---

- **Fully insulated engine room with Soundown foam noise barrier and painted white**
- **Twin 480hp Yanmar 6LY3-ETP Diesels with 640 hours**
- **Teleflex hydraulic steering system**
- **Teleflex electronic controls with synchronizer**
- **80amp, 12V Alternator on each engine**
- **Groco engine intake strainers with crash drains**
- **Seawater cooled exhaust system with in-line mufflers and side exhaust outlets**
- **PSS dripless shaft seals**
- **Manganese bronze struts with rubber cutlass bearings**
- **Racor fuel/water separators with water level alarms**
- **Reverso oil change system for engines, gears and generator**
- **Glendinning Cablemaster shore cable reel**
- **Bennett Trim Tabs**
- **(4) 2-1/2lb fire extinguishers**
- **Bonding system for protection against galvanic corrosion**
- **2" Aquamet 22 s/s shafts with spurs**

- (3) Rule 2000 (2000 gph), automatic 12-VDC bilge pumps
- 12-VDC hot and cold pressure water system
- 11 Gallon hot water heater
- Electric water tank level indicator
- Groco 2-way engine valve for emergency bilge pump
- 4-Blade Nibral propellers "computer" tuned to a ISO Class 1 rating
- Propeller shaft brushes
- Xintex Fireboy CG2-900 automatic fire extinguishing discharge system with dual override
- Engine room blower
- Automatic fire control system
- High water alarm
- Engine room lights 12V AD/DC
- 24,000 BTU Marine Air salon A/C
- Electric windshield opener
- Onan 11kw generator with 426 hours

---

## Hull and Deck Features

---

- Sabre factory hardback enclosure
- General Hydraulics hydraulic swim platform
- Full exterior window sunscreens
- Ray Marine HD Digital dome antenna
- Helm area teak floor
- Entire boat polished and waxed (5-15)
- Fresh bottom paint and zincs (5-15)
- Fresh water washdown in anchor locker
- Windlass w/remote at helm

---

## Salon and Staterooms

---

- Insignia LCD television in salon
- Panasonic BluRay/DVD player in salon
- Marine Air conditioning in MSR, salon and bridge deck
- Wet bar with Corian countertop and refrigerator on helm deck
- Twin Stidd chairs covered in Ultraleather Promessa Linen
- Bridge deck lounges covered in Ultraleather Promessa Linen
- Inlaid cocktail table with hi-lo feature at helmdeck lounge
- Twin Bomar hatches with shades and screens at helm

## Исключения

---

При продаже яхты исключаются личные вещи владельца.

## Отказ от ответственности

---

Компания предоставляет описание судна или яхты добросовестно, но не может гарантировать точность этой информации, а также не ручается за техническое состояние. Покупатель должен проинструктировать своих агентов или оценщиков исследовать представленную информацию более подробно, по собственному желанию. Продажа судна или яхты, изменение цены или снятие с продажи будет происходить без предварительного уведомления.



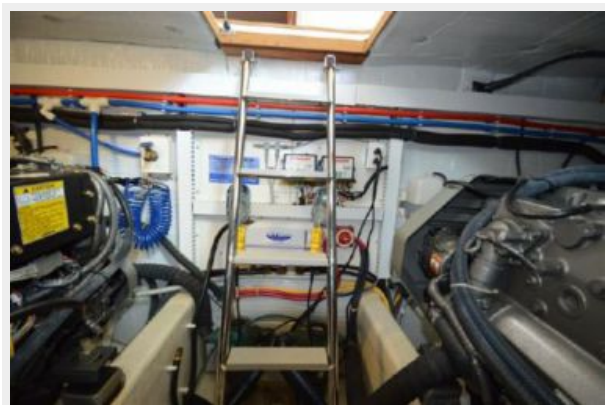
# ФОТОГРАФИИ















# КОНТАКТЫ

---

Андрей Шестаков (Andrey Shestakov) – ведущий яхтенный брокер отдела продаж яхт и судов компании Shestakov Yacht Sales Inc. Официальный представитель Shestakov Yacht Sales Inc. для русскоговорящих клиентов в центральном офисе компании в Майами/Форт Лодердейл/Флорида/США.

## Контактная информация

---

Email: [andrey@shestakovyachtsales.com](mailto:andrey@shestakovyachtsales.com)

Web: [shestakovyachtsales.com](http://shestakovyachtsales.com)

## Телефоны

---

Краснодарский край: **+7(918)465-66-44**

США, Майами, Флорида: **+1(954)274-4435**

## Время работы

---

Понедельник – Суббота: **9:00 - 21:00**  
EDT

Воскресенье: **Закрито**

## Адрес

---



Harbour Towne Marina, 850 NE 3rd St,  
STE 213, Dania, FL 33004