

MR. VICTOR — VIKING



Судостроитель: VIKING

Год постройки: 2002

Модель: Катер для спортивной рыбалки

Цена: ЦЕНА ЯХТЫ ПО ЗАПРОСУ

Местонахождение: United States

Длина общая: 61' 0" (18.59m)

Ширина: 18' 2" (5.54m)

Макс. осадка: 5' 4" (1.63m)

Купить **Mr. Victor — VIKING** а также выбрать подходящую вам яхту из нашего каталога яхт вам поможет опытный яхтенный брокер Андрей Шестаков. На сегодняшний день компания **Shestakov Yacht Sales Inc.** имеет большое количество яхт в собственном списке продаж, а также тесно сотрудничает со всеми крупными яхтенными производителями по всему миру.

Для того чтобы купить яхту **Mr. Victor — VIKING** а также проконсультироваться по любому вопросу связанному с покупкой, продажей, чартером яхт позвоните по телефону **+7(918)465-66-44**.

ОГЛАВЛЕНИЕ

ОГЛАВЛЕНИЕ	2
ХАРАКТЕРИСТИКИ	5
Основная информация	5
Размеры	5
Скорость, вместимость и масса	5
Размещение	5
Корпус и палуба	5
Информация о двигателе	5
ПОДРОБНОЕ ОПИСАНИЕ	6
Overview	6
Salon	6
Galley	6
Dinette	6
Master Stateroom	6
Master Head	7
Forward Stateroom	7
Forward Stateroom Head	7
Guest Stateroom-Starboard	7
Guest Head-Starboard	7
Companionway	7
Flybridge	8
Electronics	8
Tuna Tower	8
Tower Electronics	8
Cockpit	9
Deck Equipment	9
Engine and Mechanical	9
Remarks	9

Exclusions	9
Исключения	9
Отказ от ответственности	10
ФОТОГРАФИИ	11
Salon	11
Salon	11
Salon	11
Salon	11
Dinette	11
Salon	11
Galley	12
Galley	12
Master Stateroom	12
Master Stateroom	12
Master Head	12
Master Stateroom	12
Forward VIP Stateroom	13
Guest Head	13
Guest Stateroom	13
Guest Head	13
Washer/Dryer	14
Flybridge	14
Flybridge	14
Flybridge	14
Tower	15
Teaser Reels	15
Electronics	15
Electronics	15
Pop Up Engine Displays	15

Flybridge Electronics Port	15
Cockpit	16
Flybridge Freezer	16
Cockpit Ice Bin	16
Cockpit	16
Freezer Live Well	16
Cockpit	16
Cockpit	17
Cockpit	17
Engine Room	17
Engine Room	17
Engine Room	17
Engine Room	17
Engine Room	18
КОНТАКТЫ	19
Контактная информация	19
Телефоны	19
Время работы	19
Адрес	19

ХАРАКТЕРИСТИКИ

Основная информация

Тип судна: Катер для спортивной рыбалки

Модельный год: 2003

Год постройки: 2002

Страна: United States

Открытая палуба мостика: Да

Размеры

Длина общая: 61' 0" (18.59m)

Ширина: 18' 2" (5.54m)

Макс. осадка: 5' 4" (1.63m)

Скорость, вместимость и масса

Вместимость воды: 310 Gallons

Объем топливного бака: 2050 Gallons

Размещение

Всего кают: 3

Корпус и палуба

Материал корпуса: Fiberglass

Информация о двигателе

Производитель: MTU

Модель: Series 2000

Тип двигателя: Inboard

Тип топлива: Diesel

ПОДРОБНОЕ ОПИСАНИЕ

Overview

Mr. Victor was built by her original owner to be one of the most custom 61 Vikings ever. Her speed and equipment rivals today's latest projects. Her interior is finished in earth tones for a clean, warm, high quality feel of natural stone and timber. Every option is perfectly in place catering to your desires. The details to follow illustrate her quality and equipment that make Mr. Victor a one of a kind, timeless fishing machine.

Salon

•Premier edition decor (British Colonies) •Control 4 TV remote system with I-Phone monitor •Pop up 42" Samsung LED smart TV •Sony/Samsung/Luxul/custom 12/V system •Genaire automatic salon door system •Quartz light dimmers throughout •Custom fabric on valances - leather and wicker rope weave •U-shaped sofa, Genuine leather custom style with storage •Ottoman, Genuine leather with storage •Custom headliner material (Vista Aspen) throughout vessel •Solid Teak flooring with hand matched grain though out every interior floor by American Custom Yacht •ICOM 802 SSB/ICOM 602 VHF w/smart mics •Electrical panel up in side credenza •Wine and bottle storage in wider cabinet below electric panel •Teak face on aft side of galley island and dinette •Kenmore clear ice maker in credenza •LED salon lighting w/remote control with full spectrum color control

Galley

•Granite counter tops, Himalayan gold with 5" back splash •Refrigerators (2) and freezer with drawers (1) •Dishwasher •Grohe brushed nickle faucet •Stainless steel sink, undermount •4-Burner range flush mounted •Conventional Gagginau oven •Convection microwave oven •Chrome instant hot water •Deep storage cabinets overhead with pull out drawers

Dinette

•Table, teak with teak pedestal •Genuine leather dinette with storage

Master Stateroom

•Samsung 46" smart LED TV •Control4 control system television interfaced to audio visual surround sound tied into navigation & cameras. •Sony tuner with DVD & VHS •Custom wallpaper bamboo camel •Custom mattress upgraded •End tables with teak tops •Entry credenza with teak top •Dimmer on overhead LED lights •His & her closets aft cedar lined •Queen bed with storage and safe •Entry credenza with four drawers and teak top •Custom Teak flooring including closets

- Dimmers on overhead halogen lights
- Gun safe in credenza

Master Head

- Custom wallpaper
- One piece, custom frameless shower door
- Teak face on lower vanity
- Vanity surface Ubatuba granite
- Chrome and brass faucet
- Chrome shower fixtures
- Flooring, Ubatuba granite
- Headhunter head system
- LED lighting

Forward Stateroom

- 31" Sharp LED TV
- Control 4 remote
- RCA DSS receiver w/ RF remote
- Linn A/V receiver/DVD
- Custom wallpaper
- Custom mattress upgraded
- Teak face on lower vanity
- Custom Cabinet unit for lower bunk on port side
- VIP cross over layout
- Teak bulk head forward
- Custom teak flooring
- Custom wall paper rush cloth red
- Cedar lined hanging locker
- LED lighting

Forward Stateroom Head

- Custom wallpaper
- Chrome and brass faucet
- Chrome shower fixtures
- Chrome shower door
- Vanity surface, Ubatuba granite
- Flooring, Ubatuba granite
- Head hunter head
- Teak face on lower vanity
- LED lighting

Guest Stateroom-Starboard

- Over under bunks with private access to third head
- Two Samsung 26" LED televisions for each over under bunk
- Control4 control unit for AV interface
- Custom wallpaper rush cloth red
- Custom mattress upgraded
- Washer/Dryer stack unit in stateroom
- Dimmer on overhead halogen light
- Custom teak flooring
- Crestron AV system
- LED lighting

Guest Head-Starboard

- Headhunter head system
- Ubatuba granite flooring and vanity
- Separate stall shower
- Chrome and brass faucet
- Chrome shower hardware
- Chrome shower door
- Custom wallpaper
- LED lighting

Companionway

- Custom teak flooring
- Leather wall covering
- Central VAC system
- Bilge/storage access
- LED lighting

Flybridge

•Custom pop up DDEC engine gauges in console •DDEC trolling valves •DDEC single lever controls for pod w/recessed bow thruster controls •Custom helm pod •Recessed electronics boxes •Storage freezer top loading in front of consol •Stainless steel gas springs on bench seats •Drip dry foam for cushions-all new 2013 •Buell horns, powder coated •Dual thermostat for chill box •Dual thermostat for storage •Teak Release helm chairs with teak foot rest-new cushions 2013 •Spray curtain for console •Bridge installed without exposed fasteners •Aux A/C ducting •(3) Sided MacRelon enclosure 2013 •Lifesling

Electronics

Incredibly easy to use electronics system with over \$250,000.00 invested •2 x ICOM 604 VHF - bridge •ICOM M710RT-22 - single side band •ICOM RC21 SSB remote head units salon & bridge •ICOM 602 - tower •Telular cell phone system •Digital 4' cell antenna •Intellian S6HD KVH SAT television 4ea RCA receivers •Tracphone 252 SAT phone •Fusion A/V 700i bridge stereo with Alpine 2 channel amp, 4ea. Flybridge speakers & 1ea 10" subwoofer •Four pair MB quartz cockpit speakers with 2 ea. Kicker 10" subwoofers under cockpit sole. •Furuno radar, 25 kW, 6.5' array - on bridge •Furuno ARP26, 40 target auto plotter •Furuno FCV1200BB sounder - on bridge •Furuno CA28F-8, 28KHz xducer, 1 kw •Furuno CA2008-8B, 200 KHz xducer, 2kW •Garmin 8212 GPS (2014) •Weatherworks XM weather sytem •Nauticomp Explorer plotter •Nauticomp columbus computer processor •Nobeltech Admiral plotter •3X Nauticomp 15" sunlight screen-updated 2014 •Garmin autopilot •ACR Search light •GPIRB, Northern Airborne •CSI Bullet 2mm lens camera - engine room •Extron video switching system •Yacht Controller remote docking controlled system •Garmin camera system in cockpit/engine room/bridge •FLIR system •Control 4 A/V remote

Tuna Tower

•Full Tuna Tower by Baush American with all molded tops and standing platform. •Molded navigation lights in hardtop •Tower sunshade molded •Tower consol pod style with single lever controls and storage. •Tower fresh water wash down on standing platform •110 volt spreader lights, two aft & one forward-LED 214 •Over head LED lights on bridge •Over head teaser reels Miya Epoch US-9 •Rod holders on tower legs port & starboard 3 each side •Rod holders on aft flybridge rail 8 ea. •Rupp triple spreader outriggers with upgraded heavy back bar for dredge fishing •Center outrigger •Padded seat and backrest •All antennae's awlgripped to match hull

Tower Electronics

•Tower Nauticomp 10.4" screen sunlight viewable •Tower Control 4 remote panel •Tower Garmin autopilot repeater •Tower speakers 2ea.under control box •Tower engine start/stops •Tower trim tab switch & horn •Tower compass •LED spreader lights

Cockpit

•Teak deck and salon entry (2013) (1/2") •Livewell dual 24 Volt systems for deck tubs port & starboard •Livewell in cockpit sole/livewell in transom with window and LED light •Fishbox dividers in fishbox •Fresh and salt water washdown with Y valve •Dual thermostat for refrigerated step box •Dual thermostat for cockpit freezer as well as factory plumbed to be a live bait well. •Stainless steel gas springs on fishbox lids, sole boxes and lazarette lid •Transom coaming solid with fish door •Circulation haunch blowers from A/C •Custom cushions for freezer/tackle center •Engine room door lock •Tackle drawers •8 ea. rod holders in gunwales •Release full size fighting chair with offset pedestal and back rest. •Six Rod Rocket launcher option in lieu of back rest. •Six rod rocket launcher straight pedestal mount. •Eskimo Ice 600 lb. per day with dump to fish box and usual cockpit sole tub •Glendinning cable master for 50 amp shore cord

Deck Equipment

•Quicklift davit (1600 lbs) new 2013 •Adjustable bow chocks for dinghy or jet ski's •200' chain •Polished stainless Detla anchor •Custom stainless steel anchor chute with Lewmar windlass

Engine and Mechanical

•Upgraded MTU series 2000 V16 2000 hp each engine •Two 21.5 kW generators with powder coated shelves over both units. •DC bow thruster with aft edge faired •Engine room Awlgrippped - Snow White •Awlgrippped brass thru hulls and sea strainers in engine room and forward bilge and anchor locker •Awlgrippped lazarette •Generator gas water separator on generator exhaust •Dual power steering pumps •Back up fuel transfer pump in parallel •Headhunter fresh water pump •Headhunter system •Generator gauge panel for both generators, custom mount •Additional fuel tank - for a total of 3 tanks •Oval exhaust outlets •Fiberglass side thru hulls •Prop pockets •Circulation blowers •Reverse osmosis watermaker 1200 gpd

Remarks

Mr. Victor has been built with the fiberglass toe rail deleted for the option to add a teak toe rail. Also, the transom has squared off corners for the addition on a teak transom.

Exclusions

Tender is not included

Исключения

При продаже яхты исключаются личные вещи владельца.

Отказ от ответственности

Компания предоставляет описание судна или яхты добросовестно, но не может гарантировать точность этой информации, а также не ручается за техническое состояние. Покупатель должен проинструктировать своих агентов или оценщиков исследовать представленную информацию более подробно, по собственному желанию. Продажа судна или яхты, изменение цены или снятие с продажи будет происходить без предварительного уведомления.

ФОТОГРАФИИ

Salon



Salon



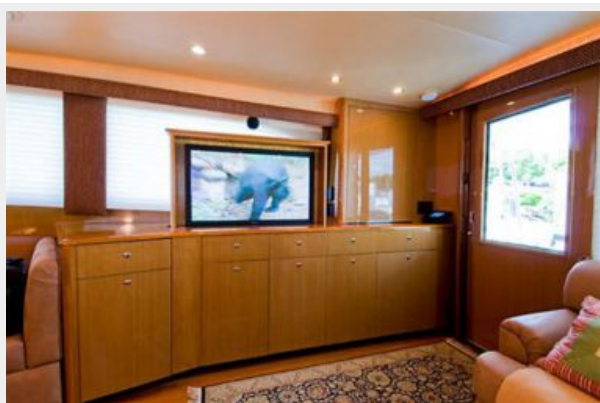
Salon



Salon



Salon



Dinette



Galley



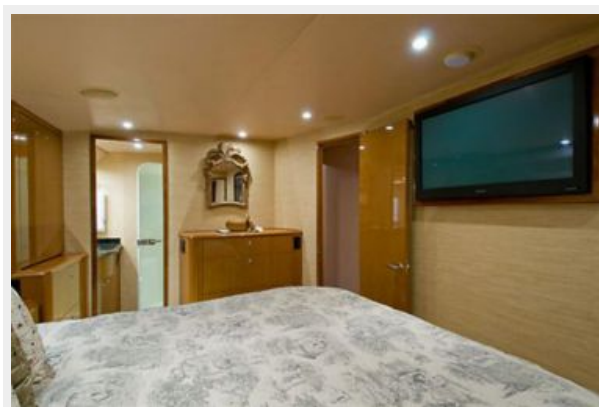
Galley



Master Stateroom



Master Stateroom



Master Stateroom



Master Head



Forward VIP Stateroom



Guest Head



Guest Stateroom



Guest Head



Washer/Dryer



Flybridge



Flybridge



Flybridge



Tower



Teaser Reels



Electronics



Electronics



Pop Up Engine Displays



Flybridge Electronics Port



Flybridge Freezer



Cockpit



Cockpit



Cockpit Ice Bin



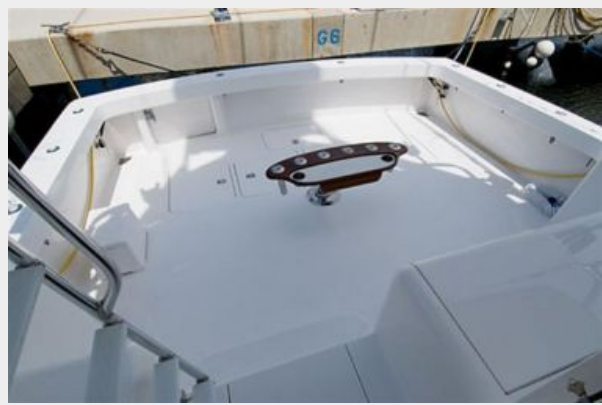
Freezer Live Well



Cockpit



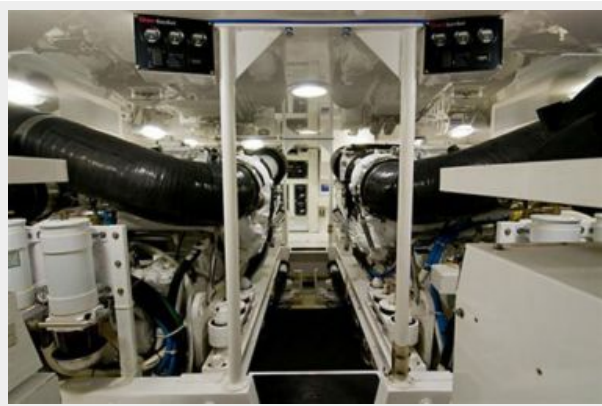
Cockpit



Cockpit



Engine Room



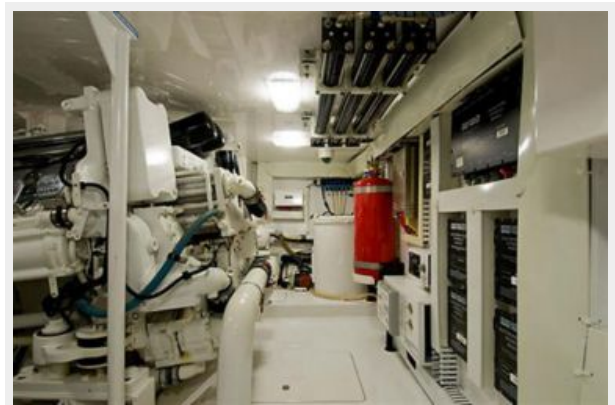
Engine Room



Engine Room



Engine Room



Engine Room



КОНТАКТЫ

Андрей Шестаков (Andrey Shestakov) – ведущий яхтенный брокер отдела продаж яхт и судов компании Shestakov Yacht Sales Inc. Официальный представитель Shestakov Yacht Sales Inc. для русскоговорящих клиентов в центральном офисе компании в Майами/Форт Лодердейл/Флорида/США.

Контактная информация

Email: andrey@shestakovyachtsales.com

Web: shestakovyachtsales.com

Телефоны

Краснодарский край: **+7(918)465-66-44**

США, Майами, Флорида: **+1(954)274-4435**

Время работы

Понедельник – Суббота: **9:00 - 21:00**
EDT

Воскресенье: **Закрито**

Адрес



Harbour Towne Marina, 850 NE 3rd St,
STE 213, Dania, FL 33004