

SOUND VIEW — PERSHING



Builder: PERSHING

Year Built: 2013

Model: Motor Yacht

Price: PRICE ON APPLICATION

Location: United States

LOA: 64' 0" (19.51m)

Beam: 16' 5" (5.00m)

Max Draft: 4' 4" (1.32m)

Cruise Speed: 42 Kts. (48 MPH)

Max Speed: 47 Kts. (54 MPH)

Our experienced yacht broker, Andrey Shestakov, will help you choose and buy a yacht that best suits your needs **Sound View — PERSHING** from our catalogue. Presently, at Shestakov Yacht Sales Inc., we have a wide variety of yachts available on our sale's list. We also work in close contact with all the big yacht manufacturers from all over the world.

If you would like to buy a yacht **Sound View — PERSHING** or would like help answering any questions concerning purchasing, selling or chartering a yacht, please call **+1(954)274-4435**

TABLE OF CONTENTS

TABLE OF CONTENTS	2
SPECIFICATIONS	3
Basic Information	3
Dimensions	3
Speed, Capacities and Weight	3
Accommodations	3
Hull and Deck Information	3
Engine Information	4
DETAILED INFORMATION	5
Vessel Description	5
Exclusions	11
Disclaimer	11
PHOTOS	12
CONTACTS	22
Contact details	22
Telephones	22
Office hours	22
Address	22

SPECIFICATIONS

Basic Information

Category: Motor Yacht

Model Year: 2013

Year Built: 2013

Country: United States

Vessel Top: Hardtop

Dimensions

LOA: 64' 0" (19.51m)

Beam: 16' 5" (5.00m)

Max Draft: 4' 4" (1.32m)

Speed, Capacities and Weight

Cruise Speed: 42 Kts. (48 MPH)

Max Speed: 47 Kts. (54 MPH)

Water Capacity: 238 Gallons

Fuel Capacity: 925 Gallons

Accommodations

Total Cabins: 3

Sleeps: 6

Total Heads: 3

Crew Cabin: 1

Hull and Deck Information

Hull Material: Fiberglass

Engine Information

Engines: 2

Manufacturer: MTU

Model: 10V 2000 M94

Engine Type: Inboard

Fuel Type: Diesel

DETAILED INFORMATION

Vessel Description

The Sound View is a 2013 64 Pershing painted in Pearlescent White built by an experienced repeat Pershing owner. The most successful model in Pershing's history, the Pershing 64 is built for the discriminating performance oriented yachtsman who demands only the very best. Sound View is offered in Bristol condition by a demanding owner with a fastidious captain. She is the only 64 Pershing available with twin navigational touch screens at the helm, a backup generator, and a water maker. Sound View's electronics are comprehensive and state of the art and include satellite TV and phone, Wifi throughout the vessel, and Flir night vision.

The spectacular white pearlescent paint helps Sound View stand out in any harbor worldwide. Decorated by noted Fort Lauderdale Interior Design Firm, A La Mer, the interior decor of the yacht is spectacular and offers many custom touches. The fastidious captain has maintained Sound View with an open checkbook for a meticulous owner with a keen eye for detail. Sound View will pass the most rigorous survey.

This Pershing is being offered by a market aware seller with extended MTU engine warranties to 1,000 hours with the option to extend the engine warranties to 2,000 hours. Also included in the sale is a highly customized \$50,000.00 13ft Aquascan jet tender, that is housed in the yacht's transom garage.

Pershings are the only yachts in the world that perfectly marry exquisite yacht quality, style, spacious and comfortable accommodations all in a bullet proof Rina Class A hull that weighs 90,000 pounds yet is capable of running all day long at 40 knots!

Sound View represents the best value on the Pershing Brokerage Market Today.

Interior Compartments

· Master Bathroom · Crew Bathroom · Guest Bathroom · VIP Bathroom ·
Galley · Bow Locker · Chain Locker · Engine Room · Upper Saloon/ Helm Station

Construction Materials for Interior

· Bed Cover, Pillows, and Mattresses · Chrome Accessories in Bathrooms · Chrome Door Stops for Interiors · Chrome Faucets · Cream Colored Carpet in the Night Area · Crew Bathroom Ivory Lacquered Door with Glass · Electric WC in Ceramic in All Bathrooms · Galley Top in Covered Glass · Inside of Furniture in Crew Quarter Laminated/ Upholstered in Vinyl Fabric · Inside of Furniture Laminated/ Upholstered in Vinyl Fabric · Interior Doors with Unsealed Oak Veneer · Interior Fittings in Glazed/Chrome Metal · LED Lights in Cabins and Cockpit · Main Structural Bulkheads in Laminated Vacuum Sandwich · Manual Rolls Curtains in Fabrics in Saloon and in all cabins · Manual Venetian Blinds in Ivory Aluminum in the Bathrooms · Master Bathroom Basins in Natural Acrylic Stone ·

Multilayer Walls and Divisions in "Okume" · Opening Portholes in Stainless Steel with Mechanical Hook · Reading Lights in the Cabins · Soft Touch Switch Plates and Sockets · Space Behind the Curtains Covered In Laminated and Vinyl Fabric · Structural Sandwich GRP Floors · VIP and Guest Bathroom Basins in Ceramic · Washbasin Unit Top in Crew Bathroom in GRP Ivory Color

Deck Equipment · Aft Garage for Tender (Tender Optional) · Antenna Empty Dome for Symmetry · Antenna TV Sat (American Version) · Anitfouling · Black Water Pump Out Cap · Capstan 1500 W With Foot Control · Dome · External Shower · Fairlead (2) in Stainless Steel · Fore Storage with Doors and Chain Peek · Fresh Water Filling Cap · Fuel Filling Cap · Galvanized Anchor with Join (1 X 30 KG) · Galvanized Chain 75 MT 10MM · GPS Antenna · Hideaway Aft Sliding Door in Black Painted Aluminum and Tempered Glass · Hinged Circular Hatchway in Stainless Steel and Crystal Glass with Handle · Horn · Hydraulic Hideaway Swim Ladder in Bathing Platform · Navigation Lights · Radar Antenna Open Array · Side Pershing Logo (2) in Silicon · Side Windows in Monolithic Tempered Crystal · Side Windows with Electric Mechanism · Signal Mast in Stainless Steel · Stainless Steel Aft Handrail Ø 30 MM · Stainless Steel Gate (2) for Cockpit Entry · Stainless Steel Mooring Cleat: At Bow (2), at Midship (2), At Stern (2) · Stainless Steel Railing · Swimming Platform and Aft Steps in Teak · Telescopic Hydraulic Hideaway Gangway, with Remote Control · VHF Antenna (2) · Windlass 2300 W With Waterproof Control Pad Windshield in Transparent Tempered Glass · Windshield Wiper/Washer (2)

Cockpit/Outside Aft Dinette

· Access to Crew Quarter Through Aluminum Ladder · Access to Engine Room Through Aluminum Ladder · Barbeque 60HZ · Ceiling Lights (7) · Courtesy Lights for Steps (12) · GRP Furniture Port Side with Sink · GRP Sofa with Seat and Backrest in White Vinyl Fabric · Hideaway Sliding Hard Top Portion · Natural Teak Height-Adjustable Folding Table · Sun Pad with Seat Upholstered in White Vinyl Fabric · Waterproof Speakers (2) with Independent Volume Control · Aft Camera · Cockpit Speakers · CD Player · Radio · DVD Player · VCR · TV Set

Helm Station

· Aluminum Panels with Carbon Fibre Finishing · Autopilot · Chart-Plotter/Radar (Maps Not Included) · Digital Touch Screen with Trim Tabs Angle, Trim Angle, Rudder Angle, Water and Fuel Levels Indicators · Electronic Digital LCD Engine Control Panel (2) · Electronic Levers for Engine Controls · Engine and Navigation Control Instruments: · Bow Thruster Joystick · Compass · SR Trim Joystick · Trim Tabs Joystick · Helm Wheel Upholstered in Poltrona Frau Leather · Instrument Dashboard in ABS Upholstered in Poltrona Frau Leather · Pilot Seat in Poltrona Frau Leather · Sliding Seat Helm Station · Radio VHF · Socket 12 (Cigarette Lighter Type)

Upper Salon

· Access to the Galley Through a GRP Stairway with Wenge Steps · Access to the Night Area Through a Stairway with Wenge Steps with Courtesy Lights · Audio-Video System: · Docking for iPod · Hi-Fi System · LED TV 32" on Furniture · Ceiling Covered in Poltrona Frau Leather · Ceiling Lights (11) · Ceramic Set for 6 People · Cutlery Set for 6 People · Digital Control Panel for A/C System · Folding Chairs (4) in Poltrona Frau Leather · Fridge 60HZ · Glass Set for 6 People · Ice Maker 60HZ · Light Switches · Lighting Stripe Under Windshield Carter · Natural Teak Holder for Glasses and Plates · Poltrona Frau Chaise Lounge in Leather · Poltrona Frau Sofa in Leather · Sliding Hard Top Portion · Structural GRP Floor Covered in Wenge · TV SAT Receiver HD · Oak Wood Furniture with Opening Doors and Shelves · Up & Down Dining Table in Unsealed Oak Wood

Corridor for Access to Night Area

· Ceiling Lights (3) · Light Switches · Paneled Ceiling Covered in Vinyl Fabric · Structural GRP Floor Covered in Carpet with Wenge Frame · Walls with Frames Covered in Unsealed Oak Wood

Master Cabin

· Audio-Video System: · Docking for iPod · Hi-Fi System · LED TV 26" · Beauty Unit with Mirror and Under Top Compartment and Opening Doors · Built in Ceiling Spotlight (9) · Ceiling Covered in Vinyl Fabric with Lacquered Frame · Digital Control Panel for A/C System · Double Bed in Unsealed Oak Wood with Headboarder in Poltrona Frau Leather and Locker · Fixed Side Windows (2) in Stratified Crystal · Fridge · Light Switches · Lighting Stripe Underneath the Bed · Locker in Unsealed Oak with Clothes Rack, Internal Light, and Mirror · Mirror at Aft Bulkhead Above Bed · Opening Portholes in Stainless Steel with Mechanical Hook (2) · Ottoman Upholstered in Poltrona Frau Leather · Poltrona Frau Leather Chaise Lounge · Reading Light (2) · Safe · Structural GRP Floor Covered in Carpet · Unsealed Oak and Wenge Wood Nightstand (2) with Drawers · Unsealed Oak Wood Dresser · Walls with Frames Covered in Unsealed Oak Wood

Master Bathroom

· A/C System Outlet · Built in Ceiling Spotlight (4) · Clothes Hook (2) · Combined Washbasin Faucet (2) · Electric WC in Ceramic · Hanging Lockers in Oak Wood, with Doors, Mirror, and Internal Shelves · Lacquered Ceiling · Light Switches · Matte Polished Wenge Floor · Mosaic Shower Plate · Opening Portholes in Stainless Steel with Mechanical Hook (2) · Shampoo Holder in Shower Holder in Shower · Shower Box Covered in Mosaic with Tempered Glass Door · Shower Faucet with Double Outlets with Deviator · Showerhead on the Ceiling · Toilet Brush Holder · Towel Rack · Wash Basin in Natural Acrylic Stone · Wash Basin Unit in Oak with Opening Doors

VIP Cabin

- Audio-Video System: · Docking Station for Mini Hi-Fi · Loud Speakers (2) · Mini Hi-Fi CD/DVD · Blinders for Hatchway · Ceiling Lights (7) · Ceiling Panels Covered with Vinyl Fabric and Lacquered Frame · Digital Control Panel for A/C System · Double Bed in Unsealed Oak Wood with Headboard Upholstered in Poltrona Frau Leather and Drawers Underneath · Emergency Exit to Upper Deck from Circular Hatchway and Ladder
- Light Switches · Locker in Oak Wood (2) with Clothes Rack and Internal Light · Mirror at Fore Bulkhead · Opening Portholes in Stainless Steel with Mechanical Hook (2)
- Reading Lights (2) · Structural GRP Floor Covered in Carpet · Unsealed Oak Wood Nightstand (2) · Walls Covered in Oak Wood

VIP Bathroom

- A/C System Outlet · Built in Ceiling Spotlights (4) · Clothes Hook (2) · Combined Washbasin Faucet · Electric WC in Ceramic · Lacquered Ceiling · Light Switches
- Matte Polished Wenge Floor · Mirror · Opening Portholes in Stainless Steel with Mechanical Hook · Shower Box Covered in STD Laminate with Tempered Glass Door · Shower Faucet with Double Outlets with Deviator · Showerhead on the Ceiling · Toilet Brush Holder · Toilet Roll Holder · Towel Rack · Walls Covered in Laminate · Wash Basin Unit in Unsealed Oak Wood with Opening Doors · Wenge Floor

Guest Cabin

- Audio-Video System: · Loudspeakers (2) · Mini Hi-Fi CD · Docking Station for Mini Hi-Fi · Ceiling Covered in Vinyl Fabric with Lacquered Frame · Ceiling Lights (6)
- Digital Control Panel for A/C System · Light Switches · Locker in Unsealed Oak Wood with Clothes Rack, Internal Light, and Mirror · Mirror at Aft Bulkhead · Opening Portholes in Stainless Steel with Mechanical Hook (2) · Reading Lights (2) · Single Beds (2) in Unsealed Oak Wood with Headboard and Sides in Poltrona Frau Leather · Structural GRP Floor Covered in Carpet · Unsealed Oak Wood Nightstand · Walls Covered in Unsealed Oak Wood

Guest Bathroom

- A/C System Outlet · Built in Ceiling Spotlights (3) · Clothes Hooks (2) · Combined Wash Basin Faucet · Electric WC in Ceramic · Lacquered Ceiling · Light Switches · Matte Polished Wenge Floor · Mirror · Opening Portholes in Stainless Steel with Mechanical Hook · Shower Box Covered in Laminate with Tempered Glass Door
- Shower Faucet with Double Outlets with Deviator · Showerhead on the Ceiling · Toilet Brush Holder · Toilet Roll Holder · Towel Rack · Walls Covered in Laminate
- Wash Basin in Ceramic · Wash Basin Unit in Unsealed Oak Wood and Opening Door
- Wenge Floor

Galley

- Built in Ceiling Spotlights (2) · Ceiling Covered in Vinyl Fabric · Ceramic Glass HOB with 4 Burners · Combo Refrigerator (186 LT) and Freezer (74 LT) · Dishwasher ·

Electrical Panel · Extractable Faucet · Extractor Hood 230 V · Hanging Lockers in Unsealed Oak Wood with Internal Shelf · Light Switches · Lights Under Hanging Lockers · Opening Portholes in Stainless Steel with Mechanical Hook · Microwave Oven 60HZ · Rubbish Bin · Stainless Steel Sink with Cutting Board in Lamellar Wood · Structural GRP Floor Covered with Wenge · Under Top Unit in Oak with Doors, Internal Shelves, and Drawers · Walls Covered in Oak/Laminate · Work Top in Colored Tempered Glass

Crew Cabin

· Access from Cockpit · Built in Ceiling Spotlight (3) · Ceiling Covered in Vinyl Fabric · Digital Control Panel for A/C System · Light Switches · Locker Under Bed with Lacquered Doors · Loudspeaker (2) · Mini Hi-Fi CD · Opening Portholes in Stainless Steel with Mechanical Hook · Single Bed · Structural GRP Floor Covered in Carpet · Walls Covered in Vinyl Fabric and GRP

Crew Bathroom

· Built in Ceiling Spotlight (2) · Clothes Hook · Electric WC in Ceramic · Extractable Shower with Mixer Tap · Fibreglass Floor · Lacquered Ceiling · Mirror · Toilet Brush Holder · Toilet Roll Holder · Towel Rack · Wash Basin Unit with GRP Top

Engine Room

· A/C Main Unit · Access to Engine Room from Cockpit by Ladder · Acoustic Insulation · Antiskid Aluminum Floor · Coupling Joint (2) Between Adaptor and SeaRex Flange · Diesel Engine MTU 10V 2000 M94 -1623 MHP (2) · Dynamic Air Intakes · Electric Extractor (2) · Electropumps for A/C · Engine Exhaust Muffler (2) · Generator Manifold and Exhaust Separator · Hydraulic Oil Heat Exchanger · Hydraulic Unit for Gangway and Garage Hatch · Hydraulic Unit for Steering, Trims, and Trim Tabs · Hydraulic Unit for Swim Ladder and Aft Sliding Door · Light Switch · Power Generator 23KW 120/240V 60HZ (Diff .17 KW) with Soundproof Housing · Power Take Off on and Reduction Gears · Racor Diesel Filter for Generator Fuel System · Stainless Steel Engine Exhaust Raiser (4) · Waterproof Fixed Explosion-Proof Neon Lights (2)

Propulsion and Maneuvering

· Electric Bow Thruster · Hydraulic Steering · Hydraulic Trim Tabs (2) · Nickel - Aluminum - Bronze, 5 Blades Surface Propeller (2) · Surface Drive System · New Antifouling · New Zincs and Bottom Paint · Full Service on Propulsion

Systems

· Fresh Water Systems · Boiler 30LT - 230 V · Fresh Water Outlet in Cockpit · Water Maker · Fresh Water Outlet in Engine Room · Fresh Water Pump · Level Sensor · Shower with Mixer Tap in the Swim Platform · Structural GRP Tank

Sea Water Systems

· By-Pass Valve (2) for Emergency Bilge Discharge from Engines · Fire Extinguishing and Chain Wash Pump · Preparation for Watermaker · Sea Water Basket Filter for Engines, Power Generators, A/C Pumps, Services, and Fire Extinguishing System · Sea Water Outlet for Chain Wash, Fire Extinguishing, and Water Maker · Static Sea Water Intake

Grey Water System

· E/ Pump Auxiliary Tank Discharge · E/ Pump Main Tank Discharge · Grey 3 Way Valve in Galley · Level Sensors · Manifold By-Pass for Emergency Pump Discharge · Structural GRP Tank

Fire Extinguishing System

· Automatic Extinguisher in Engine Room and Systems Area · Emergency Engine Shut Down Remote Control · Fire Extinguishing System · Manual Powder Extinguisher 1KG (1 for Each Room) · Manual Powder Extinguisher 2KG in Engine Room · Manual Powder Extinguisher 6KG in Cockpit · Smoke Detectors in Each Area

Air Conditioning System

· A/C in All Cabins, Bathrooms, and Upper Saloon (Excluded Crew Bathroom Only) · Air Conditioning American Version · Digitally Control A/C System in All Cabins and Upper Salon

Electrical System

· Audio-Video Configuration (Boat Destination Country Area) · Automatic Engine Charge Battery · Automatic Services Charge Battery · Batteries Cut-Off · Battery Charger for Generator · Breaker Box · Carling Switch 100A for 240V Shore Supply · Connecting Channels from Engine Room to Antenna Area · Earthing System All Along the Hull Joined to the Anodes Protection (Zincs) on the Transom · Electric Panels/ Switchboard for American Version · Electric System for American Version · Emergency Parallel Connection Between Service Batteries and Engine Starter · Engine Starter Battery · Equipment Power Modification (from 50HZ to 60HZ) · Glendinning 100A- 4 Poles Cable Reeler for Shore Cable (20M) · Glendinning Remote Control · Ground Connection for Sea Water Intake and Railings · Ground Fault Interrupters 120V - 6MA · Internal American Sockets on Every Box · Inverter for the Fridge · Isolation Transformer 25 KVA · Main Electric Panel with Magneto-Thermal Switches · Measuring Instruments: · Voltmeter · MTU Electronic LCD Digital Panels for Engine Control · Power Generator Starter Battery · Preparation for Decoder: Cable 120V + F Connector +TV SAT Antenna Cables in all Cabins · Service Battery · Shore Power GFI 100A-30MA · Shore Socket and Loose Cables 63A · Sockets 230V (1 for Each Room) · Switchboard Dinette · Voltage Measuring Instruments 24V/230V

Fuel System

· Electronic Fuel Level Remote Indicator in Dashboard · Fuel Precleaner (2) · Fuel Sight Gauge · Manual Fuel Discharge/Load Drainage Pump · Structural GRP Tank

Bilge System

· Automatic Immersion E/Pump for Bilge Discharge in Each Compartment with Level Sensor
· Emergency Bilge E/Pump for Each Bilge Compartment · Emergency Engine Room Bilge System Discharge Through Engines Intake Suction · Manual Immersion E/Pump for Bilge Discharge in Each Compartment with Level Sensor

Equipment

· Bag with Logo (3) · Black Mooring Line Ø 22 (4 X 20 M) · Cylindrical Fender (6) · Cylindrical Fender Cover (6) · Electrical Manual for American Version · Floating Luminous Buoy · Forward and Stern Sunpad in Ribbed White Vinyl · Life Jackets (8) · Life Rafts Compliant to American Requirements 1X8 · Life Ring with Floating Line · Manual Fire Extinguishers · Mechanical Parts Compliant to NMMA · Model Identification Plate (XFA Number) · NMMA Certification (Inspection, Testing, Documents) · NMMA Compliance Plate · Owner Manual for American Version · Pershing Bath Towel (3) · Pershing Towel (6) · Spherical Fender (2) · Spherical Fender Cover (2) · Telescopic Boat Hook · Warning Labels · Weather Station: Clock, Barometer, Thermometer · Electric Windlass for Jet Ski (Jet Ski Not Included)

Exclusions

Owner's personal belongings.

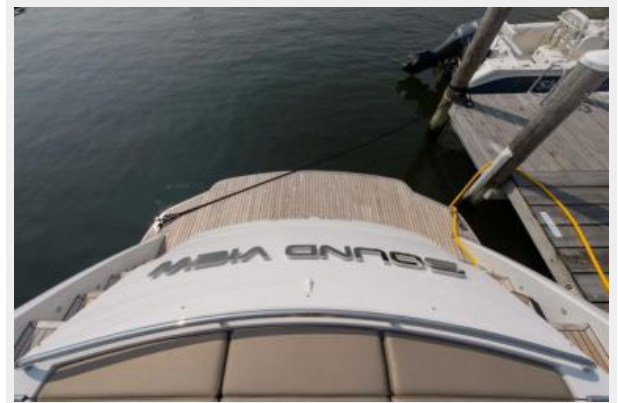
Disclaimer

The Company offers the details of this vessel or yacht in good faith but cannot guarantee or warrant the accuracy of this information nor warrant the condition of the vessel. A buyer should instruct his representatives, agents, or his surveyors, to investigate such details as the buyer desires validated. This vessel or yacht is offered subject to prior sale, price change, or withdrawal without notice.

PHOTOS

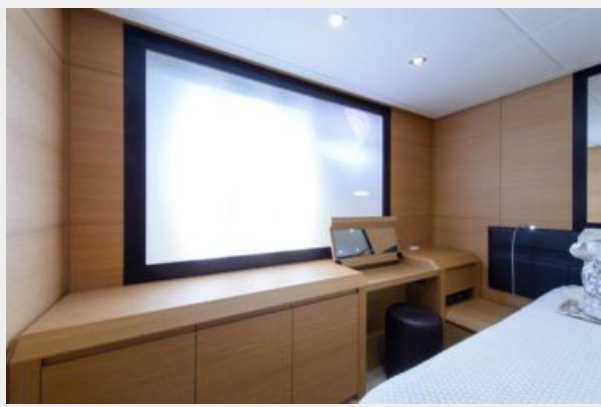


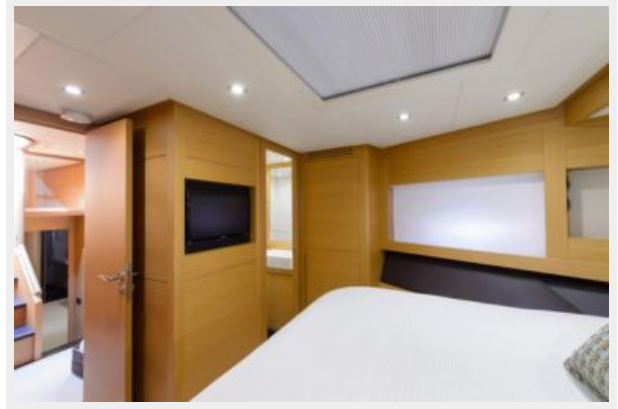


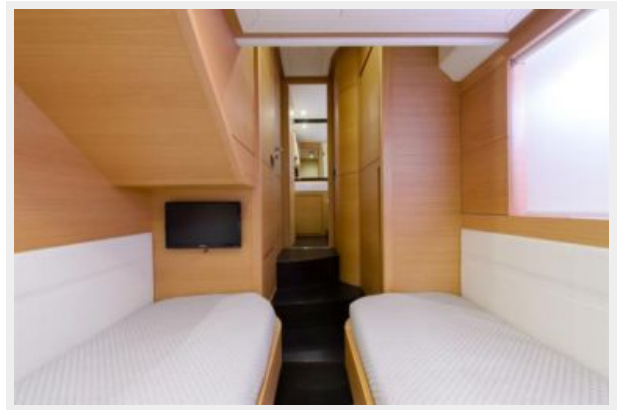




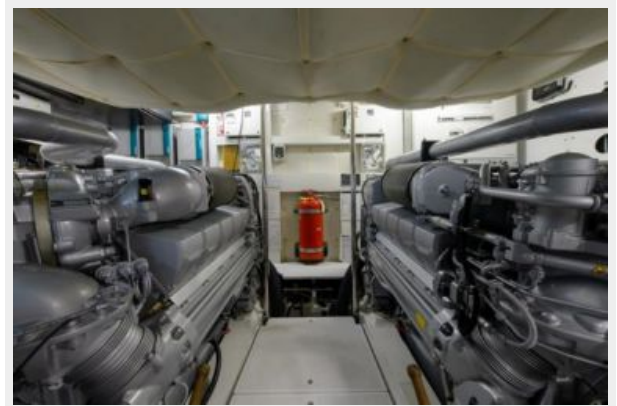












CONTACTS

Andrey Shestakov, leading yacht broker of the sales department of Shestakov Yacht Sales Inc. Shestakov Yacht Sales Inc., the official representative of the Miami/Fort Lauderdale FL headquarters.

Contact details

Email: andrey@shestakovyachtsales.com

Web: shestakovyachtsales.com/en/

Telephones

USA: +1(954)274-4435

Office hours

Monday – Saturday: **9:00 - 21:00** EDT

Sunday: **closed**

Address



Harbour Towne Marina, 850 NE 3rd St,
STE 213, Dania, FL 33004