

44FT 2015 MERIDIAN 441 SEDAN — MERIDIAN



Builder: MERIDIAN

Year Built: 2015

Model: Motor Yacht

Price: PRICE ON APPLICATION

Location: United States

LOA: 44' 0" (13.41m)

Beam: 14' 3" (4.34m)

Min Draft: 3' 1" (0.94m)

Our experienced yacht broker, Andrey Shestakov, will help you choose and buy a yacht that best suits your needs 44ft 2015 Meridian 441 Sedan — MERIDIAN from our catalogue. Presently, at Shestakov Yacht Sales Inc., we have a wide variety of yachts available on our sale's list. We also work in close contact with all the big yacht manufacturers from all over the world.

If you would like to buy a yacht 44ft 2015 Meridian 441 Sedan — MERIDIAN or would like help answering any questions concerning purchasing, selling or chartering a yacht, please call +1(954)274-4435

TABLE OF CONTENTS

TABLE OF CONTENTS	2
SPECIFICATIONS	4
Basic Information	4
Dimensions	4
Speed, Capacities and Weight	4
Accommodations	4
Hull and Deck Information	4
Engine Information	4
DETAILED INFORMATION	5
Manufacturer Provided Description	5
Bridge	5
Bridge Helm	6
Cockpit	6
Components and Equipment	6
Electrical	7
Enginee	7
ENGINE ROOM	7
Entertainment Center	7
Galley	7
Generators	8
Guest Stateroom	8
Guest / Day Head	8
Gunwale Walkway	8
Hull and Deck	9
Master Head	9
Master Stateroom	9
Mechanical	10
Salon	10

Utility Room	10
Windshield and Canvas	11
Exclusions	11
Disclaimer	11
PHOTOS	12
Manufacturer Provided Image	12
CONTACTS	18
Contact details	18
Telephones	18
Office hours	18
Address	18

SPECIFICATIONS

Basic Information

Category: Motor Yacht

Model Year: 2015

Year Built: 2015

Country: United States

Dimensions

LOA: 44' 0" (13.41m)

Beam: 14' 3" (4.34m)

Min Draft: 3' 1" (0.94m)

Clearance: 19' 6" (5.94m)

MFG Length: 47' 2" (14.38m)

Speed, Capacities and Weight

Displacement: 31233 Pounds

Water Capacity: 150 Gallons

Holding Tank: 55 Gallons

Fuel Capacity: 432 Gallons

Accommodations

Total Cabins: 2

Total Berths: 3

Total Heads: 2

Hull and Deck Information

Hull Material: Fiberglass

Engine Information

Manufacturer: Cummins

DETAILED INFORMATION

Manufacturer Provided Description

In designing the 441 Sedan, Meridian's team created a more aggressive profile and hull-side windows for the guest stateroom, easier bridge access, better topside accommodations, and more natural light and woodwork in its interior living spaces.

The 441's wide-open floor plan ensures smooth flow and unbroken lines of sight between the salon, the yacht's dedicated dinette and the full-service galley. What's more, Meridian has further enhanced its signature integrated two-tier window system to ensure improved visibility from all these interior areas. A lower helm station is available.

Plus the 441's impressive two-stateroom, two-head layout provides a gracious master suite, located forward with a queen-size island berth with innerspring pillowtop mattress. The spacious amidship guest stateroom, which spans the yacht's beam, features a double berth, thoughtfully appointed vanity and settee and plenty of storage.

Key Features:

- 360 degree visibility
- Full beam second stateroom with island berth and pillow-top innerspring mattress
- Large bridge with sundeck
- Optional underwater transom lights
- Stand-up access to engine room
- Integrated Vessel Control (IVC)
- Underwater exhaust
- Well-appointed cockpit
- Utility room
- Optional Raymarine™ electronics
- Ultra-flow™ Comfort Air System

Bridge

- 12V Courtesy Lights
- 2 Passenger Companion Seat
- Beverage Holders
- Bimini Top
- Bridge Stowage
- Companionway Door
- Entertainment Center
- Fiberglass Electronics Arch
- Helm & Seat Covers

- Karadon™ Counter Tops
- L-shaped Lounge Seat
- Single Station Spotlight
- Sony 22" obsolete; replaced with Toshiba 19"
- Windshield, Venturi

Bridge Helm

- Captain's Chair
- Dash Panel
- DTS Electronic Engine Controls
- Electronics
- Integrated Vessel Control (IVC)
- Molded Dash
- Rule® Flush-Mounted Compass
- SmartCraft™ Instrumentation
- Tilt Wheel

Cockpit

- 12V Courtesy Lighting
- Engine Room Access Hatch
- Freshwater Washdown
- Hot & Cold Rain Shower
- Locking Sliding Glass Door
- Molded Steps
- Self-bailing Cockpit
- Shore Water Connection
- Staircase, Molded
- Transom Door
- Transom Seat

Components and Equipment

- Bilge Pumps
- Integrated Vessel Control (IVC)
- Pressurized Water System
- Propeller Shafts
- Sure Seal Tide
- Water Heater

Electrical

- 110V Light Fixtures
- 12V Light Fixtures
- 12V Monitoring System
- 12V Navigation Lights
- 30 Amp Shorepower Outlets
- 50 Amp 12 Volt Smart Battery Charger (2)
- Batteries
- Battery Paralleling System
- Battery Switch Solenoids (5)
- DC Smart Converter (2)
- Electrical Load Panel
- Sacrificial Anode
- TV/Telephone Hook-up

Engine

- T380 QSB Cummins® Electronic Diesels

ENGINE ROOM

- 12V Overhead Lighting
- Access Ladder
- Acoustical & Thermal Insulation
- Structural Engine Mounting System

Entertainment Center

- 110V AM/FM, 5 Disc CD/DVD Changer & Surround Sound
- 23" LCD Television

Galley

- 110V GFI Outlets (2)
- 12V Courtesy Lights
- 12V Overhead Lights
- AC/DC Norcold Full Height Refrigerator/Freezer
- Belle Ironwood Natural Hardwood Flooring
- Cherry Cabinetry

- Convection/Microwave
- Double Sink
- Karadon™ Custom Solid-surface Countertops
- Lighted Corner Cabinet
- Recessed Cooktop

Generators

- Onan® Electronic 11.5kw Diesel

Guest Stateroom

- 110V Grounded Outlet
- 110V Light
- 12V Courtesy Lights
- 12V Overhead Lights
- 12V Reader Lights
- Built-in Bureau
- Cedar-Lined Illuminated Hanging Lockers (3)
- Cherry Cabinetry
- Designer Fabrics
- Desk
- Hullside Windows, Bonded (4)
- Island Berth
- Sony 22" obsolete; replaced with Toshiba 19"
- Vanity

Guest / Day Head

- 110V Grounded Outlet
- 12V Courtesy Light
- 12V Overhead Light
- Forced-Air Ventilation
- Mirrored Medicine Cabinet
- Molded Shower
- Vacuflush® Head System
- Vanity Cabinet

Gunwale Walkway

- Handrails

Hull and Deck

- "Shoe box" Hull & Deck Joint
- 10" Mooring Cleats (2)
- 12" Mooring Cleats (6)
- Anti-fouling Bottom Paint
- Bonded Hullside Windows
- Bonded, Tinted Windows
- Color-Coded, Custom Harnessed Wiring
- Diamond Non-Skid
- Hand-Laid Fiberglass
- Hatch
- Integrated Transom Platform
- Marine Core Construction
- Meets or exceeds all applicable U.S. Coast Guard Safety Standards
- NMMA-Certified
- Opening Salon Windows
- Quick® Windlass
- Rub Rail
- Stainless-steel Anchor Roller & Concealed Anchor Line Locker
- Stainless-Steel Framed Opening Portlights
- Thermal & Acoustical Hull Insulation
- Through-hull Fittings
- Underwater Exhaust
- Vinylester Skin Coat Applied
- Welded Stainless-Steel Deck Rails

Master Head

- 110V Grounded Outlet
- 12V Courtesy Lights
- 12V Overhead Lights (5)
- Forced-air Ventilation
- Mirrored Medicine Cabinet
- Molded Enclosed Shower Stall
- VacuFlush® Head System
- Vanity Cabinet

Master Stateroom

- 110V Grounded Outlets (2)
- 12V Courtesy Lights
- 12V Overhead Lights (5)
- 12V Reader Lights
- 12V Receptacle & Phone Jack
- Cedar-Lined Illuminated Hanging Closets (2)
- Cherry Cabinetry
- Deck Hatch Overhead (1)
- Designer Fabrics
- Queen Island Berth
- Sony 22" obsolete; replaced with Toshiba 19"

Mechanical

- Bennett Hydraulic Trim Tabs
- Fuel Shutoff Solenoids
- High Engine Temperature & Low Engine Oil Pressure Audio Alarm
- Internal Sea Strainers
- Racor Fuel Filter
- Steering

Salon

- 110V Grounded Outlet
- 110V Lights
- 12V Courtesy Lights
- 12V Overhead Lights
- AC/DC System Control
- Carpet
- Designer Package
- Digital Tank Monitoring System
- Interior Wood
- Solid-Cherry Table Hi Low
- Ultra® Leather Dual Incliners, Tumbleweed (Beige)
- Ultra® Leather Lounge Seat
- U-Shaped Dinette
- Utility Room Access

Utility Room

- 12V Overhead Lighting

-
- Access Steps
 - Hinged Hatch

Windshield and Canvas

- Black Mesh Windshield Covers
- Tempered Safety Glass Windshield Bonded

Exclusions

Owner's personal belongings.

Disclaimer

The Company offers the details of this vessel or yacht in good faith but cannot guarantee or warrant the accuracy of this information nor warrant the condition of the vessel. A buyer should instruct his representatives, agents, or his surveyors, to investigate such details as the buyer desires validated. This vessel or yacht is offered subject to prior sale, price change, or withdrawal without notice.

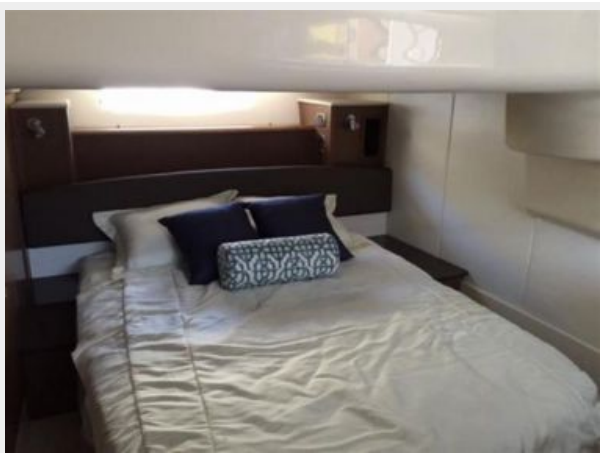
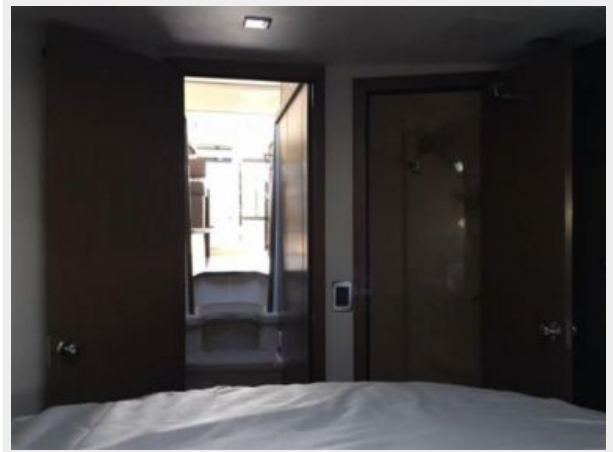
PHOTOS

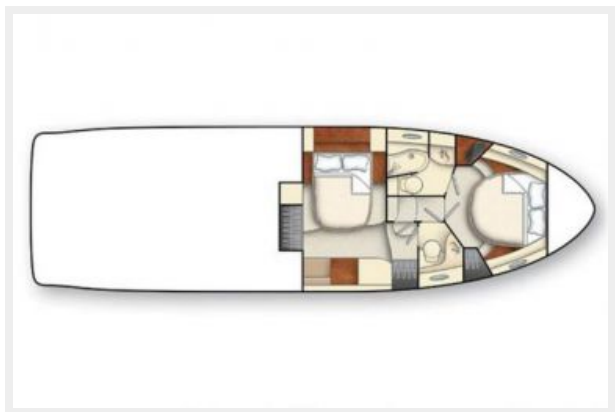
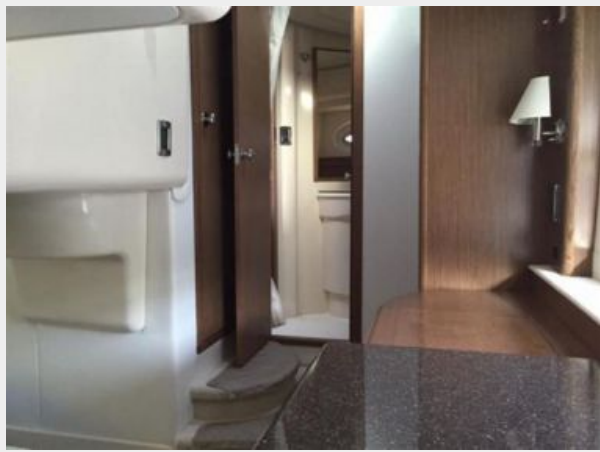
Manufacturer Provided Image

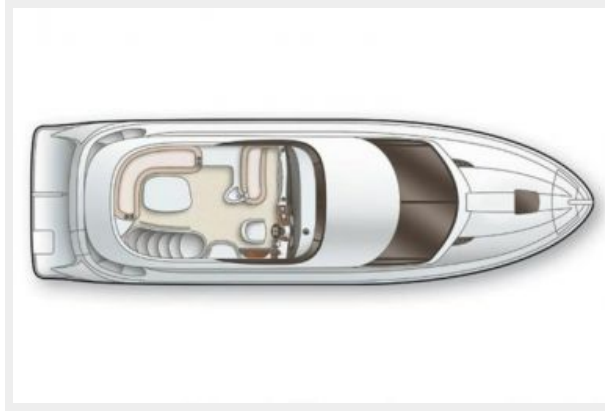












CONTACTS

Andrey Shestakov, leading yacht broker of the sales department of Shestakov Yacht Sales Inc. Shestakov Yacht Sales Inc., the official representative of the Miami/Fort Lauderdale FL headquarters.

Contact details

Email: andrey@shestakovyachtsales.com

Web: shestakovyachtsales.com/en/

Telephones

USA: +1(954)274-4435

Office hours

Monday – Saturday: **9:00 - 21:00** EDT

Sunday: **closed**

Address



Harbour Towne Marina, 850 NE 3rd St,
STE 213, Dania, FL 33004