

MONTE FINO ECHO 85 — MONTE FINO



Builder: MONTE FINO

Year Built: 2013

Model: Motor Yacht

Price: PRICE ON APPLICATION

Location: Gibraltar

LOA: 86' 0" (26.20m)

Beam: 20' 5" (6.20m)

Max Draft: 4' 8" (1.41m)

Cruise Speed: 11 Kts. (13 MPH)

Max Speed: 16 Kts. (18 MPH)

Our experienced yacht broker, Andrey Shestakov, will help you choose and buy a yacht that best suits your needs **Monte Fino ecHo 85 — MONTE FINO** from our catalogue. Presently, at Shestakov Yacht Sales Inc., we have a wide variety of yachts available on our sale's list. We also work in close contact with all the big yacht manufacturers from all over the world.

If you would like to buy a yacht **Monte Fino ecHo 85 — MONTE FINO** or would like help answering any questions concerning purchasing, selling or chartering a yacht, please call **+1(954)274-4435**

TABLE OF CONTENTS

TABLE OF CONTENTS	2
SPECIFICATIONS	5
Overview	5
Basic Information	6
Dimensions	6
Speed, Capacities and Weight	6
Accommodations	6
Hull and Deck Information	7
Engine Information	7
DETAILED INFORMATION	8
Broker's Comments	8
Navigation , Communication & Vessel Control Systems	8
Electrical System	9
Audio & Visual Equipment	9
Deck Equipment	9
Mechanical, Engineering & Yacht Systems	9
Domestic Equipment	9
Exclusions	9
Disclaimer	10
PHOTOS	11
Dusseldorf Boat Show	12
Upper Helm	12
Sun Deck Bar	12
Sun Deck	12
Foredeck Seating	12
Foredeck Seating	12
Foredeck Seating	13
Side Deck - starboard	13

Bridge	13
Bridge	13
Bridge	13
Bridge - stair to sun deck	13
Day Head on main deck	14
Saloon - looking forward / port	14
Dinning - looking forward	14
Galley	14
Galley	15
Master Cabin - looking to port / aft	15
Master Cabin - looking to starboard / aft	15
Master Cabin - looking to starboard / forward	15
Master Cabin - looking to forward	15
Master Cabin En-Suite	15
Master Cabin En-Suite	16
VIP Cabin	16
VIP Cabin En-Suite	16
VIP Cabin	16
Twin Guest Cabin	16
Captain's Cabin	16
Crew Quarter's - looking to starboard	17
Crew Quarter's - looking to port	17
Crew Quarter's - looking forward to engine room access	17
Engine Room - looking forward	17
Engine Room - looking to port	17
Engine Room - looking to starboard	17
Engine Room - detail	18
Engine Room - looking aft	18
Octoplex control panel	18

Engine Room - watermaker	18
Tank Testing	18
Launching at Dusseldorf Boat Show	18
GA - Sun Deck	19
GA - Main Deck	19
GA - Lower Deck	19
CONTACTS	20
Contact details	20
Telephones	20
Office hours	20
Address	20

SPECIFICATIONS

Overview

PART EXCHANGE POSSIBLE ONLY 185 HOURS The purchaser of this Monte Fino ecHo 85 will be the yacht's first owner. She is in superb condition having only been used as a show boat and demonstrator. The photos show her as she is now, still dressed for a show right down to the complimentary toiletries and rolled towels in the WC's, packaging still in the ovens, labels still on the cushions etc.

The ecHo 85 was conceived to operate with exceptional fuel economy. The innovative Rob Humphreys designed hull with integrated propeller tunnels and bulbous bow (an unusual feature in a yacht of this length) is superbly efficient in both displacement and semi-displacement modes. A 4,000 nautical miles range is achievable at 8.5 knots and for shorter passages or when running from the weather the yacht will cruise happily at 14 to 15 knots for 1200 to 1500 nautical miles. These figures include a fuel consumption allowance for a generator running at $\frac{3}{4}$ load. We can provide fuel consumption test figures upon request.

The ecHo feels very large compared to many other 85ft motor yachts and offers superb volume in every area. On the lower deck she has 4 excellent cabins including a full beam mid-ship master, forward VIP, twin guest and double guest all of which are en-suite. The master en-suite boasts a double rain shower. There are also spacious self contained crews quarters to accommodate 4 accessed through the transom or via the cockpit. The enormous engine room is entered through the crew area. On the main deck is a relaxing saloon and formal dining area, day head, pilot house and galley with first rate appliances such as full height American style fridge / freezer, trash compactor, Miele 4 ring induction hob, combination oven and full size dishwasher. The yacht also provides a huge amount of external space. Aft deck dining, foredeck seating / sun lounging and a flybridge sun deck, accessed from the cockpit and wheelhouse, the size of which you would typically find only on much larger yachts. Up in this area is a bar, seating / dining / sun lounging area, bbq grills, 3 fridges, ice maker and a fully equipped helm. At the aft end of the flybridge is a crane with capacity to lift a substantial tender on board plus other personal watercraft should you desire.

The yacht has a tremendously comprehensive specification leaving nothing to add other than the new owner's choice of tender and toys. Everything from the yacht's nautical and domestic systems to soft furnishings and decor are of a high quality.

Basic Information

Category: Motor Yacht

Sub Category: Expedition

Model Year: 2013

Year Built: 2013

Country: Gibraltar

Vessel Top: Hardtop

Fly Bridge: Yes

Dimensions

LOA: 86' 0" (26.20m)

Beam: 20' 5" (6.20m)

Max Draft: 4' 8" (1.41m)

Speed, Capacities and Weight

Cruise Speed: 11 Kts. (13 MPH)

Cruise Speed RPM: 1400 Kts.

Cruise Speed Range: 3000

Max Speed: 16 Kts. (18 MPH)

Max Speed RPM: 2500 Kts.

Max Speed Range: 840 Kts.

Displacement: 198416035.8 Pounds

Water Capacity: 792.516156 Gallons

Holding Tank: 224.810416252 Gallons

Fuel Capacity: 15300.052735684 Gallons

Accommodations

Total Cabins: 4

Total Berths: 5

Sleeps: 8

Total Heads: 5

Crew Cabin: 2

Crew Berths: 3

Crew Sleeps: 4

Crew Heads: 1

Hull and Deck Information

Hull Material: GRP

Hull Configuration: Semi-Displacement

Hull Color: Grey

Hull Designer: Humphreys Yacht Design

Exterior Designer: Humphreys Yacht Design

Interior Designer: Giorgia Drudi

Engine Information

Engines: 2

Manufacturer: Cummins

Model: QSM-11

Engine Type: Inboard

Fuel Type: Diesel

DETAILED INFORMATION

Broker's Comments

PART EXCHANGE POSSIBLE ONLY 185 HOURS The purchaser of this Monte Fino ecHo 85 will be the yacht's first owner. She is in superb condition having only been used as a show boat and demonstrator. The photos show her as she is now, still dressed for a show right down to the complimentary toiletries and rolled towels in the WC's, packaging still in the ovens, labels still on the cushions etc.

The ecHo 85 was conceived to operate with exceptional fuel economy. The innovative Rob Humphreys designed hull with integrated propeller tunnels and bulbous bow (an unusual feature in a yacht of this length) is superbly efficient in both displacement and semi-displacement modes. A 4,000 nautical miles range is achievable at 8.5 knots and for shorter passages or when running from the weather the yacht will cruise happily at 14 to 15 knots for 1200 to 1500 nautical miles. These figures include a fuel consumption allowance for a generator running at $\frac{3}{4}$ load. We can provide fuel consumption test figures upon request.

The ecHo feels very large compared to many other 85ft motor yachts and offers superb volume in every area. On the lower deck she has 4 excellent cabins including a full beam mid-ship master, forward VIP, twin guest and double guest all of which are en-suite. The master en-suite boasts a double rain shower. There are also spacious self contained crews quarters to accommodate 4 accessed through the transom or via the cockpit. The enormous engine room is entered through the crew area. On the main deck is a relaxing saloon and formal dining area, day head, pilot house and galley with first rate appliances such as full height American style fridge / freezer, trash compactor, Miele 4 ring induction hob, combination oven and full size dishwasher. The yacht also provides a huge amount of external space. Aft deck dining, foredeck seating / sun lounging and a flybridge sun deck, accessed from the cockpit and wheelhouse, the size of which you would typically find only on much larger yachts. Up in this area is a bar, seating / dining / sun lounging area, bbq grills, 3 fridges, ice maker and a fully equipped helm. At the aft end of the flybridge is a crane with capacity to lift a substantial tender on board plus other personal watercraft should you desire.

The yacht has a tremendously comprehensive specification leaving nothing to add other than the new owner's choice of tender and toys. Everything from the yacht's nautical and domestic systems to soft furnishings and decor are of a high quality.

Navigation , Communication & Vessel Control Systems

Twin Disc Express Joystick control combined with Twin Disc Quick Shift engine controls
Flybridge helm with primary controls and instruments repeated Aft deck control station Octoplex power distribution and monitoring system with N2K touch screen display and compatibility with devices such as iPad / iPhone etc. Besenzoni electrically adjustable helm seat at bridge helm 3 x

KEP multipurpose displays for Simrad navigation suite, CCTV and other systems Smartcraft VesselView integrated vessel management system 2 x Simrad OP40 providing control of all navigation functions Simrad AP28 rudder indicator Simrad wind indicator 3 x Simrad IS20 multi-purpose displays for rudder angle, wind & speed / depth Simrad RS87 VHF CCTV in engine room and on mast

Electrical System

40Kw Cummins Onan generator, 195 hours at Aug 1st 2015 13.5Kw Cummins Onan generator, 148 hours at Aug 1st 2015 2 x shore power connections

Audio & Visual Equipment

Saloon - 37" LED TV in cabinet on lift mechanism, Blu-Ray DVD player, Bose home entertainment system Master cabin - 32" LED TV VIP cabin - 27" LED TV Port & Starboard guest cabins - 19" LED TV All cabins and crew Pioneer touch screen dvd / cd / stereo / iPhone,iPod connection in each cabin and crew quarters Sun deck stereo

Deck Equipment

Esthec teak all round Besenzoni telescopic hydraulic passerelle Besenzoni 800Kg crane on sun deck Hydraulic bathing ladder Sun deck hard top with retractable sun awning 2 x Maxwell 4000 anchor windlass each with 90m of chain and an 85Kg anchor Twin Maxwell stern capstans Fresh water deck wash with fore, aft and sun deck outlets Courtesy lights fore, side and aft decks, cockpit stair to sun deck and sun deck

Mechanical, Engineering & Yacht Systems

38Hp Hydraulic bow thruster 25Hp Hydraulic bow thruster Naiad fin stabilisers

Domestic Equipment

Sound Deck 2 x BBQ grills 3 x fridges Icemaker Sink with hot and cold water Fibreglass hard top with extending sun awning Galley LG full height American style fridge & freezer with ice dispenser Frank double stainless steel sink Miele 4 ring ceramic hob Miele combination oven Miele full size dishwasher Trash compactor General High capacity chilled water reverse cycle air conditioning with back up pumps

Exclusions

Owner's personal belongings.

Disclaimer

The Company offers the details of this vessel or yacht in good faith but cannot guarantee or warrant the accuracy of this information nor warrant the condition of the vessel. A buyer should instruct his representatives, agents, or his surveyors, to investigate such details as the buyer desires validated. This vessel or yacht is offered subject to prior sale, price change, or withdrawal without notice.

PHOTOS



Dusseldorf Boat Show



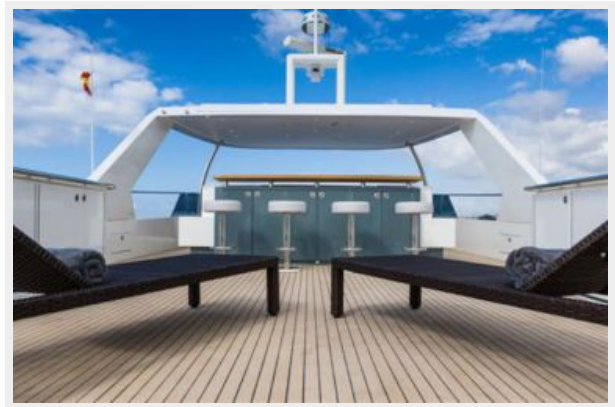
Upper Helm



Sun Deck Bar



Sun Deck



Foredeck Seating



Foredeck Seating



Foredeck Seating



Side Deck - starboard



Bridge



Bridge



Bridge



Bridge - stair to sun deck



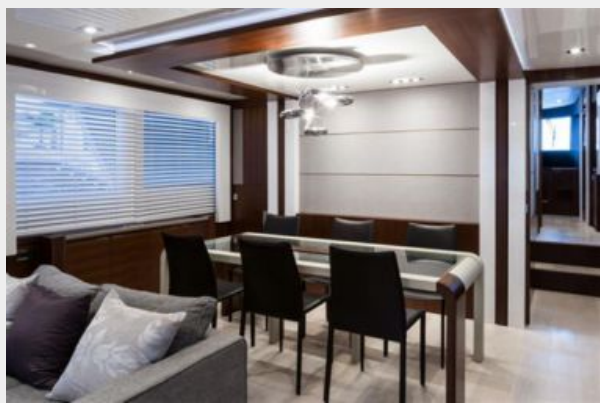
Day Head on main deck



Saloon - looking forward / port



Dinning - looking forward



Galley



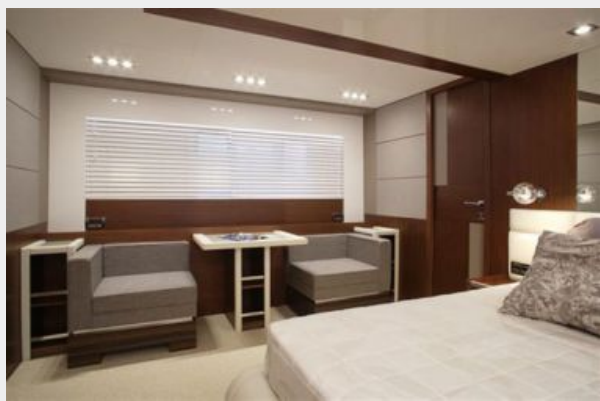
Galley



Master Cabin - looking to port / aft



Master Cabin - looking to starboard / aft



Master Cabin - looking to starboard / forward



Master Cabin - looking to forward



Master Cabin En-Suite



Master Cabin En-Suite



VIP Cabin



VIP Cabin



VIP Cabin En-Suite



Twin Guest Cabin



Captain's Cabin



Crew Quarter's - looking to starboard



Crew Quarter's - looking to port



Crew Quarter's - looking forward to engine room access



Engine Room - looking forward



Engine Room - looking to port



Engine Room - looking to starboard



Engine Room - detail



Engine Room - looking aft



Engine Room - watermaker



Octoplex control panel



Launching at Dusseldorf Boat Show



Tank Testing



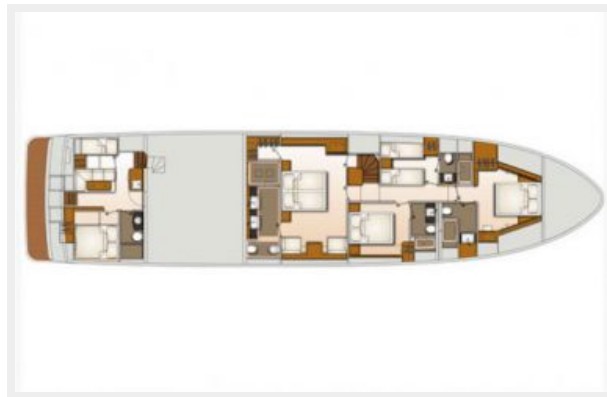
GA - Sun Deck



GA - Main Deck



GA - Lower Deck



CONTACTS

Andrey Shestakov, leading yacht broker of the sales department of Shestakov Yacht Sales Inc. Shestakov Yacht Sales Inc., the official representative of the Miami/Fort Lauderdale FL headquarters.

Contact details

Email: andrey@shestakovyachtsales.com

Web: shestakovyachtsales.com/en/

Telephones

USA: +1(954)274-4435

Office hours

Monday – Saturday: **9:00 - 21:00** EDT

Sunday: **closed**

Address



Harbour Towne Marina, 850 NE 3rd St,
STE 213, Dania, FL 33004