

MONTE FINO ECHO 85 — MONTE FINO



Судостроитель: MONTE FINO

Год постройки: 2013

Модель: Моторная яхта

Цена: **ЦЕНА ЯХТЫ ПО ЗАПРОСУ**

Местонахождение: Gibraltar

Длина общая: 86' 0" (26.20m)

Ширина: 20' 5" (6.20m)

Макс. осадка: 4' 8" (1.41m)

Крейс. скорость: 11 Kts. (13 MPH)

Макс. скорость: 16 Kts. (18 MPH)

Купить **Monte Fino echo 85 — MONTE FINO** а также выбрать подходящую вам яхту из нашего каталога яхт вам поможет опытный яхтенный брокер Андрей Шестаков. На сегодняшний день компания **Shestakov Yacht Sales Inc.** имеет большое количество яхт в собственном списке продаж, а также тесно сотрудничает со всеми крупными яхтенными производителями по всему миру.

Для того чтобы купить яхту **Monte Fino echo 85 — MONTE FINO** а также проконсультироваться по любому вопросу связанному с покупкой, продажей, чартером яхт позвоните по телефону **+7(918)465-66-44**.

ОГЛАВЛЕНИЕ

ОГЛАВЛЕНИЕ	2
ХАРАКТЕРИСТИКИ	5
Обзор	5
Основная информация	6
Размеры	6
Скорость, вместимость и масса	6
Размещение	7
Корпус и палуба	7
Информация о двигателе	7
ПОДРОБНОЕ ОПИСАНИЕ	8
Broker's Comments	8
Navigation , Communication & Vessel Control Systems	8
Electrical System	9
Audio & Visual Equipment	9
Deck Equipment	9
Mechanical, Engineering & Yacht Systems	9
Domestic Equipment	9
Исключения	9
Отказ от ответственности	10
ФОТОГРАФИИ	11
Dusseldorf Boat Show	12
Upper Helm	12
Sun Deck Bar	12
Sun Deck	12
Foredeck Seating	12
Foredeck Seating	12
Foredeck Seating	13
Side Deck - starboard	13

Bridge	13
Bridge	13
Bridge	13
Bridge - stair to sun deck	13
Day Head on main deck	14
Saloon - looking forward / port	14
Dinning - looking forward	14
Galley	14
Galley	15
Master Cabin - looking to port / aft	15
Master Cabin - looking to starboard / aft	15
Master Cabin - looking to starboard / forward	15
Master Cabin - looking to forward	15
Master Cabin En-Suite	15
Master Cabin En-Suite	16
VIP Cabin	16
VIP Cabin En-Suite	16
VIP Cabin	16
Twin Guest Cabin	16
Captain's Cabin	16
Crew Quarter's - looking to starboard	17
Crew Quarter's - looking to port	17
Crew Quarter's - looking forward to engine room access	17
Engine Room - looking forward	17
Engine Room - looking to port	17
Engine Room - looking to starboard	17
Engine Room - detail	18
Engine Room - looking aft	18
Octoplex control panel	18

Engine Room - watermaker	18
Tank Testing	18
Launching at Dusseldorf Boat Show	18
GA - Sun Deck	19
GA - Main Deck	19
GA - Lower Deck	19
КОНТАКТЫ	20
Контактная информация	20
Телефоны	20
Время работы	20
Адрес	20

ХАРАКТЕРИСТИКИ

Обзор

PART EXCHANGE POSSIBLE ONLY 185 HOURS The purchaser of this Monte Fino ecHo 85 will be the yacht's first owner. She is in superb condition having only been used as a show boat and demonstrator. The photos show her as she is now, still dressed for a show right down to the complimentary toiletries and rolled towels in the WC's, packaging still in the ovens, labels still on the cushions etc.

The ecHo 85 was conceived to operate with exceptional fuel economy. The innovative Rob Humphreys designed hull with integrated propeller tunnels and bulbous bow (an unusual feature in a yacht of this length) is superbly efficient in both displacement and semi-displacement modes. A 4,000 nautical miles range is achievable at 8.5 knots and for shorter passages or when running from the weather the yacht will cruise happily at 14 to 15 knots for 1200 to 1500 nautical miles. These figures include a fuel consumption allowance for a generator running at $\frac{3}{4}$ load. We can provide fuel consumption test figures upon request.

The ecHo feels very large compared to many other 85ft motor yachts and offers superb volume in every area. On the lower deck she has 4 excellent cabins including a full beam mid-ship master, forward VIP, twin guest and double guest all of which are en-suite. The master en-suite boasts a double rain shower. There are also spacious self contained crews quarters to accommodate 4 accessed through the transom or via the cockpit. The enormous engine room is entered through the crew area. On the main deck is a relaxing saloon and formal dining area, day head, pilot house and galley with first rate appliances such as full height American style fridge / freezer, trash compactor, Miele 4 ring induction hob, combination oven and full size dishwasher. The yacht also provides a huge amount of external space. Aft deck dining, foredeck seating / sun lounging and a flybridge sun deck, accessed from the cockpit and wheelhouse, the size of which you would typically find only on much larger yachts. Up in this area is a bar, seating / dining / sun lounging area, bbq grills, 3 fridges, ice maker and a fully equipped helm. At the aft end of the flybridge is a crane with capacity to lift a substantial tender on board plus other personal watercraft should you desire.

The yacht has a tremendously comprehensive specification leaving nothing to add other than the new owner's choice of tender and toys. Everything from the yacht's nautical and domestic systems to soft furnishings and decor are of a high quality.

Основная информация

Тип судна: Моторная яхта

Подкатегория: Expedition

Модельный год: 2013

Год постройки: 2013

Страна: Gibraltar

Верх: Hardtop

Открытая палуба мостика: Да

Размеры

Длина общая: 86' 0" (26.20m)

Ширина: 20' 5" (6.20m)

Макс. осадка: 4' 8" (1.41m)

Скорость, вместимость и масса

Крейс. скорость: 11 Kts. (13 MPH)

Крейсерская скорость поворота: 1400 Kts.

Дальность на крейсерской скорости: 3000

Макс. скорость: 16 Kts. (18 MPH)

Макс. скорость поворота: 2500 Kts.

Дальность на макс. скорости: 840 Kts.

Водоизмещение: 198416035.8 Pounds

Вместимость воды: 792.516156 Gallons

Вместимость сточного бака: 224.810416252 Gallons

Объем топливного бака: 15300.052735684 Gallons

Размещение

Всего кают: 4

Всего коек: 5

Спальные места: 8

Всего ком. состава: 5

Каюты экипажа: 2

Койки экипажа: 3

Спальных мест экипажа: 4

Комм. состав экипажа: 1

Корпус и палуба

Материал корпуса: GRP

Комплектация корпуса: Semi-Displacement

Цвет корпуса: Grey

Дизайнер корпуса: Humphreys Yacht Design

Дизайнер экстерьера: Humphreys Yacht Design

Дизайнер интерьера: Giorgia Drudi

Информация о двигателе

Двигатели: 2

Производитель: Cummins

Модель: QSM-11

Тип двигателя: Inboard

Тип топлива: Diesel

ПОДРОБНОЕ ОПИСАНИЕ

Broker's Comments

PART EXCHANGE POSSIBLE ONLY 185 HOURS The purchaser of this Monte Fino eHo 85 will be the yacht's first owner. She is in superb condition having only been used as a show boat and demonstrator. The photos show her as she is now, still dressed for a show right down to the complimentary toiletries and rolled towels in the WC's, packaging still in the ovens, labels still on the cushions etc.

The eHo 85 was conceived to operate with exceptional fuel economy. The innovative Rob Humphreys designed hull with integrated propeller tunnels and bulbous bow (an unusual feature in a yacht of this length) is superbly efficient in both displacement and semi-displacement modes. A 4,000 nautical miles range is achievable at 8.5 knots and for shorter passages or when running from the weather the yacht will cruise happily at 14 to 15 knots for 1200 to 1500 nautical miles. These figures include a fuel consumption allowance for a generator running at $\frac{3}{4}$ load. We can provide fuel consumption test figures upon request.

The eHo feels very large compared to many other 85ft motor yachts and offers superb volume in every area. On the lower deck she has 4 excellent cabins including a full beam mid-ship master, forward VIP, twin guest and double guest all of which are en-suite. The master en-suite boasts a double rain shower. There are also spacious self contained crews quarters to accommodate 4 accessed through the transom or via the cockpit. The enormous engine room is entered through the crew area. On the main deck is a relaxing saloon and formal dining area, day head, pilot house and galley with first rate appliances such as full height American style fridge / freezer, trash compactor, Miele 4 ring induction hob, combination oven and full size dishwasher. The yacht also provides a huge amount of external space. Aft deck dining, foredeck seating / sun lounging and a flybridge sun deck, accessed from the cockpit and wheelhouse, the size of which you would typically find only on much larger yachts. Up in this area is a bar, seating / dining / sun lounging area, bbq grills, 3 fridges, ice maker and a fully equipped helm. At the aft end of the flybridge is a crane with capacity to lift a substantial tender on board plus other personal watercraft should you desire.

The yacht has a tremendously comprehensive specification leaving nothing to add other than the new owner's choice of tender and toys. Everything from the yacht's nautical and domestic systems to soft furnishings and decor are of a high quality.

Navigation , Communication & Vessel Control Systems

Twin Disc Express Joystick control combined with Twin Disc Quick Shift engine controls
Flybridge helm with primary controls and instruments repeated Aft deck control station Octoplex power distribution and monitoring system with N2K touch screen display and compatibility with devices such as iPad / iPhone etc. Besenzoni electrically adjustable helm seat at bridge helm 3 x

KEP multipurpose displays for Simrad navigation suite, CCTV and other systems Smartcraft VesselView integrated vessel management system 2 x Simrad OP40 providing control of all navigation functions Simrad AP28 rudder indicator Simrad wind indicator 3 x Simrad IS20 multi-purpose displays for rudder angle, wind & speed / depth Simrad RS87 VHF CCTV in engine room and on mast

Electrical System

40Kw Cummins Onan generator, 195 hours at Aug 1st 2015 13.5Kw Cummins Onan generator, 148 hours at Aug 1st 2015 2 x shore power connections

Audio & Visual Equipment

Saloon - 37" LED TV in cabinet on lift mechanism, Blu-Ray DVD player, Bose home entertainment system Master cabin - 32" LED TV VIP cabin - 27" LED TV Port & Starboard guest cabins - 19" LED TV All cabins and crew Pioneer touch screen dvd / cd / stereo / iPhone,iPod connection in each cabin and crew quarters Sun deck stereo

Deck Equipment

Esthec teak all round Besenzoni telescopic hydraulic passerelle Besenzoni 800Kg crane on sun deck Hydraulic bathing ladder Sun deck hard top with retractable sun awning 2 x Maxwell 4000 anchor windlass each with 90m of chain and an 85Kg anchor Twin Maxwell stern capstans Fresh water deck wash with fore, aft and sun deck outlets Courtesy lights fore, side and aft decks, cockpit stair to sun deck and sun deck

Mechanical, Engineering & Yacht Systems

38Hp Hydraulic bow thruster 25Hp Hydraulic bow thruster Naiad fin stabilisers

Domestic Equipment

Sound Deck 2 x BBQ grills 3 x fridges Icemaker Sink with hot and cold water Fibreglass hard top with extending sun awning Galley LG full height American style fridge & freezer with ice dispenser Frank double stainless steel sink Miele 4 ring ceramic hob Miele combination oven Miele full size dishwasher Trash compactor General High capacity chilled water reverse cycle air conditioning with back up pumps

Исключения

При продаже яхты исключаются личные вещи владельца.

Отказ от ответственности

Компания предоставляет описание судна или яхты добросовестно, но не может гарантировать точность этой информации, а также не ручается за техническое состояние. Покупатель должен проинструктировать своих агентов или оценщиков исследовать представленную информацию более подробно, по собственному желанию. Продажа судна или яхты, изменение цены или снятие с продажи будет происходить без предварительного уведомления.

ФОТОГРАФИИ



Dusseldorf Boat Show



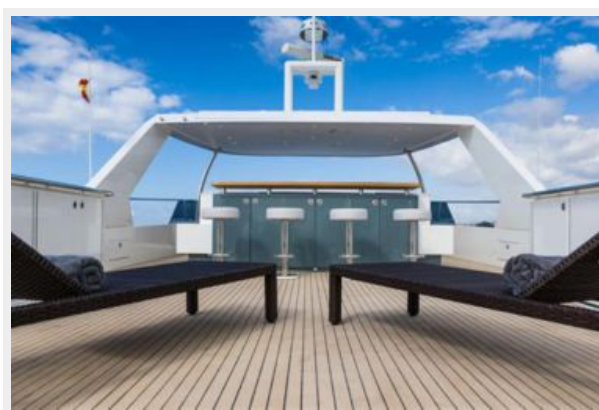
Upper Helm



Sun Deck Bar



Sun Deck



Foredeck Seating



Foredeck Seating



Foredeck Seating



Side Deck - starboard



Bridge



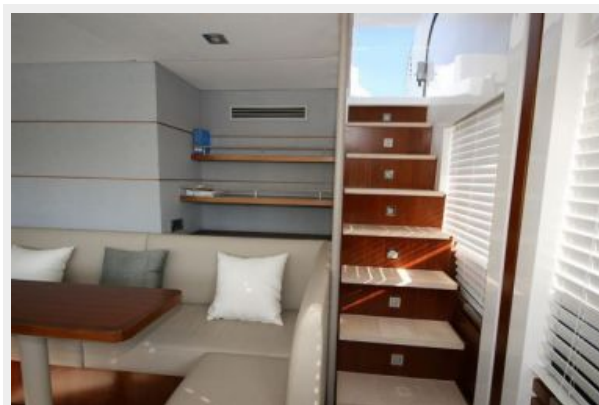
Bridge



Bridge



Bridge - stair to sun deck



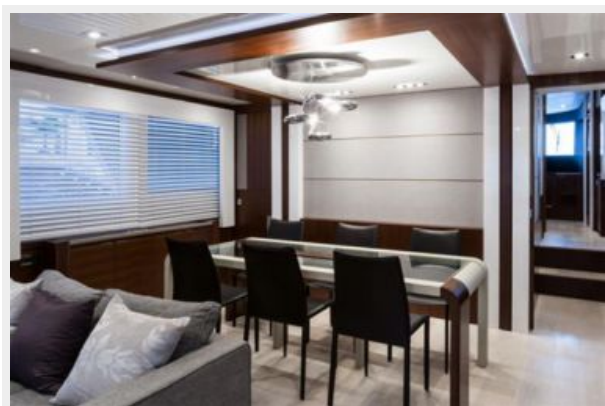
Day Head on main deck



Saloon - looking forward / port



Dinning - looking forward



Galley



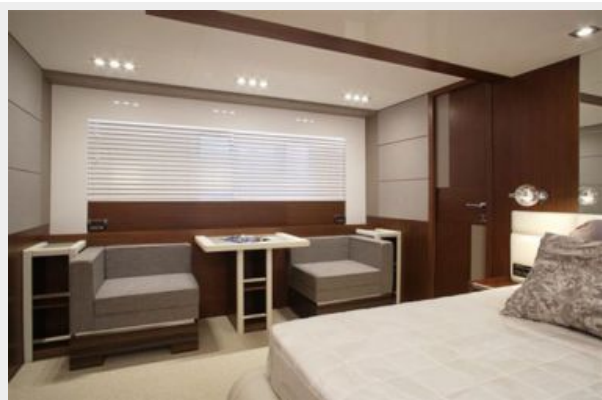
Galley



Master Cabin - looking to port / aft



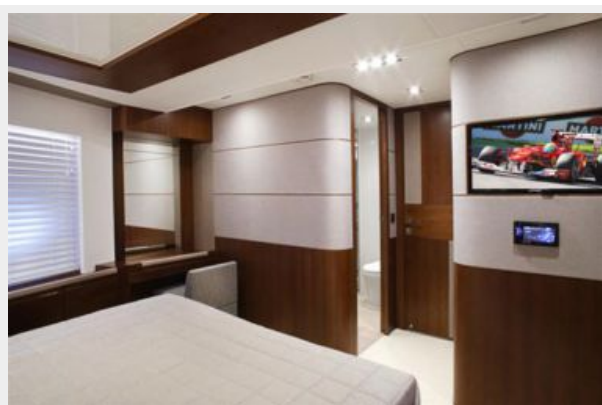
Master Cabin - looking to starboard / aft



Master Cabin - looking to starboard / forward



Master Cabin - looking to forward



Master Cabin En-Suite



Master Cabin En-Suite



VIP Cabin



VIP Cabin



VIP Cabin En-Suite



Twin Guest Cabin



Captain's Cabin



Crew Quarter's - looking to starboard



Crew Quarter's - looking to port



Crew Quarter's - looking forward to engine room access



Engine Room - looking forward



Engine Room - looking to port



Engine Room - looking to starboard



Engine Room - detail



Engine Room - looking aft



Engine Room - watermaker



Octoplex control panel



Launching at Dusseldorf Boat Show



Tank Testing



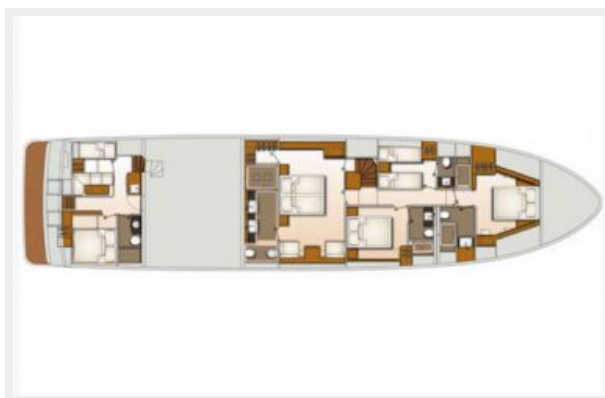
GA - Sun Deck



GA - Main Deck



GA - Lower Deck



КОНТАКТЫ

Андрей Шестаков (Andrey Shestakov) – ведущий яхтенный брокер отдела продаж яхт и судов компании Shestakov Yacht Sales Inc. Официальный представитель Shestakov Yacht Sales Inc. для русскоговорящих клиентов в центральном офисе компании в Майами/Форт Лодердейл/Флорида/США.

Контактная информация

Email: andrey@shestakovyachtsales.com

Web: shestakovyachtsales.com

Телефоны

Краснодарский край: **+7(918)465-66-44**

США, Майами, Флорида: **+1(954)274-4435**

Время работы

Понедельник – Суббота: **9:00 - 21:00**
EDT

Воскресенье: **Закрито**

Адрес



Harbour Towne Marina, 850 NE 3rd St,
STE 213, Dania, FL 33004