

THIRD TIMES A CHARM — SEA RAY



Builder: SEA RAY

Year Built: 2003

Model: Cruiser

Price: PRICE ON APPLICATION

Location: United States

LOA: 45' 0" (13.72m)

Beam: 14' 8" (4.47m)

Max Draft: 3' 1" (0.94m)

Our experienced yacht broker, Andrey Shestakov, will help you choose and buy a yacht that best suits your needs **Third Times A Charm — SEA RAY** from our catalogue. Presently, at Shestakov Yacht Sales Inc., we have a wide variety of yachts available on our sale's list. We also work in close contact with all the big yacht manufacturers from all over the world.

If you would like to buy a yacht **Third Times A Charm — SEA RAY** or would like help answering any questions concerning purchasing, selling or chartering a yacht, please call **+1(954)274-4435**

TABLE OF CONTENTS

TABLE OF CONTENTS	2
SPECIFICATIONS	3
Overview	3
Basic Information	3
Dimensions	3
Speed, Capacities and Weight	3
Accommodations	3
Hull and Deck Information	4
Engine Information	4
DETAILED INFORMATION	5
Outside Equipment / Extras	5
Additional Items	5
Electronics	5
Inside Equipment	6
Electrical Equipment	6
Accommodations	7
Deck & Hull	7
Engines	7
Exclusions	7
Disclaimer	7
PHOTOS	8
CONTACTS	20
Contact details	20
Telephones	20
Office hours	20
Address	20

SPECIFICATIONS

Overview

This 450 EB is the last hull made in this Sea ray series. The owner is original and has spared no expense updating and improving the condition of this boat. From the custom hatches to the engine room to the extensive replacement of all pumps, hoses, clamps and everything else that could be done, this Sea Ray is one of a kind.

Priced to sell this is a must see! Don't miss the opportunity to preview a truly custom 450 EB Sea Ray!

Basic Information

Category: Cruiser

Model Year: 2003

Year Built: 2003

Country: United States

Dimensions

LOA: 45' 0" (13.72m)

Beam: 14' 8" (4.47m)

Max Draft: 3' 1" (0.94m)

Speed, Capacities and Weight

Displacement: 29500 Pounds

Water Capacity: 100 Gallons

Holding Tank: 60 Gallons

Fuel Capacity: 400 Gallons

Accommodations

Total Cabins: 2

Hull and Deck Information

Hull Material: Fiberglass

Engine Information

Engines: 2

Manufacturer: Cummins

Engine Type: Inboard

Fuel Type: Diesel

DETAILED INFORMATION

Outside Equipment / Extras

- **NEW Bottom Job - August 2016**
- **NEW Zincs**
- **NEW Underwater Lights**
- **NEW - Flybridge Cushions / Upholstery**
- **NEW - EZ2CY enclosure with Bimini**
- **NEW - Sea Deck teak/holly deck "Cool Deck"**
- **NEW - Fwd, Mid, Cockpit, Fishbox, Livewell, Underwater lighting**
- **NEW - All upholstery coverings**
- **Walk through Bridge access**
- **Custom made hydraulic hatch for entire cockpit for engine room access (No other Sea Ray has this feature)**
- **Custom made hydraulic access to upgraded 8D batteries in salon, access to A/C, fuel polish system and hot water heater**
- **Hurley Marine Davit**
- **12 Volt electric reel outlets**
- **Spreader lights**
- **Cockpit cameras**
- **Engine room camera**
- **(2) Underwater cameras**
- **Cockpit Fusion remote for stereo**

Additional Items

- Hurricane cover for Flybridge
- Full Cockpit cover
- NEW - Every hose, grounding block and connections
- NEW - All thru - hull fittings
- Last hauled 6-15 New fairing block for 100 W Garmin Transducer
- NEW -Bottom job - 2015
- Prop speed
- Spare props / spare shafts
- Dive tank storage
- Livewell installed

Electronics

- NEW - Garmin 7215

- NEW - Garmin VHF 200
- NEW - Garmin VHF 100
- NEW - Garmin GMI 10/Depth, Speed Indicator
- NEW - Garmin GHC 10/ Auto Pilot
- Fusion MS-AV700i Sound system w/ 14 JRL high output Speakers & Subwoofers
- Garmin X HD Radar
- Tracvision KVH 4 HD
- XM Sirius Radio
- NEW - Garmin WiFi
- Blue Ray DVD
- NEW - Samsung Faltscreen TV's
- ACR Fwd Spotlight
- Systems monitor
- Cummins smartcraft digital read out

Inside Equipment

- Vetrigo Refrig/Freezer
- Microwave/Convection
- 3 Burner stove
- Wood flooring
- NEW - Vetus Bow Thruster Upgraded
- NEW - Algae X Fuel polishing system
- NEW - (2) high efficiency A/C units
- Marine head
- Electric bilge pump
- Manual bilge pump
- Heating
- Sea water pump
- Hot water
- Battery charger

Electrical Equipment

- NEW - Onan generator - 200hrs
- NEW - 70' Shore power cord
- 60' Spare Shore Cord Available
- NEW - Installed ISO Boost Isolator / Transformer
- 12V DC
- 110V AC
- Battery switches
- Bonding system

Accommodations

- Stbd dinette / berth
- Port settee
- Headliner
- Vacu-flush heads
- Samsung TV (Master & Guest)
- Indirect lighting
- Blinds

Deck & Hull

- Bow thruster
- Transom storage
- Cockpit stereo remote
- ble
- NEW - Windshield screens 2015
- Salon door exterior awning w/ Screen door enclosure
- Stainless rails
- Windlass

Engines

- NEW - One Cummins engine replaced in 2015
- NEW - Turbo's on both Cummins Engines
- NEW - hoses, belts and hose clamps

Exclusions

Owner's personal belongings.

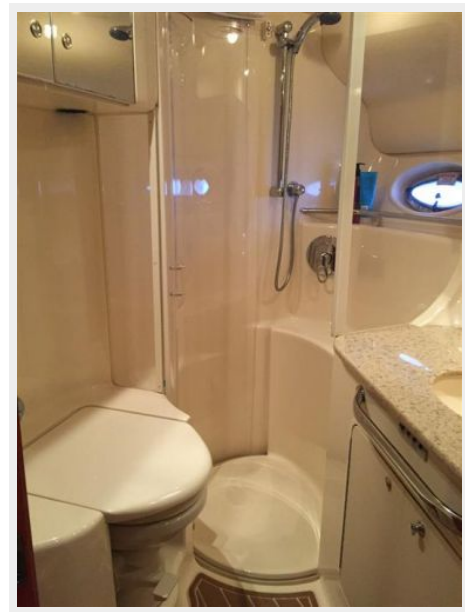
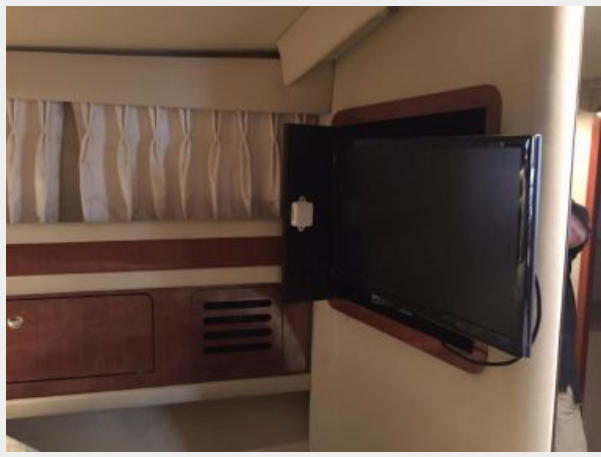
Disclaimer

The Company offers the details of this vessel or yacht in good faith but cannot guarantee or warrant the accuracy of this information nor warrant the condition of the vessel. A buyer should instruct his representatives, agents, or his surveyors, to investigate such details as the buyer desires validated. This vessel or yacht is offered subject to prior sale, price change, or withdrawal without notice.

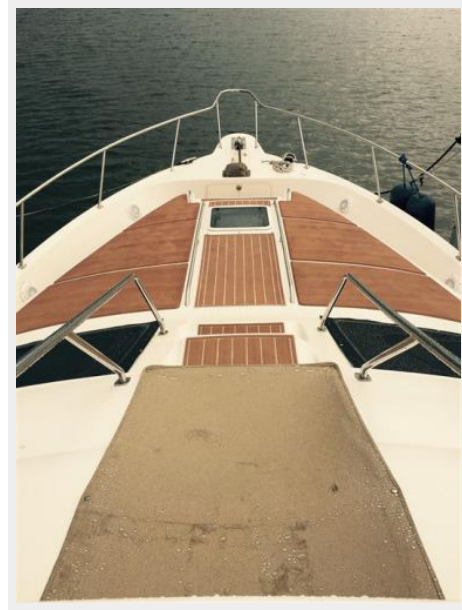
PHOTOS



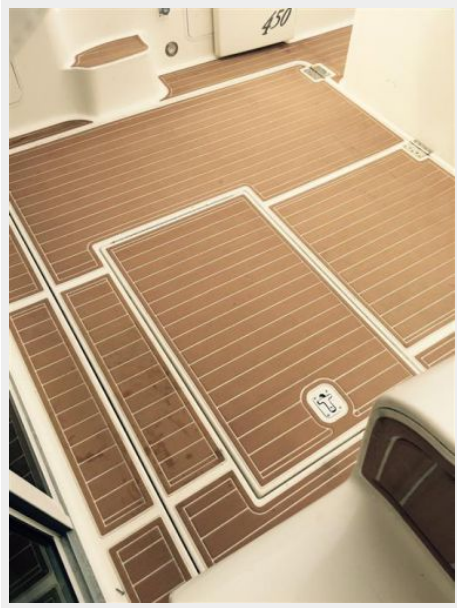






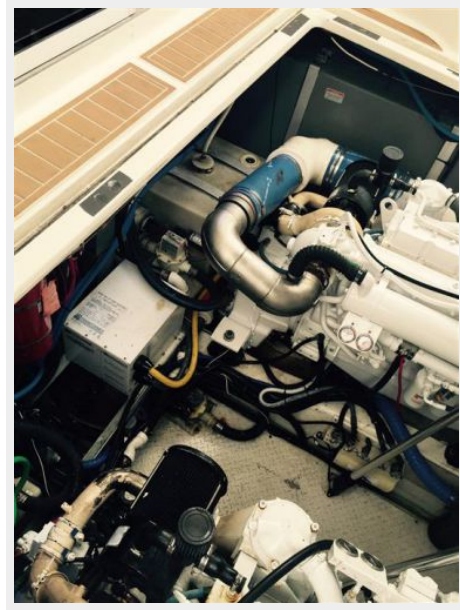
















CONTACTS

Andrey Shestakov, leading yacht broker of the sales department of Shestakov Yacht Sales Inc. Shestakov Yacht Sales Inc., the official representative of the Miami/Fort Lauderdale FL headquarters.

Contact details

Email: andrey@shestakovyachtsales.com

Web: shestakovyachtsales.com/en/

Telephones

USA: +1(954)274-4435

Office hours

Monday – Saturday: **9:00 - 21:00** EDT

Sunday: **closed**

Address



Harbour Towne Marina, 850 NE 3rd St,
STE 213, Dania, FL 33004