

ABOUT TIME — VIKING



Builder: VIKING

Year Built: 2005

Model: Sport Fisherman

Price: PRICE ON APPLICATION

Location: United States

LOA: 56' 0" (17.07m)

Beam: 18' 2" (5.54m)

Max Draft: 5' 0" (1.52m)

Cruise Speed: 30 Kts. (35 MPH)

Max Speed: 39 Kts. (45 MPH)

Our experienced yacht broker, Andrey Shestakov, will help you choose and buy a yacht that best suits your needs **About Time — VIKING** from our catalogue. Presently, at Shestakov Yacht Sales Inc., we have a wide variety of yachts available on our sale's list. We also work in close contact with all the big yacht manufacturers from all over the world.

If you would like to buy a yacht **About Time — VIKING** or would like help answering any questions concerning purchasing, selling or chartering a yacht, please call **+1(954)274-4435**

TABLE OF CONTENTS

| | |
|--|----|
| TABLE OF CONTENTS | 2 |
| SPECIFICATIONS | 5 |
| Overview | 5 |
| Basic Information | 5 |
| Dimensions | 5 |
| Speed, Capacities and Weight | 5 |
| Accommodations | 5 |
| Hull and Deck Information | 5 |
| Engine Information | 6 |
| DETAILED INFORMATION | 7 |
| Overview | 7 |
| Salon | 7 |
| Galley and Dinette | 8 |
| Companionway | 8 |
| Master Stateroom | 8 |
| Master Stateroom Head | 9 |
| Forward Guest Stateroom | 9 |
| Starboard Guest Head | 10 |
| Starboard Guest Stateroom | 10 |
| Deck and Exterior | 10 |
| Engine Room, Electrical and Mechanical | 11 |
| Flybridge and Electronics | 11 |
| Additional Items | 12 |
| Comments | 12 |
| Disclaimer | 13 |
| Exclusions | 13 |
| Disclaimer | 13 |
| PHOTOS | 14 |

| | |
|-------------------------------|----|
| Bow | 14 |
| Profile | 14 |
| Transom | 14 |
| Bridge Console | 14 |
| Salon | 14 |
| Salon | 14 |
| Salon | 15 |
| Dinette | 15 |
| Dinette | 15 |
| Dinette Table Cover | 15 |
| Salon Starboard | 15 |
| Salon Port | 15 |
| Settee | 16 |
| Salon Table Cover | 16 |
| Salon Shelving Storage | 16 |
| Master Stateroom | 16 |
| Master Head | 17 |
| Master Stateroom | 17 |
| Forward Stateroom | 17 |
| Forward Guest Stateroom | 17 |
| Forward Stateroom Starboard | 17 |
| Forward Stateroom Port | 17 |
| Guest Head | 18 |
| Washer and Dryer | 18 |
| Starboard Stateroom | 18 |
| Starboard Stateroom | 18 |
| Companionway Electrical Panel | 19 |
| Starboard Radio Box | 19 |
| Pulpit and Windlass | 19 |

| | |
|--|-----------|
| Tackle Center | 19 |
| Marquipt 1500 Tenderlift and Dinghy Cradle | 20 |
| Helm | 20 |
| Stidd Helm Chairs | 20 |
| Electronics Boxes | 20 |
| Helm Console | 20 |
| Port Radio Box | 20 |
| ENgine Room Starboard | 21 |
| Engine Room Starboard Outboard | 21 |
| Engine Room Port Outboard | 21 |
| Engine Room | 21 |
| Engine Room Port | 22 |
| Profile | 22 |
| CONTACTS | 23 |
| Contact details | 23 |
| Telephones | 23 |
| Office hours | 23 |
| Address | 23 |

SPECIFICATIONS

Overview

One owner, cruise only 56 Viking with MTU 12V-2000 engines with only 1075 hours! This is truly a peach!

Basic Information

Category: Sport Fisherman

Sub Category: Convertible

Model Year: 2005

Year Built: 2005

Country: United States

Dimensions

LOA: 56' 0" (17.07m)

Beam: 18' 2" (5.54m)

Max Draft: 5' 0" (1.52m)

Speed, Capacities and Weight

Cruise Speed: 30 Kts. (35 MPH)

Cruise Speed RPM: 1800 Kts.

Max Speed: 39 Kts. (45 MPH)

Water Capacity: 240 Gallons

Holding Tank: 125 Gallons

Fuel Capacity: 1500 Gallons

Accommodations

Total Cabins: 3

Total Heads: 2

Hull and Deck Information

Hull Material: Fiberglass

Engine Information

Engines: 2

Manufacturer: MTU

Model: 12V-2000

Engine Type: Inboard

Fuel Type: Diesel

DETAILED INFORMATION

Overview

The Viking 56 Convertible offers 3 very comfortable staterooms and 2 heads. The salon/galley area accommodates owners and guests in style. The large flybridge seats an army of friends when underway. The spacious cockpit offers plenty of room for tournament fishing or any kind of water sports. The 1500 # tender lift will handle a large tender and a universal cradle is already installed.

About Time is ready for immediate sale and you can start cruising tomorrow!

Salon

The salon is spacious and efficiently laid out. Entering through the sliding door from the cockpit, the access to the electrical panel is immediately to the right and switches are at eye level. The entrance is trouble free Amtico Teak and Holly flooring for ease of maintenance and durability. The large L-shaped settee to port is comfortable and offers storage under the seat cushions as well as in the large storage arm. The teak hi-gloss interior is rich and easy to maintain. The entry credenza to starboard houses bar storage, a clear ice maker, and a Bose Lifestyle 35 stereo system as well as open storage in drawers and cabinetry.

- Hi-gloss teak interior
- Overhead low voltage flush mounted lighting in headliner with dimmers
- Teak Hi-Lo cocktail table
- L-shaped settee with storage under and in arm
- Teak end table with lamp at forward end of settee
- Teak face on galley counter
- Teak shelves at salon entrance
- Kenmore Clear ice maker
- Sony Trinitron TV behind pocket doors
- Bose Lifestyle 35 stereo system with surround sound
- Sony VHS/DVD player
- Cruiseair air-conditioning with reverse cycle heat and SMX controls
- Hunter Douglas Silhouette shades
- Door drape for maximum privacy
- Partial salon carpet runner
- Premier edition decor
- Boat show decor accessories
- Teak salon valances
- Cover for Cocktail table

Galley and Dinette

About Time features the galley and dinette area that has become the industry standard for convertibles. Storage abounds without sacrifice of the open feel through the use of under counter refrigeration and generous upper galley drawers.

- Green Rose granite galley counter tops
- Kohler undermount galley sink
- Satin nickel Grohe faucet in galley
- Filtered water dispenser
- Subzero Under counter refrigerator drawers (4) and freezer drawers (2)
- Microwave convection oven
- Garbage disposal
- Ice maker is plumbed through water filter
- Cooktop is hidden under granite lids
- Custom Amtico flooring in galley - Warm maple and rosewood tick
- Teak dinette table with teak pedestal and trim ring
- Dinette table cover
- Storage under dinette seating

Companionway

- Low voltage overhead lighting with dimmers
- Wrapped hatch carpet installation
- Acrylic handrail at steps
- Electrical sub-panel in companionway with alarm panel and water tank gauge
- Lighted and awlgripped bilge spaces

Master Stateroom

About Time's master stateroom is befitting of the boat owner. The queen bed is athwartship and lifts on gas shocks for easy access to bulk storage. The head is private to the stateroom and features full amenities.

- Athwartship queen bed with storage under
- Aft wall of hanging lockers with mirrored doors
- End tables with lamps and storage
- Private en suite head with stall shower and glass single piece shower door
- Cruisair air conditioning with reverse cycle heat and SMX controls
- Air conditioning outlets in valance above bed for indirect air circulation

- Flat screen TV
- Upgraded mattress
- Custom teak headboard
- Overhead low voltage lighting with dimmers
- Indirect rope lighting
- Individually switched reading lights

Master Stateroom Head

The Master head is private to the master stateroom.

- Custom Amtico flooring - Rosewood and Tick
- Mirrored ceiling
- Mirrored backsplash with teak trim
- Linen closet with mirrored door
- Vanity with teak face and Green Rose Granite counter top
- Fiberglass stall shower with single piece glass shower door
- Grohe faucets and fixtures
- Magnum Opus head system with china bowl
- Air conditioning vent
- Exhaust fan

Forward Guest Stateroom

The forward stateroom features a pedestal queen bed and private access to the starboard guest head.

- Queen bed with mattress upgrade
- Bed lifts on gas shocks for easy access to storage below
- 2 additional drawers below bed
- Teak faced upper storage cabinets
- Teak faced hanging locker
- Private access to guest head
- Flat panel TV
- Stereo speakers with volume control
- Overhead low voltage lighting with dimmers
- Cruisair air conditioning with reverse cycle heat and SMX controls
- Indirect rope lighting
- Individually switched reading lights
- 2 sets of custom sheets

Starboard Guest Head

The starboard guest head services the forward and starboard staterooms via private access doors. It also serves as the day head via a door from the companionway. The washer and dryer are in a closet in this head.

- Teak faced vanity with Green Rose granite counter top
- Mirrored backsplash with teak trim
- Single piece shower door
- Grohe faucets and fixtures
- Full sized Magnum Opus head with china bowl
- Air conditioning vent
- Exhaust fan
- Custom Amtico flooring - Rosewood and tick

Starboard Guest Stateroom

The starboard stateroom features crossover upper-lower bunks which allows for abundant storage in lockers.

- Comfortable crossover bunks
- Teak faced cabinetry with good storage
- Storage under aft lower bunk
- Cruisair air conditioning with reverse cycle heat and SMX control
- Overhead low voltage lighting
- Stereo speakers with volume control
- 2 sets of custom sheets

Deck and Exterior

- Seafoam green hull
- Topsides painted Snow White
- Marquipt Tender Lift davit - 1500 # capacity
- Custom dinghy storage rack on bow
- Lewmar Ocean 3 Windlass with rope/chain combo
- Fiberglass bow pulpit
- Viking factory hardtop with molded in quartz lights
- Bowmar hatch in hardtop
- Custom handrails mounted in strategic places for maximum safety
- Transom door and gate
- Removable dive ladder mounted beneath transom door
- 2 step boxes in cockpit

- Oval exhaust outlets
- Fiberglass side thru hulls
- No exposed fasteners on flybridge flanges
- Drip dry foam for flybridge cushions
- Strataglass enclosure 3 sides
- Sunbrella winter covers
- 3 cockpit in deck boxes with fishbox in center
- Powdercoated aluminum flybridge ladder

Engine Room, Electrical and Mechanical

- MTU 12V-2000 1520HP engines with 1075 hours
- Onan EQ-D 21.5 KW generator with 1225 hours
- Generator gas water separator
- Racor fuel filters for engines and generator
- Delta T engine room vents
- Awlgripped engine room
- All pumps in engine room painted snow white
- Tool box mounted on port side shelf in engine room
- Newmar Smart Chargers (2) for ships service batteries and starting batteries
- BUC Isoboost isolation transformer for shore power
- 50 amp shore power with Glendenning cablemaster
- Oil change system with line run to dockside box for easy access
- Fuel transfer system from Aux tank forward to main tank
- Backup seawater pump, thru hull and strainer for ac system
- Domestic water system with fiberglass tank, 1 110v water pump, water heater, filter, and manifold valves for each fixture
- Fresh water outlets on flybridge, in anchor locker, and in cockpit
- Y-valve for fresh and raw water in cockpit
- Backup 24V fresh water pump
- All bilges awl gripped white

Flybridge and Electronics

- Teak helm pod with single lever controls
- VDO gauges in helm pod
- Stidd helm chairs
- 6 rod rocket launcher on flybridge rail
- 18' Bomar hatch in hardtop
- Reversible backrest on starboard riding seat
- Refrigerated drinkbox in forward corner
- Flush mounted electronics boxes

- Radio boxes port and starboard of helm pod
- Track to track curtain installation
- Fresh water outlet

Electronics

- (2) ICOM M-602 VHF's
- Simrad AP 20 Autopilot
- Northstar 6000i GPS/Plotter
- (2) VEI screens
- (2) Furuno Black box NavNet gps/plotter/radar
- Furuno RD 30 depth/temp
- Furuno GP37 gps
- Polyplanar stereo
- Moritz alarm panel
- DDEC engine displays
- DDC backup electronic controls
- KVH satellite TV
- ITT Jabsco searchlight
- Trac Phone
- Epirb on hardtop

Additional Items

- Spare props and propsmith
- Spare filters and belts
- Additional spares onboard to convey to new owner

Comments

The Viking 56 is known to be a great performer with top speeds near if not touching 40 knots and easy 30 knot cruise or full cruise speeds in the 33 to 34 knot range! She is dry and soft riding and a worthy fish or cruise boat.

This Viking 56, About Time, has been exceptionally well maintained and it shows. The painted topsides shine better than new. The interior looks like the day she left the factory. Clearly, she has never been fished, but with a little investment in the right gear, she could be ready to go in short order. Prefer to cruise? About Time is ready to go tomorrow.

Call now! This one will not last long!

Disclaimer

While we attempt to display current and accurate data, this listing may not reflect the most recent transactions or may contain occasional data entry errors. Selling agent makes no warranties, express or implied, regarding the content or availability of the products described herein. All inventory listed is subject to availability and prior sale. Please consult selling agent for details. Prices are quoted for the USA only and may not include transportation, taxes, or other applicable charges. Photographs may be representative only and may vary somewhat from the actual items offered for sale. We will not be responsible for inaccurate data obtained from our site. Please check with your local dealer to ensure that you have the latest information available. Information on this web site could include technical inaccuracies or typographical errors. Changes may be periodically made to the information or the products herein. Questions or comments regarding these policies may be directed to website hosting agent.

Exclusions

Owner's personal belongings.

Disclaimer

The Company offers the details of this vessel or yacht in good faith but cannot guarantee or warrant the accuracy of this information nor warrant the condition of the vessel. A buyer should instruct his representatives, agents, or his surveyors, to investigate such details as the buyer desires validated. This vessel or yacht is offered subject to prior sale, price change, or withdrawal without notice.

PHOTOS

Bow



Profile



Transom



Bridge Console



Salon



Salon



Salon



Dinette



Dinette



Dinette Table Cover



Salon Starboard



Salon Port



Settee



Salon Table Cover



Salon Shelving Storage



Master Stateroom



Master Stateroom



Master Head



Forward Stateroom



Forward Guest Stateroom



Forward Stateroom Starboard



Forward Stateroom Port



Guest Head



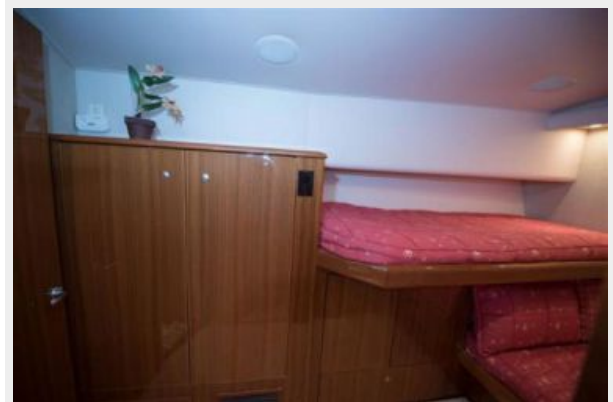
Washer and Dryer



Starboard Stateroom



Starboard Stateroom



Companionway Electrical Panel



Starboard Radio Box



Tackle Center



Pulpit and Windlass



Marquipt 1500 Tenderlift and Dinghy Cradle



Helm



Stidd Helm Chairs



Electronics Boxes



Helm Console



Port Radio Box



ENgine Room Starboard



Engine Room Starboard Outboard



Engine Room Port Outboard



Engine Room



Engine Room Port



Profile



CONTACTS

Andrey Shestakov, leading yacht broker of the sales department of Shestakov Yacht Sales Inc. Shestakov Yacht Sales Inc., the official representative of the Miami/Fort Lauderdale FL headquarters.

Contact details

Email: andrey@shestakovyachtsales.com

Web: shestakovyachtsales.com/en/

Telephones

USA: +1(954)274-4435

Office hours

Monday – Saturday: **9:00 - 21:00** EDT

Sunday: **closed**

Address



Harbour Towne Marina, 850 NE 3rd St,
STE 213, Dania, FL 33004