

## ABOUT TIME — VIKING



**Судостроитель:** [VIKING](#)

**Год постройки:** 2005

**Модель:** Катер для спортивной рыбалки

**Цена:** **ЦЕНА ЯХТЫ ПО ЗАПРОСУ**

**Местонахождение:** United States

**Длина общая:** 56' 0" (17.07m)

**Ширина:** 18' 2" (5.54m)

**Макс. осадка:** 5' 0" (1.52m)

**Крейс. скорость:** 30 Kts. (35 MPH)

**Макс. скорость:** 39 Kts. (45 MPH)

Купить **About Time — VIKING** а также выбрать подходящую вам яхту из нашего каталога яхт вам поможет опытный яхтенный брокер Андрей Шестаков. На сегодняшний день компания **Shestakov Yacht Sales Inc.** имеет большое количество яхт в собственном списке продаж, а также тесно сотрудничает со всеми крупными яхтенными производителями по всему миру.

Для того чтобы купить яхту **About Time — VIKING** а также проконсультироваться по любому вопросу связанному с покупкой, продажей, чартером яхт позвоните по телефону **+7(918)465-66-44**.

# ОГЛАВЛЕНИЕ

ОГЛАВЛЕНИЕ	2
ХАРАКТЕРИСТИКИ	5
Обзор	5
Основная информация	5
Размеры	5
Скорость, вместимость и масса	5
Размещение	5
Корпус и палуба	6
Информация о двигателе	6
ПОДРОБНОЕ ОПИСАНИЕ	7
Overview	7
Salon	7
Galley and Dinette	8
Companionway	8
Master Stateroom	8
Master Stateroom Head	9
Forward Guest Stateroom	9
Starboard Guest Head	10
Starboard Guest Stateroom	10
Deck and Exterior	10
Engine Room, Electrical and Mechanical	11
Flybridge and Electronics	11
Additional Items	12
Comments	12
Disclaimer	13
Исключения	13
Отказ от ответственности	13
ФОТОГРАФИИ	14

Bow	14
Profile	14
Transom	14
Bridge Console	14
Salon	14
Salon	14
Salon	15
Dinette	15
Dinette	15
Dinette Table Cover	15
Salon Starboard	15
Salon Port	15
Settee	16
Salon Table Cover	16
Salon Shelving Storage	16
Master Stateroom	16
Master Head	17
Master Stateroom	17
Forward Stateroom	17
Forward Guest Stateroom	17
Forward Stateroom Starboard	17
Forward Stateroom Port	17
Guest Head	18
Washer and Dryer	18
Starboard Stateroom	18
Starboard Stateroom	18
Companionway Electrical Panel	19
Starboard Radio Box	19
Pulpit and Windlass	19

---

Tackle Center	19
Marquipt 1500 Tenderlift and Dinghy Cradle	20
Helm	20
Stidd Helm Chairs	20
Electronics Boxes	20
Helm Console	20
Port Radio Box	20
ENgine Room Starboard	21
Engine Room Starboard Outboard	21
Engine Room Port Outboard	21
Engine Room	21
Engine Room Port	22
Profile	22
<b>КОНТАКТЫ</b>	<b>23</b>
Контактная информация	23
Телефоны	23
Время работы	23
Адрес	23

# ХАРАКТЕРИСТИКИ

## Обзор

One owner, cruise only 56 Viking with MTU 12V-2000 engines with only 1075 hours! This is truly a peach!

## Основная информация

**Тип судна:** Катер для спортивной рыбалки

**Подкатегория:** Convertible

**Модельный год:** 2005

**Год постройки:** 2005

**Страна:** United States

## Размеры

**Длина общая:** 56' 0" (17.07m)

**Ширина:** 18' 2" (5.54m)

**Макс. осадка:** 5' 0" (1.52m)

## Скорость, вместимость и масса

**Крейс. скорость:** 30 Kts. (35 MPH)

**Крейсерская скорость поворота:** 1800 Kts.

**Макс. скорость:** 39 Kts. (45 MPH)

**Вместимость воды:** 240 Gallons

**Вместимость сточного бака:** 125 Gallons **Объем топливного бака:** 1500 Gallons

## Размещение

**Всего кают:** 3

**Всего ком. состава:** 2

## Корпус и палуба

---

**Материал корпуса:** Fiberglass

## Информация о двигателе

---

**Двигатели:** 2

**Производитель:** MTU

**Модель:** 12V-2000

**Тип двигателя:** Inboard

**Тип топлива:** Diesel

---

# ПОДРОБНОЕ ОПИСАНИЕ

---

## Overview

---

The Viking 56 Convertible offers 3 very comfortable staterooms and 2 heads. The salon/galley area accommodates owners and guests in style. The large flybridge seats an army of friends when underway. The spacious cockpit offers plenty of room for tournament fishing or any kind of water sports. The 1500 # tender lift will handle a large tender and a universal cradle is already installed.

About Time is ready for immediate sale and you can start cruising tomorrow!

## Salon

---

The salon is spacious and efficiently laid out. Entering through the sliding door from the cockpit, the access to the electrical panel is immediately to the right and switches are at eye level. The entrance is trouble free Amtico Teak and Holly flooring for ease of maintenance and durability. The large L-shaped settee to port is comfortable and offers storage under the seat cushions as well as in the large storage arm. The teak hi-gloss interior is rich and easy to maintain. The entry credenza to starboard houses bar storage, a clear ice maker, and a Bose Lifestyle 35 stereo system as well as open storage in drawers and cabinetry.

- Hi-gloss teak interior
- Overhead low voltage flush mounted lighting in headliner with dimmers
- Teak Hi-Lo cocktail table
- L-shaped settee with storage under and in arm
- Teak end table with lamp at forward end of settee
- Teak face on galley counter
- Teak shelves at salon entrance
- Kenmore Clear ice maker
- Sony Trinitron TV behind pocket doors
- Bose Lifestyle 35 stereo system with surround sound
- Sony VHS/DVD player
- Cruiseair air-conditioning with reverse cycle heat and SMX controls
- Hunter Douglas Silhouette shades
- Door drape for maximum privacy
- Partial salon carpet runner
- Premier edition decor
- Boat show decor accessories
- Teak salon valances
- Cover for Cocktail table

---

## Galley and Dinette

---

About Time features the galley and dinette area that has become the industry standard for convertibles. Storage abounds without sacrifice of the open feel through the use of under counter refrigeration and generous upper galley drawers.

- Green Rose granite galley counter tops
- Kohler undermount galley sink
- Satin nickel Grohe faucet in galley
- Filtered water dispenser
- Subzero Under counter refrigerator drawers (4) and freezer drawers (2)
- Microwave convection oven
- Garbage disposal
- Ice maker is plumbed through water filter
- Cooktop is hidden under granite lids
- Custom Amtico flooring in galley - Warm maple and rosewood tick
- Teak dinette table with teak pedestal and trim ring
- Dinette table cover
- Storage under dinette seating

---

## Companionway

---

- Low voltage overhead lighting with dimmers
- Wrapped hatch carpet installation
- Acrylic handrail at steps
- Electrical sub-panel in companionway with alarm panel and water tank gauge
- Lighted and awlgripped bilge spaces

---

## Master Stateroom

---

About Time's master stateroom is befitting of the boat owner. The queen bed is athwartship and lifts on gas shocks for easy access to bulk storage. The head is private to the stateroom and features full amenities.

- Athwartship queen bed with storage under
- Aft wall of hanging lockers with mirrored doors
- End tables with lamps and storage
- Private en suite head with stall shower and glass single piece shower door
- Cruisair air conditioning with reverse cycle heat and SMX controls
- Air conditioning outlets in valance above bed for indirect air circulation



- Flat screen TV
- Upgraded mattress
- Custom teak headboard
- Overhead low voltage lighting with dimmers
- Indirect rope lighting
- Individually switched reading lights

## Master Stateroom Head

---

The Master head is private to the master stateroom.

- Custom Amtico flooring - Rosewood and Tick
- Mirrored ceiling
- Mirrored backsplash with teak trim
- Linen closet with mirrored door
- Vanity with teak face and Green Rose Granite counter top
- Fiberglass stall shower with single piece glass shower door
- Grohe faucets and fixtures
- Magnum Opus head system with china bowl
- Air conditioning vent
- Exhaust fan

## Forward Guest Stateroom

---

The forward stateroom features a pedestal queen bed and private access to the starboard guest head.

- Queen bed with mattress upgrade
- Bed lifts on gas shocks for easy access to storage below
- 2 additional drawers below bed
- Teak faced upper storage cabinets
- Teak faced hanging locker
- Private access to guest head
- Flat panel TV
- Stereo speakers with volume control
- Overhead low voltage lighting with dimmers
- Cruisair air conditioning with reverse cycle heat and SMX controls
- Indirect rope lighting
- Individually switched reading lights
- 2 sets of custom sheets

---

## Starboard Guest Head

---

The starboard guest head services the forward and starboard staterooms via private access doors. It also serves as the day head via a door from the companionway. The washer and dryer are in a closet in this head.

- Teak faced vanity with Green Rose granite counter top
- Mirrored backsplash with teak trim
- Single piece shower door
- Grohe faucets and fixtures
- Full sized Magnum Opus head with china bowl
- Air conditioning vent
- Exhaust fan
- Custom Amtico flooring - Rosewood and tick

---

## Starboard Guest Stateroom

---

The starboard stateroom features crossover upper-lower bunks which allows for abundant storage in lockers.

- Comfortable crossover bunks
- Teak faced cabinetry with good storage
- Storage under aft lower bunk
- Cruisair air conditioning with reverse cycle heat and SMX control
- Overhead low voltage lighting
- Stereo speakers with volume control
- 2 sets of custom sheets

---

## Deck and Exterior

---

- Seafoam green hull
- Topsides painted Snow White
- Marquipt Tender Lift davit - 1500 # capacity
- Custom dinghy storage rack on bow
- Lewmar Ocean 3 Windlass with rope/chain combo
- Fiberglass bow pulpit
- Viking factory hardtop with molded in quartz lights
- Bowmar hatch in hardtop
- Custom handrails mounted in strategic places for maximum safety
- Transom door and gate
- Removable dive ladder mounted beneath transom door
- 2 step boxes in cockpit

- Oval exhaust outlets
- Fiberglass side thru hulls
- No exposed fasteners on flybridge flanges
- Drip dry foam for flybridge cushions
- Strataglass enclosure 3 sides
- Sunbrella winter covers
- 3 cockpit in deck boxes with fishbox in center
- Powdercoated aluminum flybridge ladder

---

## Engine Room, Electrical and Mechanical

---

- MTU 12V-2000 1520HP engines with 1075 hours
- Onan EQ-D 21.5 KW generator with 1225 hours
- Generator gas water separator
- Racor fuel filters for engines and generator
- Delta T engine room vents
- Awlgripped engine room
- All pumps in engine room painted snow white
- Tool box mounted on port side shelf in engine room
- Newmar Smart Chargers (2) for ships service batteries and starting batteries
- BUC Isoboost isolation transformer for shore power
- 50 amp shore power with Glendenning cablemaster
- Oil change system with line run to dockside box for easy access
- Fuel transfer system from Aux tank forward to main tank
- Backup seawater pump, thru hull and strainer for ac system
- Domestic water system with fiberglass tank, 1 10v water pump, water heater, filter, and manifold valves for each fixture
- Fresh water outlets on flybridge, in anchor locker, and in cockpit
- Y-valve for fresh and raw water in cockpit
- Backup 24V fresh water pump
- All bilges awl gripped white

---

## Flybridge and Electronics

---

- Teak helm pod with single lever controls
- VDO gauges in helm pod
- Stidd helm chairs
- 6 rod rocket launcher on flybridge rail
- 18' Bomar hatch in hardtop
- Reversible backrest on starboard riding seat
- Refrigerated drinkbox in forward corner
- Flush mounted electronics boxes

- Radio boxes port and starboard of helm pod
- Track to track curtain installation
- Fresh water outlet

## Electronics

- (2) ICOM M-602 VHF's
- Simrad AP 20 Autopilot
- Northstar 6000i GPS/Plotter
- (2) VEI screens
- (2) Furuno Black box NavNet gps/plotter/radar
- Furuno RD 30 depth/temp
- Furuno GP37 gps
- Polyplanar stereo
- Moritz alarm panel
- DDEC engine displays
- DDC backup electronic controls
- KVH satellite TV
- ITT Jabsco searchlight
- Trac Phone
- Epirb on hardtop

## Additional Items

---

- Spare props and propsmith
- Spare filters and belts
- Additional spares onboard to convey to new owner

## Comments

---

The Viking 56 is known to be a great performer with top speeds near if not touching 40 knots and easy 30 knot cruise or full cruise speeds in the 33 to 34 knot range! She is dry and soft riding and a worthy fish or cruise boat.

This Viking 56, About Time, has been exceptionally well maintained and it shows. The painted topsides shine better than new. The interior looks like the day she left the factory. Clearly, she has never been fished, but with a little investment in the right gear, she could be ready to go in short order. Prefer to cruise? About Time is ready to go tomorrow.

Call now! This one will not last long!

---

## Disclaimer

---

While we attempt to display current and accurate data, this listing may not reflect the most recent transactions or may contain occasional data entry errors. Selling agent makes no warranties, express or implied, regarding the content or availability of the products described herein. All inventory listed is subject to availability and prior sale. Please consult selling agent for details. Prices are quoted for the USA only and may not include transportation, taxes, or other applicable charges. Photographs may be representative only and may vary somewhat from the actual items offered for sale. We will not be responsible for inaccurate data obtained from our site. Please check with your local dealer to ensure that you have the latest information available. Information on this web site could include technical inaccuracies or typographical errors. Changes may be periodically made to the information or the products herein. Questions or comments regarding these policies may be directed to website hosting agent.

---

## Исключения

---

При продаже яхты исключаются личные вещи владельца.

---

## Отказ от ответственности

---

Компания предоставляет описание судна или яхты добросовестно, но не может гарантировать точность этой информации, а также не ручается за техническое состояние. Покупатель должен проинструктировать своих агентов или оценщиков исследовать представленную информацию более подробно, по собственному желанию. Продажа судна или яхты, изменение цены или снятие с продажи будет происходить без предварительного уведомления.

# ФОТОГРАФИИ

**Bow**



**Profile**



**Transom**



**Bridge Console**



**Salon**



**Salon**



**Salon**



**Dinette**



**Dinette**



**Dinette Table Cover**



**Salon Starboard**



**Salon Port**



**Settee**



**Salon Table Cover**



**Salon Shelving Storage**



**Master Stateroom**





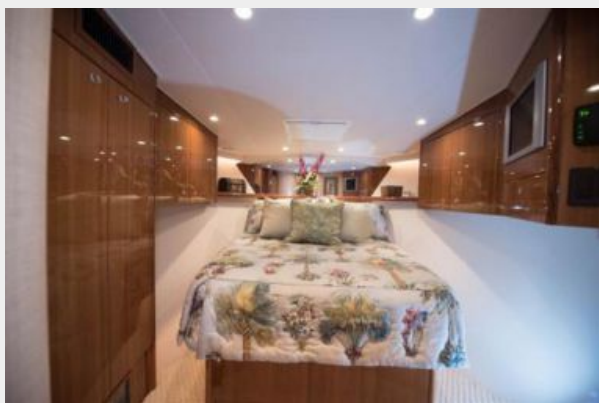
**Master Stateroom**



**Master Head**



**Forward Stateroom**



**Forward Guest Stateroom**



**Forward Stateroom Starboard**



**Forward Stateroom Port**



**Guest Head**



**Washer and Dryer**



**Starboard Stateroom**



**Starboard Stateroom**



### Companionway Electrical Panel



### Starboard Radio Box



### Tackle Center



### Pulpit and Windlass



### Marquipt 1500 Tenderlift and Dinghy Cradle



### Helm



### Stidd Helm Chairs



### Electronics Boxes



### Helm Console



### Port Radio Box



**ENgine Room Starboard**



**Engine Room Starboard Outboard**



**Engine Room Port Outboard**



**Engine Room**



## Engine Room Port



## Profile



# КОНТАКТЫ

---

Андрей Шестаков (Andrey Shestakov) – ведущий яхтенный брокер отдела продаж яхт и судов компании Shestakov Yacht Sales Inc. Официальный представитель Shestakov Yacht Sales Inc. для русскоговорящих клиентов в центральном офисе компании в Майами/Форт Лодердейл/Флорида/США.

## Контактная информация

---

Email: [andrey@shestakovyachtsales.com](mailto:andrey@shestakovyachtsales.com)

Web: [shestakovyachtsales.com](http://shestakovyachtsales.com)

## Телефоны

---

Краснодарский край: **+7(918)465-66-44**

США, Майами, Флорида: **+1(954)274-4435**

## Время работы

---

Понедельник – Суббота: **9:00 - 21:00**  
EDT

Воскресенье: **Закрито**

## Адрес

---



Harbour Towne Marina, 850 NE 3rd St,  
STE 213, Dania, FL 33004