

MADLI — SILVERTON



Builder: SILVERTON

Year Built: 2004

Model: Cruiser

Price: PRICE ON APPLICATION

Location: United States

LOA: 44' 1" (13.44m)

Beam: 14' 11" (4.55m)

Max Draft: 3' 7" (1.09m)

Our experienced yacht broker, Andrey Shestakov, will help you choose and buy a yacht that best suits your needs **Madli — SILVERTON** from our catalogue. Presently, at Shestakov Yacht Sales Inc., we have a wide variety of yachts available on our sale's list. We also work in close contact with all the big yacht manufacturers from all over the world.

If you would like to buy a yacht **Madli — SILVERTON** or would like help answering any questions concerning purchasing, selling or chartering a yacht, please call **+1(954)274-4435**

TABLE OF CONTENTS

TABLE OF CONTENTS	2
SPECIFICATIONS	5
Overview	5
Basic Information	5
Dimensions	5
Speed, Capacities and Weight	5
Accommodations	5
Hull and Deck Information	6
Engine Information	6
DETAILED INFORMATION	7
Layout and Accomodations	7
Recent Upgrades & Maintenance	8
Electronics	8
Electrical	9
Engine & Mechanical	9
Deck & Construction	9
Manufacturer Provided Description	10
Exclusions	10
Disclaimer	10
PHOTOS	11
Bridge	11
Salon	11
Master	11
Profile	11
Profile 2	11
Layout	11
Profile 3	12
Profile 4	12

Bow	12
Bridge Seating	12
Helm	12
Electronics	12
Electronics 2	13
Engine Ours	13
Bridge Stairs	13
Cockpit	13
Cockpit Sink	14
Cockpit 2	14
Side Decks	14
Washdowns	14
Running Sistership	15
Aerial 2	15
Salon 2	15
Salon 3	15
Salon Overhead	16
Salon Overhead Storage	16
Galley	16
Galley Fridge	16
Guest Stateroom	17
Galley Fridge & Freezer	17
Head	17
Shower	17
Master 2	18
Engine Room	18
Port Engine	18
Starboard Engine	18
Iso Transformer	18

Dripless Shaft Seals	18
CONTACTS	19
Contact details	19
Telephones	19
Office hours	19
Address	19

SPECIFICATIONS

Overview

"Madli" is a phenomenal example of the very popular Silverton 42 Convertible. This low hour boat (under 700 hrs.) is powered by reliable and efficient 450 Cummins and has seen many recent improvements from a caring owner. Her roomy bridge has a factory hardtop, easy access via stairs rather than a ladder and an enclosure that was just done in the past year. Bridge seats have also been reupholstered. The cockpit is spacious and is at home whether it be enjoying watersports with the family or doing some serious fishing. "Madli" has an extended sun shade for the cockpit as well as new cockpit carpet. With a Garmin 3010 Chartplotter, Garmin Radar, Autopilot, Electronic Controls and more she is ready for some serious cruising and family fun!

Basic Information

Category: Cruiser

Model Year: 2004

Year Built: 2004

Country: United States

Cockpit: Yes

Dimensions

LOA: 44' 1" (13.44m)

Beam: 14' 11" (4.55m)

Max Draft: 3' 7" (1.09m)

Clearance: 16' 8" (5.08m)

Speed, Capacities and Weight

Displacement: 26300 Pounds

Water Capacity: 200 Gallons

Holding Tank: 40 Gallons

Fuel Capacity: 524 Gallons

Accommodations

Total Cabins: 2

Hull and Deck Information

Hull Material: Fiberglass

Engine Information

Engines: 2

Manufacturer: Cummins

Model: 450 Diamond Series

Engine Type: Inboard

Fuel Type: Diesel

DETAILED INFORMATION

Layout and Accommodations

The 42 Silverton Convertible is one of the most versatile boats in this size range. With the ability to fish, cruise and entertain all equally well. Combined with timeless lines and good looks there is little question while this boat has so much appeal. A large two stateroom layout (both with double berths) and a head that features a separate shower compartment with private entrances from both staterooms is unique and very functional. The galley features abundant storage, counter space and a full compliment of appliances. The salon has a large dinette as well as a sofa and entertainment center. An abundance of natural light combined with rich wood cabinetry and new interior carpet on "Madli" make the interior fresh and inviting.

Outside the cockpit is large and ready for watersports with the kids or set up a table and chairs for sunset wine and cheese. An extended sun awning provides extra shade and the cockpit carpet is new. The cockpit has a sink and fresh and saltwater washdowns as well as an in deck fishbox with macerator. The transom has a full door that leads onto the swim platform. Steps lead to large sidedecks for easy bow access.

From the cockpit, molded fiberglass stairs lead easily up to the flybridge. The bridge features the protection of a full hardtop and the helm is set aft which provides for excellent visibility and dockside maneuvering. A captain and companion chair along with forward bench seating (all which have been recently reupholstered) provide room for a crowd and the canvas enclosure has just been totally redone in the past year.

- Freshwater System with ShuFlo Pump
- Attwood Hot Water Heater
- Dockside Water Hookup with Pressure Regulator
- Vacuflush Head
- Corian Vanity Top
- Jabsco Macerator and Holding Tank w/ Deck Pumpout
- Y-Valve
- Grey Water System with Rule 800 Pump
- Marine Air A/C with Digital Thermostat (2 units at 16,000 BTUs)
- Corian Countertops
- Nova Kool side by side refrigerator and freezer
- Sharp Microwave
- Two Burner Glass Cooktop
- Abundant Counter and Cabinet Space
- Wood flooring in Galley
- New Carpet throughout Interior
- Color TV in Salon
- Bose Interior Stereo System

Recent Upgrades & Maintenance

Plumbing - 2014

Toilet Head Gasket

Replaced all hoses & fittings

Installed new bigger holding tank

Bilge Pump replace Forward & Mid

Bridge Cushions replaced 2014

Shower Sump pump - 2013

Rudder boxes lubricated & O rings tightened - 2014

New air cleaners 2014

Rebuilt Battery Tray 2014

Caulking around rub rail & bridge replace 2015

New interior carpet & cockpit carpet 2013

New bridge canvas 2014

Cockpit Canvas overhang w/ cockpit cover - 2009

Front window canvas - 2011

Alternator Starboard 2013

All batteries 2013 - replaced Gen 2015

Macerator replaced 2012

Electronics

- Garmin 3010c Color Chartplotter/GPS/Display
- Garmin Radar
- Raymarine 215 VHF Radio
- Raymarine Autopilot
- Raymarine Tridata
- Ritchie Compass
- Sony CD AM/FM Stereo

- Trim Tabs
- Remote Control Searchlight
- ZF Electronic Controls
- Horn

Electrical

- Kohler 8kw Diesel Generator with Sound Shield (850 hrs.)
- 50amp Shorepower Service
- 50amp Shorepower Cord
- Glendinning Cablemaster
- AC and DC Electrical Systems
- Batteries
- ProMariner Battery Charging System
- 12volt Outlets
- AC and DC Breaker Panel
- Circuit Load Monitor
- Charles ISO Transformer
- AC Outlets with GFCI protection
- Bonding System

Engine & Mechanical

- ZF Electronic Controls
- Oil Exchange Pump
- Closed Freshwater Cooling System
- ZF Hydraulic Transmissions
- Dripless Shaft Seals
- Racor Fuel Filters
- Fuel Shut Off Valves
- Sea Star Hydraulic Steering
- Bronze Seacocks
- Groco Sea Strainers

Deck & Construction

- Plow Anchor
- Maxwell Windlass with Deck and Helm Controls
- Swim Platform
- Transom Door
- Swim Ladder

- Cockpit Freshwater Washdown
- Cockpit Saltwater Washdown
- Cockpit Carpeting (New)
- Cockpit Sun Shade
- In Deck Cockpit Storage/Fishbox
- Cockpit Sink
- Cockpit Icemaker (non-operational)
- Cockpit Rod Holders
- Cockpit Under Gunwhale Storage
- Cockpit Shower
- Transom Flag Staff Base
- Flybridge Rail Rocket Launchers/Rod Holders
- Spreader Lights
- Hardtop
- Windshield Canvas Cover
- Bow Rails
- Abundant Grab Rails
- Molded Stairway to Flybridge
- Bottom Painted (2015)

Manufacturer Provided Description

The Silverton 42 Convertible offers incredible accommodations with luxurious appointments. A wide hardtop-crowned flybridge provides plentiful seating and storage. The command helm provides good visibility and the controls are at the captain's fingertips. The unique molded steps are great for accessing the bridge - no more ladders to bump those knees. The split head and shower arrangement make cleaning up easy.

Exclusions

Owner's personal belongings.

Disclaimer

The Company offers the details of this vessel or yacht in good faith but cannot guarantee or warrant the accuracy of this information nor warrant the condition of the vessel. A buyer should instruct his representatives, agents, or his surveyors, to investigate such details as the buyer desires validated. This vessel or yacht is offered subject to prior sale, price change, or withdrawal without notice.

PHOTOS

Bridge



Salon



Master



Profile



Layout



Profile 2



Profile 3



Profile 4



Bow



Bridge Seating



Helm



Electronics



Electronics 2



Engine Ours



Bridge Stairs



Cockpit



Cockpit 2



Cockpit Sink



Washdowns



Side Decks



Running Sistership



Aerial 2



Salon 2



Salon 3



Salon Overhead



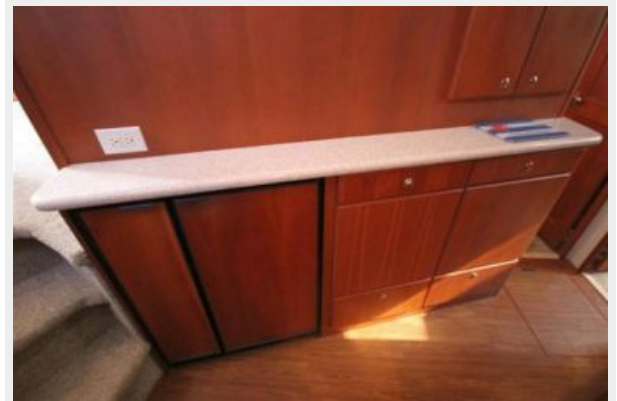
Salon Overhead Storage



Galley



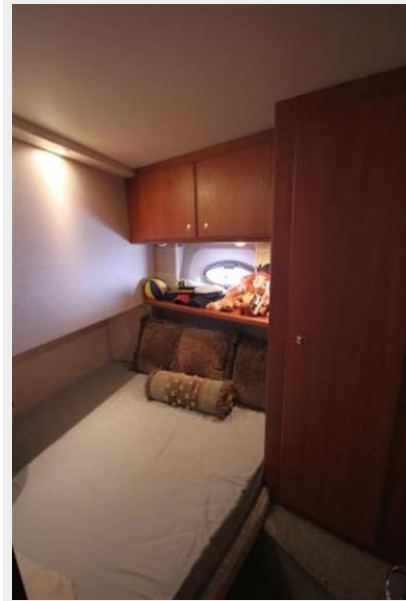
Galley Fridge



Galley Fridge & Freezer



Guest Stateroom



Head



Shower



Master 2



Engine Room



Port Engine



Starboard Engine



Iso Transformer



Dripless Shaft Seals



CONTACTS

Andrey Shestakov, leading yacht broker of the sales department of Shestakov Yacht Sales Inc. Shestakov Yacht Sales Inc., the official representative of the Miami/Fort Lauderdale FL headquarters.

Contact details

Email: andrey@shestakovyachtsales.com

Web: shestakovyachtsales.com/en/

Telephones

USA: +1(954)274-4435

Office hours

Monday – Saturday: **9:00 - 21:00** EDT

Sunday: **closed**

Address



Harbour Towne Marina, 850 NE 3rd St,
STE 213, Dania, FL 33004