

## MADLI — SILVERTON



**Судостроитель:** SILVERTON

**Год постройки:** 2004

**Модель:** Крейсер

**Цена:** ЦЕНА ЯХТЫ ПО ЗАПРОСУ

**Местонахождение:** United States

**Длина общая:** 44' 1" (13.44m)

**Ширина:** 14' 11" (4.55m)

**Макс. осадка:** 3' 7" (1.09m)

Купить **Madli — SILVERTON** а также выбрать подходящую вам яхту из нашего каталога яхт вам поможет опытный яхтенный брокер Андрей Шестаков. На сегодняшний день компания **Shestakov Yacht Sales Inc.** имеет большое количество яхт в собственном списке продаж, а также тесно сотрудничает со всеми крупными яхтенными производителями по всему миру.

Для того чтобы купить яхту **Madli — SILVERTON** а также проконсультироваться по любому вопросу связанному с покупкой, продажей, чартером яхт позвоните по телефону **+7(918)465-66-44**.

# ОГЛАВЛЕНИЕ

---

ОГЛАВЛЕНИЕ	2
ХАРАКТЕРИСТИКИ	5
Обзор	5
Основная информация	5
Размеры	5
Скорость, вместимость и масса	5
Размещение	5
Корпус и палуба	6
Информация о двигателе	6
ПОДРОБНОЕ ОПИСАНИЕ	7
Layout and Accomodations	7
Recent Upgrades & Maintenance	8
Electronics	8
Electrical	9
Engine & Mechanical	9
Deck & Construction	9
Manufacturer Provided Description	10
Исключения	10
Отказ от ответственности	10
ФОТОГРАФИИ	11
Bridge	11
Salon	11
Master	11
Profile	11
Profile 2	11
Layout	11
Profile 3	12
Profile 4	12

Bow	12
Bridge Seating	12
Helm	12
Electronics	12
Electronics 2	13
Engine Ours	13
Bridge Stairs	13
Cockpit	13
Cockpit Sink	14
Cockpit 2	14
Side Decks	14
Washdowns	14
Running Sistership	15
Aerial 2	15
Salon 2	15
Salon 3	15
Salon Overhead	16
Salon Overhead Storage	16
Galley	16
Galley Fridge	16
Guest Stateroom	17
Galley Fridge & Freezer	17
Head	17
Shower	17
Master 2	18
Engine Room	18
Port Engine	18
Starboard Engine	18
Iso Transformer	18

---

Dripless Shaft Seals	18
КОНТАКТЫ	19
Контактная информация	19
Телефоны	19
Время работы	19
Адрес	19

# ХАРАКТЕРИСТИКИ

## Обзор

"Madli" is a phenomenal example of the very popular Silverton 42 Convertible. This low hour boat (under 700 hrs.) is powered by reliable and efficient 450 Cummins and has seen many recent improvements from a caring owner. Her roomy bridge has a factory hardtop, easy access via stairs rather than a ladder and an enclosure that was just done in the past year. Bridge seats have also been reupholstered. The cockpit is spacious and is at home whether it be enjoying watersports with the family or doing some serious fishing. "Madli" has an extended sun shade for the cockpit as well as new cockpit carpet. With a Garmin 3010 Chartplotter, Garmin Radar, Autopilot, Electronic Controls and more she is ready for some serious cruising and family fun!

## Основная информация

Тип судна: Крейсер

Модельный год: 2004

Год постройки: 2004

Страна: United States

Кубрик: Да

## Размеры

Длина общая: 44' 1" (13.44m)

Ширина: 14' 11" (4.55m)

Макс. осадка: 3' 7" (1.09m)

Трапы: 16' 8" (5.08m)

## Скорость, вместимость и масса

Водоизмещение: 26300 Pounds

Вместимость воды: 200 Gallons

Вместимость сточного бака: 40 Gallons

Объем топливного бака: 524 Gallons

## Размещение

Всего кают: 2

## Корпус и палуба

---

**Материал корпуса:** Fiberglass

## Информация о двигателе

---

**Двигатели:** 2

**Производитель:** Cummins

**Модель:** 450 Diamond Series

**Тип двигателя:** Inboard

**Тип топлива:** Diesel

# ПОДРОБНОЕ ОПИСАНИЕ

## Layout and Accomodations

The 42 Silverton Convertible is one of the most versatile boats in this size range. With the ability to fish, cruise and entertain all equally well. Combined with timeless lines and good looks there is little question while this boat has so much appeal. A large two stateroom layout (both with double berths) and a head that features a separate shower compartment with private entrances from both staterooms is unique and very functional. The galley features abundant storage, counter space and a full compliment of appliances. The salon has a large dinette as well as a sofa and entertainment center. An abundance of natural light combined with rich wood cabinetry and new interior carpet on "Madli" make the interior fresh and inviting.

Outside the cockpit is large and ready for watersports with the kids or set up a table and chairs for sunset wine and cheese. An extended sun awning provides extra shade and the cockpit carpet is new. The cockpit has a sink and fresh and saltwater washdowns as well as an in deck fishbox with macerator. The transom has a full door that leads onto the swim platform. Steps lead to large sidedecks for easy bow access.

From the cockpit, molded fiberglass stairs lead easily up to the flybridge. The bridge features the protection of a full hardtop and the helm is set aft which provides for excellent visibility and dockside maneuvering. A captain and companion chair along with forward bench seating (all which have been recently reupholstered) provide room for a crowd and the canvas enclosure has just been totally redone in the past year.

- Freshwater System with ShuFlo Pump
- Attwood Hot Water Heater
- Dockside Water Hookup with Pressure Regulator
- Vacuflush Head
- Corian Vanity Top
- Jabsco Macerator and Holding Tank w/ Deck Pumpout
- Y-Valve
- Grey Water System with Rule 800 Pump
- Marine Air A/C with Digital Thermostat (2 units at 16,000 BTUs)
- Corian Countertops
- Nova Kool side by side refrigerator and freezer
- Sharp Microwave
- Two Burner Glass Cooktop
- Abundant Counter and Cabinet Space
- Wood flooring in Galley
- New Carpet throughout Interior
- Color TV in Salon
- Bose Interior Stereo System

---

## Recent Upgrades & Maintenance

---

### Plumbing - 2014

Toilet Head Gasket

Replaced all hoses & fittings

Installed new bigger holding tank

Bilge Pump replace Forward & Mid

Bridge Cushions replaced 2014

Shower Sump pump - 2013

Rudder boxes lubricated & O rings tightened - 2014

New air cleaners 2014

Rebuilt Battery Tray 2014

Caulking around rub rail & bridge replace 2015

New interior carpet & cockpit carpet 2013

New bridge canvas 2014

Cockpit Canvas overhang w/ cockpit cover - 2009

Front window canvas - 2011

Alternator Starboard 2013

All batteries 2013 - replaced Gen 2015

Macerator replaced 2012

---

## Electronics

---

- Garmin 3010c Color Chartplotter/GPS/Display
- Garmin Radar
- Raymarine 215 VHF Radio
- Raymarine Autopilot
- Raymarine Tridata
- Ritchie Compass
- Sony CD AM/FM Stereo



- Trim Tabs
- Remote Control Searchlight
- ZF Electronic Controls
- Horn

---

## Electrical

---

- Kohler 8kw Diesel Generator with Sound Shield (850 hrs.)
- 50amp Shorepower Service
- 50amp Shorepower Cord
- Glendinning Cablemaster
- AC and DC Electrical Systems
- Batteries
- ProMariner Battery Charging System
- 12volt Outlets
- AC and DC Breaker Panel
- Circuit Load Monitor
- Charles ISO Transformer
- AC Outlets with GFCI protection
- Bonding System

---

## Engine & Mechanical

---

- ZF Electronic Controls
- Oil Exchange Pump
- Closed Freshwater Cooling System
- ZF Hydraulic Transmissions
- Dripless Shaft Seals
- Racor Fuel Filters
- Fuel Shut Off Valves
- Sea Star Hydraulic Steering
- Bronze Seacocks
- Groco Sea Strainers

---

## Deck & Construction

---

- Plow Anchor
- Maxwell Windlass with Deck and Helm Controls
- Swim Platform
- Transom Door
- Swim Ladder

- Cockpit Freshwater Washdown
- Cockpit Saltwater Washdown
- Cockpit Carpeting (New)
- Cockpit Sun Shade
- In Deck Cockpit Storage/Fishbox
- Cockpit Sink
- Cockpit Icemaker (non-operational)
- Cockpit Rod Holders
- Cockpit Under Gunwhale Storage
- Cockpit Shower
- Transom Flag Staff Base
- Flybridge Rail Rocket Launchers/Rod Holders
- Spreader Lights
- Hardtop
- Windshield Canvas Cover
- Bow Rails
- Abundant Grab Rails
- Molded Stairway to Flybridge
- Bottom Painted (2015)

---

## Manufacturer Provided Description

---

The Silverton 42 Convertible offers incredible accommodations with luxurious appointments. A wide hardtop-crowned flybridge provides plentiful seating and storage. The command helm provides good visibility and the controls are at the captain's fingertips. The unique molded steps are great for accessing the bridge - no more ladders to bump those knees. The split head and shower arrangement make cleaning up easy.

---

## Исключения

---

При продаже яхты исключаются личные вещи владельца.

---

## Отказ от ответственности

---

Компания предоставляет описание судна или яхты добросовестно, но не может гарантировать точность этой информации, а также не ручается за техническое состояние. Покупатель должен проинструктировать своих агентов или оценщиков исследовать представленную информацию более подробно, по собственному желанию. Продажа судна или яхты, изменение цены или снятие с продажи будет происходить без предварительного уведомления.

# ФОТОГРАФИИ

**Bridge**



**Salon**



**Master**



**Profile**



**Layout**



**Profile 2**



**Profile 3**



**Profile 4**



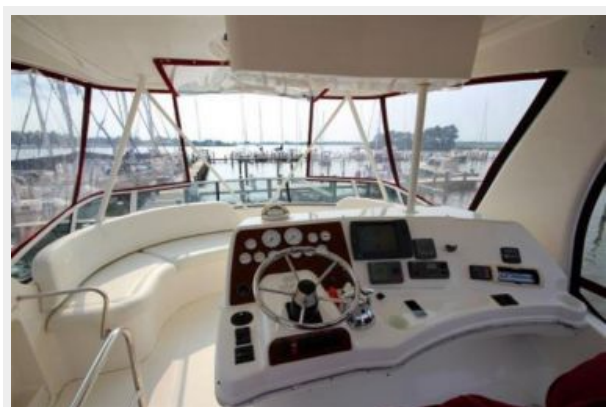
**Bow**



**Bridge Seating**



**Helm**



**Electronics**



### Electronics 2



### Engine Ours



### Bridge Stairs



### Cockpit





**Cockpit 2**



**Cockpit Sink**



**Washdowns**



**Side Decks**



## Running Sistership



## Aerial 2



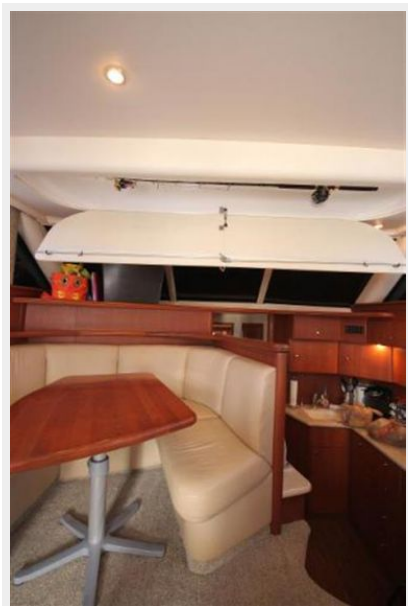
## Salon 2



## Salon 3



**Salon Overhead**



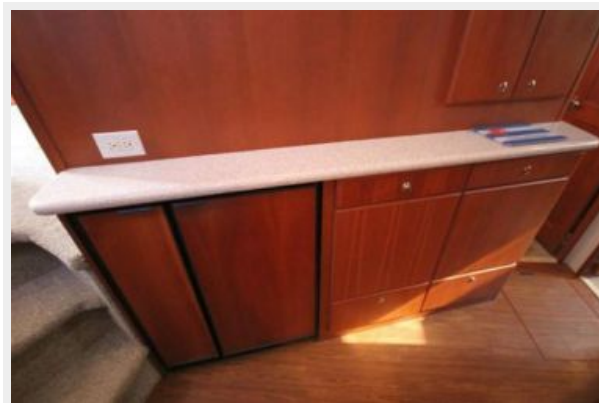
**Salon Overhead Storage**



**Galley**



**Galley Fridge**

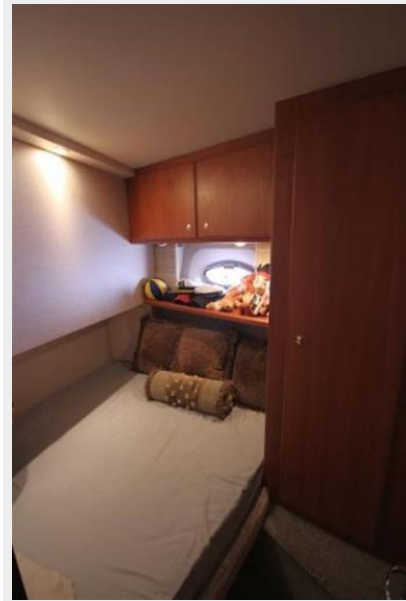




**Galley Fridge & Freezer**



**Guest Stateroom**



**Head**



**Shower**



**Master 2**



**Engine Room**



**Port Engine**



**Starboard Engine**



**Iso Transformer**



**Dripless Shaft Seals**



# КОНТАКТЫ

---

Андрей Шестаков (Andrey Shestakov) – ведущий яхтенный брокер отдела продаж яхт и судов компании Shestakov Yacht Sales Inc. Официальный представитель Shestakov Yacht Sales Inc. для русскоговорящих клиентов в центральном офисе компании в Майами/Форт Лодердейл/Флорида/США.

## Контактная информация

---

Email: [andrey@shestakovyachtsales.com](mailto:andrey@shestakovyachtsales.com)

Web: [shestakovyachtsales.com](http://shestakovyachtsales.com)

## Телефоны

---

Краснодарский край: **+7(918)465-66-44**

США, Майами, Флорида: **+1(954)274-4435**

## Время работы

---

Понедельник – Суббота: **9:00 - 21:00**  
EDT

Воскресенье: **Закрето**

## Адрес

---



Harbour Towne Marina, 850 NE 3rd St,  
STE 213, Dania, FL 33004