

ALDILA — AZIMUT / BENETTI



Судостроитель: AZIMUT / BENETTI

Год постройки: 2009

Модель: Моторная яхта

Цена: ЦЕНА ЯХТЫ ПО ЗАПРОСУ

Местонахождение: United States

Длина общая: 63' 1" (19.23m)

Ширина: 16' 7" (5.05m)

Макс. осадка: 5' 1" (1.55m)

Крейс. скорость: 20 Kts. (23 MPH)

Макс. скорость: 26 Kts. (30 MPH)

Купить **ALDILA — AZIMUT / BENETTI** а также выбрать подходящую вам яхту из нашего каталога яхт вам поможет опытный яхтенный брокер Андрей Шестаков. На сегодняшний день компания **Shestakov Yacht Sales Inc.** имеет большое количество яхт в собственном списке продаж, а также тесно сотрудничает со всеми крупными яхтенными производителями по всему миру.

Для того чтобы купить яхту **ALDILA — AZIMUT / BENETTI** а также проконсультироваться по любому вопросу связанному с покупкой, продажей, чартером яхт позвоните по телефону **+7(918)465-66-44**.

ОГЛАВЛЕНИЕ

| | |
|-------------------------------|----|
| ОГЛАВЛЕНИЕ | 2 |
| ХАРАКТЕРИСТИКИ | 4 |
| Основная информация | 4 |
| Размеры | 4 |
| Скорость, вместимость и масса | 4 |
| Размещение | 4 |
| Корпус и палуба | 5 |
| Информация о двигателе | 5 |
| ПОДРОБНОЕ ОПИСАНИЕ | 6 |
| Introduction | 6 |
| July 2015 Engine Work | 6 |
| Accommodations | 6 |
| Salon | 6 |
| Galley | 7 |
| Main Deck | 7 |
| Fly Bridge | 7 |
| Helm | 7 |
| Aft Deck | 8 |
| Engine Room | 8 |
| Crew Quarters | 8 |
| Исключения | 8 |
| Отказ от ответственности | 8 |
| ФОТОГРАФИИ | 9 |
| КОНТАКТЫ | 18 |
| Контактная информация | 18 |
| Телефоны | 18 |
| Время работы | 18 |
| Адрес | 18 |

ХАРАКТЕРИСТИКИ

Основная информация

| | |
|--|---------------------------------|
| Тип судна: Моторная яхта | Подкатегория: Semi-Displacement |
| Модельный год: 2009 | Год постройки: 2009 |
| Страна: United States | Регистрационный номер: 1215174 |
| Номер регистрации в береговой охране: Wilmington, DE | Верх: Radar Arch and Bimini |

Размеры

| | |
|------------------------------|------------------------|
| Длина общая: 63' 1" (19.23m) | Ширина: 16' 7" (5.05m) |
| Макс. осадка: 5' 1" (1.55m) | |

Скорость, вместимость и масса

| | |
|---------------------------------------|------------------------------------|
| Крейс. скорость: 20 Kts. (23 MPH) | Макс. скорость: 26 Kts. (30 MPH) |
| Чистый вес: 56 Pounds | Вместимость воды: 264 Gallons |
| Вместимость сточного бака: 92 Gallons | Объем топливного бака: 988 Gallons |

Размещение

| | |
|--------------------------|-------------------------|
| Всего кают: 3 | Всего коек: 4 |
| Спальные места: 6 | Всего ком. состава: 3 |
| Каюты экипажа: 1 | Койки экипажа: 2 |
| Спальных мест экипажа: 2 | Комм. состав экипажа: 1 |

Корпус и палуба

Материал корпуса: Fiberglass

Материал палубы: Teak and Fiberglass

Комплектация корпуса: Deep Vee

Цвет корпуса: White

Отделка корпуса: Stainless Steel

Дизайнер корпуса: Stefano Reghini

Информация о двигателе

Двигатели: 2

Производитель: Caterpillar

Модель: C18

Тип двигателя: Inboard

Тип топлива: Diesel

ПОДРОБНОЕ ОПИСАНИЕ

Introduction

ALDILA is a lightly used Azimut 62E. There are few similar yachts that can offer the family adventures and lifestyle available with the Azimut 62E. Built to US spec with Cat engines makes this yacht desirable. The spaces and amenities found on ALDILA will satisfy even the most demanding. **Brand new generator with warranty Engines serviced Aug 2015 Fully waxed and detailed Aug 2015 Engine room fully detailed Aug 2015 Brand new Bimini top 1000 hour service performed with two brand-new intercoolers** The Owner wants to move on immediately and wants ADILA to be the next sport yacht sold.

July 2015 Engine Work

- 2 new intercoolers
- All heat exchangers and coolers removed and ultra sonically cleaned
- All fluids replaced
- 1000hr service completed by Certified Diesel and all recommendations performed.

Accommodations

This 2009 Azimut has three spacious cabins onboard. All heads come equipped with Tecma marine toilets and display panels. The forward VIP cabin is a very spacious cabin. It comes with a queen size mattress, its own walk in closet, large shower and head, and plenty of storage throughout the cabin. This cabin has two large windows, which allow plenty of light in. There is a Bomar deck hatch centrally located over the bed. The forward VIP also comes with its own 19" Sharp flat panel TV w/ built in DVD capabilities and a Sony MEX-BT2600 marine stereo unit, which isolates music and TV sound to this particular room. Starboard twin cabin- comes standard with two twin beds with a walkway centered between them. This cabin also comes with a large closet and cabinetry for all your clothes storage needs. This cabin also comes standard with your own 19" Sharp television w/ built in DVD capabilities and a Sony MEX-BT2600 marine head unit. There is a full size GE stacking washer/dryer combo in the hallway connecting the staterooms. It is hidden behind wood cabinetry. There is also a head located in this hallway on the port side. This head comes with a full shower as well. The full beam master stateroom on this motor yacht is very spacious with two large hull windows on either side allowing this stateroom to feel bright and welcoming. This stateroom also comes with its own walk in closet, and large head big enough for two. On the starboard side, there is a beautiful wood desk/ vanity with ample storage throughout. This stateroom also comes with a 26" Sharp flat panel television with a DVD player and the Sony MEX-BT2600 stereo unit.

Salon

The salon has a beautiful U-shaped couch with a round coffee table centered for entertaining. Salon entertainment comes with a Bose 9-speaker surround sound system. And a 32" Sharp television on an electronic lift. The salon also has blinds, which can transform the salon into a movie theater-like room. There are security cameras throughout, two in the salon.

Galley

The galley is set aft of the main helm on the port side. There are two stainless steel sinks in the galley. The galley has a full size Coolmatic refrigerator-freezer combo. This motor yacht comes with a Schott Ceran 4-burner stovetop and it also has a General Electric full size microwave. Forward of the refrigerator lies a Raritan icemaker and storage located behind wood cabinetry. Opposite the galley is another U-shaped dinette which comes equipped with dual tables with a walkway in the center allowing guests to get in and out of their seat with ease. There is also a table insert available to make the dinette table a full size dining room table.

Main Deck

The bow of this motor yacht is equipped with a large sun pad area (actual sun pad cushion is missing) There are teak decks throughout from the swim platform to the windlass on the bow. The windlass is a LoFrans leopard unit with chain rode. Windlass comes with foot controls on deck as well as controls to raise/lower at both helms.

Fly Bridge

The flybridge on this particular Azimut features a large sitting area on the starboard side with large fiberglass table and cup holders for your entertaining needs. There is another helm station located on the port side. A stainless steel sink and a stainless steel Alpes-Inox electric grill are located directly aft of the helm seat. A canvas bimini top and fiberglass arch covers this entire area. There are Bose and Clarion speakers throughout the flybridge. Behind the entertaining area lies a Opacmare davit. Located behind the davit is a 12' Caribe RIB tender with a 30hp Nissan outboard motor.

Helm

This Azimut comes standard with two helms. One forward of the galley and dinette, the other helm is located on the flybridge. There are two powered windows on either side to allow communication while docking. The main helm has a leather covered power captain's chair and is equipped with 2-Raymarine E120 gps plotters, raymarine ST6002 Autopilot, and Raymarine ST60+ depth finder. This vessel also comes equipped with a FLIR camera on the brow, which can be viewed through the Raymarine E120 display, and a Jabsco ITT searchlight with control functions at both helms. This vessel also comes with SidePower bow and stern thrusters.

Ray240E fixed mount VHF radio at both helms.

Aft Deck

The aft deck has a large semicircle seat with an adjustable wood table. Stairs to the flybridge are located on the port side. There is a Fusion stereo control unit mounted on the starboard side directly above the battery selector panel. Access to the swim platform is through a door on the starboard side. The swim platform area comes equipped with a fresh water shower head and an Opacmare passerelle. There is also a stainless steel swim ladder.

Engine Room

- Caterpillar C18 engines power this Azimut. Port: 998.9 hours Starboard: 1001.9 hours.
- Generator is a Kohler 20kw with less than 10 hours.
- Outboard of the powerful caterpillar engines are the two main fuel tanks.
- Diesel capacity totals approximately 988 Gallons of diesel.
- Holding tank capacity: 92 Gallons
- Fresh water capacity: 265 Gallons
- Engine room contains a Sea-Fire FM-200 automatic extinguishing system

Crew Quarters

There are two twin size bunks in the crew quarters. On the port side lays a head equipped with a Tecma marine toilet, showerhead and sink.

Исключения

При продаже яхты исключаются личные вещи владельца.

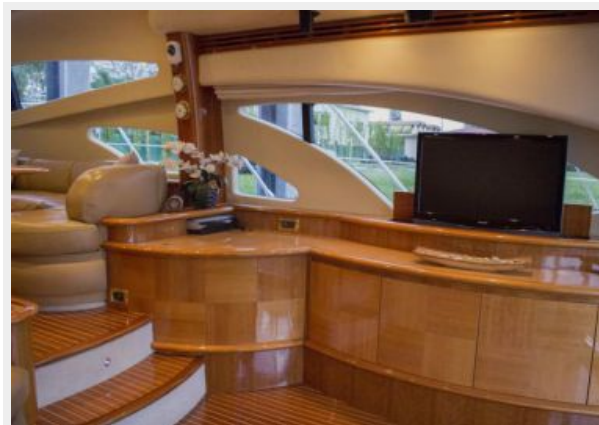
Отказ от ответственности

Компания предоставляет описание судна или яхты добросовестно, но не может гарантировать точность этой информации, а также не ручается за техническое состояние. Покупатель должен проинструктировать своих агентов или оценщиков исследовать представленную информацию более подробно, по собственному желанию. Продажа судна или яхты, изменение цены или снятие с продажи будет происходить без предварительного уведомления.

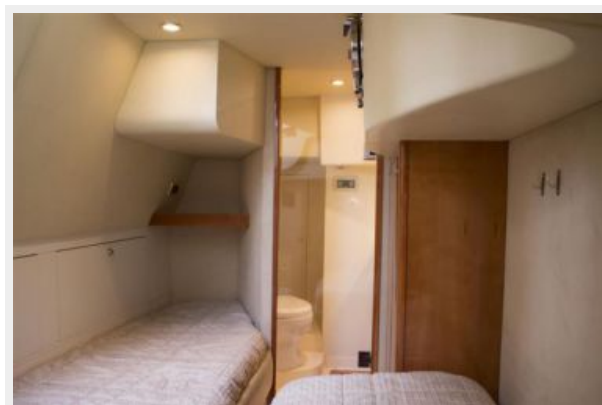
ФОТОГРАФИИ



















КОНТАКТЫ

Андрей Шестаков (Andrey Shestakov) – ведущий яхтенный брокер отдела продаж яхт и судов компании Shestakov Yacht Sales Inc. Официальный представитель Shestakov Yacht Sales Inc. для русскоговорящих клиентов в центральном офисе компании в Майами/Форт Лодердейл/Флорида/США.

Контактная информация

Email: andrey@shestakovyachtsales.com

Web: shestakovyachtsales.com

Телефоны

Краснодарский край: **+7(918)465-66-44**

США, Майами, Флорида: **+1(954)274-4435**

Время работы

Понедельник – Суббота: **9:00 - 21:00**
EDT

Воскресенье: **Закрето**

Адрес



Harbour Towne Marina, 850 NE 3rd St,
STE 213, Dania, FL 33004