

## FISHWATER — VIKING



**Builder:** VIKING

**Year Built:** 2000

**Model:** Sport Fisherman

**Price:** PRICE ON APPLICATION

**Location:** United States

**LOA:** 47' 2" (14.38m)

**Beam:** 15' 6" (4.72m)

**Max Draft:** 4' 5" (1.35m)

**Cruise Speed:** 30 Kts. (35 MPH)

**Max Speed:** 33 Kts. (38 MPH)

Our experienced yacht broker, Andrey Shestakov, will help you choose and buy a yacht that best suits your needs **Fishwater — VIKING** from our catalogue. Presently, at Shestakov Yacht Sales Inc., we have a wide variety of yachts available on our sale's list. We also work in close contact with all the big yacht manufacturers from all over the world.

If you would like to buy a yacht **Fishwater — VIKING** or would like help answering any questions concerning purchasing, selling or chartering a yacht, please call **+1(954)274-4435**

---

# TABLE OF CONTENTS

---

TABLE OF CONTENTS	2
SPECIFICATIONS	4
Overview	4
Basic Information	4
Dimensions	4
Speed, Capacities and Weight	5
Accommodations	5
Hull and Deck Information	5
Engine Information	5
DETAILED INFORMATION	6
Vessel Walkthrough	6
Notes	6
Galley/Laundry	6
Fishing Equipment	7
Engineer Room	7
Electrical Equipment	8
Fly Bridge and Deck	9
Electronics Package	9
Notable Upgrades	10
Exclusions	11
Disclaimer	11
PHOTOS	12
Starboard Profile	12
CONTACTS	16
Contact details	16
Telephones	16
Office hours	16
Address	16



---

# SPECIFICATIONS

---

## Overview

---

Brand new to the market, "Fishwater" is an excellent example of the popular Viking 47' Convertible. She has been a well-known serious fishing contender in Virginia Beach for her entire life. She has been professionally maintained by Bluewater Yacht Sales (we are the dealer and sold her new), ACE Marine (MAN dealer with an office at our yard), and has always had a professional crew to keep her in top condition. She is powered with the MAN 800hp engines, and has a full tower which was added in 2003. Also in 2003, a custom helm pod and upgraded electronics package were added, as well as all new soft goods and countertops. The boat was completely painted from the waterline up in 2007, and the hullsides are an "ice blue". This boat is a real head-turner wherever she goes. The love and care that she has received is immediately evident from dockside as well as aboard. This is one of those special boats that has always been kept "right". The list of upgrades (see full specs) is extensive! No expense has been spared. She is beautiful to the eye, performs like no other 47' production boat, and has proven herself a fish-raiser. She must be seen by anyone looking for a quality sportfishing machine which lacks for nothing in the lower \$300K range.

## Basic Information

---

**Category:** Sport Fisherman

**Sub Category:** Sport Fisherman

**Model Year:** 2000

**Year Built:** 2000

**Country:** United States

## Dimensions

---

**LOA:** 47' 2" (14.38m)

**Beam:** 15' 6" (4.72m)

**Max Draft:** 4' 5" (1.35m)

---

## Speed, Capacities and Weight

---

**Cruise Speed:** 30 Kts. (35 MPH)

**Max Speed:** 33 Kts. (38 MPH)

**Displacement:** 46300 Pounds

**Water Capacity:** 160 Gallons

**Fuel Capacity:** 700 Gallons

---

## Accommodations

---

**Total Cabins:** 2

**Total Heads:** 2

---

## Hull and Deck Information

---

**Hull Material:** Fiberglass

---

## Engine Information

---

**Engines:** 2

**Manufacturer:** MAN

**Model:** 2848

**Engine Type:** Inboard

**Fuel Type:** Diesel

---

# DETAILED INFORMATION

---

## Vessel Walkthrough

---

"Fishwater" has the popular two-stateroom, two-head layout with galley up. The salon and galley are quite large and spacious, and all soft goods and carpeting are fresh and in very good condition. The galley is forward to port, opposite a beautiful teak dinette (custom sailfish inlay) and updated entertainment center with a Sony 46" flat-screen TV, KVH satellite TV system with two receivers, and a Sony stereo system. Aft to port is a large and comfortable L-shaped settee with storage beneath. Three steps down from the salon is the washer/dryer to port, and the guest stateroom is to starboard. The guest stateroom features wide over and under berths, large cedar-lined closet, drawer storage, and a private entrance into the day head. The day/guest head offers a full stall shower, vanity with storage, sink, and fresh-water Vacu-Flush head. The master stateroom is forward and features a centerline queen berth, cedar-lined hanging locker, drawer storage, custom rod storage, overhead hatch, JVC 13" TV with DVD player, and private ensuite head. The master head includes a large stall shower, vanity with storage, and fresh-water Vacu-Flush head system. All of the berths include a custom upgraded orthopedic mattress as well!

## Notes

---

New bedspreads and shams in 2003

New salon carpeting in 2009

Two carpet runners for salon

Two SAT TV receivers (one for each TV)

Ultraleather settee and dinette in excellent condition

## Galley/Laundry

---

Large galley located in the salon- forward to port.

Beautiful teak cabinetry

Corian countertops (new in 2003)

Antico teak and holly sole

Full-size upright Kenmore refrigerator and freezer

Ceran 2-burner electric stove

Sharp convection microwave over (new 2003)

Washer/dryer located in companionway

Dockside fresh water hook-up

---

## Fishing Equipment

---

Bluewater tower (2003) with single-lever controls and electronics at tower station

Release Marine fighting chair with rocket launchers

4 clearing rodholders in flyridge haunch

Rupp outriggers (2003)

Large in-deck macerated fishbox with dividers

Eskimo ice maker (plumbed to fishbox)

Recessed electric teaser reels (2003)

3 built-in quartz lights

Bait freezer (new 2006)

Flush-mounted rod holders

Flybridge rocket launchers

Transom door

Raw and fresh water washdowns

Fresh water washdown on flybridge

Tackle storage and rigging station

Trolling valves

---

## Engineer Room

---

Preferred MAN 2848 800hp engines with upgraded turbos, recent injectors and valves,

Sea strainers

Trolling valves

Fuel priming pumps

Delta-T airboxes (2006)

Y-valve "crash pumps" at raw water intakes

Macerated holding tank

ZF 350 transmissions (2.077:1)

Glendinning engine synchronizers

Glendinning single-lever controls

Hynautic hydraulic steering system

Oil changing system

Engine room fire suppression system

Three (3) bilge pumps

Emergency engine stop

Racor fuel filters

Blowers

Dripless shaft seals

Engine temperature alarm

Bennett dual-ram trim tabs

Raritan 20-gallon water heater

Cruise-air air conditioning system with revers-cycle heat and digital controls

Awlgripped bilges

---

## **Electrical Equipment**

---

Onan 15KW diesel generator with soundshield

3 battery banks

Isolation transformer

Glendinning cable master



---

50amp/120/240 volt electrical system

Dual pole breaker for AC at main distribution panel

Sentry SM series 24 volt battery charger

Charles Marine 60 12 volt battery charger

Battery parallel switch at helm

## Fly Bridge and Deck

---

2 Release Marine helm chairs

Fresh water washdown on bridge

Navigation lights

3-sided Strataglass enclosure with EZ2CY center panel

Custom helm station pod

Electric teaser reels

Overhead lights

Courtesy lights

Bench-style seating (2) with storage beneath

Fusion stereo w/speakers

Lewmar windlass with danforth anchor

Bow pulpit

Custom low-profile bow rail

Wide side-decks for easy bow access

Flybridge brow storage compartment

## Electronics Package

---

FLYBRIDGE:

Northstar 957 chart plotter

Garmin GPS Map 740S chart plotter

Furuno FCV-292 bottom machine

Furuno 1942 60 mile radar

Furuno RD-30 speed/temp/depth

Robertson Simrad AP-22 autopilot

ICOM VHF (2 at flybridge, 1 in salon, and 1 on tower)

Rudder angle indicator

ACR spotlight

6" Ritchie compass

TOWER:

Furuno RD-30 speed/temp/depth

ICOM VHF

4" Ritchie compass

---

## Notable Upgrades

---

This yacht has constantly been upgraded and maintained, including:

46" Sony flat screen TV

100 watt cockpit speakers

AC water pump replaced

Radar screen replaced

Bilge pumps replaced

Vacu-flush motor replaced

Engine cooling system overhauled

Icemaker compressor replaced

Countertops and soft good replaced

Injectors and valves

Drink box in cockpit

Two (2) Direct TV receivers

---

## **Exclusions**

Owner's personal belongings.

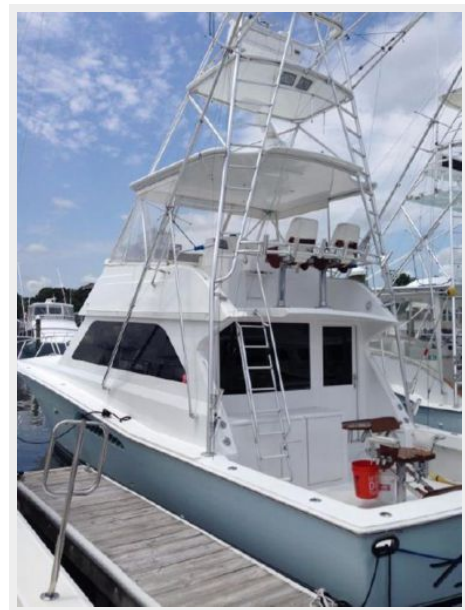
---

## **Disclaimer**

The Company offers the details of this vessel or yacht in good faith but cannot guarantee or warrant the accuracy of this information nor warrant the condition of the vessel. A buyer should instruct his representatives, agents, or his surveyors, to investigate such details as the buyer desires validated. This vessel or yacht is offered subject to prior sale, price change, or withdrawal without notice.

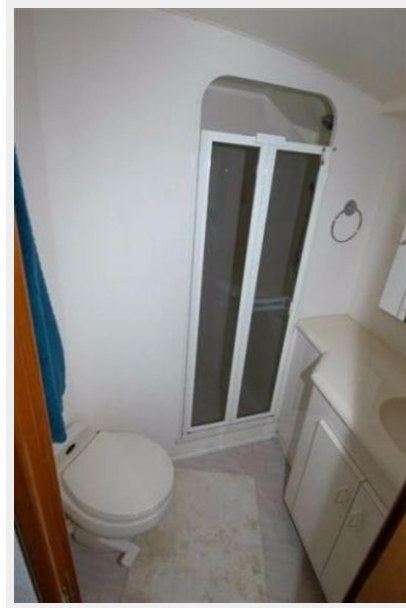
# PHOTOS

Starboard Profile











# CONTACTS

---

Andrey Shestakov, leading yacht broker of the sales department of Shestakov Yacht Sales Inc. Shestakov Yacht Sales Inc., the official representative of the Miami/Fort Lauderdale FL headquarters.

## Contact details

---

Email: [andrey@shestakovyachtsales.com](mailto:andrey@shestakovyachtsales.com)

Web: [shestakovyachtsales.com/en/](http://shestakovyachtsales.com/en/)

## Telephones

---

USA: +1(954)274-4435

## Office hours

---

Monday – Saturday: **9:00 - 21:00** EDT

Sunday: **closed**

## Address

---



Harbour Towne Marina, 850 NE 3rd St,  
STE 213, Dania, FL 33004